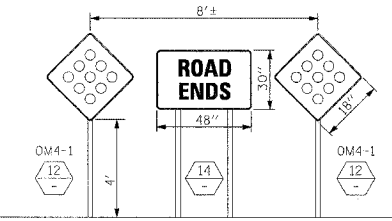


F.A.P. RTE.	SECTION	COUNTY	TOTAL SHEETS	SHEET NO.
315	55-2	McDONOUGH	1025	418
STA. 46+00		TO STA. 70+00		
FED. ROAD DIST. NO. 4 ILLINOIS FED. AID PROJECT				

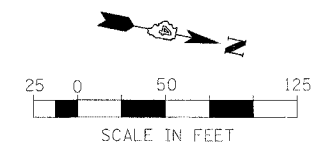
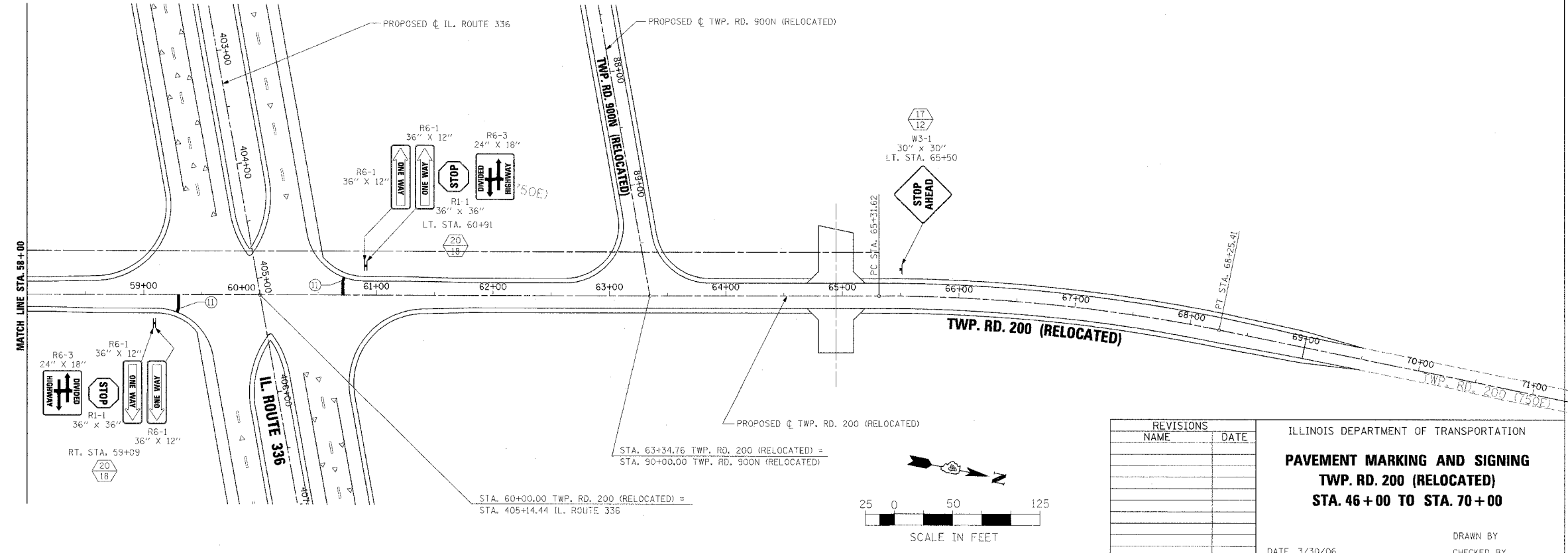
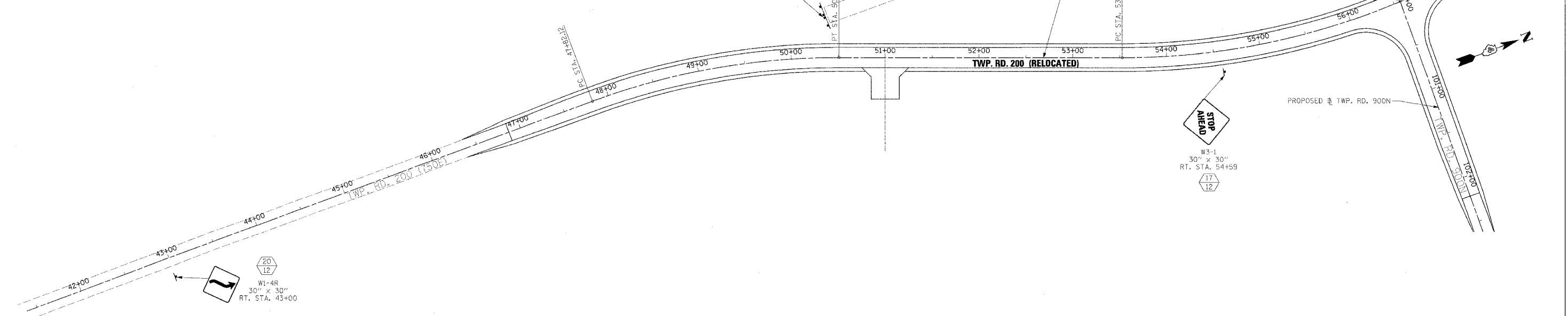
- ### PAVEMENT MARKING LEGEND
- ① EPOXY PAVEMENT MARKING - LETTERS AND SYMBOLS
 - ② EPOXY PAVEMENT MARKING - LINE 4" WHITE SOLID
 - ③ EPOXY PAVEMENT MARKING - LINE 4" YELLOW SOLID
 - ④ EPOXY PAVEMENT MARKING - LINE 4" YELLOW SOLID (DOUBLE LINE)
 - ⑤ EPOXY PAVEMENT MARKING - LINE 4" YELLOW SKIP DASH
 - ⑥ PREFORMED PLASTIC PAVEMENT MARKING - LINE 6" WHITE SKIP DASH
 - ⑦ EPOXY PAVEMENT MARKING - LINE 8" WHITE SOLID
 - ⑧ EPOXY PAVEMENT MARKING - LINE 8" WHITE SKIP DASH
 - ⑨ EPOXY PAVEMENT MARKING - LINE 12" WHITE SOLID
 - ⑩ EPOXY PAVEMENT MARKING - LINE 12" YELLOW SOLID
 - ⑪ EPOXY PAVEMENT MARKING - LINE 24" WHITE SOLID (STOP BAR)

- ### RAISED REFLECTIVE PAVEMENT MARKERS (RRPM) LEGEND
- ① ▲ ONE-WAY CRYSTAL MARKER AT 80' CENTERS
 - ② ▲ ONE-WAY CRYSTAL MARKER AT 40' CENTERS
 - ③ ▲ ONE-WAY CRYSTAL MARKER AT 20' CENTERS
 - ④ ▲ ONE-WAY AMBER MARKER AT 40' CENTERS
 - ⑤ ▲ ONE-WAY AMBER MARKER AT 20' CENTERS
 - ⑥ ◆ TWO-WAY AMBER MARKER AT 40' CENTERS

- ### SIGN POST LEGEND
- ⊕ WOOD POST LENGTH
 - ⊖ OFFSET FROM EDGE OF PAVEMENT



1. PAVEMENT MARKINGS SHALL BE IN ACCORDANCE WITH DISTRICT CADD DETAILS - STANDARD '80001.



REVISIONS	
NAME	DATE

ILLINOIS DEPARTMENT OF TRANSPORTATION
PAVEMENT MARKING AND SIGNING
TWP. RD. 200 (RELOCATED)
STA. 46+00 TO STA. 70+00
DATE 3/30/06
DRAWN BY
CHECKED BY