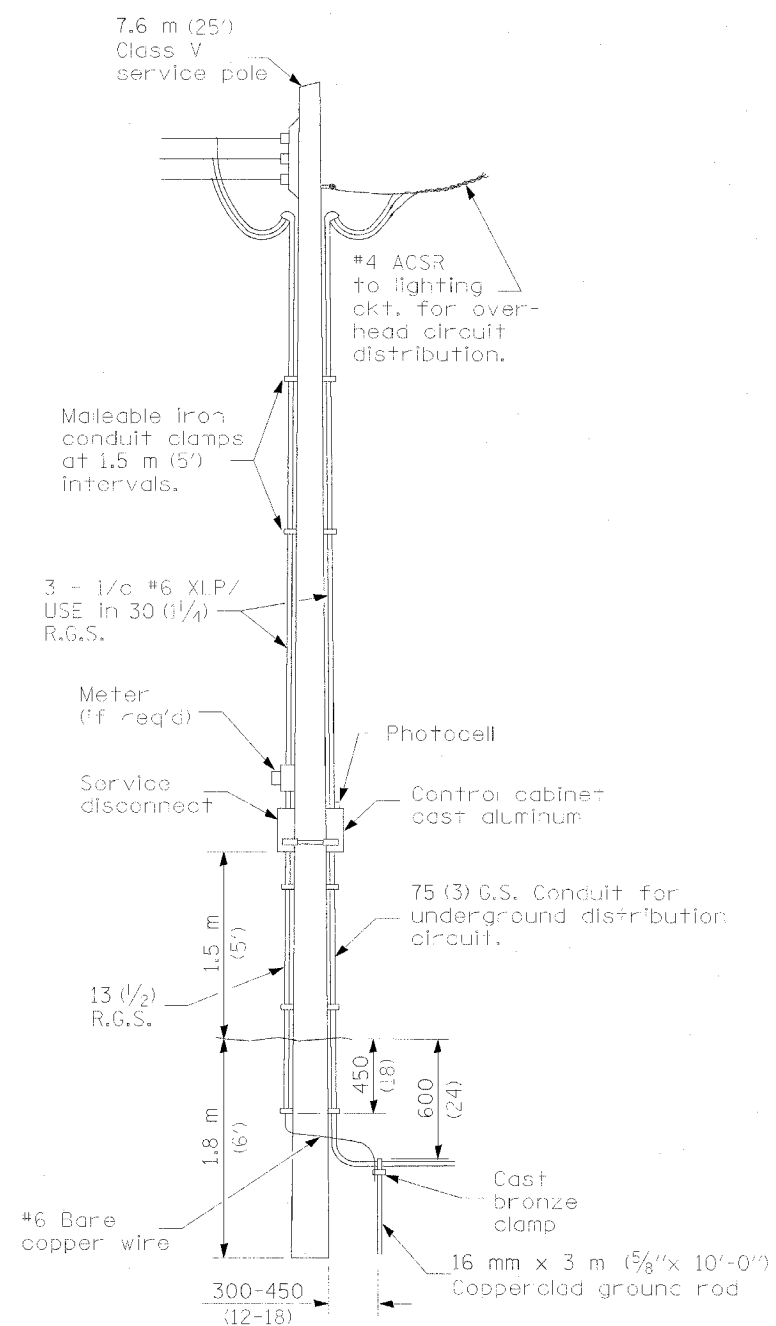
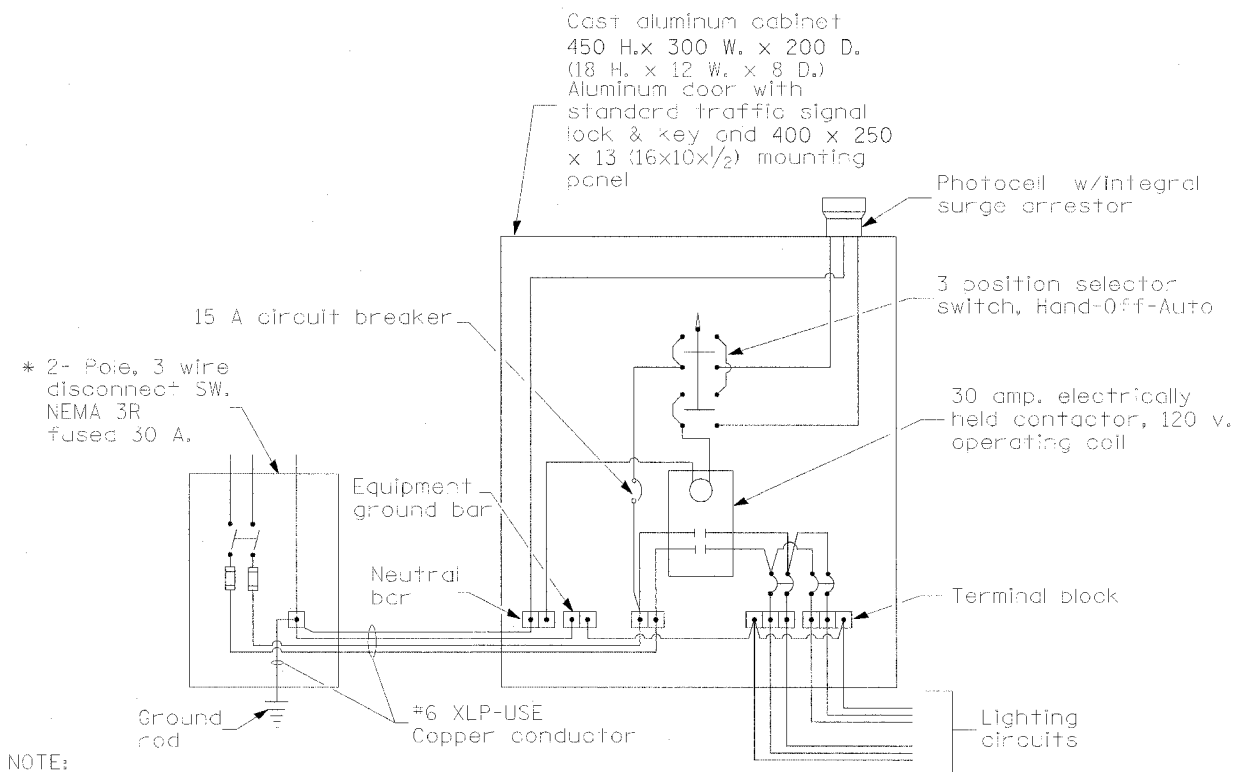


|                       |         |                           |              |           |
|-----------------------|---------|---------------------------|--------------|-----------|
| F.A.P. RTE.           | SECTION | COUNTY                    | TOTAL SHEETS | SHEET NO. |
| 315                   | 55-2    | McDONOUGH                 | 1025         | 430       |
| STA.                  |         | TO STA.                   |              |           |
| FED. ROAD DIST. NO. 4 |         | ILLINOIS FED. AID PROJECT |              |           |



POLE MOUNTED CABINET



NOTE:  
 \* The electrical control panel shall comply with UL 508.  
 30 A. or 60 A., dependent upon utility co. rules.

DISCONNECT SWITCH

WIRING DIAGRAM

**GENERAL NOTES**

The electrical control panel shall comply with UL 508.

All dimensions are in millimeters unless otherwise shown.

| REVISIONS |      | ILLINOIS DEPARTMENT OF TRANSPORTATION   |
|-----------|------|---|
| NAME      | DATE |   |
|           |      | <b>LIGHTING DETAILS</b><br><b>LIGHTING CONTROLLER, PHOTO CELL RELAY,</b><br><b>SERVICE POLE MOUNTED, CAST CABINET</b><br><b>IL. ROUTE 336</b> |
|           |      |   |
|           |      |   |
|           |      |   |
|           |      |   |
|           |      |   |
|           |      |   |
|           |      |   |
|           |      |   |
|           |      |   |

DATE 3/30/06

DRAWN BY  
 CHECKED BY