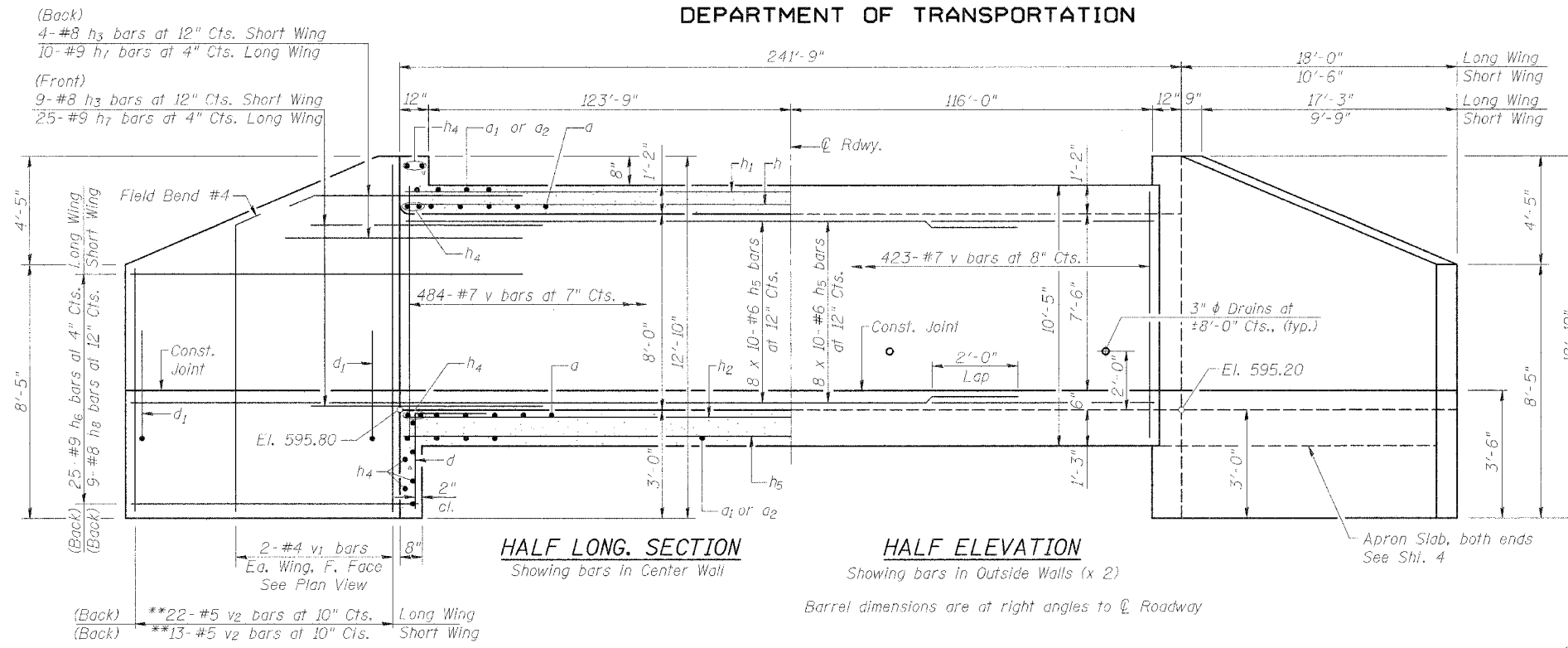


STATE OF ILLINOIS  
DEPARTMENT OF TRANSPORTATION

ROUTE NO.	SECTION	COUNTY	TOTAL SHEETS	SHEET NO.
F.A.P. 315	55-2	MCDONOUGH	1025	437
FED. ROAD DIST. NO. 4	ILLINOIS	FED. AID PROJECT-		

SHEET NO. 3  
7 SHEETS

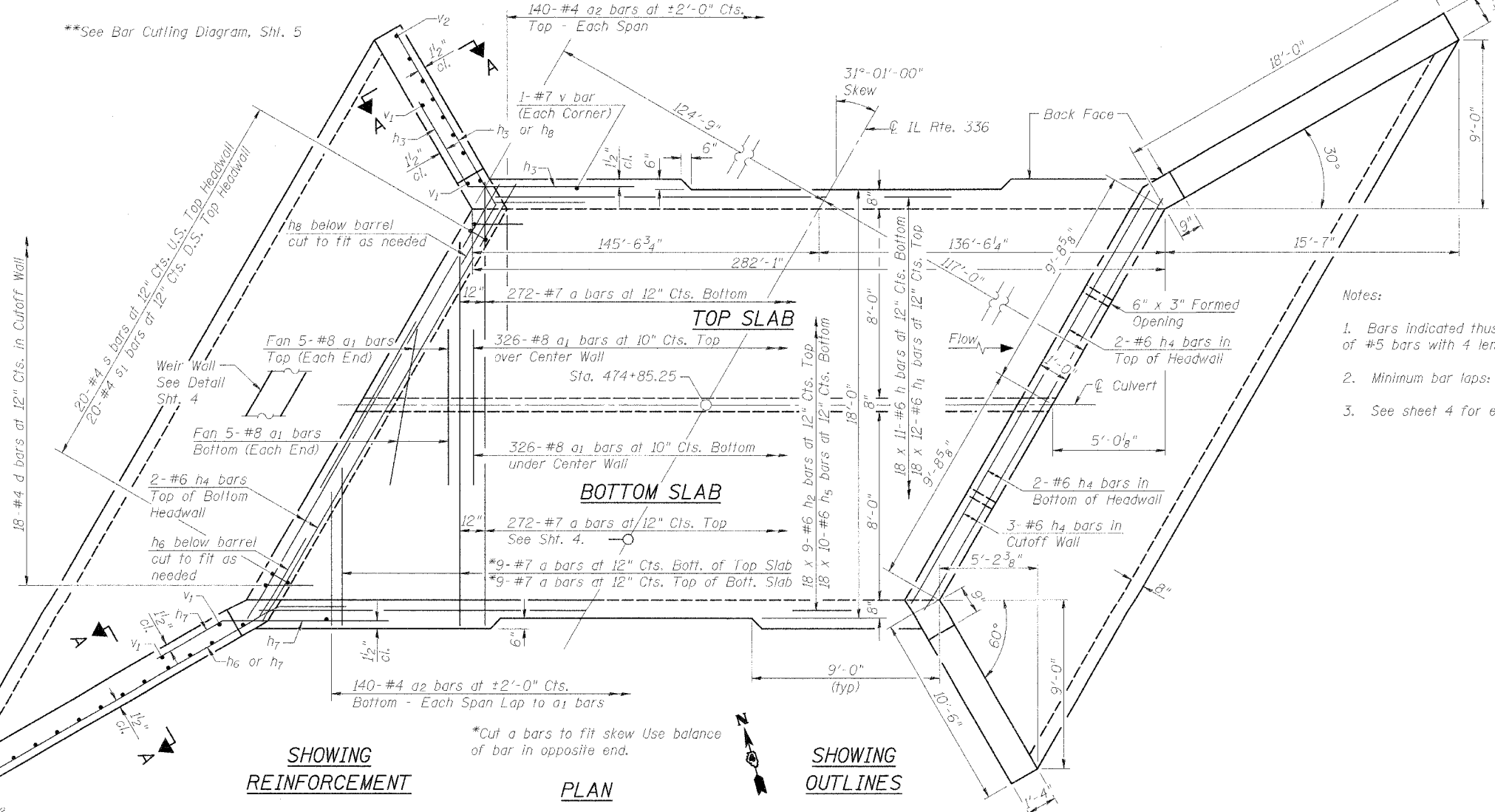
Contract No. 68205



**HALF LONG. SECTION**  
Showing bars in Center Wall

**HALF ELEVATION**  
Showing bars in Outside Walls (x 2)

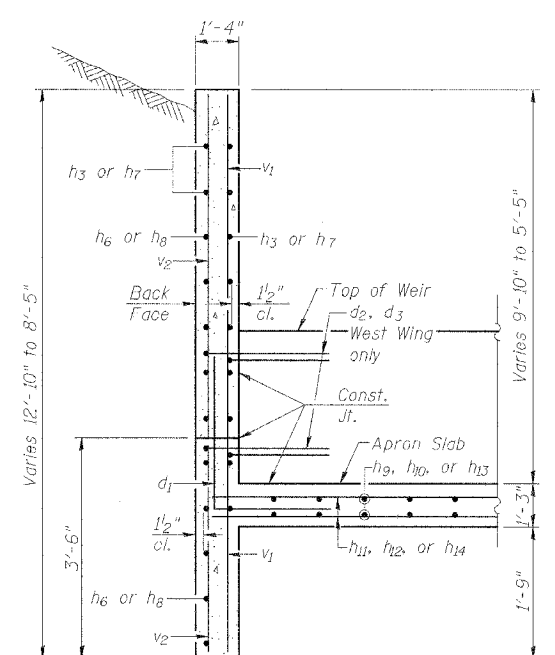
Barrel dimensions are at right angles to  $\phi$  Roadway



**SHOWING REINFORCEMENT**

**PLAN**

**SHOWING OUTLINES**



**SECTION A-A**  
Wing Section

- Notes:
1. Bars indicated thus: 12 x 4 - #5 etc. indicates 12 lines of #5 bars with 4 lengths per line.
  2. Minimum bar laps: #6 bars = 2'-0"
  3. See sheet 4 for extra reinforcement at 24" opening.

PLAN & ELEVATION  
IL. ROUTE 336 OVER  
TRIBUTARY TO KILLJORDAN CREEK  
IL. ROUTE 336  
F.A.P. ROUTE 315 SECT. 55-2  
MCDONOUGH COUNTY  
STATION 474+85.25  
STRUCTURE NO. 055-2501

DESIGNED	LLV
CHECKED	PJL
DRAWN	MGM
CHECKED	LLV

**STS CONSULTANTS**  
111 N. Jefferson Ave.  
Peoria, Illinois 61602  
Ph (309) 676-8464  
FAX (309) 676-5445  
IL Design Firm Reg. No. 184-001518