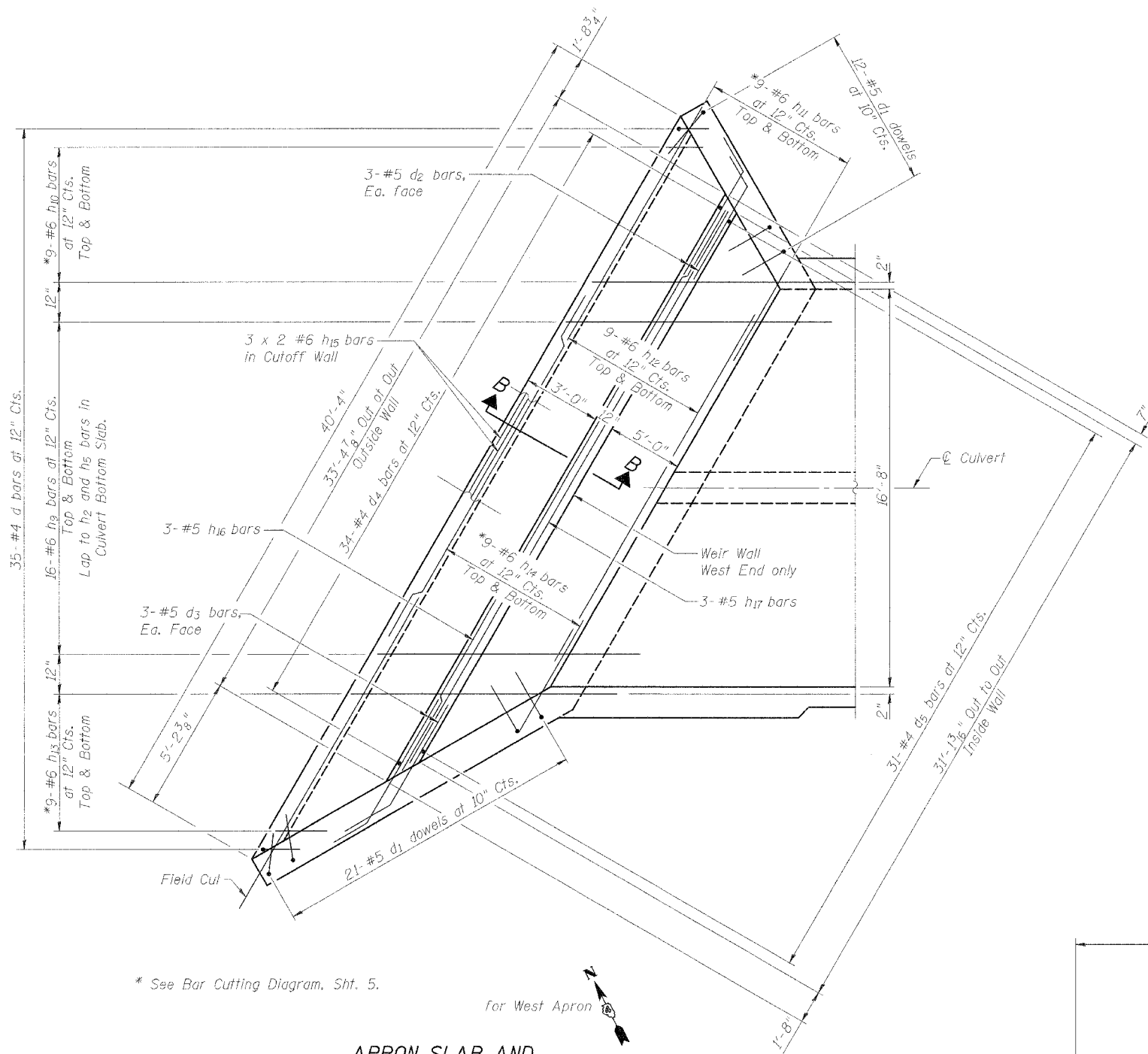


STATE OF ILLINOIS  
DEPARTMENT OF TRANSPORTATION

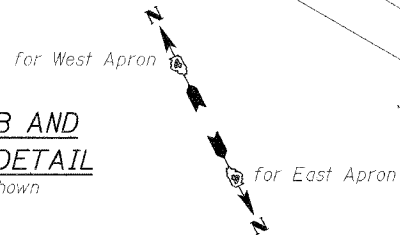
ROUTE NO.	SECTION	COUNTY	TOTAL SHEETS	SHEET NO.
F.A.P. 315	55-2	MCDONOUGH	1025	438
FED. ROAD DIST. NO.		ILLINOIS	FED. AID PROJECT	

Contract No. 68205

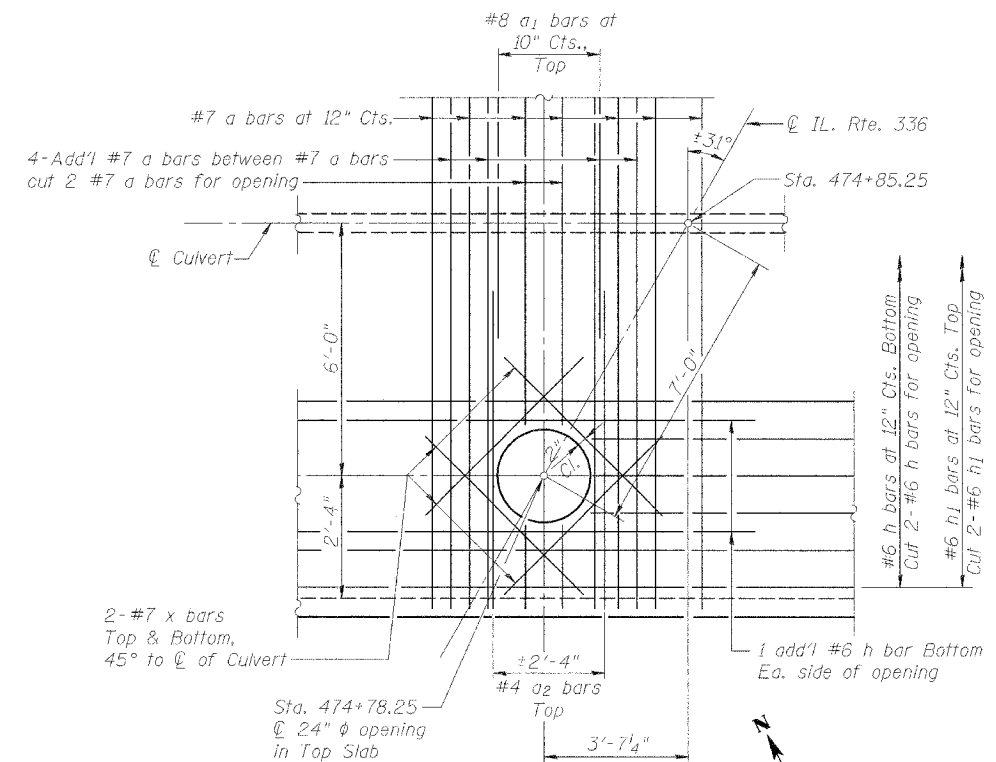


\* See Bar Cutting Diagram, Sht. 5.

**APRON SLAB AND WEIR WALL DETAIL**  
West Apron Shown



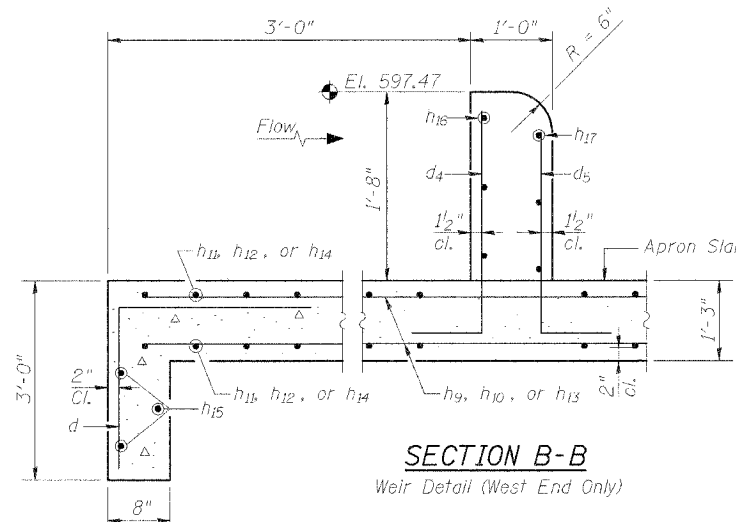
DESIGNED	LLV
CHECKED	PJL
DRAWN	MGM
CHECKED	LLV



**PARTIAL PLAN TOP SLAB**  
At 24" phi Opening

Notes:

1. Bars indicated thus: 12 x 4 - #5 etc. indicates 12 lines of #5 bars with 4 lengths per line.
2. Minimum Bar Laps: #6 bars = 2'-0"



**SECTION B-B**  
Weir Detail (West End Only)

**APRON & WEIR WALL DETAILS**  
IL. ROUTE 336 OVER  
TRIBUTARY TO KILLJORDAN CREEK  
IL. ROUTE 336  
F.A.P. ROUTE 315 SECT. 55-2  
MCDONOUGH COUNTY  
STATION 474+85.25  
STRUCTURE NO. 055-2501

**STS CONSULTANTS**  
111 NE Jefferson Ave.  
Peoria, Illinois 61602  
Ph(309)576-8464  
FAX(309)676-5445  
IL Design Firm Reg. No. 184-001518

3/22/2005 8:18:13 AM