

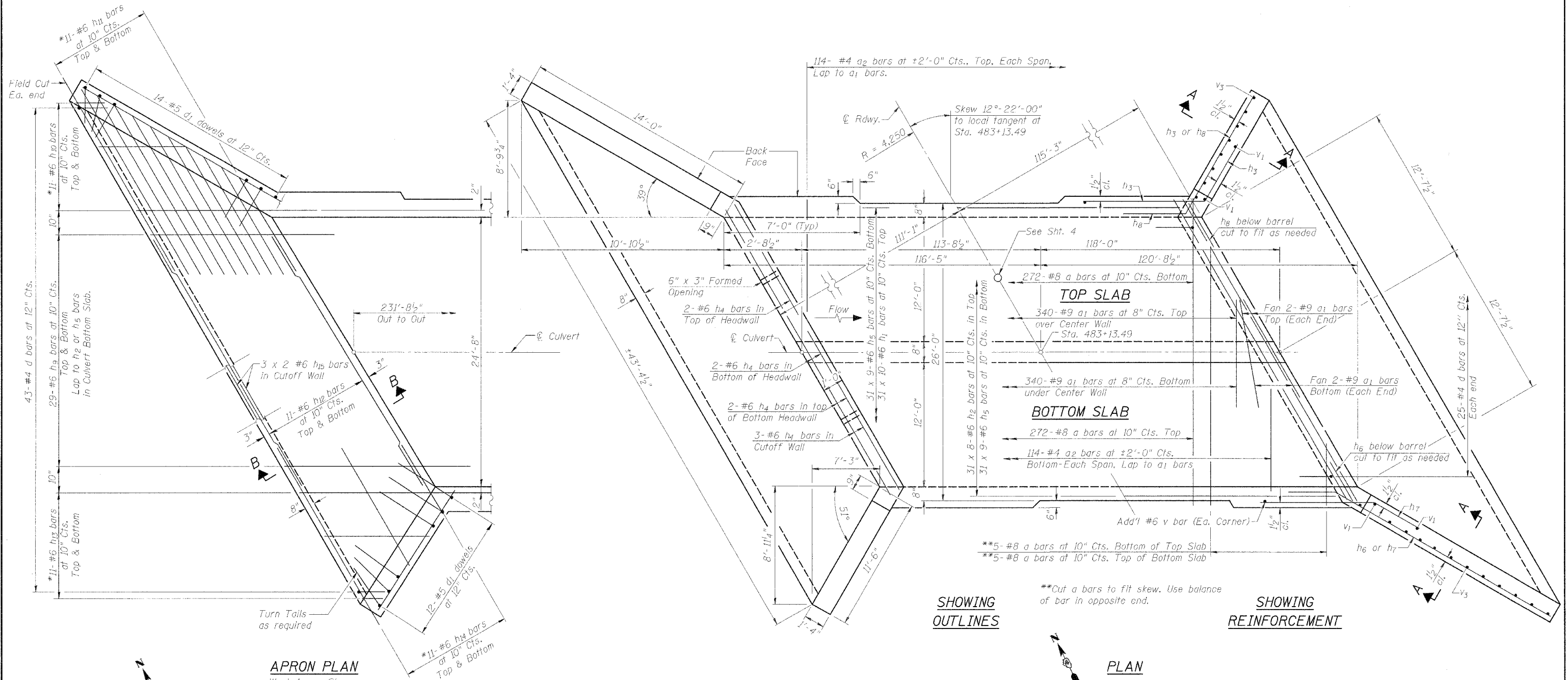
STATE OF ILLINOIS  
DEPARTMENT OF TRANSPORTATION

ROUTE NO.	SECTION	COUNTY	TOTAL SHEETS	SHEET NO.
F.A.P. 315	55-2	MCDONOUGH	1025	444
FMS ROAD DIST. NO. 4	ILLINOIS	FED. AID PROJECT		

SHEET NO. 3

7 SHEETS

Contract No. 68205



**APRON PLAN**  
West Apron Shown

\* See Bar Cutting Diagram, Sht. 5

**SHOWING  
OUTLINES**

\*\*Cut a bars to fit skew. Use balance of bar in opposite end.

**SHOWING  
REINFORCEMENT**

**PLAN**

Notes:

1. Bars indicated thus: 12 x 4 - #5 etc. indicates 12 lines of #5 bars with 4 lengths per line.
2. For Section A-A, See Sht. 4
3. For Section B-B, See Sht. 5
4. Minimum bar laps: #6 bars = 2'-0"
5. See Sht. 4 for extra reinforcement at 24"  $\phi$  opening.

DESIGNED	LLV
CHECKED	PJL
DRAWN	MGM
CHECKED	LLV

PLAN WITH APRON DETAIL  
IL. ROUTE 336 OVER  
TRIBUTARY TO KILLJORDAN CREEK  
IL. ROUTE 336  
F.A.P. ROUTE 315 SECT. 55-2  
MCDONOUGH COUNTY  
STATION 483+13.49  
STRUCTURE NO. 055-2503

**STS CONSULTANTS**  
111 NE Jefferson Ave.  
Peoria, Illinois 61602  
Ph (309) 676-8464  
FAX (309) 676-5445  
IL Design Firm Reg. No. 184-001518