

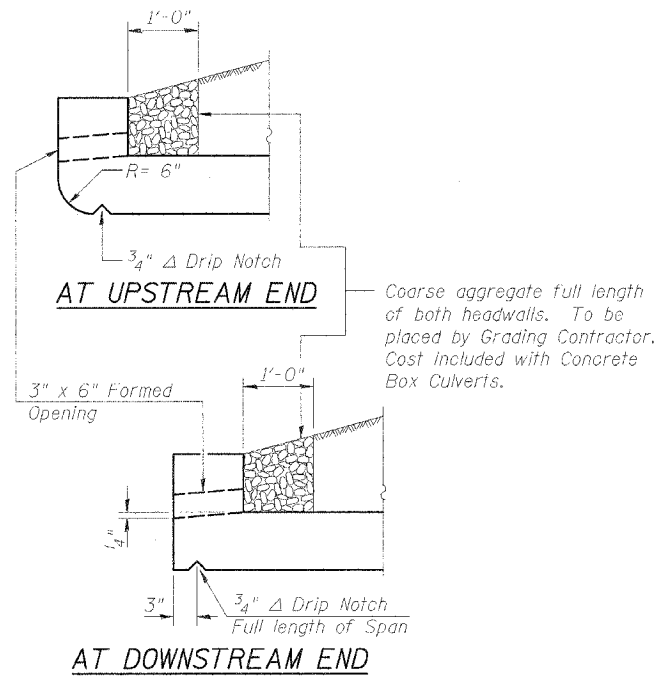
STATE OF ILLINOIS  
DEPARTMENT OF TRANSPORTATION

ROUTE NO.	SECTION	COUNTY	TOTAL SHEETS	SHEET NO.
F.A.P. 315	55-2	MCDONOUGH	1025	446
FED. ROAD DIST. NO. 4	ILLINOIS	FULL AND PROJECT		

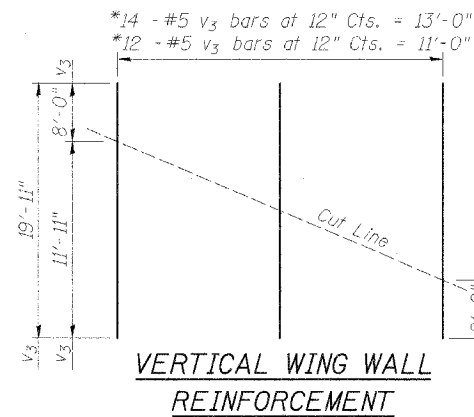
SHEET NO. 5

7 SHEETS

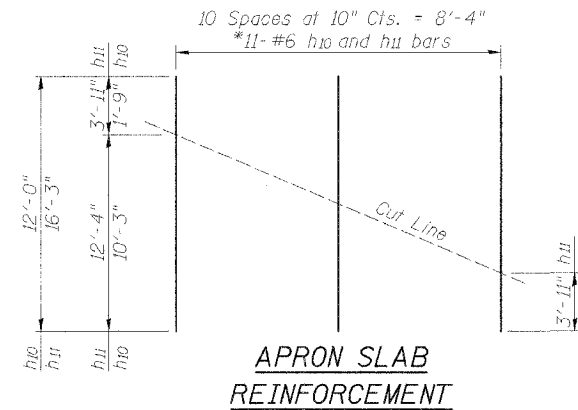
Contract No. 68205



DRAIN DETAIL

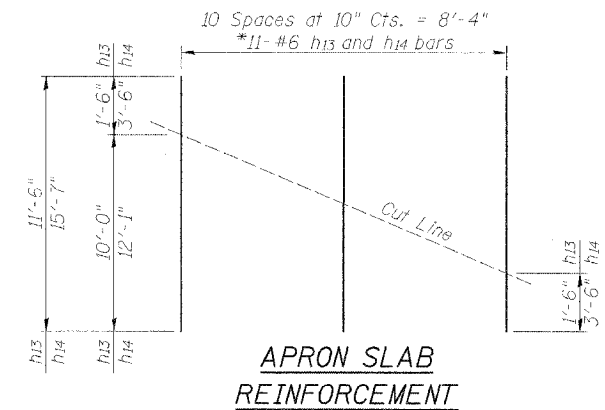


\*Order  $v_3$  bars full length. Cut as shown. Use remainder of bars in similar wing.



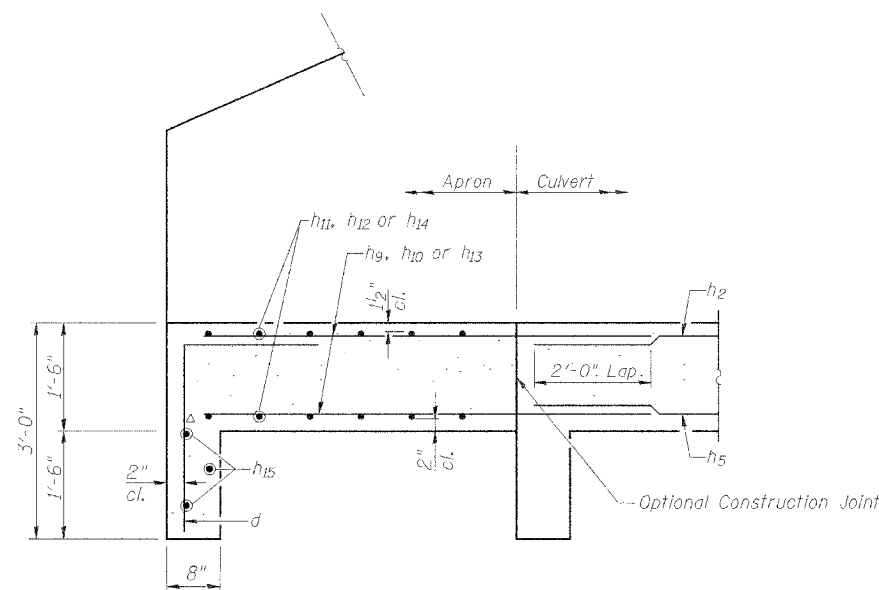
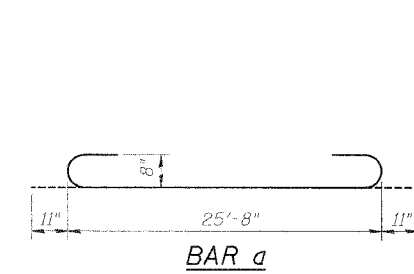
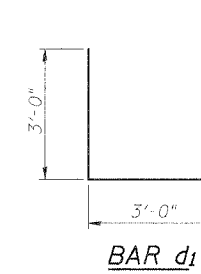
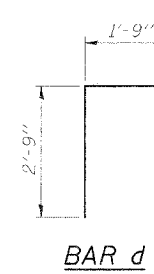
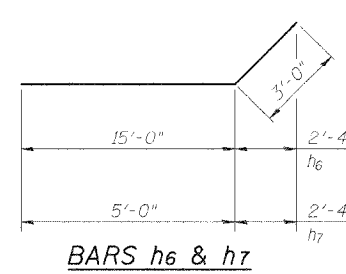
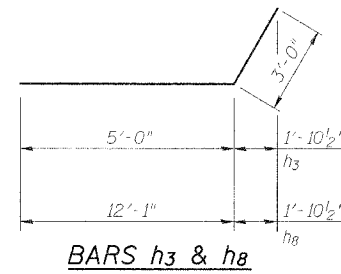
Two thus at Long Wing

\*Order  $h_{10}$  and  $h_{11}$  bars full length. Cut as shown. Use remainder of bars in opposite face of slab.



Two thus at Short Wing

\*Order  $h_{13}$  and  $h_{14}$  bars full length. Cut as shown. Use remainder of bars in opposite face of slab.



DESIGNED	LLV
CHECKED	PJL
DRAWN	MGM
CHECKED	LLV

REINFORCEMENT BARS  
IL. ROUTE 336 OVER  
TRIBUTARY TO KILLJORDAN CREEK  
IL. ROUTE 336  
F.A.P. ROUTE 315 SECT. 55-2  
MCDONOUGH COUNTY  
STATION 483+13.49  
STRUCTURE NO. 055-2503

**STS CONSULTANTS**  
111 NE Jefferson Ave.  
Peoria, Illinois 61602  
Ph.(309)676-8464  
FAX(309)676-5445  
IL Design Firm Reg. No. 184-001518