

STATE OF ILLINOIS
DEPARTMENT OF TRANSPORTATION

ROUTE NO.	SECTION	COUNTY	DATE SHEETS	SHEET NO.
F.A.P. 315	55-2	McDONOUGH	1025	450
FED. ROAD DIST. NO. 4	ILLINOIS	FED. AID PROJECT-		

SHEET NO. 2
8 SHEETS

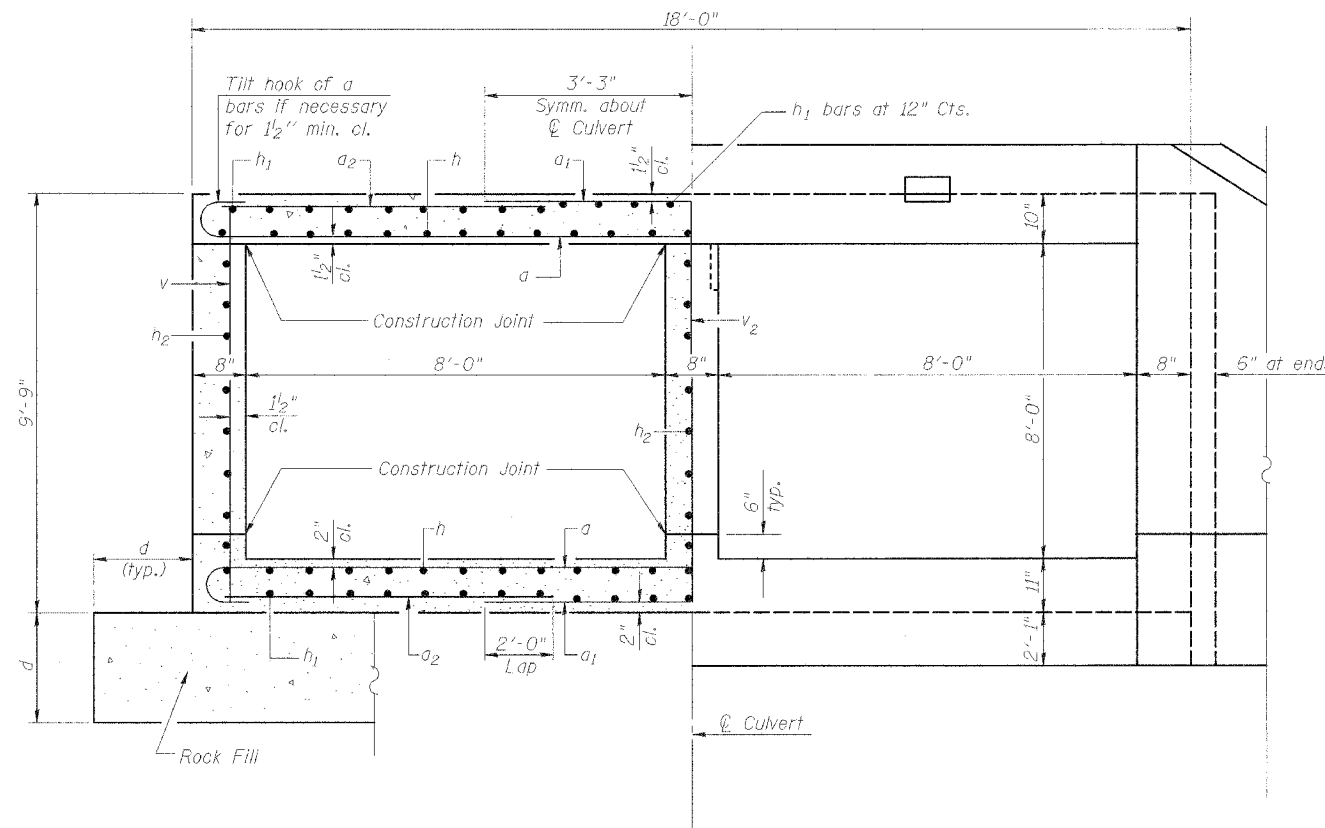
Contract No. 68205

GENERAL NOTES

1. Pre-cast alternate not allowed.
2. The limits and quantities of removal shown are based on the boring data and may be modified by the District Geotechnical Engineer and field engineers for variable subsurface conditions encountered in the field.
3. Contact District Geotechnical Engineer so a dynamic cone penetration test can be performed to determine actual limits of excavation of unsuitable material in the field.
4. All construction joints shall be bonded.
5. Reinforcement bars shall conform to the requirements of AASHTO M31 or M322 Grade 60.
6. For backfilling and embankment, see Standard Specifications.
7. Exposed edges shall be beveled $\frac{3}{4}$ " unless otherwise noted.

TOTAL BILL OF MATERIAL

ITEM	UNIT	TOTAL
Name Plates	Each	1
Concrete Box Culverts	Cu. Yd.	193.7
Reinforcement Bars	Pound	30,470
Rock Fill Foundation	Cu. Yd.	377
Removal & Disposal of Unsuitable Material	Cu. Yd.	379
Removal of Existing Structures	Each	1



**HALF SECTION
THRU BARREL**

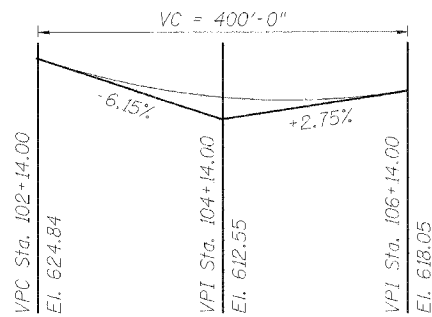
HALF END ELEVATION

Notes:

1. A distance of half the length of the wingwall but not less than seven feet of the barrel shall be poured monolithically with the wingwalls.
2. Bars indicated thus: 12 x 4-#5 etc. indicates 12 lines of #5 bars with 4 lengths per line.

BOX CULVERT DESIGN CRITERIA

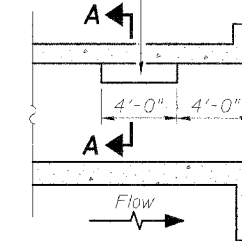
f Min. / f Max. (Feet)	Design Fill Height (F) (Feet)	AASHTO Designation
f Min. $\geq 4'$	9'	M259



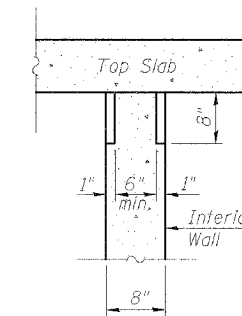
PROFILE GRADE

DESIGNED	LLV
CHECKED	P.J.L.
DRAWN	M.G.M.
CHECKED	LLV

Notch formed by rough finished board attached to and removed with formwork, each interior wall. (Do not chamfer).



LONGITUDINAL SECTION



SECTION A-A

**PHOEBE NESTING
SITE DETAILS
(Downstream End Only)**

GENERAL NOTES &
TOTAL BILL OF MATERIAL
TWP. ROAD 226 OVER
TRIBUTARY TO KILLJORDAN CREEK
IL. ROUTE 336
F.A.P. ROUTE 315 SECT. 55-2
McDONOUGH COUNTY
STATION 104+35.44
STRUCTURE NO. 055-2502

STS CONSULTANTS
111 NE Jefferson Ave.
Peoria, Illinois 61602
Ph (309) 676-8464
FAX (309) 676-5445
IL Design Firm Reg. No. 184-001518