

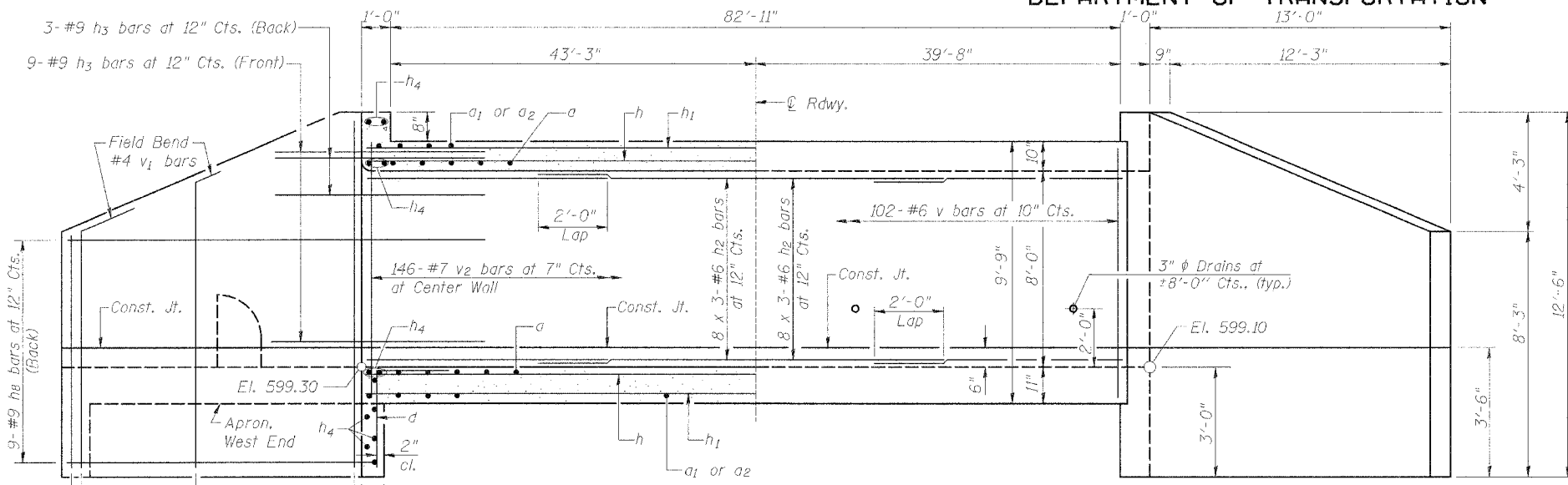
STATE OF ILLINOIS
DEPARTMENT OF TRANSPORTATION

ROUTE NO.	SECTION	COUNTY	DISTRICT	SHEET NO.
F.A.P. 315	55-2	MCDONOUGH	1025	451
FED. ROAD DIST. NO. 4	ILLINOIS	FED. AID PROJECT		

SHEET NO. 3

8 SHEETS

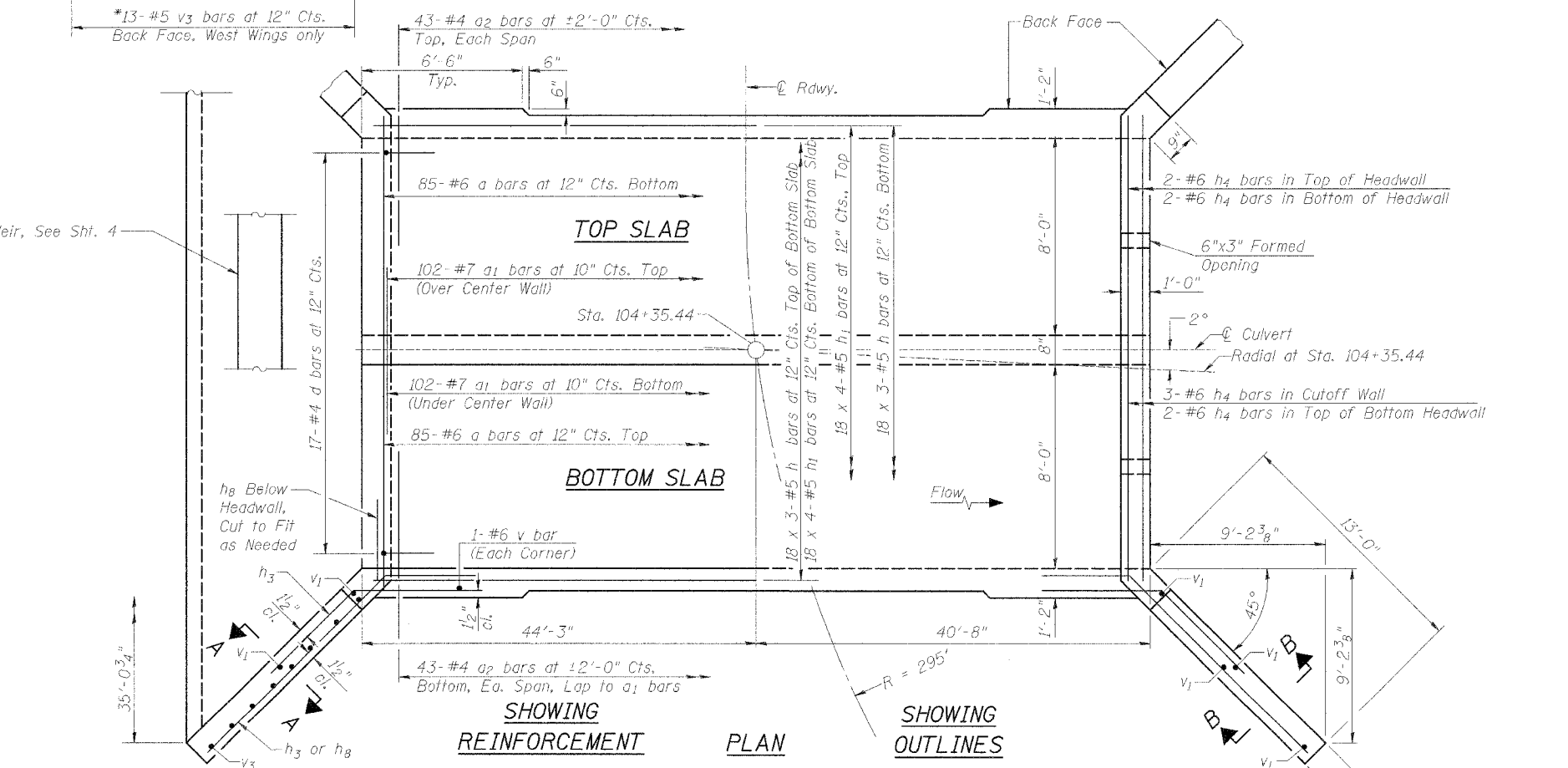
Contract No. 58205



HALF LONG SECTION
Showing bars in Center Wall

HALF ELEVATION
Showing bars in Outside Wall (x 2)

Barrel Dimensions are at Rt. L's to Roadway



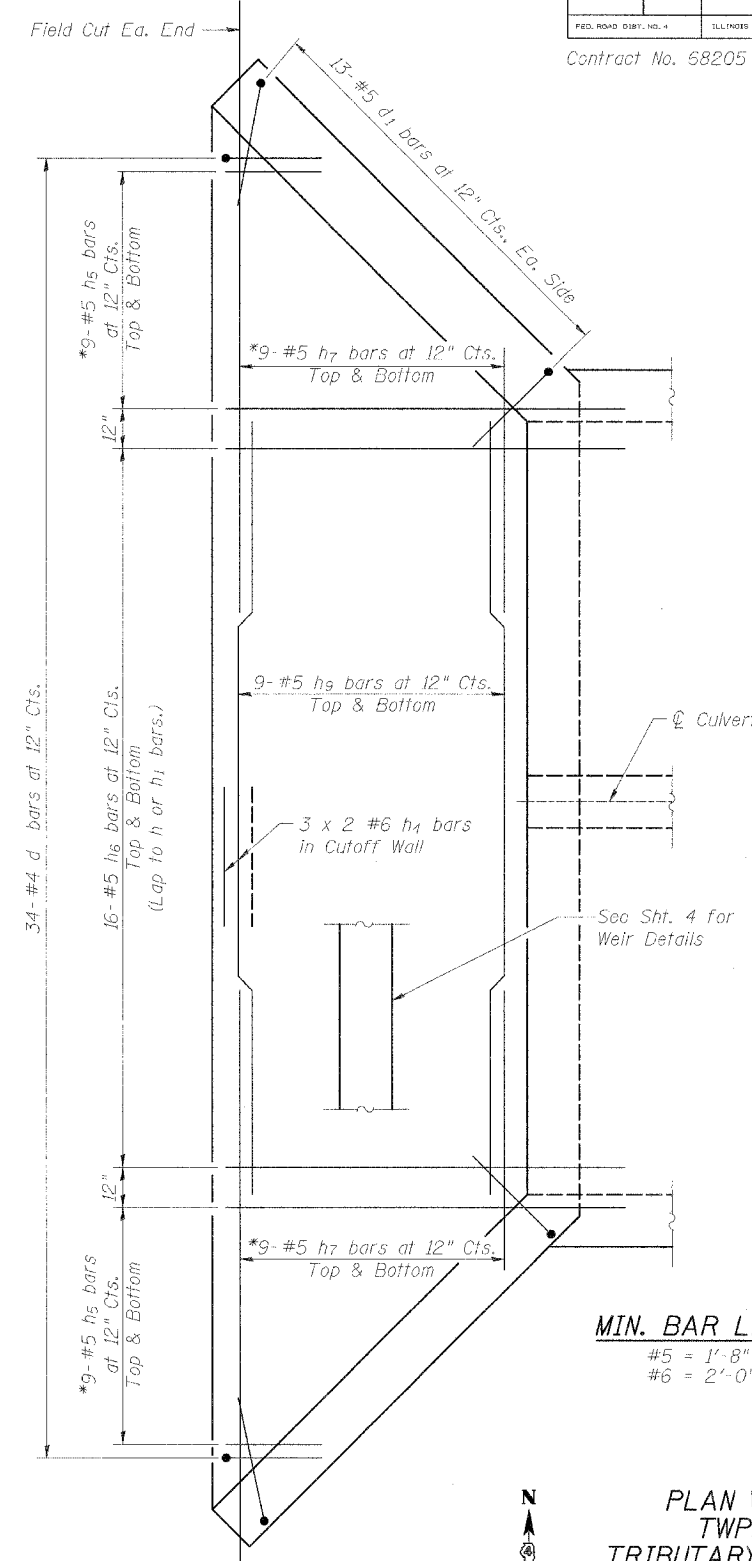
SHOWING REINFORCEMENT PLAN

SHOWING OUTLINES PLAN

Notes:

1. A distance of half the length of the wingwall but not less than seven feet of the barrel shall be poured monolithically with the wingwalls.
2. Bars indicated thus: 12 x 4-#5 etc. indicates 12 lines of #5 bars with 4 lengths per line.
3. See Sht. 4 for Section A-A and Section B-B.

DESIGNED	LLV
CHECKED	PJL
DRAWN	MGM
CHECKED	LLV



APRON PLAN
West End Only

* See Bar Cutting Diagram Sht. 4

MIN. BAR LAPS
#5 = 1'-8"
#6 = 2'-0"

PLAN WITH APRON DETAIL
TWP. ROAD 226 OVER
TRIBUTARY TO KILLJORDAN CREEK
IL. ROUTE 336
F.A.P. ROUTE 315 SECT. 55-2
MCDONOUGH COUNTY
STATION 104+35.44
STRUCTURE NO. 055-2502

STS CONSULTANTS
111 NE Jefferson Ave.
Peoria, Illinois 61602
Ph (309) 676-8464
FAX (309) 676-5445
IL Design Firm Reg. No. 184-001518