

GENERAL NOTES

- 1.) Reinforcement bars shall conform to the requirements of AASHTO M31 or M32.2 Grade 60.
- 2.) The embankment configuration shown shall be the minimum embankment that must be constructed prior to construction of the abutments.
- 3.) Piles at abutments shall be driven through 18" ϕ holes precored through the embankment according to Article 512.10(c) of the Standard Specifications. Precored holes shall extend to elevations, thus:

	E.B.	W.B.
W. Abut.	El. 672.40	El. 669.30
E. Abut.	El. 673.30	El. 669.30

- 4.) The contractor shall drive four steel H-pile test piles in permanent locations as directed by the Engineer before ordering the remainder of piles, thus:

Number	Steel H-pile test pile, typ.	Location
1	HP 10 x 57	W.B., W. Abut.
1	HP 12 x 63	E.B., Pier #1
1	HP 12 x 63	W.B., Pier #2
1	HP 10 x 57	E.B., E. Abut.

- 5.) When the deck pour is stopped for the day at one or more of the transverse Bonded Construction Joints in the deck Pouring Sequence as shown on the deck plan Sht. 7 of 22, the next pour shall not be made until both of the following requirements are met:

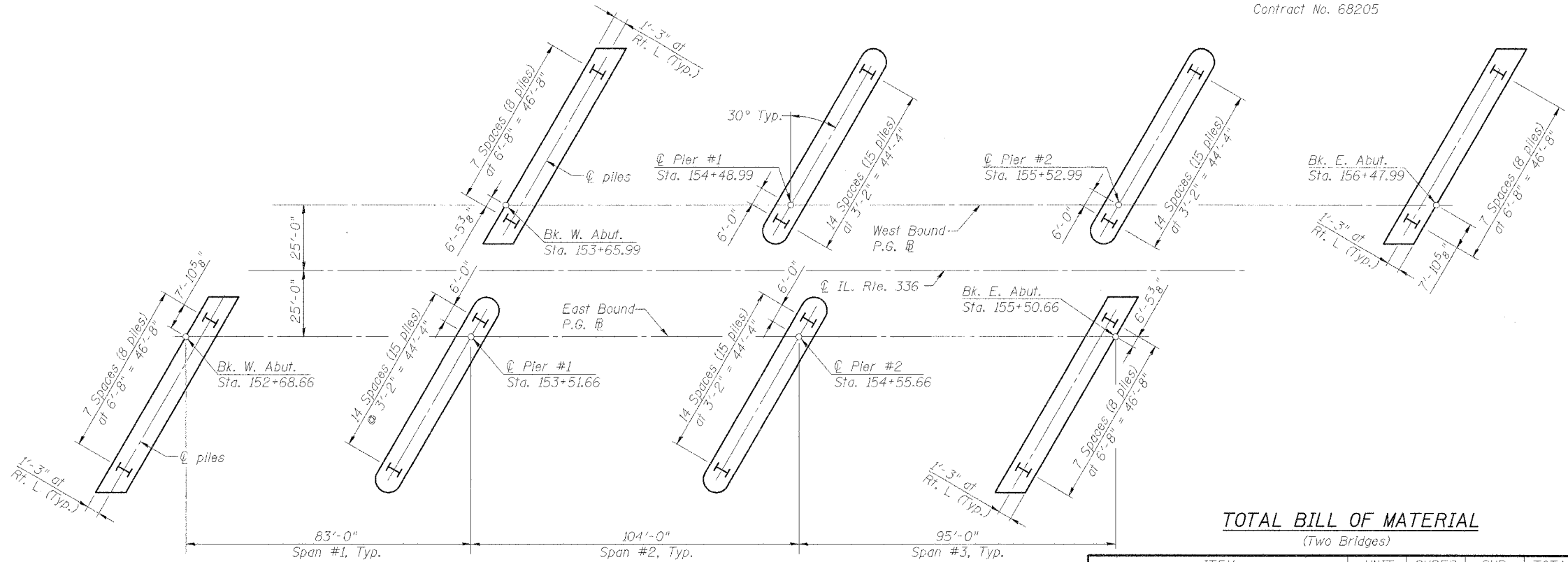
1. At least 72 hours shall have elapsed from the end of the previous pour.
2. The concrete strength shall have attained a minimum flexural strength of 650 psi or a minimum compressive strength of 3500 psi.

- 6.) All construction joints shall be bonded.

**STATE OF ILLINOIS
DEPARTMENT OF TRANSPORTATION**

ROUTE NO.	SECTION	COUNTY	TOTAL SHEETS	SHEET NO.
F.A.P. 315	55-2	McDONOUGH	1025	458

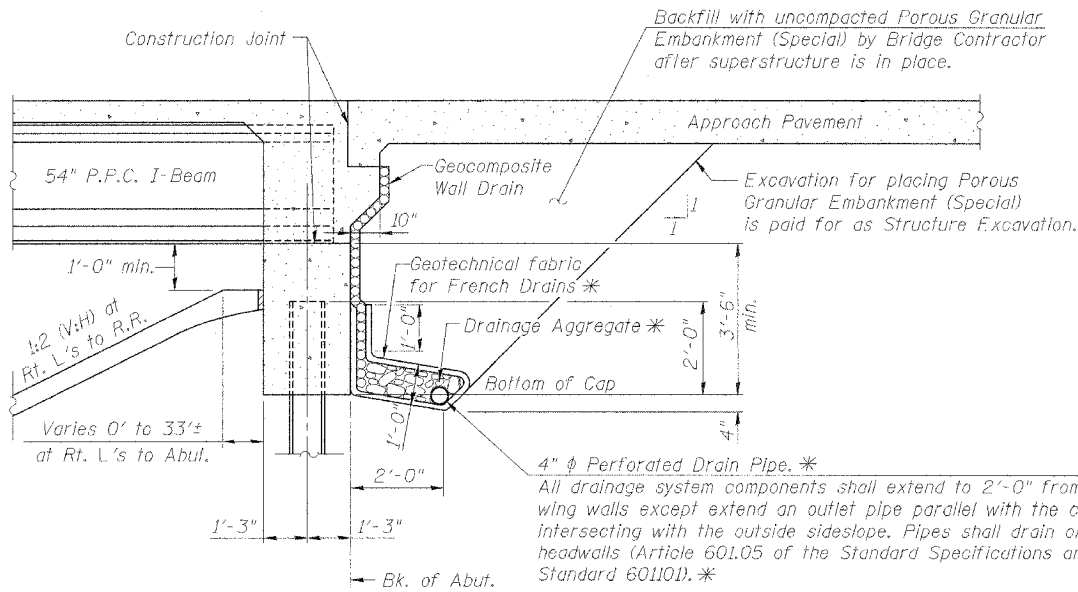
Contract No. 68205



TOTAL BILL OF MATERIAL
(Two Bridges)

ITEM	UNIT	SUPER	SUB	TOTAL
Structure Excavation	Cu. Yd.		1,087	1,087
Floor Drains	Each	24		24
Concrete Structures	Cu. Yd.		650.5	650.5
Concrete Superstructure	Cu. Yd.	854.6		854.6
Protective Coat	Sq. Yd.	3,060		3,060
Furnishing and Erecting Precast Prestressed Concrete I-beams, 54"	Foot	4,466		4,466
Reinforcement Bars, Epoxy Coated	Pound	172,660	66,860	239,520
Test Pile Steel HP 10 x 57	Each	2		2
Test Pile Steel HP 12 x 63	Each		2	2
Furnishing Steel Piles HP 10 x 57	Foot	2,455		2,455
Furnishing Steel Piles HP 12 x 63	Foot	5,225		5,225
Driving Steel Piles	Foot		7,680	7,680
Name Plates	Each	2		2
Bridge Deck Grooving	Sq. Yd.	2,382		2,382
Bituminous Coated Aggregate Slope Wall, 6"	Sq. Yd.		2,935	2,935
Porous Granular Embankment (Special)	Cu. Yd.		440	440
Bar Splicers	Each	160		160
Pipe Underdrains for Structures, 4"	Foot		312	312
Geocomposite Wall Drain	Sq. Yd.		230	230

SUBSTRUCTURE LAYOUT

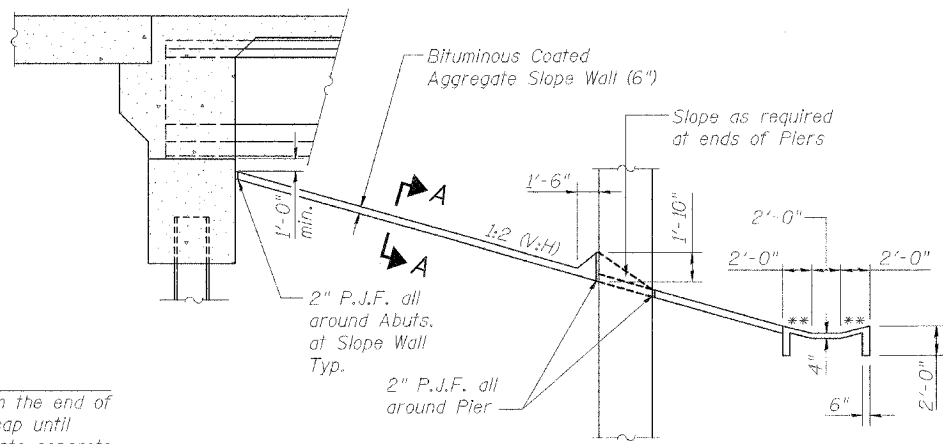


SECTION THRU INTEGRAL ABUTMENT

All horizontal dimensions at Rt. L.'s to abutment unless otherwise noted.

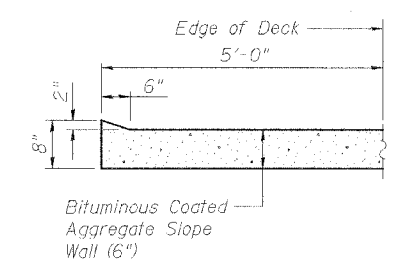
DESIGNED	P.J.L.
CHECKED	LLV
DRAWN	MGM
CHECKED	P.J.L.

* Included in the cost of Pipe Underdrains for Structures.



SECTION THRU SLOPE WALL

(Horizontal dimensions @ Rt. L.'s to R.R.)
** = 1:4 (V:H)



SECTION A-A

**TOTAL BILL OF MATERIAL, SLOPE PROTECTION DETAILS, & SUBSTRUCTURE LAYOUT
IL. ROUTE 336 OVER BURLINGTON NORTHERN SANTA FE RAILROAD
F.A.P. ROUTE 315 SECT. 55-2
McDONOUGH COUNTY
STATION 154+56.74
STRUCTURE NO. 055-0052 (EB)
STRUCTURE NO. 055-0053 (WB)**

STS CONSULTANTS
111 NE Jefferson Ave.
Peoria, Illinois 61602
Ph (309) 676-8464
FAX (309) 676-5445
IL Design Firm Reg. No. 184-001518