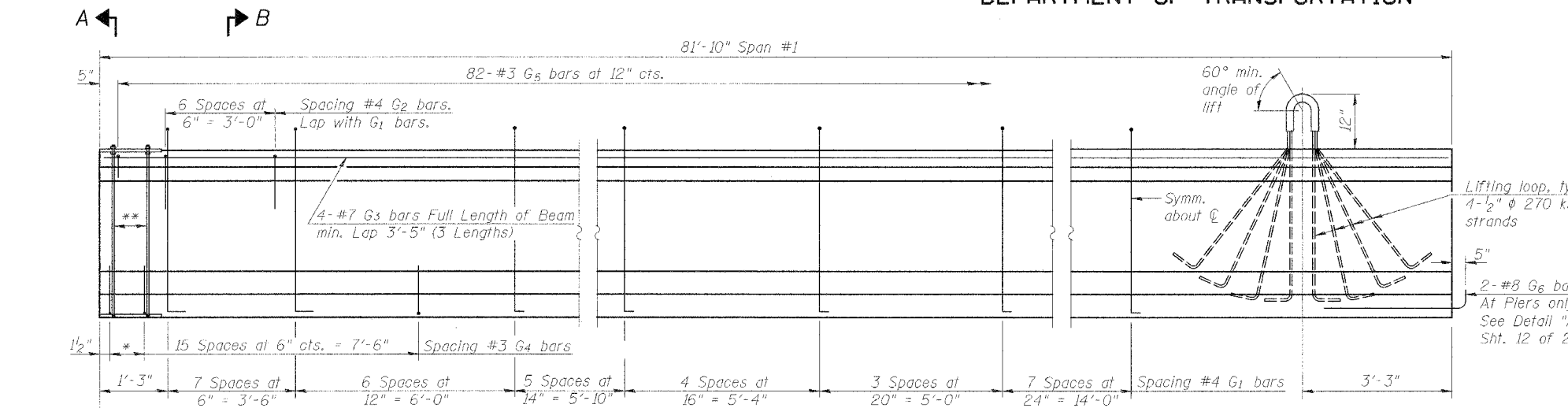


STATE OF ILLINOIS
DEPARTMENT OF TRANSPORTATION

ROUTE NO.	SECTION	COUNTY	TOTAL SHEETS	SHEET NO.
F.A.P. 315	55-2	MCDONOUGH	1025	466
FED. ROAD DIST. NO. 4		ILLINOIS	FED. AID PROJECT	22 SHEETS

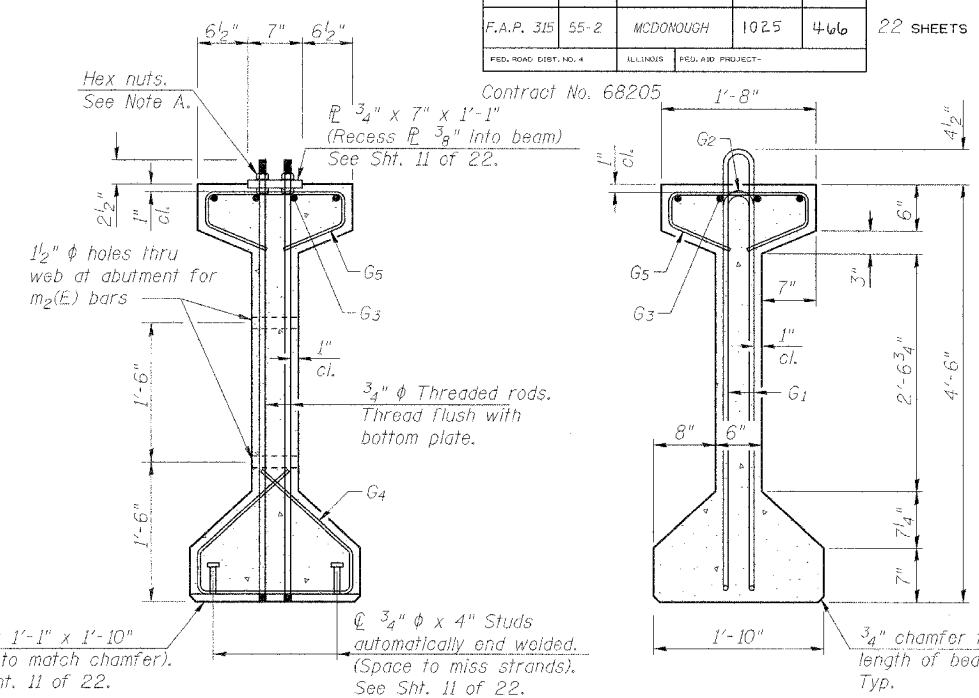
* 3 Spaces at 3" = 9"

** 4-3/4" ϕ threaded dowel rods at 3" cts., ea. face.



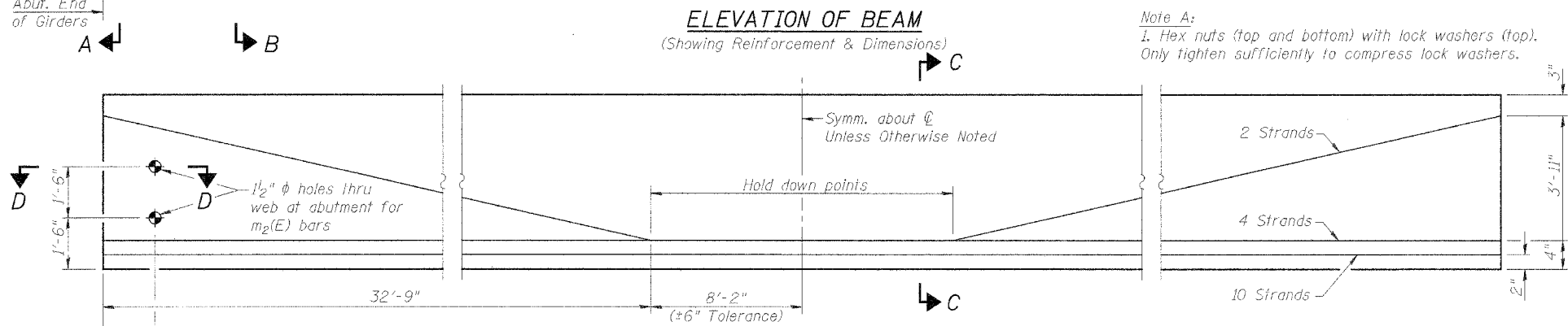
ELEVATION OF BEAM
(Showing Reinforcement & Dimensions)

Note A:
1. Hex nuts (top and bottom) with lock washers (top). Only tighten sufficiently to compress lock washers.



SECTION A-A

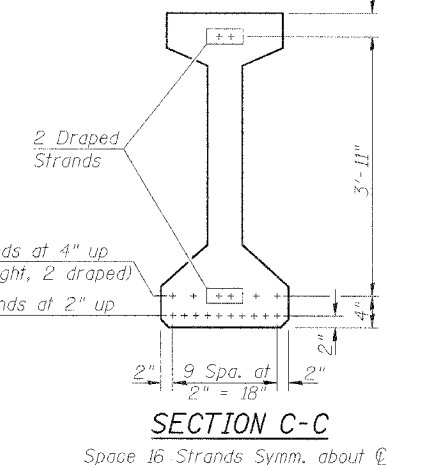
SECTION B-B



ELEVATION OF BEAM
(Showing Prestressing Steel)

BILL OF MATERIAL - SPAN #1
Two Bridges

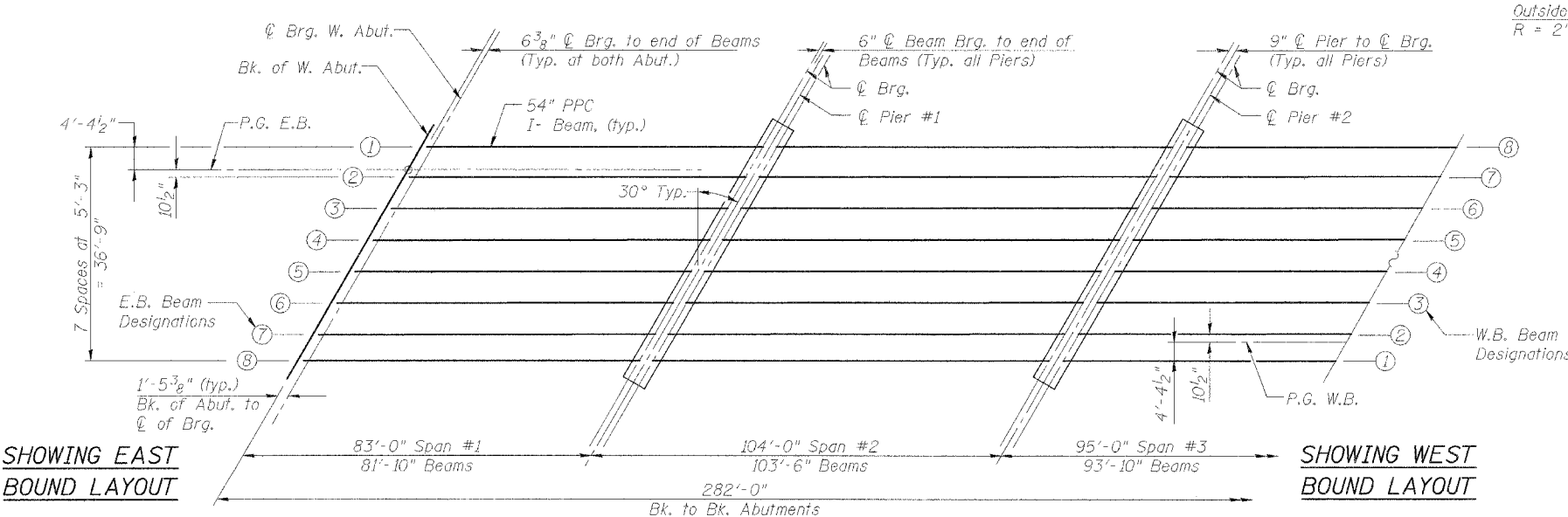
Item	Unit	Total
Furnishing and Erecting Precast Prestressed Concrete I-Beams, 54"	Ft.	1,309



SECTION C-C

BAR LIST, ONE BEAM ONLY

Bar	No.	Size	Length	Shape
G1	65	#4	10'-5"	∩L
G2	14	#4	5'-4"	∩
G3	12	#7	29'-6"	∩
G4	38	#3	4'-11"	∩
G5	82	#3	3'-5"	∩
G6	2	#8	3'-9"	∩



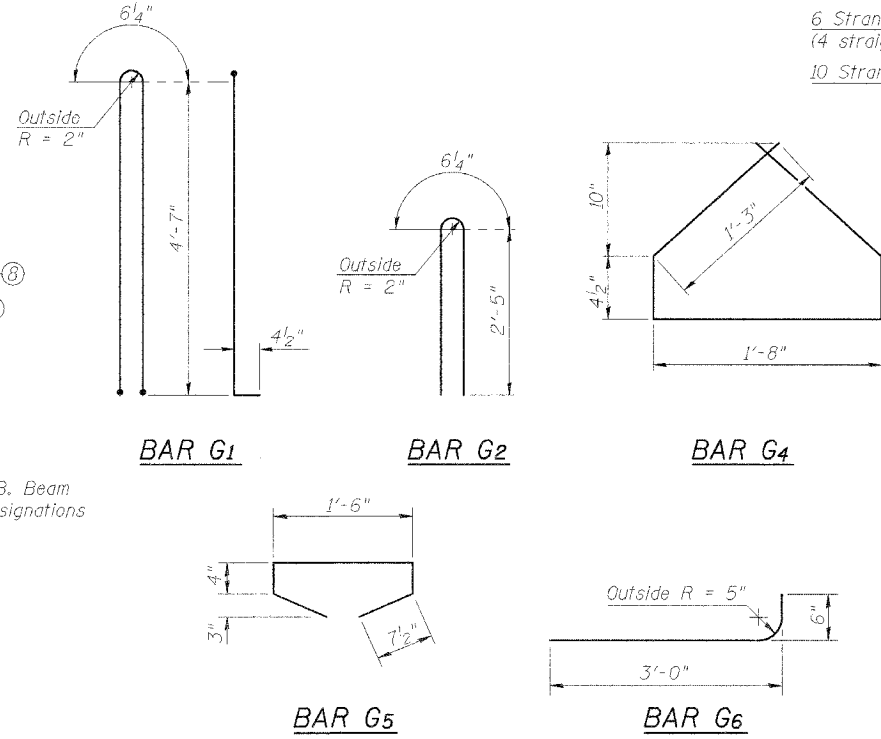
PARTIAL FRAMING PLAN

SHOWING EAST BOUND LAYOUT

SHOWING WEST BOUND LAYOUT



DESIGNED	P.J.L.
CHECKED	LLV
DRAWN	MGM
CHECKED	P.J.L.



CROSS REFERENCE NOTES

- 1.) See Sht. 11 of 22 for Moment and Reaction Tables.
- 2.) See Sht. 12 of 22 for Detail "A" at Pier and Section D-D at Abut.
- 3.) See Sht. 12 of 22 for Typical Lifting Loop Detail.
- 4.) See Sht. 11 of 22 for Top & Bottom End Plate Details
- 5.) See Sht. 12 of 22 for P.P.C. I-Beam Notes.

FRAMING PLAN AND SPAN #1 GIRDER DETAILS
IL. ROUTE 336 OVER BURLINGTON NORTHERN SANTA FE RAILROAD
F.A.P. ROUTE 315 SECT. 55-2
MCDONOUGH COUNTY
STATION 154+56.74
STRUCTURE NO. 055-0052 (EB)
STRUCTURE NO. 055-0053 (WB)

STS CONSULTANTS
111 NE Jefferson Ave.
Peoria, Illinois 61602
Ph (309) 676-8464
FAX (309) 676-5445
IL Design Firm Reg. No. 184-001518