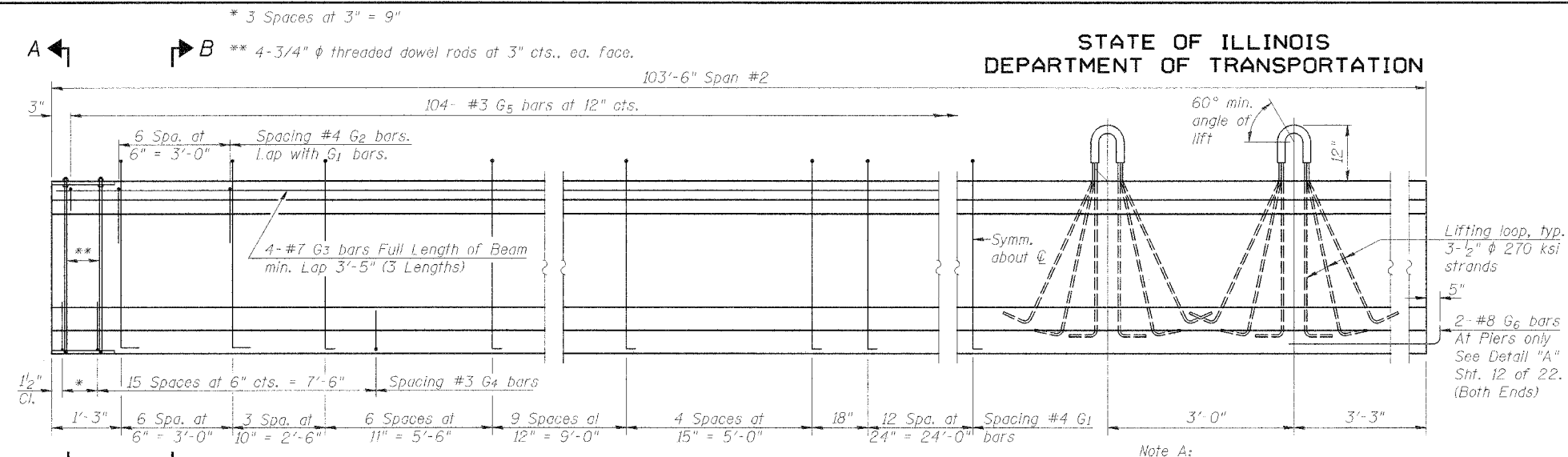


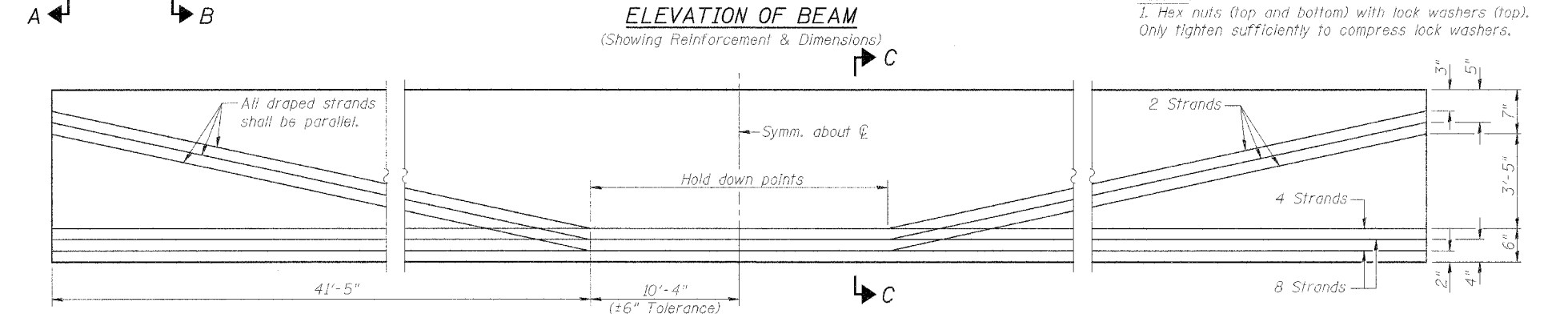
STATE OF ILLINOIS  
DEPARTMENT OF TRANSPORTATION

ROUTE NO.	SHEET NO.	COUNTY	DATE	SHEET NO.	SHEET NO.
F.A.P. 315	55-2	MCDONOUGH	1025	467	22 SHEETS
FED. ROAD DIST. NO. 4	ILLINOIS	FED. AID PROJECT			

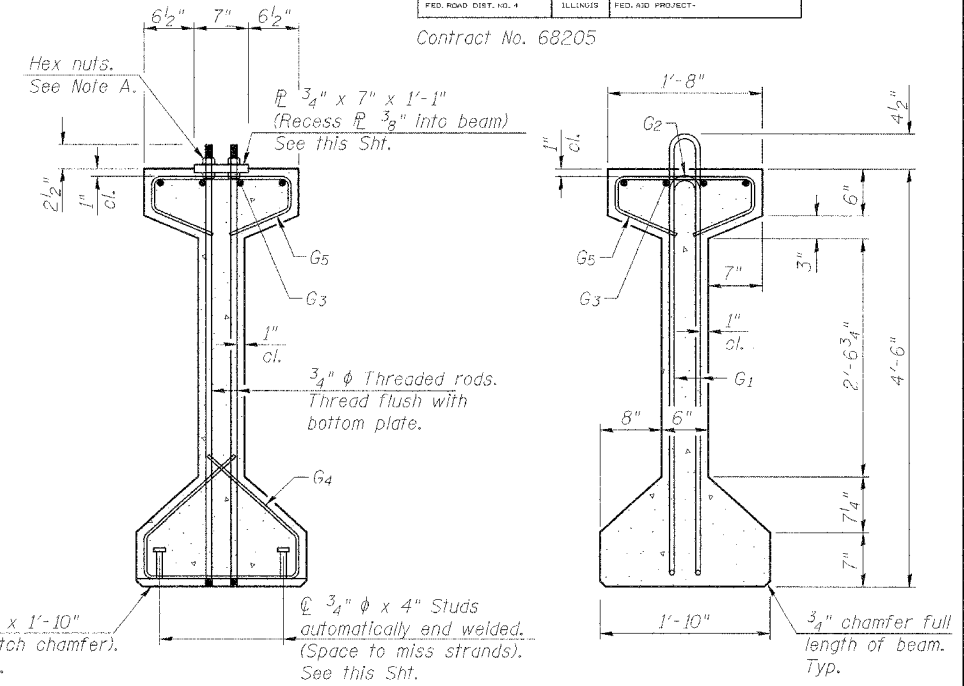
Contract No. 68205



ELEVATION OF BEAM  
(Showing Reinforcement & Dimensions)



ELEVATION OF BEAM  
(Showing Prestressing Steel)



SECTION A-A

SECTION B-B

SECTION C-C

Space 26 Strands Symm. about C

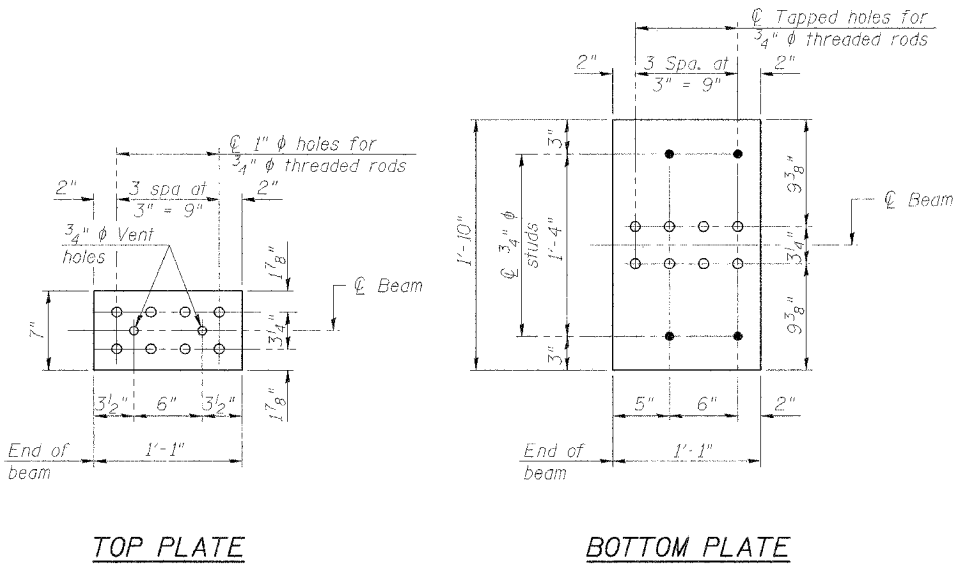
INTERIOR BEAM REACTION TABLE

		Span #1		Span #2		Span #3	
		W. Abut.	Pier #1	Pier #1	Pier #2	Pier #2	E. Abut.
R @	(k)	46.8	46.8	59.6	59.6	53.7	53.7
R <sub>s</sub> @	(k)	11.1	18.4	18.4	20.2	20.2	13.1
R @	(k)	29.6	26.0	26.0	24.1	24.1	30.1
Imp.	(k)	7.2	6.0	6.0	5.4	5.4	6.9
R (Total)	(k)	94.7	97.2	110.0	109.3	103.4	103.8

INTERIOR BEAM MOMENT TABLE

		0.4 Sp. #1	Pier #1	0.5 Sp. #2	Pier #2	0.6 Sp. #3
I	(in <sup>4</sup> )	213,715		213,715		213,715
I'	(in <sup>4</sup> )	457,392		457,392		457,392
S <sub>b</sub>	(in <sup>3</sup> )	8,559		8,559		8,559
S <sub>b</sub> '	(in <sup>3</sup> )	12,264		12,264		12,264
S <sub>t</sub>	(in <sup>3</sup> )	7,362		7,362		7,362
S <sub>t</sub> '	(in <sup>3</sup> )	27,379		27,379		27,379
@	(k/')	1.147		1.147		1.147
M @	(k)	954		1,551		1,255
s @	(k/')	0.362	0.362	0.362	0.362	0.362
M <sub>s</sub> @	(k)	169	305	156	366	235
M @	(k)	463	447	485	491	541
M (IMP)	(k)	112	103	106	110	124

DESIGNED	PJL
CHECKED	LLV
DRAWN	MGM
CHECKED	PJL



BILL OF MATERIAL - SPAN #2

Item	Unit	Total
Furnishing and Erecting Precast Prestressed Concrete I-Beams, 54"	Ft.	1,656

BAR LIST, ONE BEAM ONLY

Bar	No.	Size	Length	Shape
G <sub>1</sub>	83	#4	10'-5"	∩
G <sub>2</sub>	14	#4	5'-4"	∩
G <sub>3</sub>	12	#7	36'-8"	—
G <sub>4</sub>	38	#3	4'-11"	∩
G <sub>5</sub>	104	#3	3'-5"	∩
G <sub>6</sub>	4	#8	3'-9"	∩

CROSS REFERENCE NOTES

- 1.) See Sht. 10 of 22 for Framing Plan.
- 2.) See Sht. 12 of 22 for Detail "A" at Pier.
- 3.) See Sht. 12 of 22 for Typical Lifting Loop Detail.
- 4.) See Sht. 10 of 22 for Bar Bends
- 5.) See Sht. 12 of 22 for P.P.C. I-Beam Notes.

SPAN #2 GIRDER DETAILS  
IL. ROUTE 336 OVER  
BURLINGTON NORTHERN  
SANTA FE RAILROAD  
F.A.P. ROUTE 315 SECT. 55-2  
MCDONOUGH COUNTY  
STATION 154+56.74  
STRUCTURE NO. 055-0052 (EB)  
STRUCTURE NO. 055-0053 (WB)

**STS CONSULTANTS**  
111 NE Jefferson Ave.  
Peoria, Illinois 61602  
Ph (309) 676-8464  
FAX (309) 676-5445  
IL Design Firm Reg. No. 184-001518