

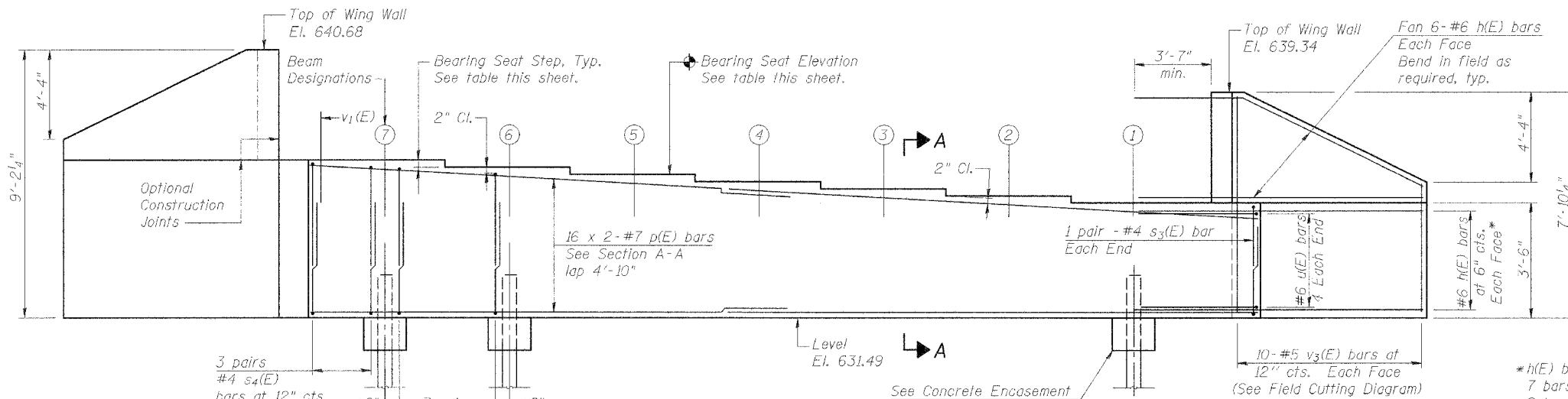
STATE OF ILLINOIS
DEPARTMENT OF TRANSPORTATION

ROUTE NO.	SECTION	COUNTY	TOTAL SHEETS	SHEET NO.
F.A.P. 315	55-2	MCDONOUGH	1025	490
FED. ROAD DIST. NO.	ILLINOIS	FED. AID PROJECT NO.		

Contract No. 68205

Notes:

- 1.) Pour steps monolithically with cap.
- 2.) Reinforcement bars designated (E) shall be epoxy coated.
- 3.) Bars indicated thus: 16 x 2-#7 etc. indicates 16 lines of bars with 2 lengths per line.
- 4.) Chamfer exposed edges $\frac{3}{4}$ "

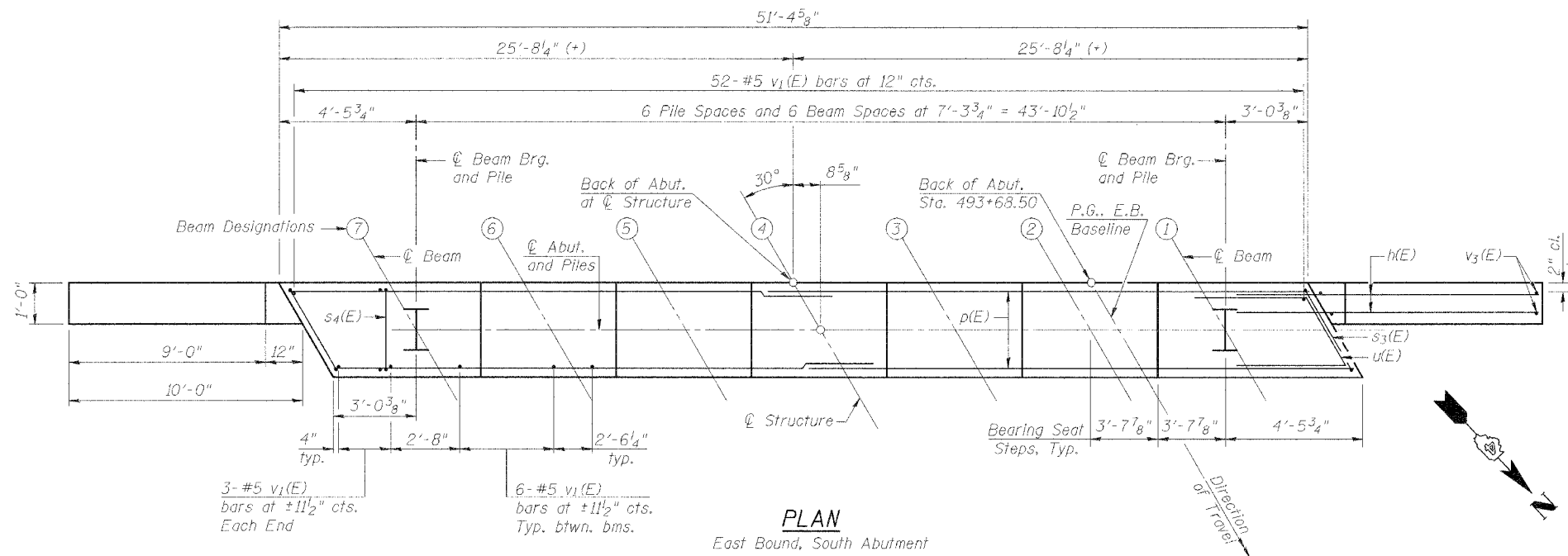


EAST WING WALL

WEST WING WALL

ELEVATION

(Looking opposite to direction of travel: Southerly)



PLAN

East Bound, South Abutment

BEARING SEATS

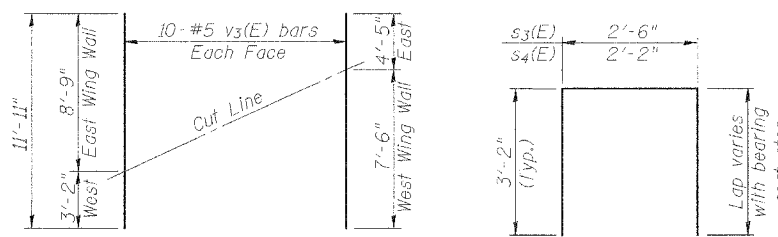
Beam	Elevation	Step Ht.
①	634.99	2 1/2"
②	635.20	2 3/8"
③	635.40	2 1/2"
④	635.61	2 1/2"
⑤	635.81	2 3/8"
⑥	636.02	2 1/2"
⑦	636.22	2 1/2"

PILE DATA

See this sheet for Pile Encasement Detail.

Type: HP 12 x 53
Capacity: Driven to Refusal
Number Required: 6 (+1 test pile)
Estimated Length: 50'

DESIGNED	PJL
CHECKED	LLV
DRAWN	MGM
CHECKED	PJL

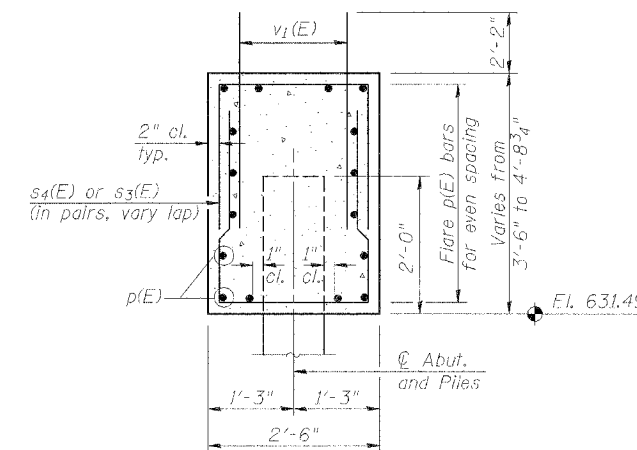


FIELD CUTTING DIAGRAM

Order v3(E) full length. Cut as shown and use remainder of bars in opposite wing wall.

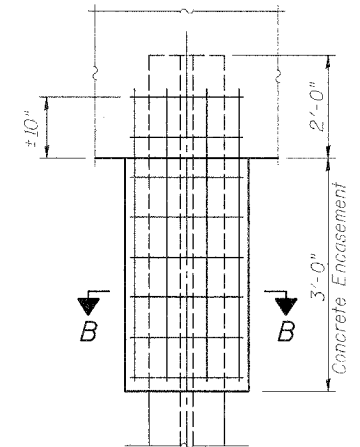
BARS s3(E) & s4(E)

(Used in pairs with variable lap)

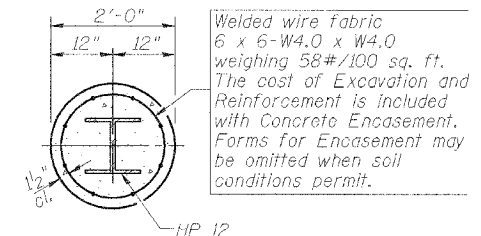


SECTION A-A

Note: #4 bar min. lap = 1'-8"



CONCRETE ENCASUREMENT DETAIL



SECTION B-B

BILL OF MATERIAL

Bar No.	Size	Length	Shape
h(E)	#6	13'-5"	—
p(E)	#7	28'-0"	—
s3(E)	#4	8'-10"	□
s4(E)	#4	8'-6"	□
u(E)	#6	9'-7"	—
v1(E)	#5	4'-4"	—
v3(E)	#5	11'-11"	—
Concrete Structures	Cu. Yd.	24.3	
Reinforcement Bars, Epoxy Coated	Pound	4,320	
Structure Excavation	Cu. Yd.	138	
Furnishing Steel Piles	Foot	300	
HP 12 x 53			
Driving Steel Piles	Foot	300	
Test Piles, HP 12 x 53	Each	1	
Concrete Encasement	Cu. Yd.	2.4	

SOUTH ABUTMENT DETAILS (EB)
IL. ROUTE 336 OVER
TRIBUTARY TO
KILLJORDAN CREEK
F.A.P. ROUTE 315 SECT. 55-2
MCDONOUGH COUNTY
STATION 494+75.00
STRUCTURE NO. 055-0060 (EB)

STS CONSULTANTS
111 NE Jefferson Ave.
Peoria, Illinois 61602
PH (309) 676-8464
FAX (309) 676-5445
IL Design Firm Reg. No. 184-001518