

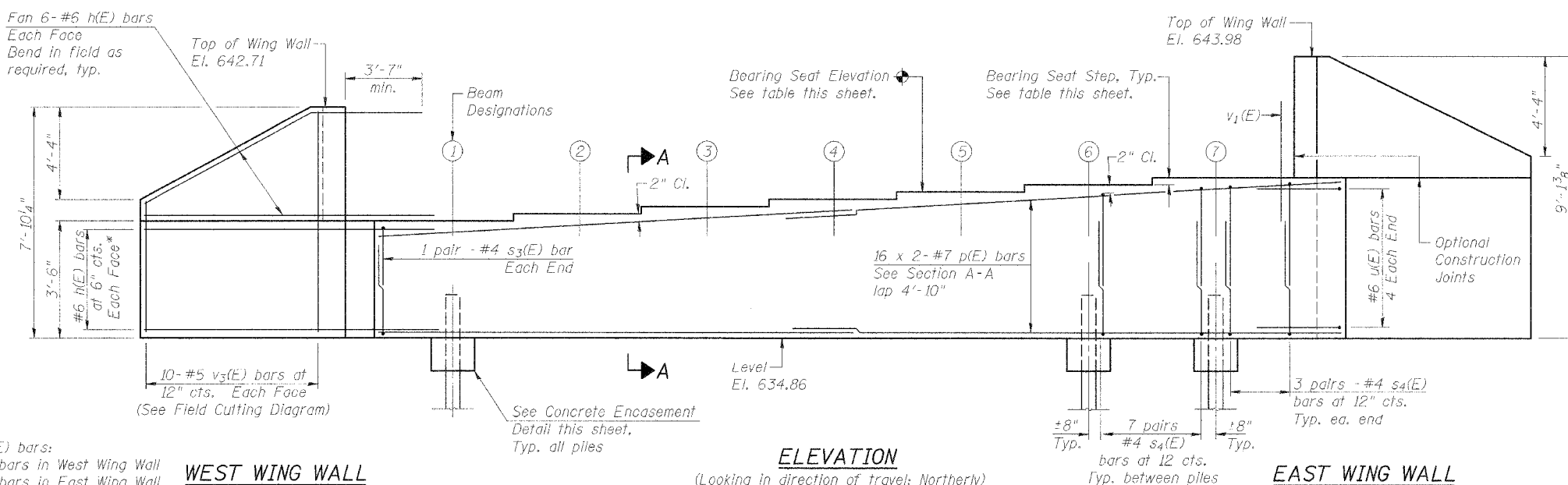
STATE OF ILLINOIS  
DEPARTMENT OF TRANSPORTATION

ROUTE NO.	SECTION	CONTRACT	DISTRICT	SHEET NO.	SHEET NO. 14 22 SHEETS
F.A.P. 315	55-2	MCDONOUGH	1025	492	
FED. ROAD DIST. NO.	PLAN NO.	FED. AID PROJECT			

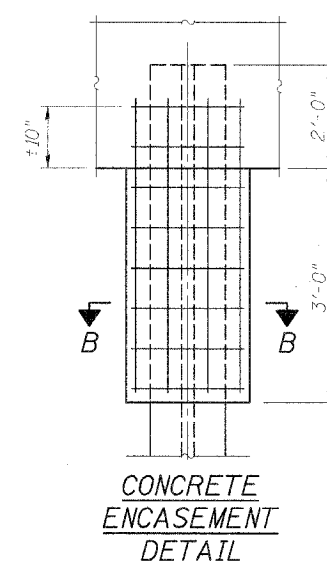
Contract No. 68205

Notes:

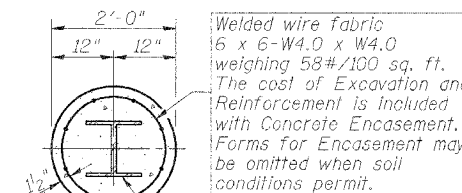
- 1.) Four steps monolithically with cap.
- 2.) Reinforcement bars designated (E) shall be epoxy coated.
- 3.) Bars indicated thus: 16 x 2-#7 etc. Indicates 16 lines of bars with 2 lengths per line.
- 4.) Chamfer exposed edges 3/4".



\*h(E) bars:  
7 bars in West Wing Wall  
9 bars in East Wing Wall



CONCRETE  
ENCASEMENT  
DETAIL



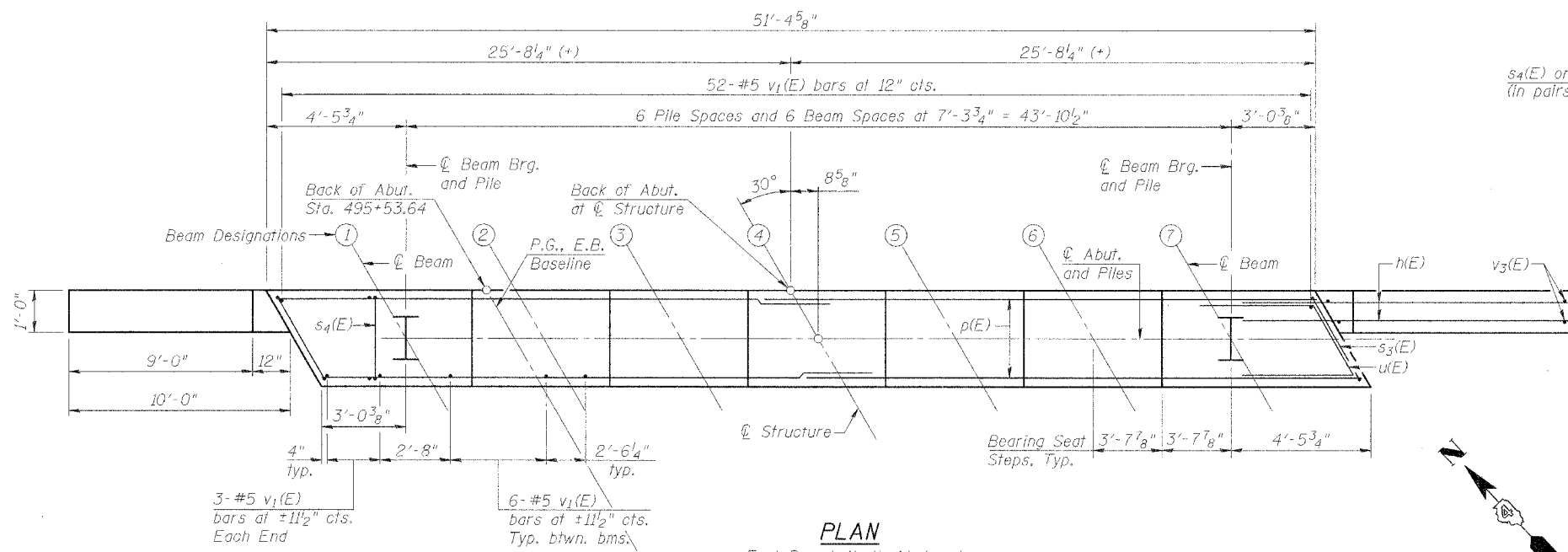
SECTION B-B

BILL OF MATERIAL

Bar	No.	Size	Length	Shape
h(E)	56	#6	13'-5"	—
p(E)	32	#7	28'-0"	—
s3(E)	4	#4	8'-10"	□
s4(E)	96	#4	8'-6"	□
u(E)	8	#6	9'-7"	△
v1(E)	94	#5	4'-4"	—
v3(E)	20	#5	11'-11"	—
Concrete Structures	Cu. Yd.		24.1	
Reinforcement Bars, Epoxy Coated	Pound		4,320	
Structure Excavation	Cu. Yd.		138	
Furnishing Steel Piles HP 12 x 53	Foot		270	
Driving Steel Piles	Foot		270	
Test Piles, HP 12 x 53	Each		1	
Concrete Encasement	Cu. Yd.		2.4	

NORTH ABUTMENT DETAILS (EB)  
IL. ROUTE 336 OVER  
TRIBUTARY TO  
KILLJORDAN CREEK  
F.A.P. ROUTE 315 SECT. 55-2  
MCDONOUGH COUNTY  
STATION 494+75.00  
STRUCTURE NO. 055-0060 (EB)

**STS CONSULTANTS**  
111 NE Jefferson Ave.  
Peoria, Illinois 61602  
Ph (309) 676-8464  
FAX (309) 676-5445  
IL Design Firm Reg. No. 184-001518



PLAN

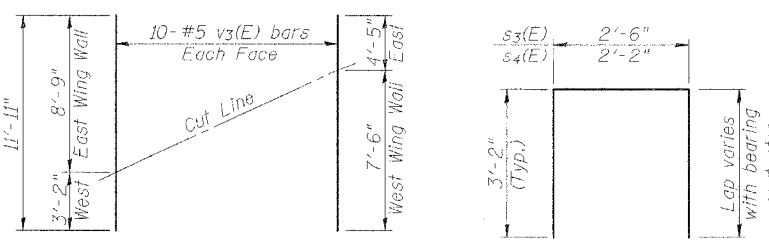
BEARING SEATS

Beam	Elevation	Step Ht.
①	638.36	2 1/4"
②	638.55	2 3/8"
③	638.75	2 1/4"
④	638.94	2 3/8"
⑤	639.13	2 3/8"
⑥	639.33	2 3/8"
⑦	639.52	2 1/4"

PILE DATA

See this sheet for  
Pile Encasement Detail.

Type: HP 12 x 53  
Capacity: Driven to Refusal  
Number Required: 6 (+1 test pile)  
Estimated Length: 45'



FIELD CUTTING DIAGRAM

Order v3(E) full length. Cut as shown and  
use remainder of bars in opposite wing wall.

BARS s3(E) & s4(E)

(Used in pairs with variable lap)

BAR u(E)

DESIGNED	PJL
CHECKED	LLV
DRAWN	MGM
CHECKED	PJL