

Notes:

- 1.) Space Reinforcement in cap to miss piles and anchor bolts.
- 2.) Pour steps monolithically with cap.
- 3.) Min. laps: #6 bar 3'-7", #7 bar 4'-10", #5 bar 2'-2"
- 4.) Bars indicated thus: 16 x 2-#7 etc. indicates 16 lines of bars with 2 lengths per line.
- 5.) Chamfer exposed edges 3/4".

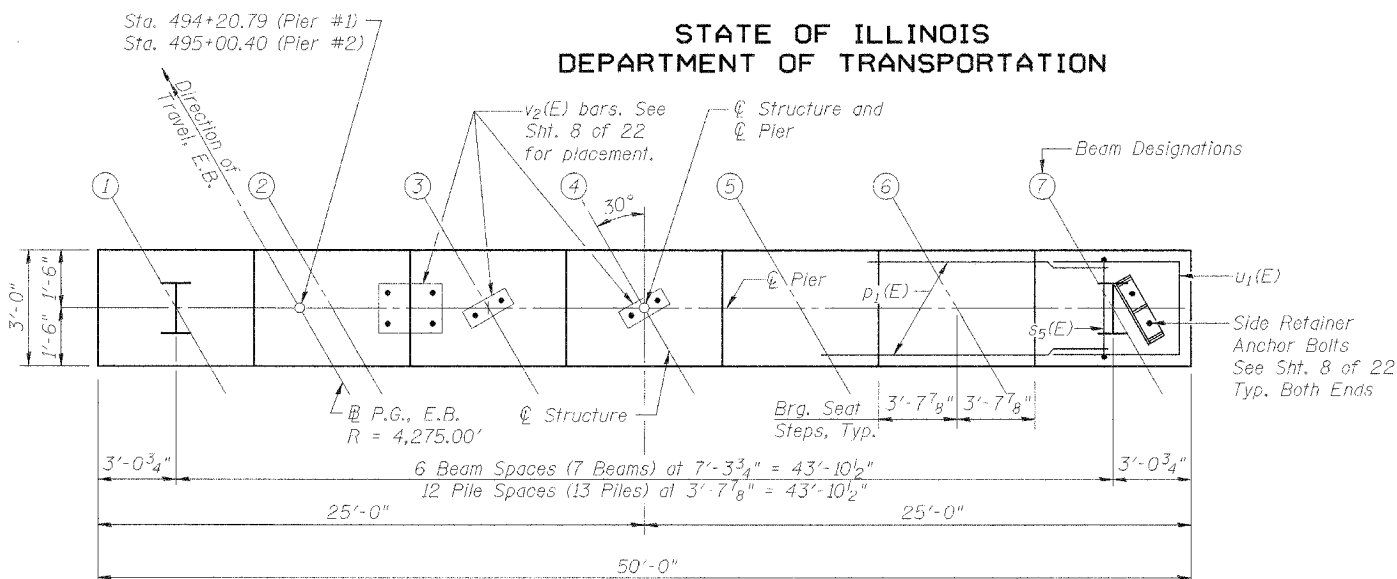
STATE OF ILLINOIS  
DEPARTMENT OF TRANSPORTATION

ROUTE NO.	SECTION	COUNTY	TOTAL SHEETS	SHEET NO.
F.A.P. 315	55-2	MCDONOUGH	1025	494
FED. ROAD DIST. NO. 4	ILLINOIS	FED. AID PROJECT-		

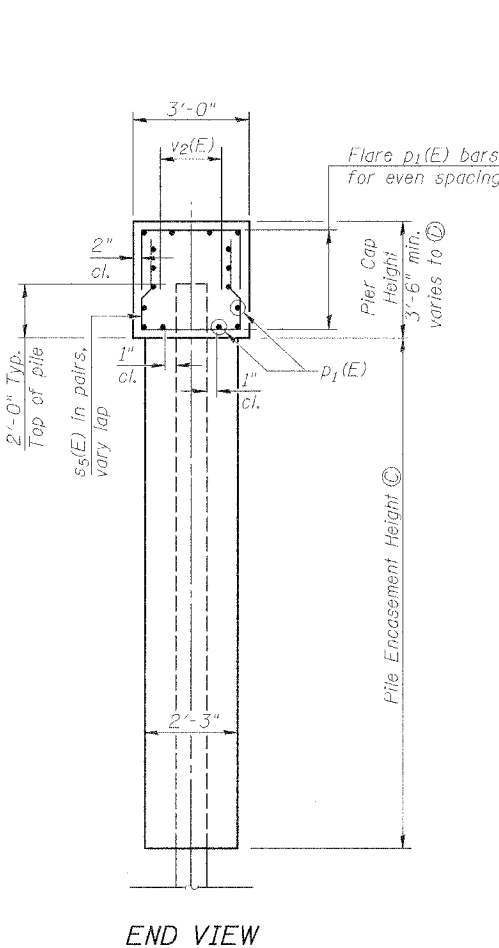
Contract No. 68205

BEARING SEATS

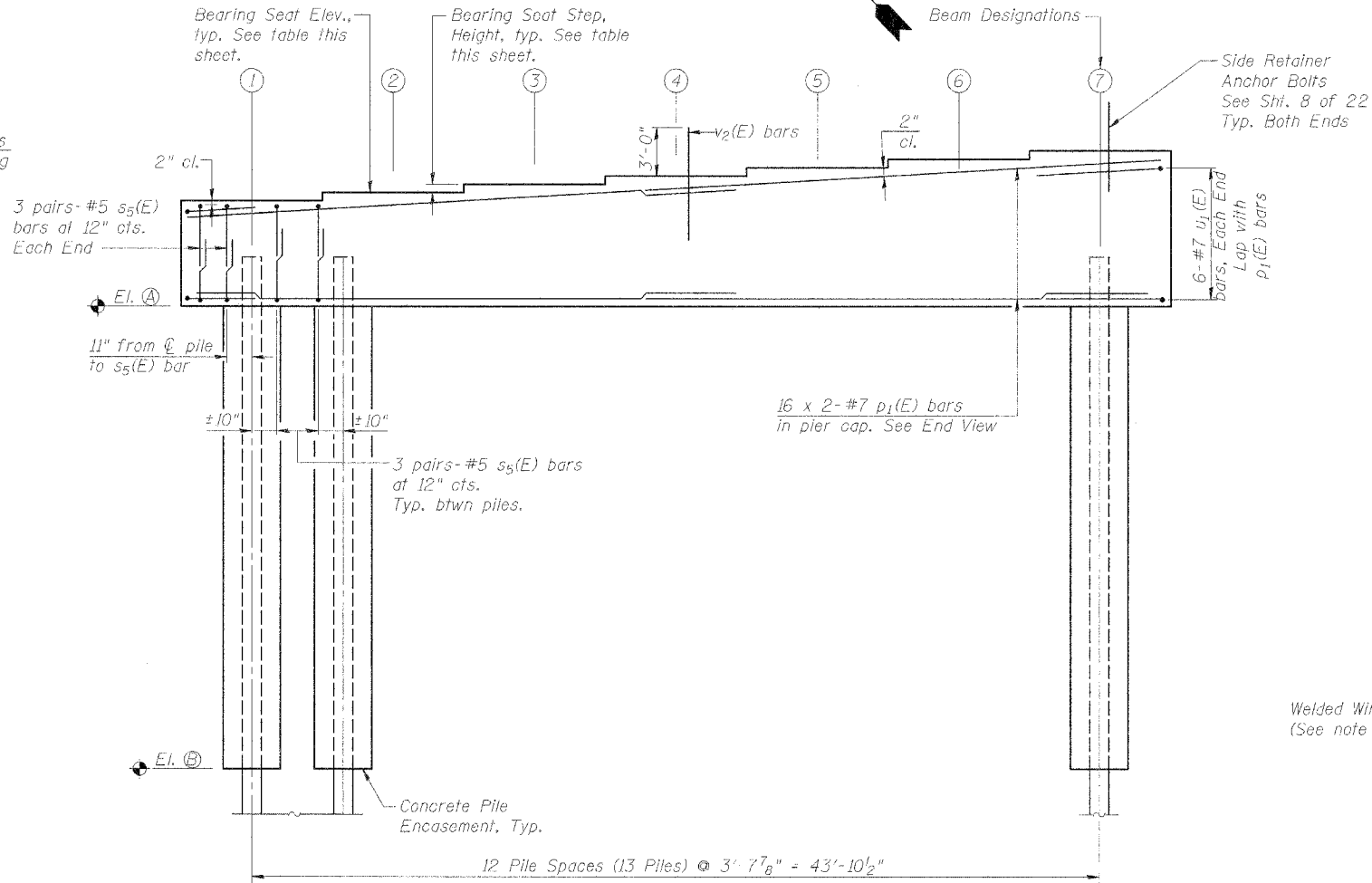
Beam	Pier #1		Pier #2	
	Elevation	Step Ht.	Elevation	Step Ht.
①	635.91	2 3/8"	637.38	2 3/8"
②	636.11	2 3/8"	637.57	2 3/8"
③	636.31	2 1/2"	637.77	2 3/8"
④	636.51	2 3/8"	637.97	2 1/4"
⑤	636.71	2 1/2"	638.16	2 3/8"
⑥	636.92	2 3/8"	638.36	2 3/8"
⑦	637.12	2 3/8"	638.56	2 3/8"



TOP PLAN

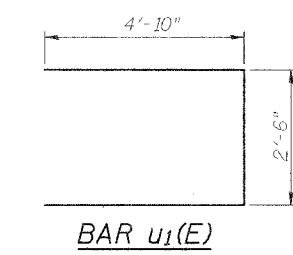


END VIEW

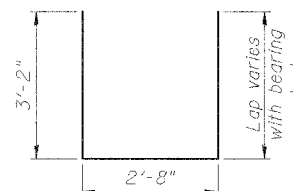


ELEVATION

(Looking in direction of travel, Northerly)

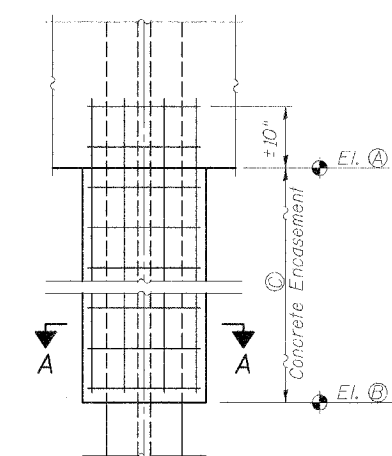


BAR u1(E)

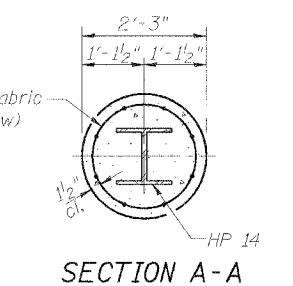


BAR s5(E)

Used in pairs with variable lap



CONCRETE ENCASUREMENT DETAIL



SECTION A-A

Note:  
Welded wire fabric 6 x 6-W4.0 x W4.0 weighing 58#/100 sq. ft. The cost of Excavation and Reinforcement is included with Concrete Encasement. Forms for Encasement are required full height.

PIER ELEVATIONS & DIMENSIONS

Location	Pier #1	Pier #2
(A) Bottom of Cap El.	632.41	633.88
(B) Bottom of Pile Encasement El.	605.00	605.00
(C) Pile Encasement Height	27'-5"	28'-10 5/8"
(D) Pier Cap Max Height	4'-8 1/2"	4'-8 1/8"

BILL OF MATERIAL

(Two Piers)

Bar No.	Size	Length	Shape
p1(E)	#7	27'-3"	—
s5(E)	#5	9'-0"	U
u1(E)	#7	12'-2"	—
v2(E)	#8	6'-0"	—
Concrete Structures	Cu. Yd.	44.5	
Reinforcement Bars, Epoxy Coated	Pound	6,890	
Concrete Encasement	Cu. Yd.	107.8	
Furnishing Steel Piles	Foot	1,140	
HP 14 x 73	Foot	1,140	
Driving Steel Piles	Foot	1,140	
Test Piles, HP 14 x 73	Each	2	
Pier 1 Underwater Structure	Each	1	
Excavation Protection, Location 1	Each	1	
Pier 2 Underwater Structure	Each	1	
Excavation Protection, Location 2	Each	1	

PILE DATA

Type:	HP 14 x 73, AASHTO M270, Grade 50 Steel	
Capacity:	Driven to Refusal	
Location	No. of Piles	Est. Length
Pier #1	12 (+1 test pile)	51'
Pier #2	12 (+1 test pile)	44'

Note: Steel type required for Pier Piles.

PIER DETAILS (EB)  
IL. ROUTE 336 OVER  
TRIBUTARY TO  
KILLJORDAN CREEK  
F.A.P. ROUTE 315 SECT. 55-2  
MCDONOUGH COUNTY  
STATION 494+75.00  
STRUCTURE NO. 055-0060 (EB)

DESIGNED	PJL
CHECKED	LLV
DRAWN	MGM
CHECKED	PJL

**STS CONSULTANTS**  
111 NE Jefferson Ave.  
Peoria, Illinois 61602  
Ph (309) 676-8464  
FAX (309) 676-5445  
IL Design Firm Reg. No. 184-001518