

- Notes:
- 1.) Space Reinforcement in cap to miss piles and anchor bolts.
 - 2.) Pour steps monolithically with cap.
 - 3.) Min. laps: #6 bar 3'-7", #7 bar 4'-10", #5 bar 2'-2".
 - 4.) Bars indicated thus: 16 x 2-#7 etc. indicates 16 lines of bars with 2 lengths per line.
 - 5.) Chamfer exposed edges 3/4".

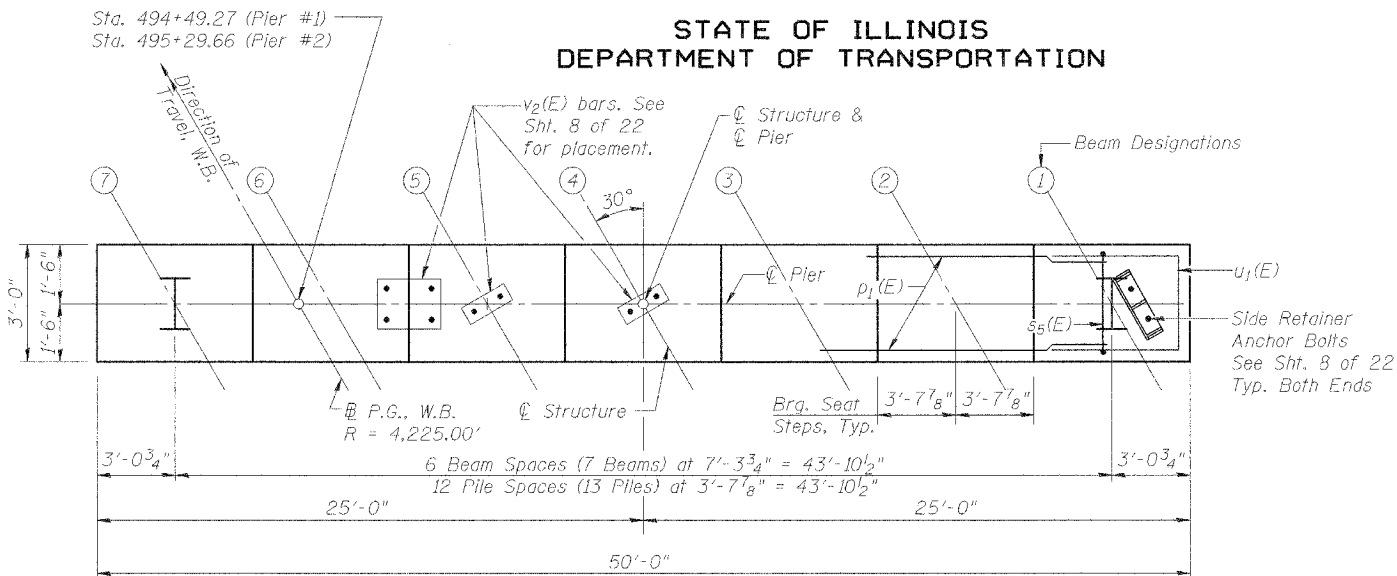
STATE OF ILLINOIS
DEPARTMENT OF TRANSPORTATION

ROUTE NO.	SECTION	COUNTY	DATE	SHEET NO.	SHEET NO. 17 22 SHEETS
F.A.P. 315	55-2	MCDONOUGH	1025	495	
FED. ROAD DIST. NO.		ILLINOIS	FED. AID PROJECT		

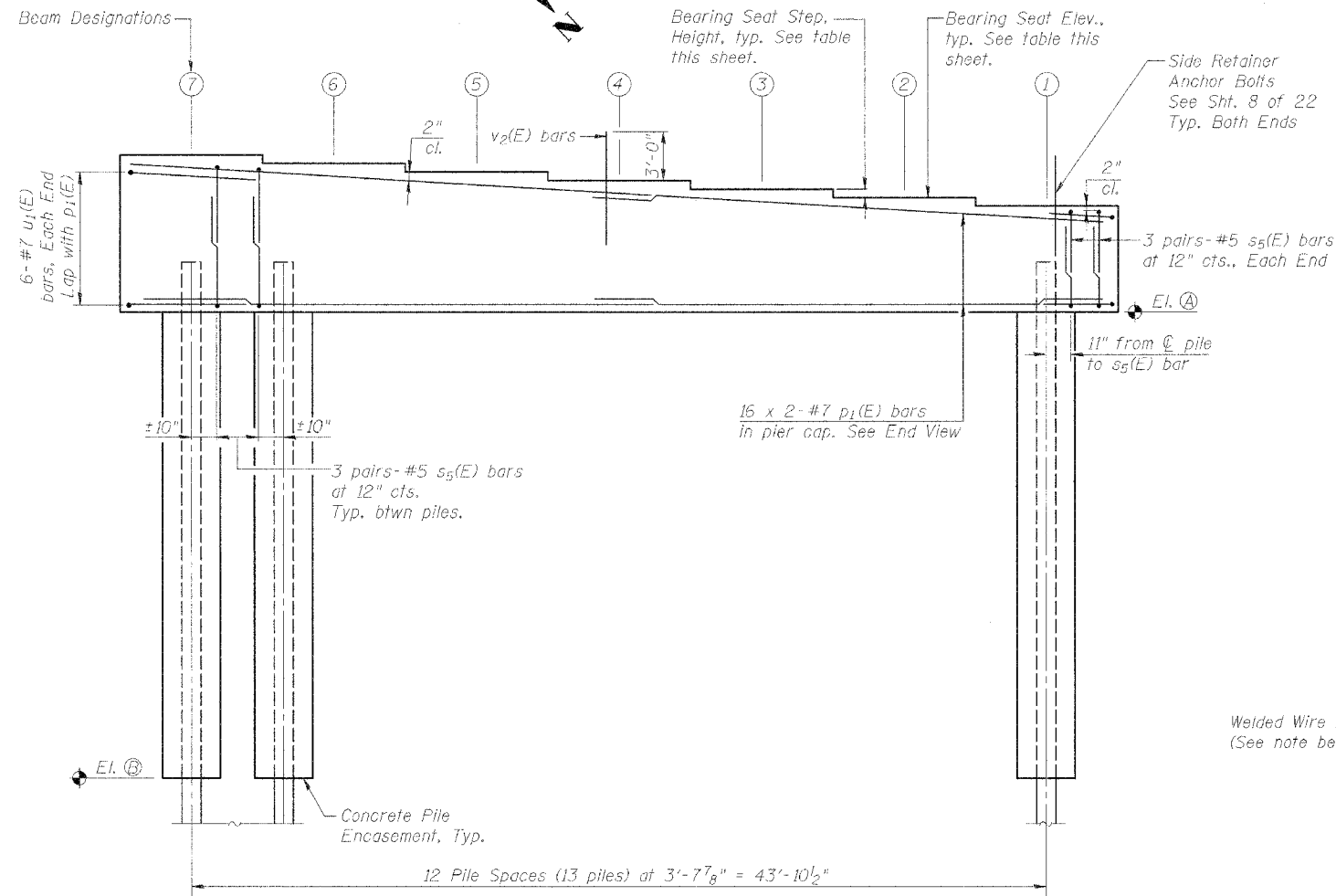
Contract No. 68205

BEARING SEATS

Beam	Pier #1		Pier #2	
	Elevation	Step Ht.	Elevation	Step Ht.
①	635.55	2 3/8"	637.05	2 1/4"
②	635.75	2 3/8"	637.24	2 3/8"
③	635.95	2 3/8"	637.44	2 3/8"
④	636.15	2 3/8"	637.63	2 3/8"
⑤	636.35	2 3/8"	637.83	2 1/4"
⑥	636.55	2 3/8"	638.02	2 3/8"
⑦	636.75	2 1/2"	638.22	2 3/8"

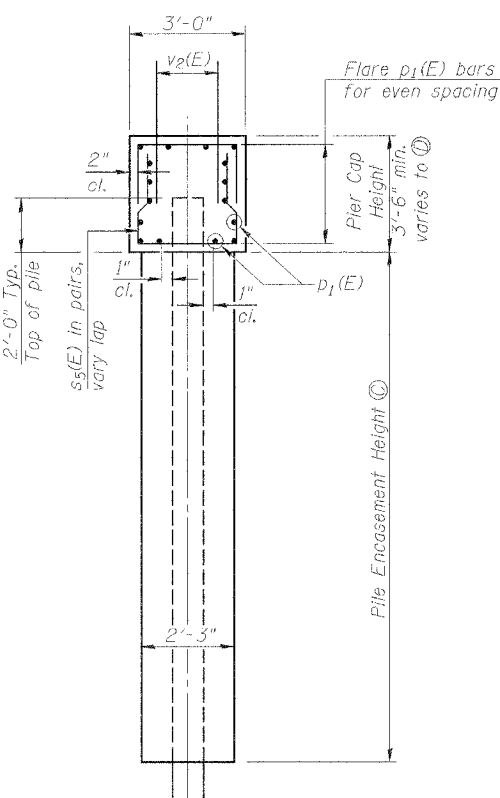


TOP PLAN



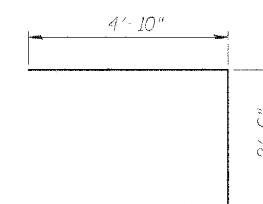
ELEVATION

(Looking in direction of travel, Southerly)

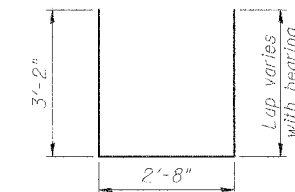


END VIEW

DESIGNED	PJL
CHECKED	LLV
DRAWN	MGM
CHECKED	PJL

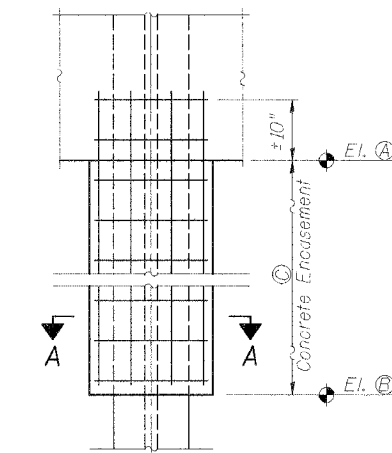


BAR u₁(E)

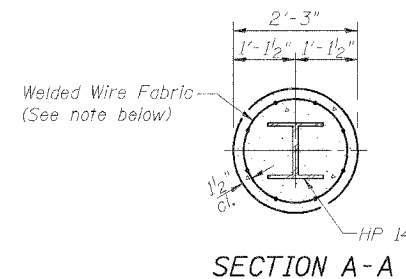


BAR s₅(E)

Used in pairs with variable lap



CONCRETE ENCASEMENT DETAIL



SECTION A-A

Note:
Welded wire fabric 6 x 6-W4.0 x W4.0 weighing 58#/100 sq. ft. The cost of Excavation and Reinforcement is included with Concrete Encasement. Forms for Encasement are required full height.

PIER ELEVATIONS & DIMENSIONS

	Location	Pier #1	Pier #2
Ⓐ	Bottom of Cap Elev.	632.05	633.55
Ⓑ	Bottom of Pile Encasement El.	605.00	605.00
Ⓒ	Pile Encasement Height	27'-0 5/8"	28'-6 5/8"
Ⓓ	Pier Cap Max Height	4'-8 3/8"	4'-8"

BILL OF MATERIAL (Two Piers)

Bar	No.	Size	Length	Shape
p ₁ (E)	64	#7	27'-3"	—
s ₅ (E)	168	#5	9'-0"	⌊
u ₁ (E)	24	#7	12'-2"	⌊
v ₂ (E)	72	#8	6'-0"	—
Concrete Structures		Cu. Yd.	45.5	
Reinforcement Bars, Epoxy Coated		Pound	6,890	
Concrete Encasement		Cu. Yd.	106.5	
Furnishing Steel Piles HP 14 x 73		Foot	1,248	
Driving Steel Piles		Foot	1,248	
Test Piles, HP 14 x 73		Each	2	
Pier 1				
Underwater Structure		Each	1	
Excavation Protection, Location 3				
Pier 2				
Underwater Structure		Each	1	
Excavation Protection, Location 4				

PILE DATA

Type: HP 14 x 73, AASHTO M270, Grade 50 Steel
Capacity: Driven to Refusal

Location	No. of Piles	Est. Length
Pier #1 (+1 test pile)	12	50'
Pier #2 (+1 test pile)	12	54'

Note: Steel type required for Pier Piles.

PIER DETAILS (WB)
IL. ROUTE 336 OVER
TRIBUTARY TO
KILLJORDAN CREEK
F.A.P. ROUTE 315 SECT. 55-2
MCDONOUGH COUNTY
STATION 494+75.00
STRUCTURE NO. 055-0061 (WB)

STS CONSULTANTS
11 NE Jefferson Ave.
Peoria, Illinois 61602
Ph(309)676-8464
FAX(309)676-5445
IL Design Firm Reg. No. 184-001518

S17:055-0061_S1.dgn 3/20/2005 10:02:26 AM