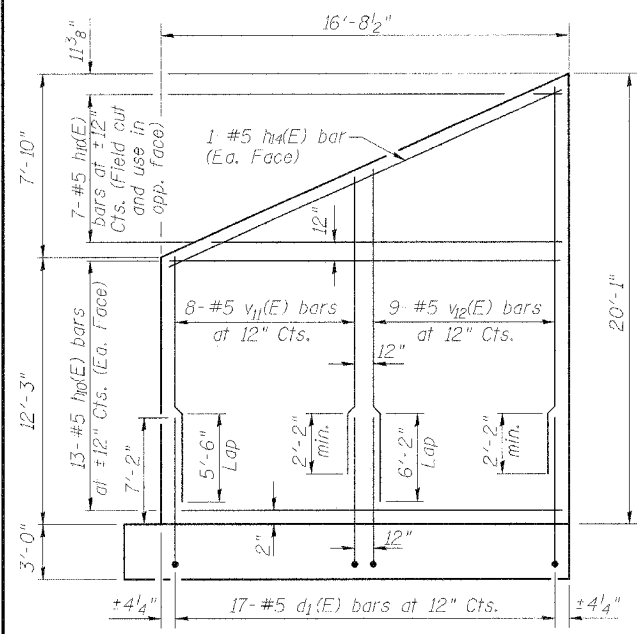


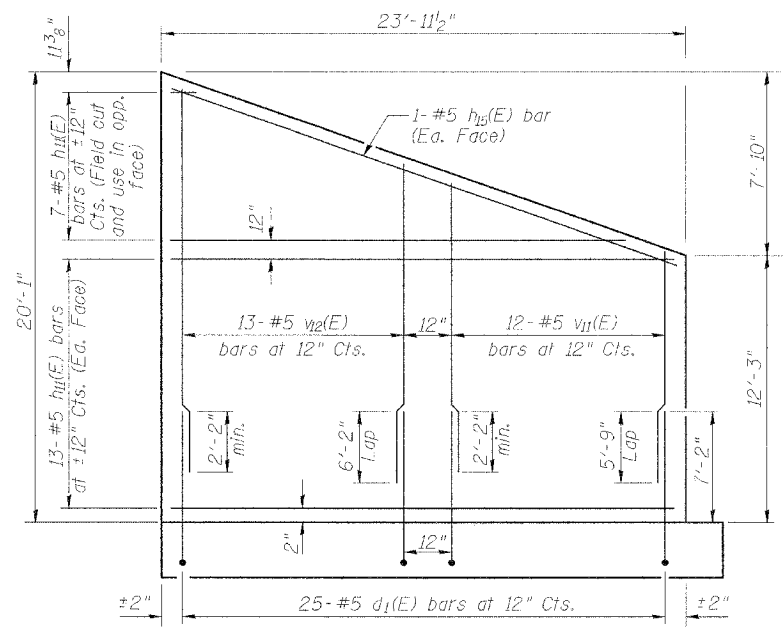
STATE OF ILLINOIS  
DEPARTMENT OF TRANSPORTATION

ROUTE NO.	SECTION	COUNTY	DATE	SHEET	SHEET NO.
F.A.P. 315	55-2	McDONOUGH	10/25	512	16
FED. ROAD DIST. NO. 4		ILLINOIS	FED. AID PROJECT		

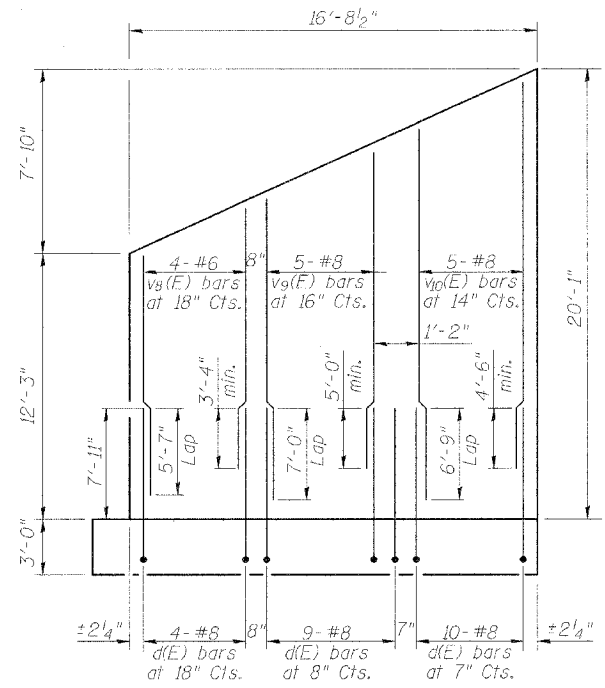
Contract # 68205



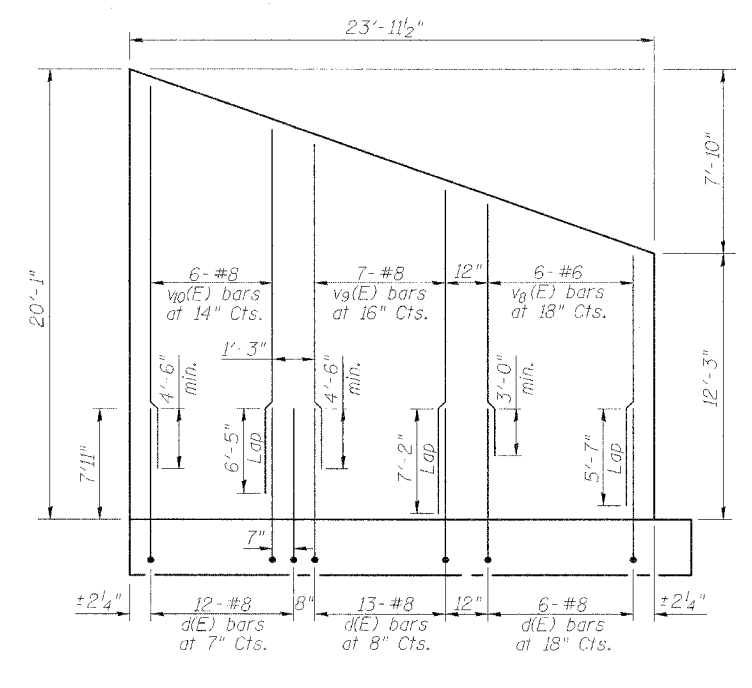
**EAST ABUTMENT WING WALL (NORTH)**  
(Showing Front Face Reinforcement)



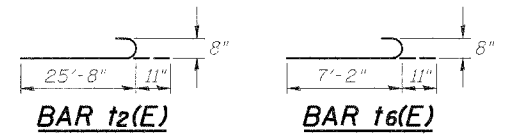
**EAST ABUTMENT WING WALL (SOUTH)**  
(Showing Front Face Reinforcement)



**EAST ABUTMENT WING WALL (NORTH)**  
(Showing Back Face Reinforcement)

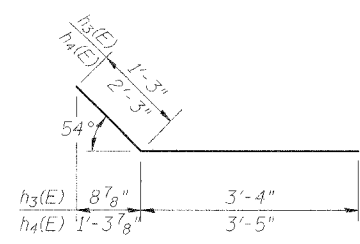


**EAST ABUTMENT WING WALL (SOUTH)**  
(Showing Back Face Reinforcement)

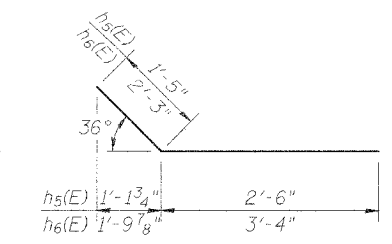


DESIGNED	PJL
CHECKED	WDL
DRAWN	MGM
CHECKED	PJL

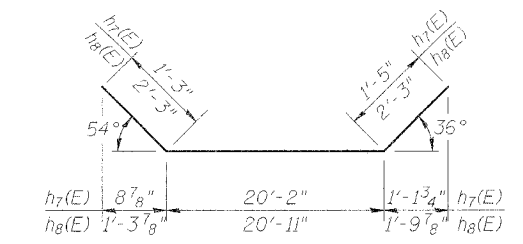
**BARS s1(E) and s2(E)**



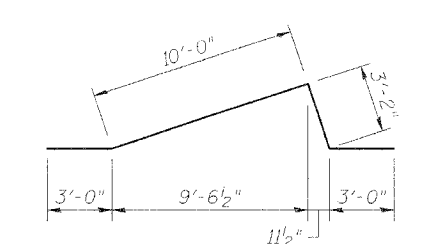
**BARS h3(E) and h4(E)**



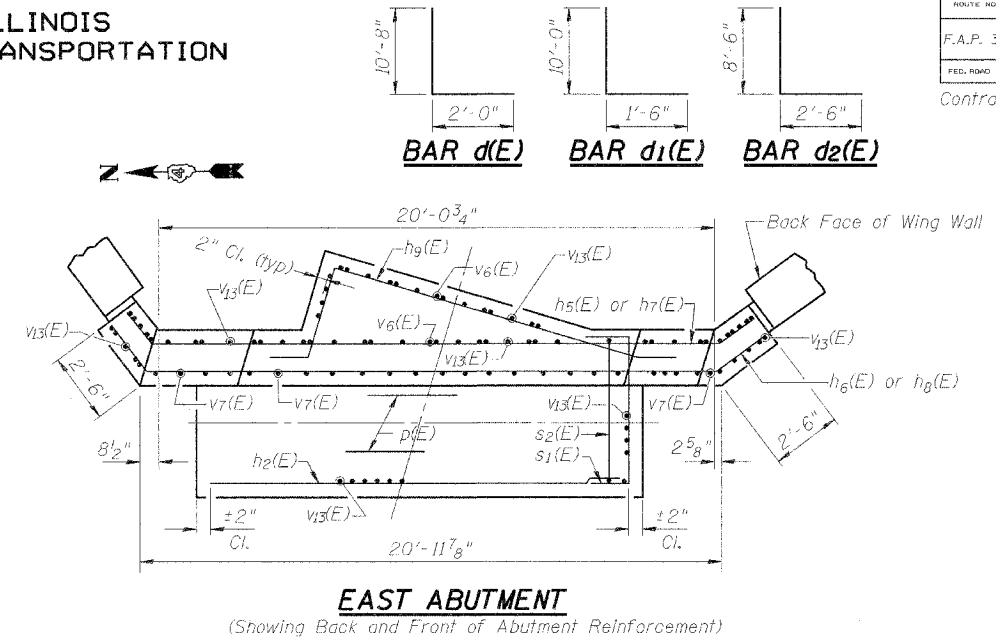
**BARS h5(E) and h6(E)**



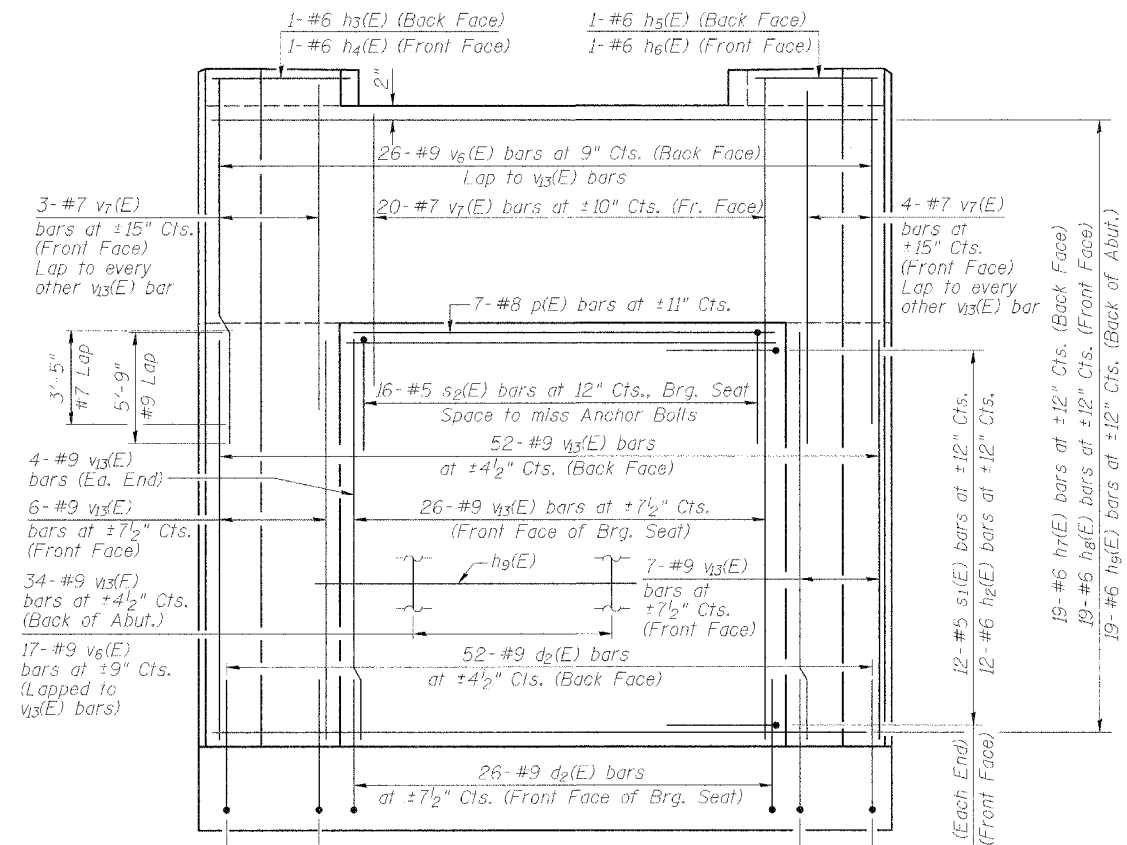
**BARS h7(E) and h8(E)**



**BAR h9(E)**



**EAST ABUTMENT**  
(Showing Back and Front of Abutment Reinforcement)



**EAST ABUTMENT**  
(Showing Back and Front of Abutment Reinforcement)

**ABUTMENT BILL OF MATERIAL**

Bar	No.	Size	Length	Shape
d(E)	54	#8	12'-8"	L
d1(E)	42	#5	11'-6"	L
d2(E)	91	#9	11'-0"	L
h2(E)	12	#6	15'-8"	L
h3(E)	1	#6	4'-7"	L
h4(E)	1	#6	5'-8"	L
h5(E)	1	#6	3'-11"	L
h6(E)	1	#6	5'-7"	L
h7(E)	19	#6	22'-10"	L
h8(E)	19	#6	25'-5"	L
h9(E)	19	#6	19'-2"	L
h10(E)	33	#5	16'-4"	L
h11(E)	33	#5	23'-8"	L
h12(E)	2	#5	18'-1"	L
h13(E)	2	#5	24'-10"	L
p(E)	7	#8	15'-8"	L
s1(E)	24	#5	10'-8"	L
s2(E)	16	#5	10'-7"	L
t2(E)	28	#8	26'-7"	L
t4(E)	25	#8	25'-8"	L
t5(E)	48	#8	16'-6"	L
t6(E)	8	#8	8'-1"	L
t11(E)	8	#8	25'-10"	L
t12(E)	13	#8	23'-4"	L
t13(E)	16	#8	26'-10"	L
t14(E)	11	#8	24'-10"	L
v6(E)	43	#9	14'-10"	L
v7(E)	27	#7	12'-7"	L
v8(E)	10	#6	9'-9"	L
v9(E)	12	#8	14'-2"	L
v10(E)	11	#8	16'-6"	L
v11(E)	20	#5	10'-8"	L
v12(E)	22	#5	15'-0"	L
v13(E)	133	#9	10'-10"	L
w1(E)	61	#8	24'-2"	L
w2(E)	8	#8	39'-0"	L
w3(E)	8	#8	16'-0"	L
w6(E)	8	#8	57'-6"	L
w7(E)	8	#8	28'-0"	L

Concrete Structures	Cu. Yd.	228.7
Reinforcement Bars, Epoxy Coated	Pound	35,740
Structure Excavation	Cu. Yd.	1,167
Furnishing Steel Piles HP 14 x 73	Foot	2,538
Driving Steel Piles	Foot	2,538
Test Piles HP 14 x 73	Each	1
Metal Shoes	Each	47

Reinforcement bars designated (E) shall be epoxy coated

**EAST ABUTMENT AND WING WALL REINFORCEMENT BURLINGTON NORTHERN SANTA FE RAILROAD OVER RAMP I**  
F.A.P. ROUTE 315 SECT. 55-2  
McDONOUGH COUNTY  
STATION 21+61.48  
STRUCTURE NO. 055-9902  
B.N.S.F. LINE SEGMENT 0011  
B.N.S.F. BRIDGE NO. 206.13

**STS CONSULTANTS**  
111 NE Jefferson Ave.  
Peoria, Illinois 61602  
Ph (309) 676-8464  
FAX (309) 676-5445  
IL Design Firm Reg. No. 224-001522