

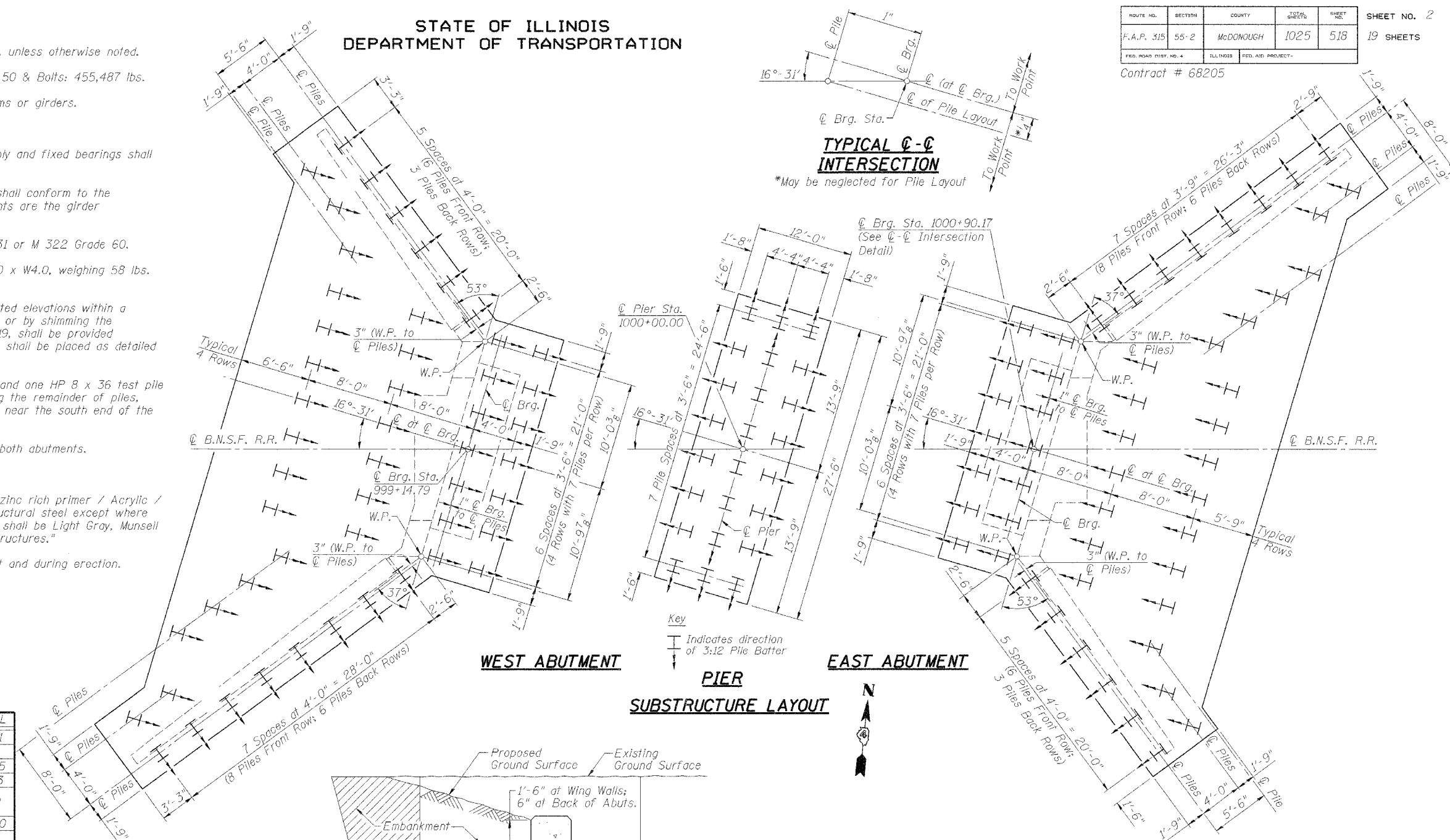
**GENERAL NOTES**

- Fasteners shall be high strength bolts. Bolts 7/8" φ, open holes 15/16" φ, unless otherwise noted.
- Calculated weight of Structural Steel = Grade 36: 115,304 lbs.; Grade 50 & Bolts: 455,487 lbs.
- Field welding of construction accessories will not be permitted to beams or girders.
- Anchor bolts shall be set before bolting diaphragms over supports.
- The structural steel bearing plates of the Elastomeric Bearing Assembly and fixed bearings shall conform to the requirements of AASHTO M 270 Grade 50.
- The main load carrying member components subject to tensile stress shall conform to the Supplemental Requirements for Notch Toughness Zone 2. These components are the girder tension flanges and webs, noted "N.T.R." on Sht. 5 and 6 of 19.
- Reinforcement bars shall conform to the requirements of AASHTO M 31 or M 322 Grade 60.
- Slope wall shall be reinforced with welded wire fabric, 6" x 6" - W4.0 x W4.0, weighing 58 lbs. per 100 sq. ft.
- Bearing seat surfaces shall be constructed or adjusted to the designated elevations within a tolerance of 1/8". Adjustment shall be made either by grinding the surface or by shimming the bearing. Two 3/8" adjusting shims, of the dimensions shown on Sht. 7 of 19, shall be provided for each bearing in addition to all other plates or shims. Adjusting shims shall be placed as detailed on Sht. 7 of 19.
- The Contractor shall drive three HP 14 x 73 test piles at abutments and one HP 8 x 36 test pile at pier in permanent locations as directed by the Engineer before ordering the remainder of piles, thus: 2 at the West Abutment (1 near the north end of the wingwall and 1 near the south end of the wingwall); 1 at the pier and 1 at the East Abutment.
- Bridge Seat Sealer shall be applied to the seat area of the pier and both abutments.
- All Construction joints shall be bonded.
- Painting new steel as part of F & E structural steel: The Inorganic zinc rich primer / Acrylic / Acrylic Paint System shall be used for shop and field painting of new structural steel except where otherwise noted. The color of the final finish coat for all steel surfaces shall be Light Gray, Munsell No. 10Y 7/1. See special provision for "Cleaning and Painting New Metal Structures."
- The contractor is to ensure stability of plate girders during transport and during erection.

STATE OF ILLINOIS  
DEPARTMENT OF TRANSPORTATION

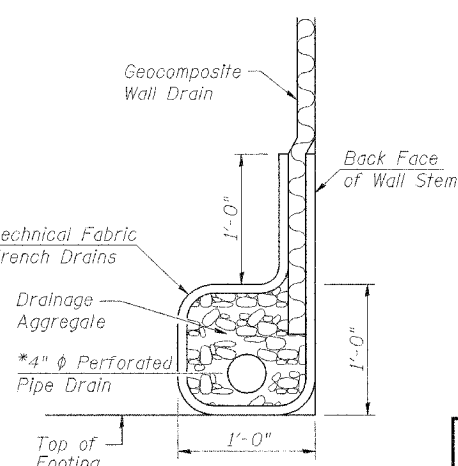
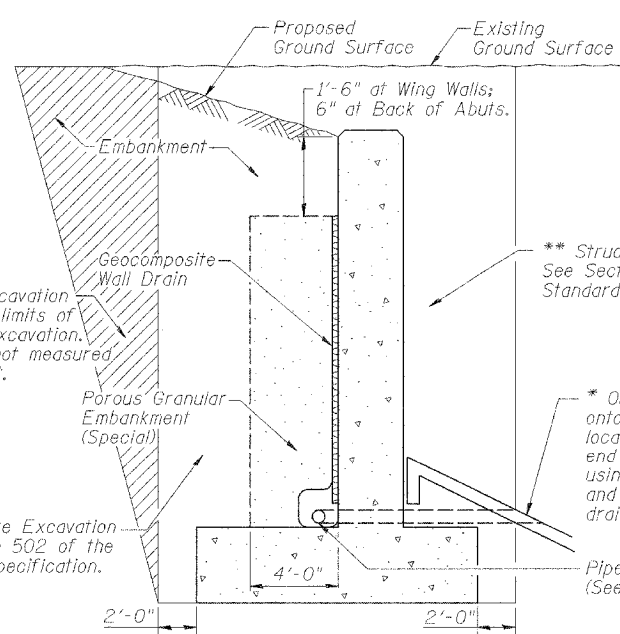
ROUTE NO.	SECTION	COUNTY	DATE	SHEET NO.	SHEET NO. 2
F.A.P. 315	55-2	MCDONOUGH	1025	518	19 SHEETS
FED. ROAD DIST. NO. 4	ILLINOIS	FED. AID PROJECT			

Contract # 68205



**TOTAL BILL OF MATERIAL**

ITEM	UNIT	SUPER	SUB	TOTAL
Structure Excavation	Cu. Yd.		3,091	3,091
Ballast Drains	Foot	549		549
Concrete Structures	Cu. Yd.		640.5	640.5
Membrane Waterproofing (Special)	Sq. Ft.	2,913		2,913
Furnishing and Erecting Structural Steel	L. Sum	0.42		0.42
Reinforcement Bars, Epoxy Coated	Pound		106,110	106,110
Test Pile Steel HP 14 x 73	Each		3	3
Furnishing Steel Piles HP 14 x 73	Foot		5,251	5,251
Test Pile Steel HP 8 x 36	Each		1	1
Furnishing Steel Piles HP 8 x 36	Foot		1,725	1,725
Driving Steel Piles	Foot		6,976	6,976
Elastomeric Bearing Assembly Type I (Special)	Each	10		10
Name Plates	Each		1	1
Slopedwall 4 Inch	Sq. Yd.		130.4	130.4
Porous Granular Embankment (Special)	Cu. Yd.		390	390
Pipe Handrail, Special	Foot	355		355
Bridge Seat Sealer	Sq. Ft.		213	213
Metal Shoes	Each		122	122
Geocomposite Wall Drain	Sq. Yd.		322	322
Pipe Underdrains for Structures, 4"	Foot		196	196



**TYPICAL SECTION THRU ABUTMENT AND WING WALLS WITH PIPE UNDERDRAIN OUTLET**

**PIPE UNDERDRAIN DETAIL**

**TOTAL BILL OF MATERIAL, GENERAL NOTES, & SUBSTRUCTURE LAYOUT**  
**BURLINGTON NORTHERN SANTA FE RAILROAD OVER IL. ROUTE 336**  
 F.A.P. ROUTE 315 SECT. 55-2  
 MCDONOUGH COUNTY  
 STATION 554+41.87  
 STRUCTURE NO. 055-9901  
 B.N.S.F. LINE SEGMENT 0011  
 B.N.S.F. BRIDGE NO. 206.04

**STS CONSULTANTS**  
 111 NE Jefferson Ave.  
 Peoria, Illinois 61602  
 Ph (309) 676-8464  
 FAX (309) 676-5445  
 IL Design Firm Reg. No. 224-001522

DESIGNED P.J.L
CHECKED W.D.L
DRAWN M.G.M
CHECKED P.J.L

\* Included in the cost of "Pipe Underdrains for Structures"  
 \*\* Backfill remainder of structure excavation and over excavation with same material specified for roadway embankment in accordance with Section 205 of the Standard Specifications.

\*\* Over excavation beyond the limits of structure excavation. This area not measured for payment.  
 \*\* Structure Excavation See Section 502 of the Standard Specification.  
 \*\* Structure Excavation See Section 502 of the Standard Specification.