

STATE OF ILLINOIS
DEPARTMENT OF TRANSPORTATION

ROUTE NO.	SECTION	COUNTY	DISTRICT	SHEET NO.
F.A.P. 315	55-2	McDONOUGH	1025	526
FED. ROAD DIST. NO.		ILLINOIS	FED. AID PROJECT	

Contract # 68205

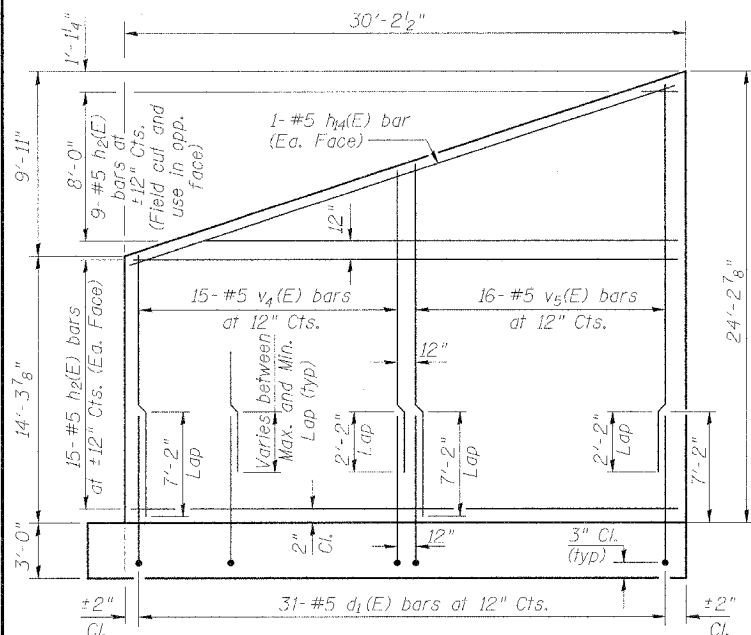
ABUTMENT BILL OF MATERIAL

Bar No.	Size	Length	Shape
d(E)	#8	12'-8"	L
d ₁ (E)	#5	11'-6"	L
d ₂ (E)	#9	11'-0"	L
h ₂ (E)	#5	29'-10"	—
h ₃ (E)	#5	21'-10"	—
h ₄ (E)	#6	15'-8"	—
h ₅ (E)	#6	3'-11"	—
h ₆ (E)	#6	5'-7"	—
h ₇ (E)	#6	4'-7"	—
h ₈ (E)	#6	5'-8"	—
h ₉ (E)	#6	22'-8"	—
h ₁₀ (E)	#6	25'-3"	—
h ₁₁ (E)	#6	19'-1"	—
h ₁₂ (E)	#5	31'-5"	—
h ₁₃ (E)	#5	23'-11"	—
p(E)	#8	15'-8"	—
s ₁ (E)	#5	10'-8"	—
s ₂ (E)	#5	10'-7"	—
t ₁ (E)	#8	28'-10"	—
t ₂ (E)	#8	27'-11"	—
t ₃ (E)	#8	16'-6"	—
t ₄ (E)	#8	8'-1"	—
t ₅ (E)	#8	29'-10"	—
t ₆ (E)	#8	26'-10"	—
t ₇ (E)	#8	23'-10"	—
t ₈ (E)	#8	21'-10"	—
t ₉ (E)	#8	12'-9"	—
t ₁₀ (E)	#8	17'-5"	—
v ₁ (E)	#6	20'-8"	—
v ₂ (E)	#8	14'-2"	—
v ₃ (E)	#5	19'-1"	—
v ₄ (E)	#5	15'-0"	—
v ₅ (E)	#9	14'-9"	—
v ₆ (E)	#9	12'-6"	—
v ₇ (E)	#9	24'-2"	—
v ₈ (E)	#7	37'-0"	—
w ₁ (E)	#8	35'-0"	—
w ₂ (E)	#8	47'-6"	—
w ₃ (E)	#8	23'-0"	—
w ₄ (E)	#8	23'-0"	—
w ₅ (E)	#8	23'-0"	—

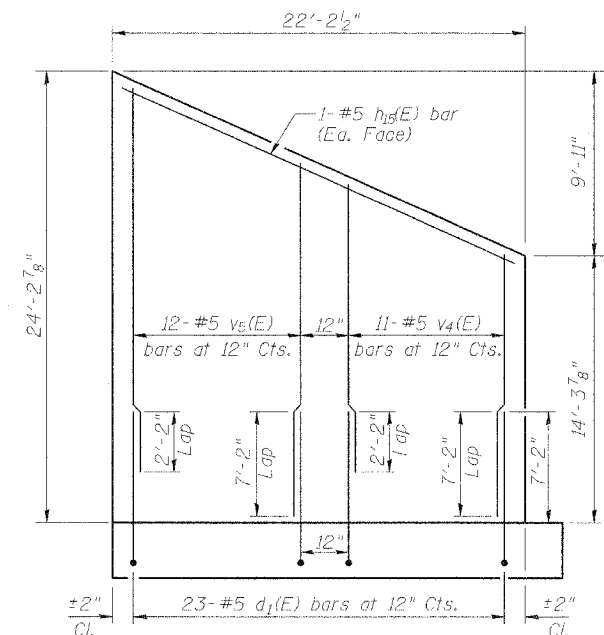
Concrete Structures	Cu. Yd.	278.1
Reinforcement Bars, Epoxy Coated	Pound	45,080
Structure Excavation	Cu. Yd.	1,588
Furnishing Steel Piles, HP 14 x 73	Foot	2,401
Driving Steel Piles	Foot	2,401
Test Piles, HP 14 x 73	Each	2
Metal Shoes	Each	49

Reinforcement bars designated (E) shall be epoxy coated

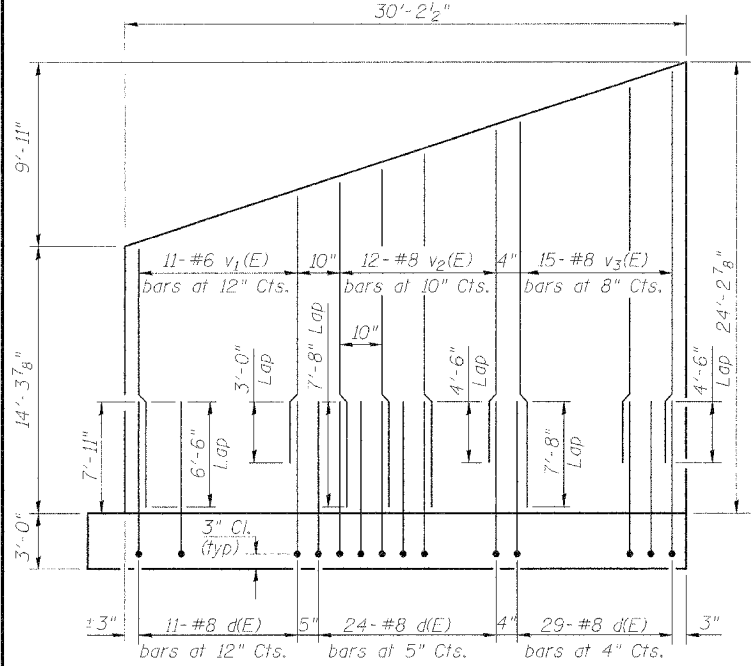
WEST ABUTMENT AND WING WALL REINFORCEMENT
BURLINGTON NORTHERN SANTA FE RAILROAD OVER IL. ROUTE 336
F.A.P. ROUTE 315 SECT. 55-2
McDONOUGH COUNTY
STATION 554+41.87
STRUCTURE NO. 055-9901
B.N.S.F. LINE SEGMENT 0011
B.N.S.F. BRIDGE NO. 206.04



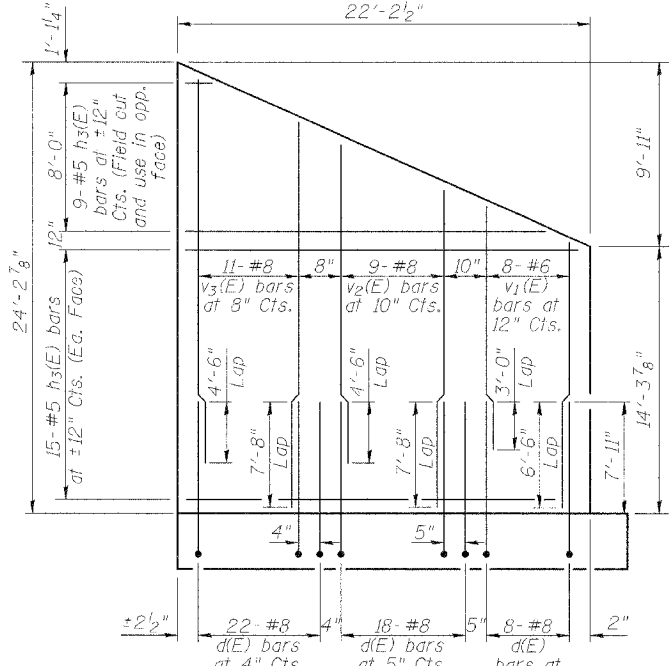
WEST ABUTMENT WING WALL (SOUTH)
(Showing Front Face Reinforcement)



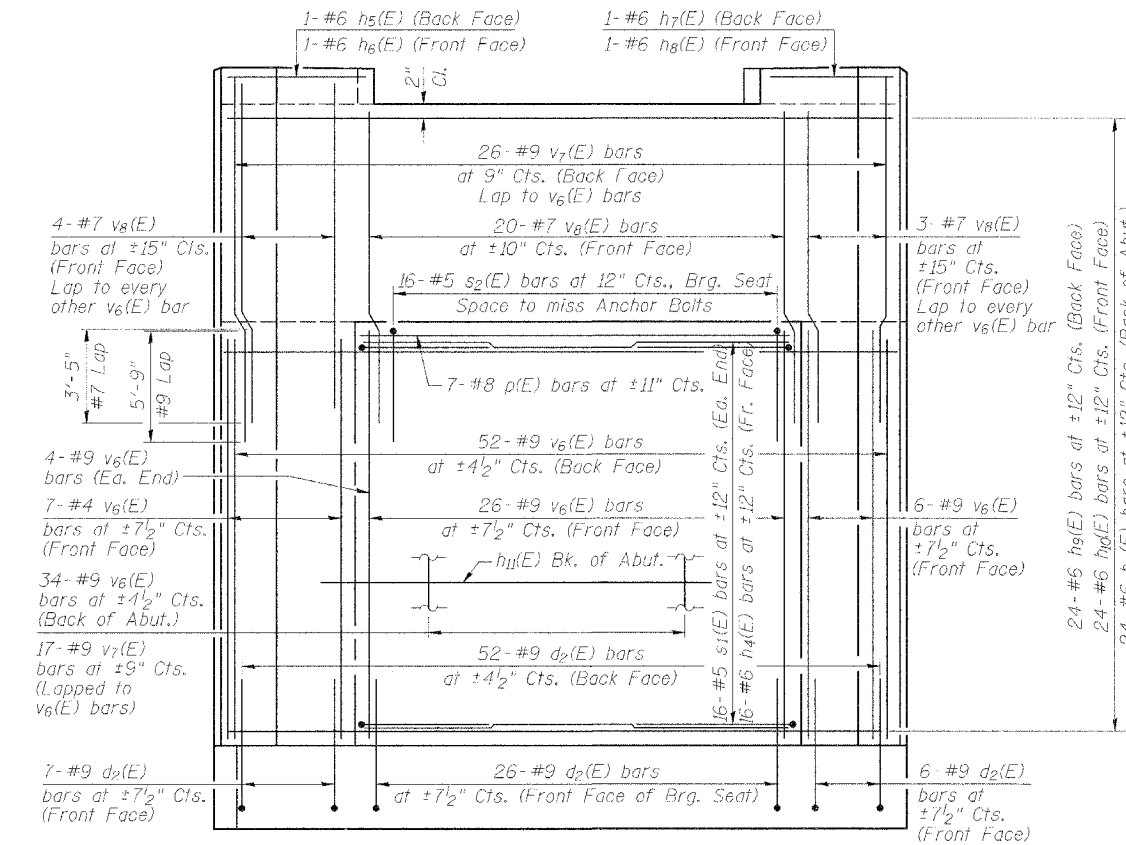
WEST ABUTMENT WING WALL (NORTH)
(Showing Front Face Reinforcement)



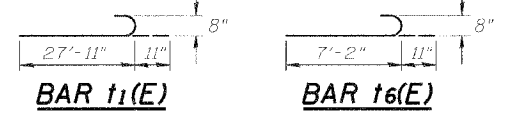
WEST ABUTMENT WING WALL (SOUTH)
(Showing Back Face Reinforcement)



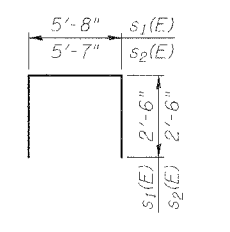
WEST ABUTMENT WING WALL (NORTH)
(Showing Back Face Reinforcement)



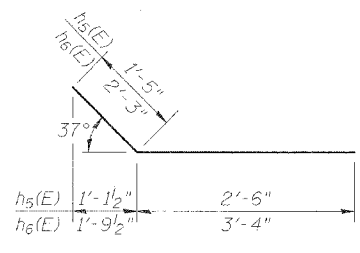
WEST ABUTMENT
(Showing Back and Front of Abutment Reinforcement)



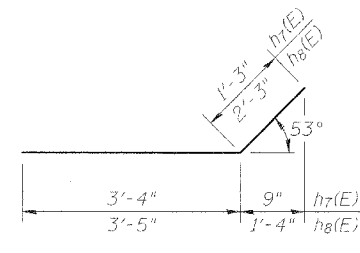
DESIGNED	PJL
CHECKED	WDL
DRAWN	MGM
CHECKED	PJL



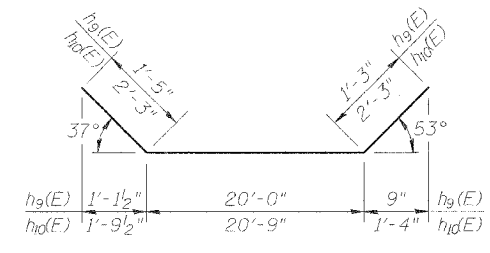
BARS s₁(E) and s₂(E)



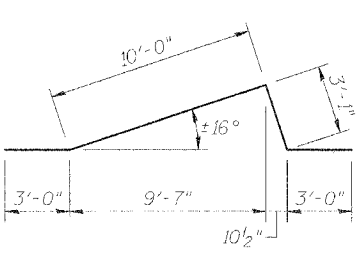
BARS h₅(E) and h₆(E)



BARS h₇(E) and h₈(E)



BARS h₉(E) and h₁₀(E)



BAR h₁₁(E)