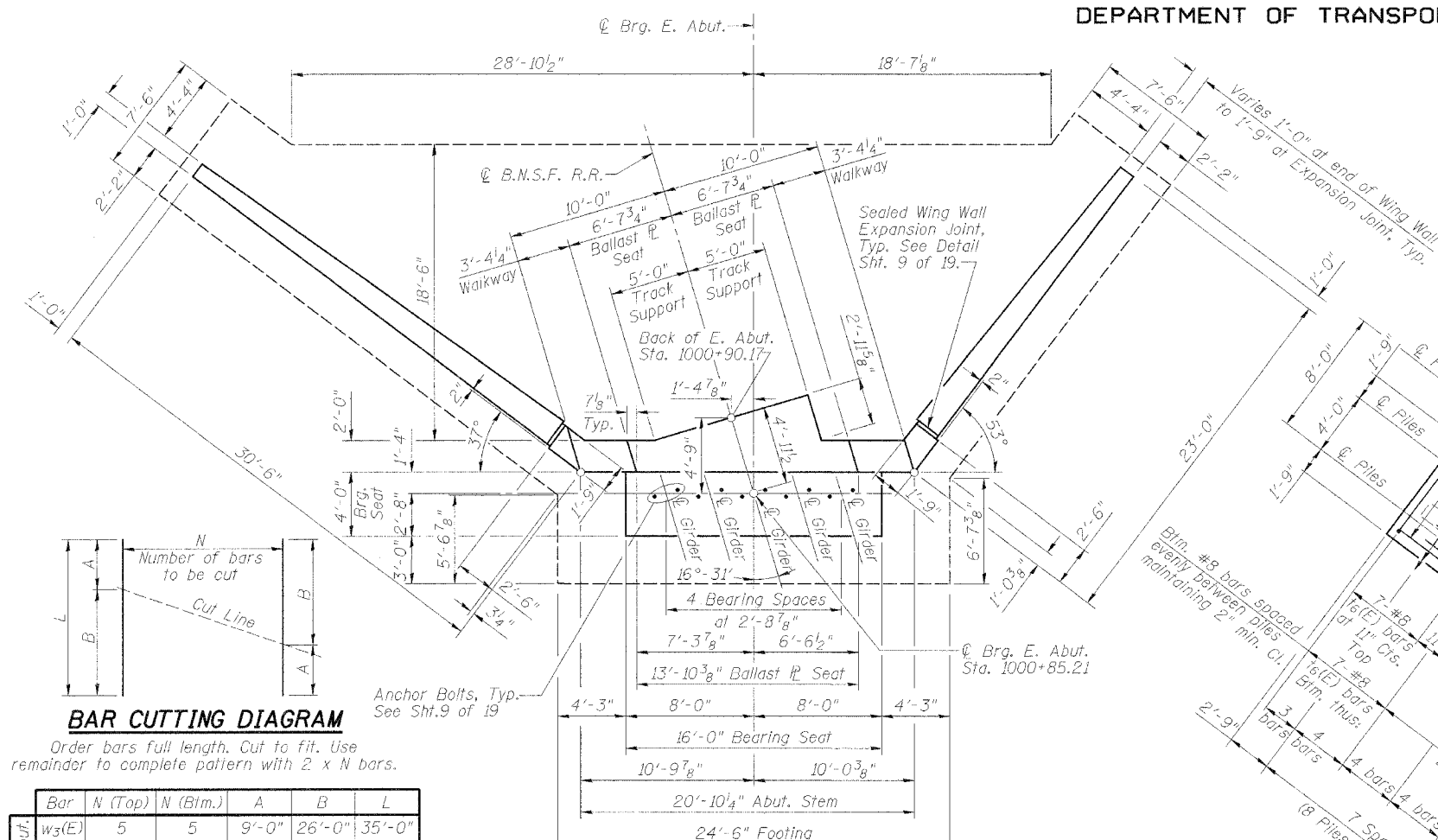
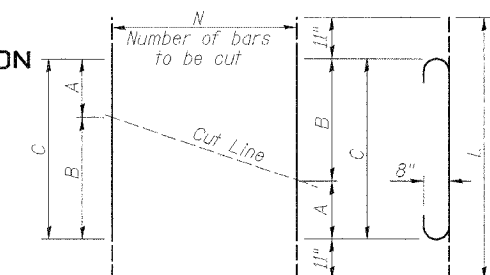


STATE OF ILLINOIS
DEPARTMENT OF TRANSPORTATION

ROUTE NO.	SECTION	COUNTY	SHEETS	SHEET NO.
F.A.P. 315	55-2	McDONOUGH	1025	19 SHEETS
FED. ROAD DIST. NO. 4	ILLINOIS	FED. AID PROJECT-		

Contract # 68205

Bar	N (Top)	N (Btm.)	A	B	C	L
West Abut.						
f ₇ (E)	9	8	8'-0"	20'-0"	28'-0"	29'-10"
f ₈ (E)	5	5	5'-0"	20'-0"	25'-0"	25'-10"
f ₉ (E)	4	4	7'-0"	15'-0"	22'-0"	23'-10"
f ₁₀ (E)	8	7	5'-0"	15'-0"	20'-0"	21'-10"
East Abut.						
f ₁₁ (E)	9	8	8'-0"	19'-6"	27'-6"	29'-4"
f ₁₂ (E)	5	5	5'-0"	19'-6"	24'-6"	26'-4"
f ₁₃ (E)	3	4	9'-0"	15'-0"	24'-0"	25'-10"
f ₁₄ (E)	8	7	5'-0"	15'-0"	20'-0"	21'-10"



BAR CUTTING DIAGRAM
Order bars full length. Cut to fit. Use remainder to complete pattern with 2 x N bars.

Bar	N (Top)	N (Btm.)	A	B	L
W ₃ (E)	5	5	9'-0"	26'-0"	35'-0"
W ₄ (E)	4	4	19'-6"	28'-0"	47'-6"
W ₅ (E)	2	2	8'-0"	15'-0"	23'-0"
W ₇ (E)	5	5	8'-0"	24'-6"	32'-6"
W ₈ (E)	4	4	18'-0"	26'-6"	44'-6"
W ₉ (E)	2	2	8'-0"	14'-0"	22'-0"

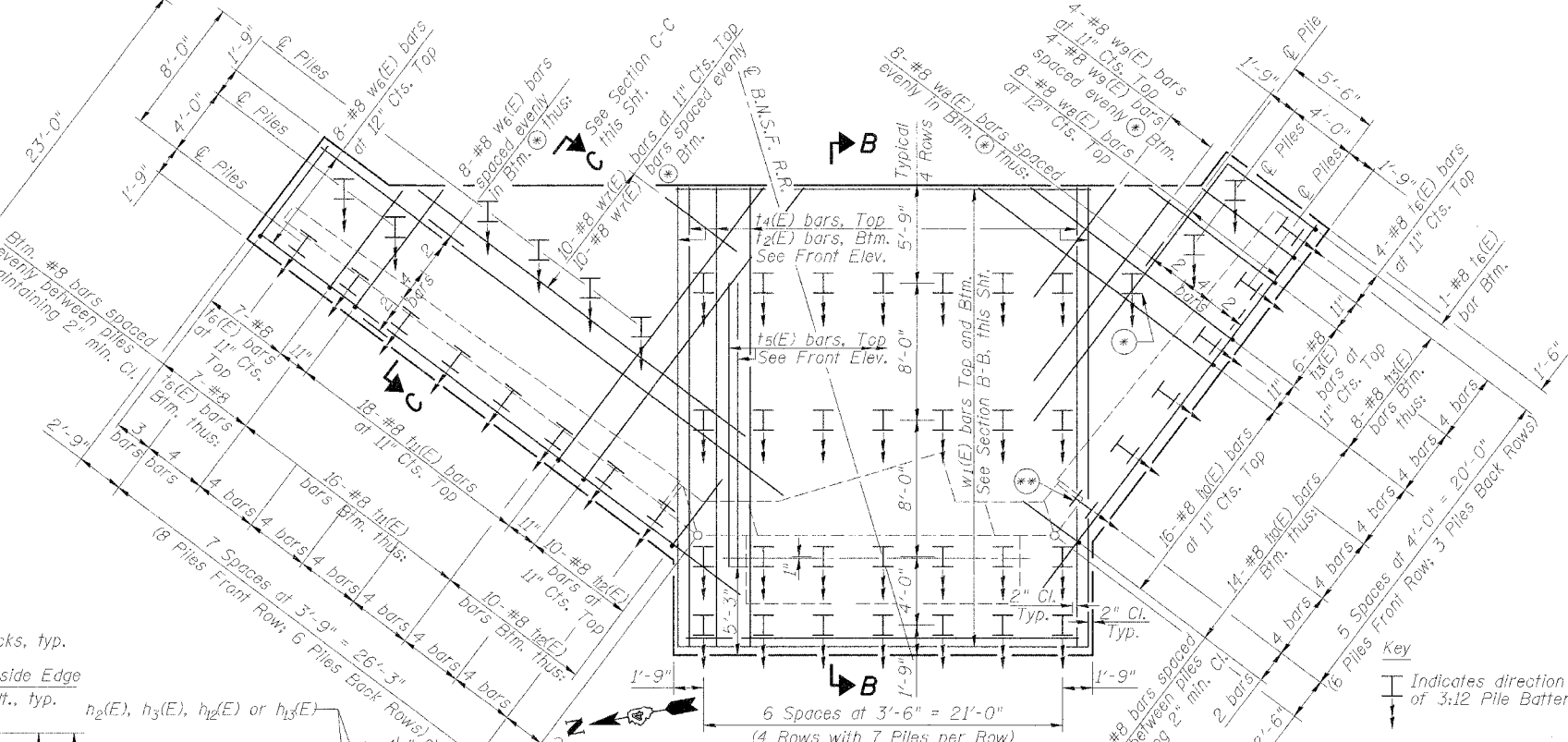


TABLE OF ELEVATIONS

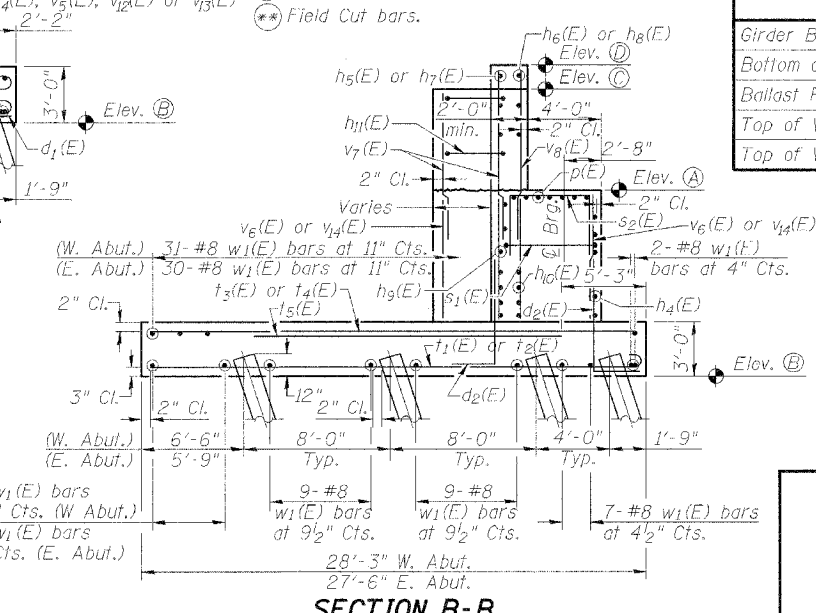
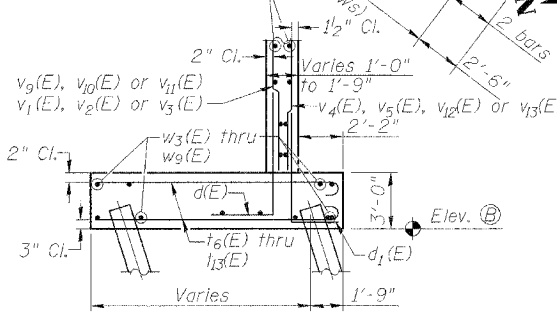
Location	Elev. Point	E. Abut.
Girder Bearing Seat	(A)	683.60
Bottom of Footing	(B)	666.85
Ballast Plate Seal (Top of Girder)	(C)	691.39
Top of Walkway (Inside Edge)	(D)	692.64
Top of Walkway (Outside Edge)	(E)	692.68

EAST ABUTMENT DETAILS
BURLINGTON NORTHERN
SANTA FE RAILROAD OVER
IL. ROUTE 336
F.A.P. ROUTE 315 SECT. 55-2
McDONOUGH COUNTY
STATION 554+41.87
STRUCTURE NO. 055-9901
B.N.S.F. LINE SEGMENT 0011
B.N.S.F. BRIDGE NO. 206.04

DESIGNED P.J.L.
CHECKED W.D.I.
DRAWN M.G.M.
CHECKED P.J.L.

Notes:
1. Space reinforcement in cap to miss anchor bolts.
2. All edges shall have standard 3/4" chamfers except as noted.
3. Reinforcement bars designated (E) shall be epoxy coated.

PILE DATA
Type: Steel (HP 14 x 73)
Capacity: Design 66 tons; Req'd Bearing 99 tons
Est. Length: 57'
No. Req'd: 50 (plus 1 test pile)



STS CONSULTANTS
111 NE Jefferson Ave.
Peoria, Illinois 61602
Ph(309)676-8464
FAX(309)676-5445
IL Design Firm Reg. No. 224-001522