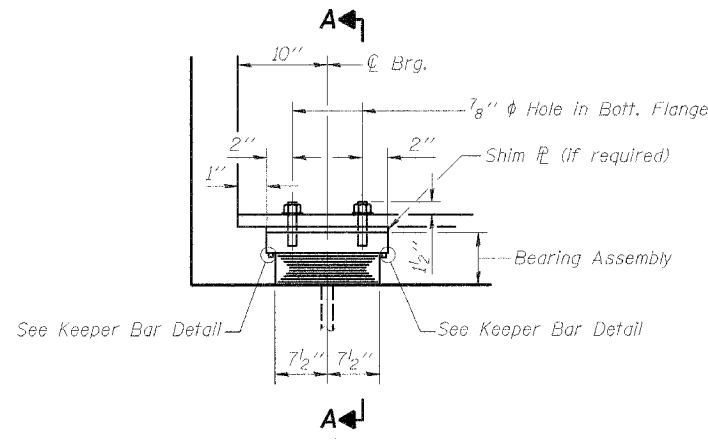


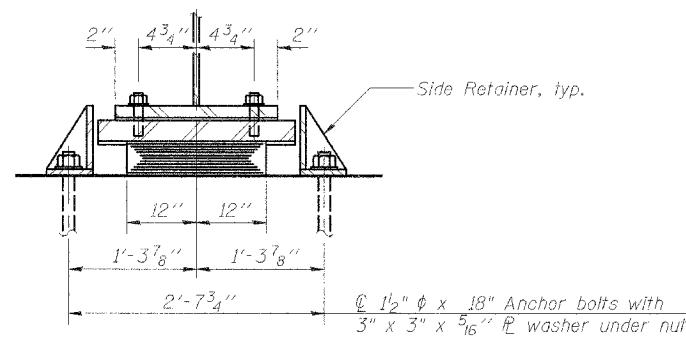
STATE OF ILLINOIS
DEPARTMENT OF TRANSPORTATION

ROUTE NO.	SECTION	COUNTY	TOTAL SHEETS	"SHEET" NO.	SHEET NO. 7
FAP 315	55-2	MCDONOUGH	1025	542	16 SHEETS
FED. ROAD DIST. NO. 7	ILLINOIS	FED. AID PROJECT			

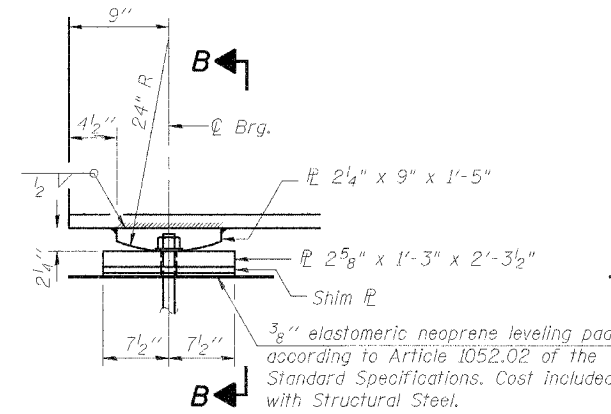
Contract #68205



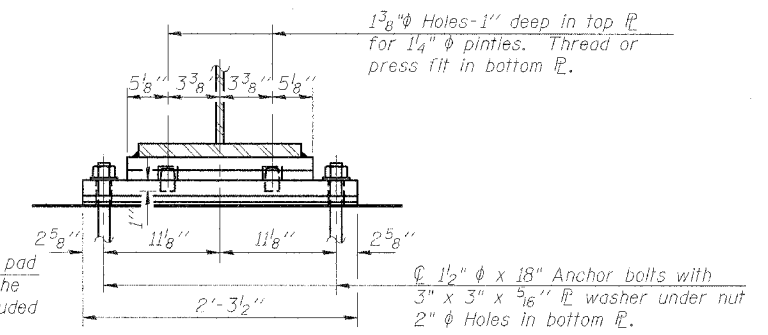
ELEVATION AT EAST ABUT.



SECTION A-A

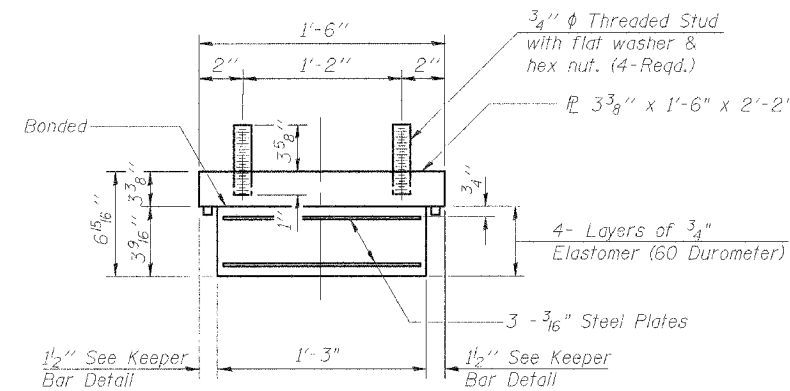


ELEVATION AT WEST ABUT.

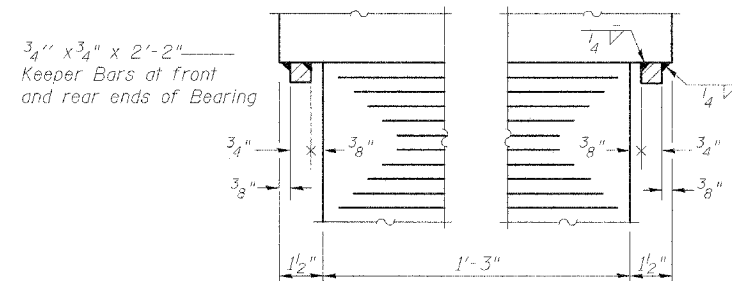


SECTION B-B

TYPE I ELASTOMERIC EXP. BRG.



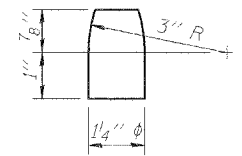
BEARING ASSEMBLY



KEEPER BAR DETAIL

FIXED BEARING

(5 req'd)



PINTLE

	Cooper's E-80 on 5 Girders	Cooper's E-65 on 4 Girders
I_s (in ⁴)	246,212	246,212
S_s (in ³)	5,327	5,327
Q (k/')	1.47	1.47
M_R (k)	2,621	2,621
M_L (k)	3,690	5,997
M (Imp.) (k)	1,387	1,996
$f_s R$ (ksi)	5.9	5.9
f_s (L + I) (ksi)	11.4	18.0
f_s (Total) (ksi)	17.3	23.9
VR (k)	188.5	297.7

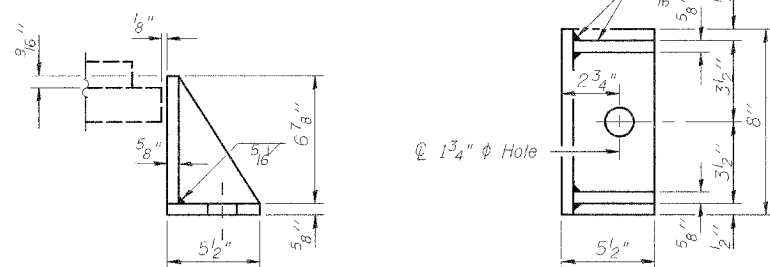
	Cooper's E-80 on 5 Girders	Cooper's E-65 on 4 Girders
R_R (k)	87.7	87.7
R_L (k)	138.9	225.8
Imp. (k)	49.6	71.9
R (Total) (k)	276.2	385.4

- Notes:
- Anchor bolts at fixed bearings may be built into the masonry.
 - See sheet 8 of 16 for Anchor Bolt installation.
 - Shim plates shall not be placed under Bearing Assembly.
 - Field glue bearing pad to the concrete seat per B.N.S.F. requirements.
 - Elastomer shall be 60 Durometer as per B.N.S.F. requirements

- I_s and S_s are the gross moment of inertia and section modulus of the steel section used in computing f_s .
- VR is the maximum Live Load + Impact shear range in span.
- Impact includes vertical effects and rocking effects.
- Loads and stresses are based on service load conditions, ignoring composite action of ballast plate.
- Effects of Live Load and Impact eccentricity are included in distribution of loads to girders.

BILL OF MATERIAL

Item	Unit	Total
Elastomeric Bearing Assembly, Type I (Special)	Each	5



SIDE RETAINER

Equivalent rolled angle with stiffeners will be allowed in lieu of welded plates. Weight included with Structural Steel.

REVISIONS	
NAME	DATE

LI ENGINEERING, LTD.
210 W. Chestnut
Chicago, Illinois 60629
312 461-4600
Fax: 312 461-1106
Designed By: DLS
Checked By: JET
Drawn By: JME
Date: 01/95
File: 0559903.001

ILLINOIS DEPARTMENT OF TRANSPORTATION
BEARINGS
BURLINGTON NORTHERN
SANTA FE RAILROAD OVER RAMP J
F.A.P. ROUTE 315 SECT. 55-2
MCDONOUGH COUNTY
STATION 162+14.00
STRUCTURE NO. 055-9903
B.N.S.F. LINE SEGMENT 0011
B.N.S.F. BRIDGE NO. 206.00

\$FILE\$ABBREV\$

\$TIME\$

\$DATE\$

0559903_11e1.dgn 3/20/2006 11:28:27 AM