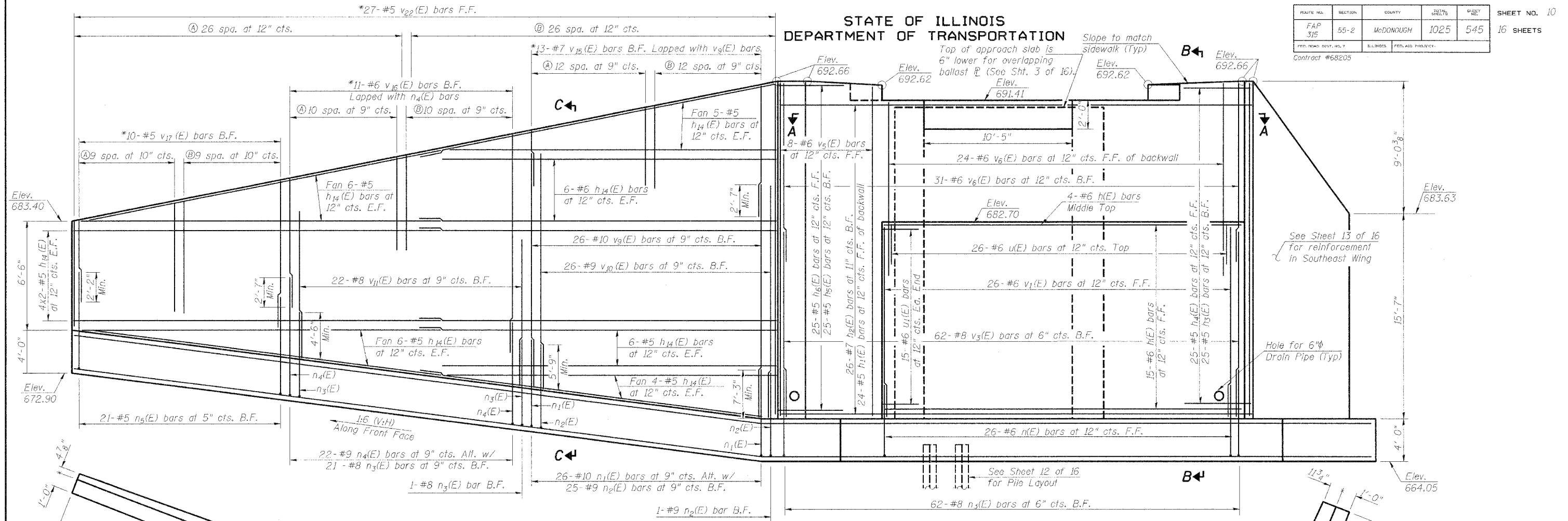
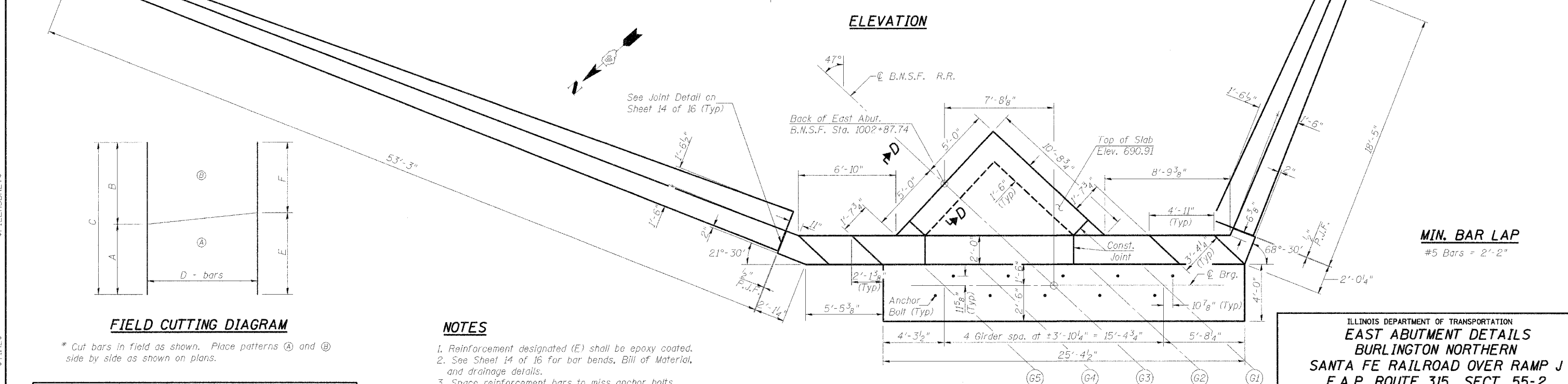


STATE OF ILLINOIS
DEPARTMENT OF TRANSPORTATION

ROUTE NO.	SECTION	COUNTY	SHEET NO.	SHEET NO.
FAP 315	55-2	McDONOUGH	1025	545
SHEET NO. 10 16 SHEETS				



ELEVATION



TOP PLAN

FIELD CUTTING DIAGRAM

* Cut bars in field as shown. Place patterns (A) and (B) side by side as shown on plans.

Bar	A	B	C	D	E	F
v ₁₅ (E)	5'-7"	12'-0"	17'-7"	13	8'-8"	8'-11"
v ₁₆ (E)	8'-10"	14'-3"	23'-1"	11	11'-5"	11'-8"
v ₁₇ (E)	2'-0"	7'-5"	9'-5"	10	4'-7"	4'-10"
v ₂₂ (E)	6'-3"	24'-4"	30'-7"	27	15'-1"	15'-6"

NOTES

1. Reinforcement designated (E) shall be epoxy coated.
2. See Sheet 14 of 16 for bar bends, Bill of Material, and drainage details.
3. Space reinforcement bars to miss anchor bolts.
4. Work this sheet with Sheets 12 and 13 of 16.
5. See Sheet 13 of 16 for Sections A-A, B-B, C-C and D-D.
6. See Sheet 14 of 16 for PJF Joint Detail.

REVISIONS	
NAME	DATE

LI ENGINEERING, LTD.

200 N. Chestnut St. Champaign, Illinois 62829
 (217) 485-4666 FAX (217) 485-4806
 Developed by DLG Checked by WJH Drawn by JML
 Date: 01/06 File: 0559903.DWG

ILLINOIS DEPARTMENT OF TRANSPORTATION
EAST ABUTMENT DETAILS
BURLINGTON NORTHERN
SANTA FE RAILROAD OVER RAMP J
F.A.P. ROUTE 315 SECT. 55-2
McDONOUGH COUNTY
STATION 162+14.00
STRUCTURE NO. 055-9903
B.N.S.F. LINE SEGMENT 0011
B.N.S.F. BRIDGE NO. 206.00

#FILE#BBREV#
#DATE#