

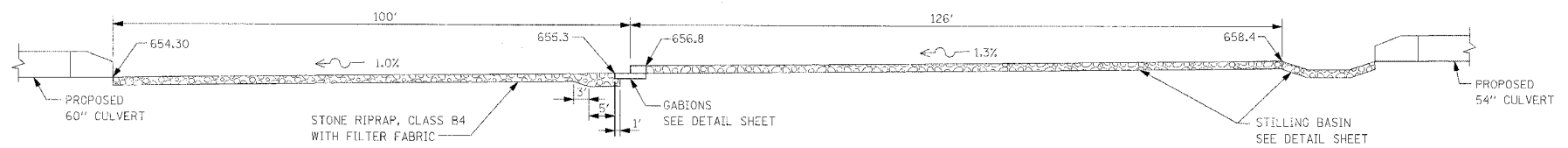
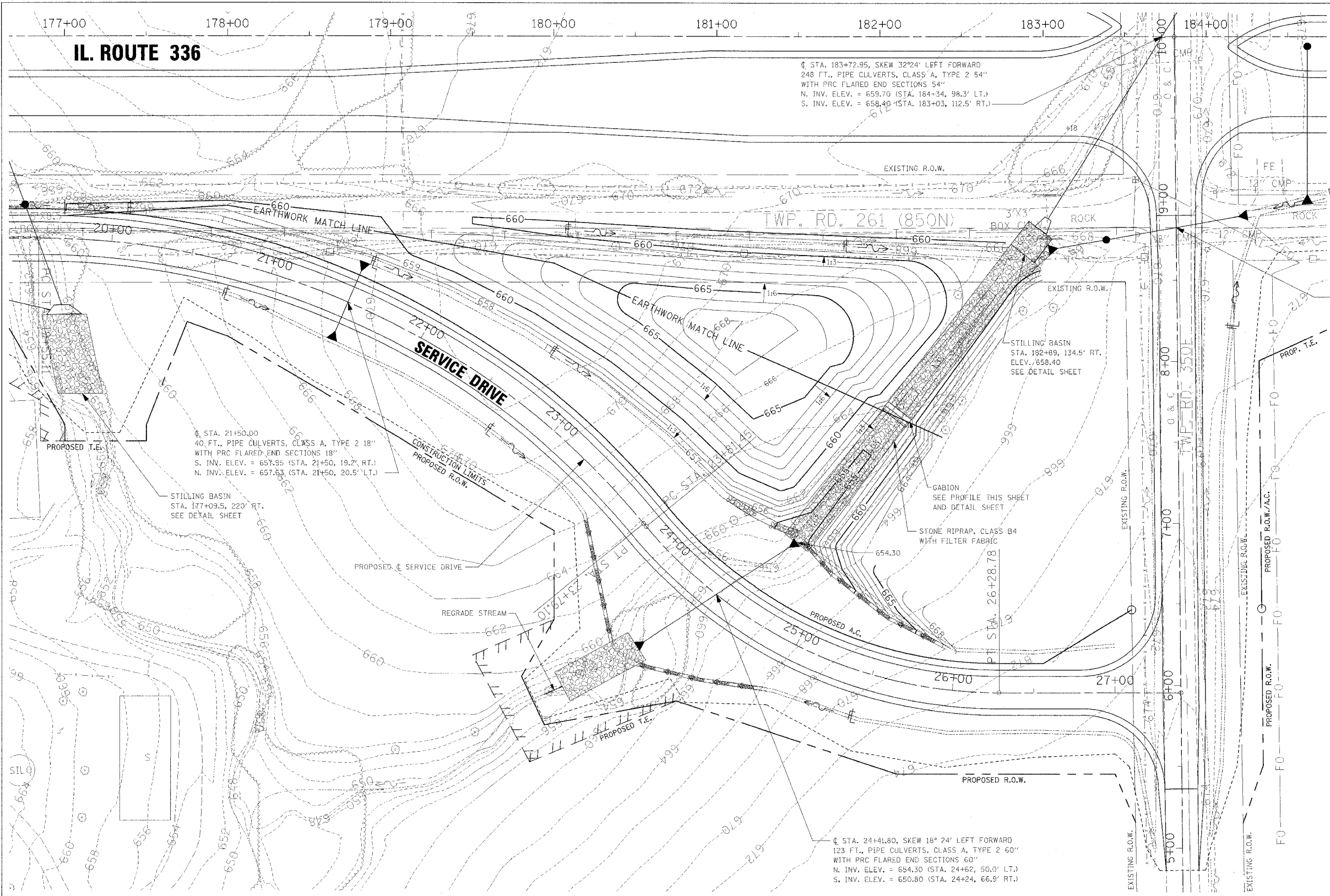
F.A.P. RTE.	SECTION	COUNTY	TOTAL SHEETS	SHEET NO.
315	55-2	McDONOUGH	1025	577
STA.		TO STA.		
FED. ROAD DIST. NO. 4 ILLINOIS FED. AID PROJECT				

☐ STA. 183+72.95, SKEW 32°24' LEFT FORWARD
 248 FT., PIPE CULVERTS, CLASS 'A, TYPE 2 54"
 WITH PRC FLARED END SECTIONS 54"
 N. INV. ELEV. = 659.70 (STA. 184+34, 98.3' LT.)
 S. INV. ELEV. = 658.40 (STA. 183+03, 112.5' RT.)

☐ STA. 8+82.16 SKEW 9° 27' RIGHT FORWARD
 118 FT., PIPE CULVERTS, CLASS A, TYPE 3 18"
 WITH PRC FLARED END SECTIONS 18"
 E. INV. ELEV. = 664.72 (STA. 8+89, 42.5' RT.)
 W. INV. ELEV. = 658.40 (STA. 8+70, 73.9' LT.)

☐ STA. 21+50.00
 40 FT., PIPE CULVERTS, CLASS A, TYPE 2 18"
 WITH PRC FLARED END SECTIONS 18"
 S. INV. ELEV. = 657.85 (STA. 21+50, 19.2' RT.)
 N. INV. ELEV. = 657.63 (STA. 21+50, 20.5' LT.)

☐ STA. 24+41.80, SKEW 18° 24' LEFT FORWARD
 123 FT., PIPE CULVERTS, CLASS A, TYPE 2 60"
 WITH PRC FLARED END SECTIONS 60"
 N. INV. ELEV. = 654.30 (STA. 24+62, 50.0' LT.)
 S. INV. ELEV. = 650.80 (STA. 24+24, 66.9' RT.)



REVISIONS	
NAME	DATE

ILLINOIS DEPARTMENT OF TRANSPORTATION
GRADING DETAIL
IL. ROUTE 336
RT. STA. 178+00 TO STA. 184+00
 DATE 3/30/06
 DRAWN BY
 CHECKED BY