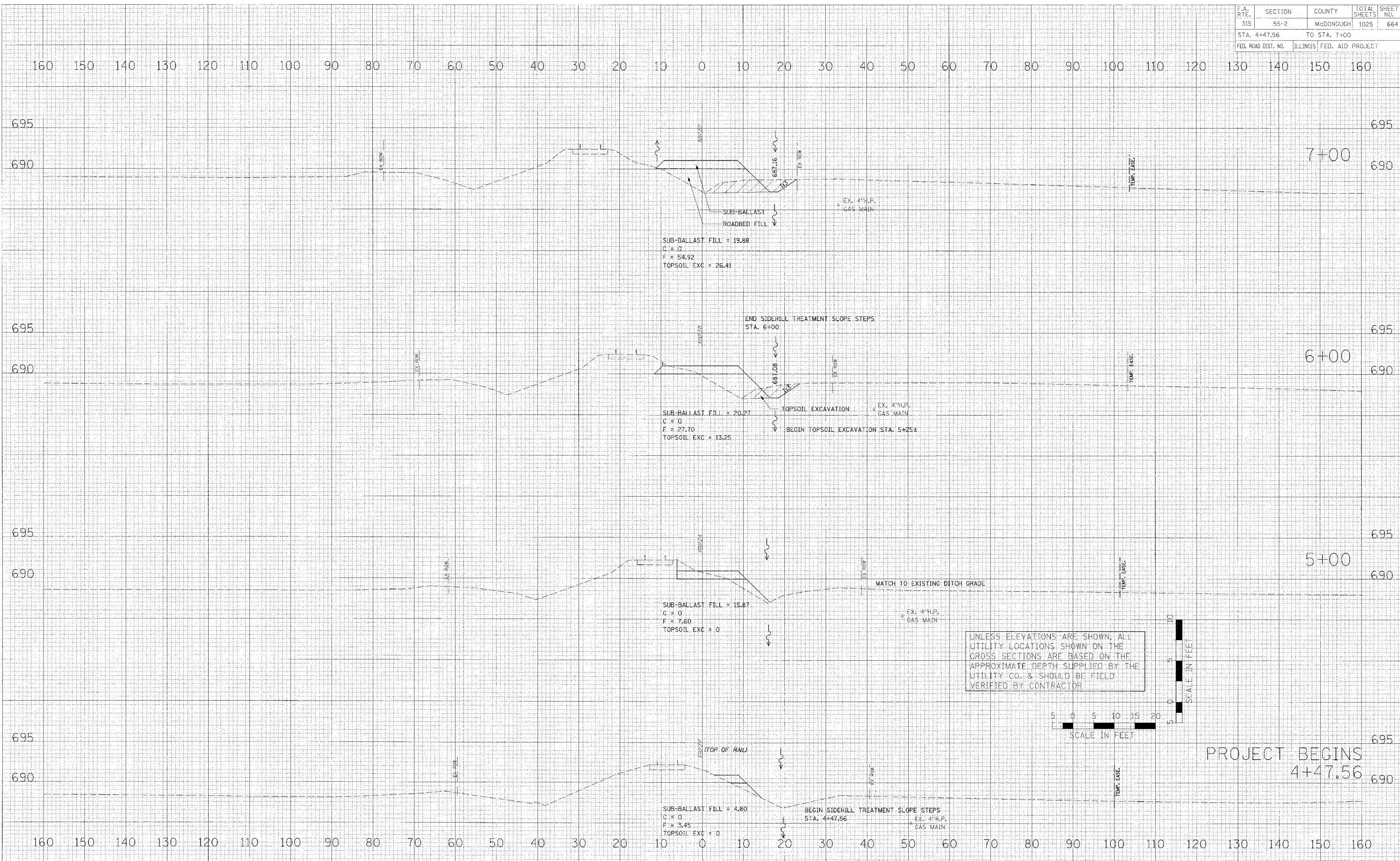


| F.A. RTE.           | SECTION | COUNTY                    | TOTAL SHEETS | SHEET NO. |
|---------------------|---------|---------------------------|--------------|-----------|
| 315                 | 55-2    | McDONOUGH                 | 1025         | 664       |
| STA. 4+47.56        |         | TO STA. 7+00              |              |           |
| FED. ROAD DIST. NO. |         | ILLINOIS FED. AID PROJECT |              |           |

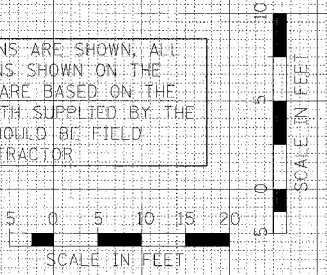
|               |     |
|---------------|-----|
| DATE          | BY  |
| SURVEYED      | BY  |
| PLOTTED       | BY  |
| NOTE BOOK     | NO. |
| AREAS CHECKED |     |

|               |     |
|---------------|-----|
| DATE          | BY  |
| SURVEYED      | BY  |
| PLOTTED       | BY  |
| NOTE BOOK     | NO. |
| AREAS CHECKED |     |

|             |    |
|-------------|----|
| DATE        | BY |
| FILE NAME   |    |
| PLLOT SCALE |    |
| USER NAME   |    |



UNLESS ELEVATIONS ARE SHOWN, ALL UTILITY LOCATIONS SHOWN ON THE CROSS SECTIONS ARE BASED ON THE APPROXIMATE DEPTH SUPPLIED BY THE UTILITY CO. & SHOULD BE FIELD VERIFIED BY CONTRACTOR



PROJECT BEGINS  
4+47.56

**MAINTENANCE OF TRAFFIC - CROSS SECTIONS - RAILROAD SHOO-FLY - IL. ROUTE 336**