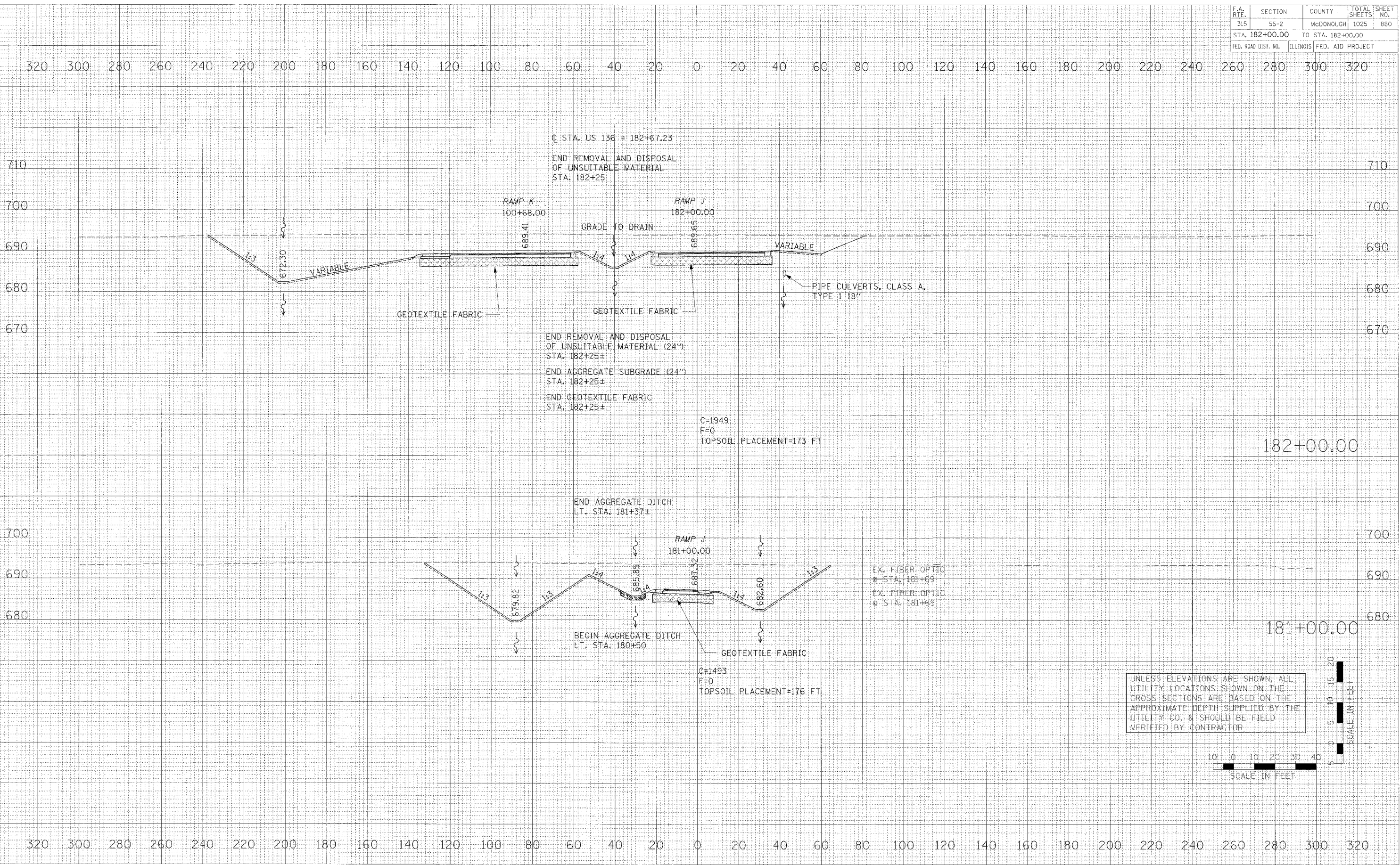
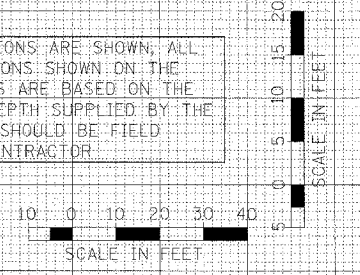


F.A. RTE.	SECTION	COUNTY	TOTAL SHEETS	SHEET NO.
315	55-2	McDONOUGH	1025	880
STA. 182+00.00		TO STA. 182+00.00		
FED. ROAD DIST. NO.	ILLINOIS	FED. AID PROJECT		



UNLESS ELEVATIONS ARE SHOWN, ALL UTILITY LOCATIONS SHOWN ON THE CROSS SECTIONS ARE BASED ON THE APPROXIMATE DEPTH SUPPLIED BY THE UTILITY CO. & SHOULD BE FIELD VERIFIED BY CONTRACTOR



DATE: _____
BY: _____
SURVEYED: _____
PLOTTED: _____
NOTED: _____
NO. _____

DATE: _____
BY: _____
SURVEYED: _____
PLOTTED: _____
NOTED: _____
NO. _____

DATE: _____
SCALE: _____
USER: _____

CROSS SECTIONS - RAMP J