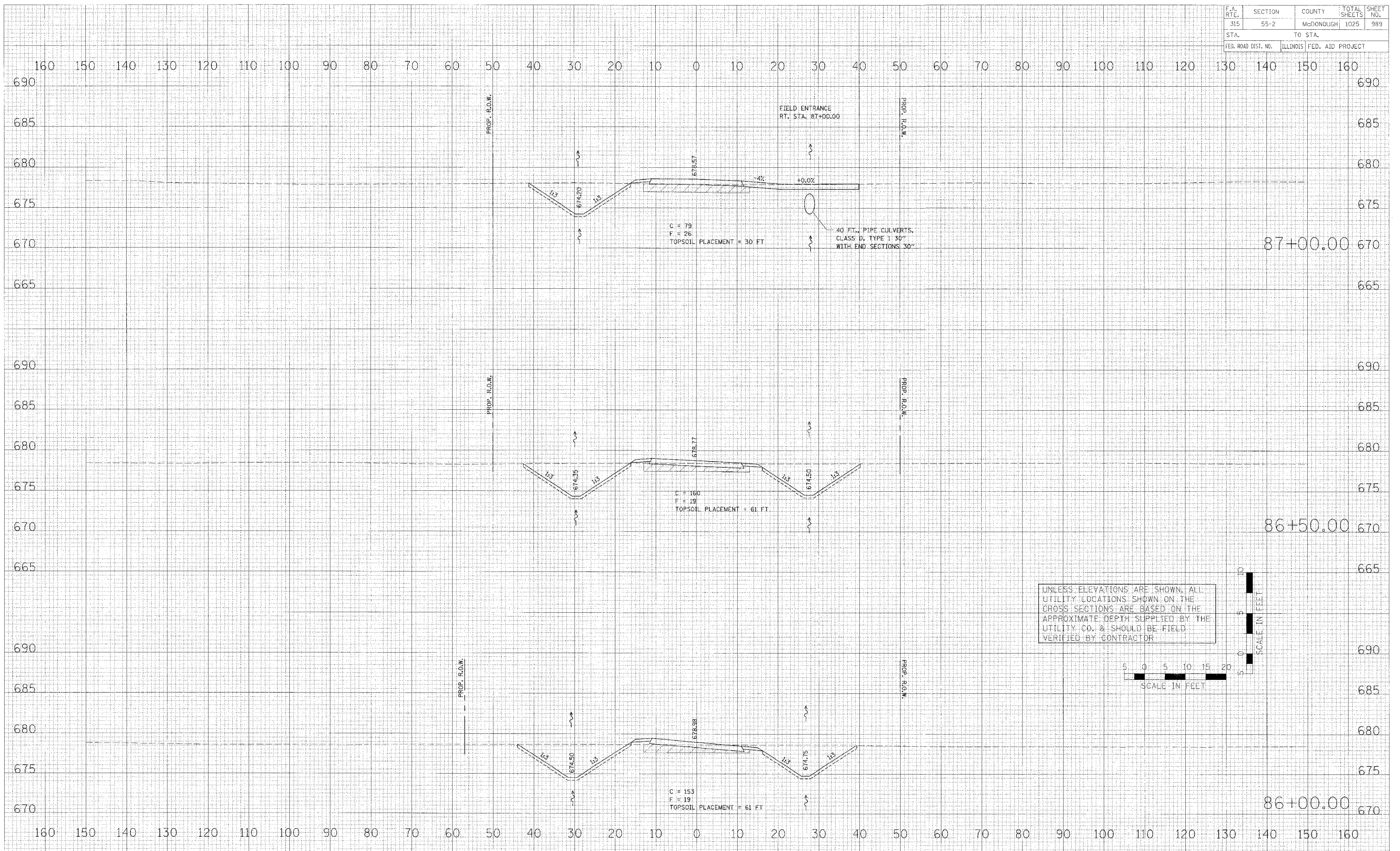


F.A. RTE.	SECTION	COUNTY	TOTAL SHEETS	SHEET NO.
315	55-2	MCDONOUGH	1025	989
STA.		TO STA.		
FED. ROAD DIST. NO.		ILLINOIS FED. AID PROJECT		

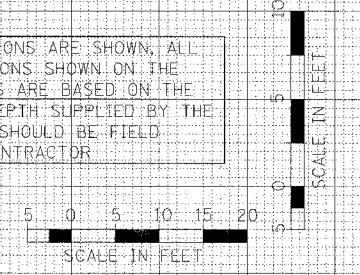
DATE	BY
DATE	BY
DATE	BY

DATE	BY
DATE	BY
DATE	BY

DATE	BY
DATE	BY
DATE	BY



UNLESS ELEVATIONS ARE SHOWN, ALL UTILITY LOCATIONS SHOWN ON THE CROSS SECTIONS ARE BASED ON THE APPROXIMATE DEPTH SUPPLIED BY THE UTILITY CO. & SHOULD BE FIELD VERIFIED BY CONTRACTOR



**CROSS SECTIONS - TWP. RD. 900N (RELOCATED)**