
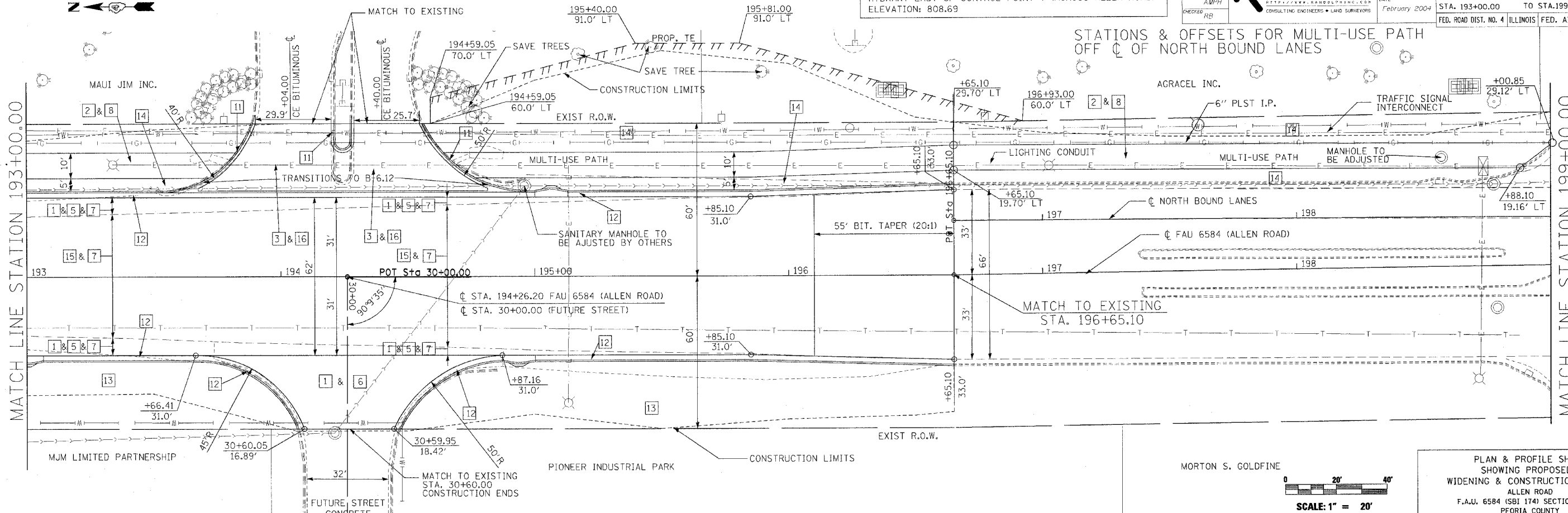


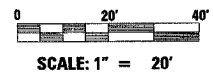
| | | | | | | | |
|---------------------|---------------|---------------|---------------|--|---|---|--|
| DESIGNED AMPH/RB | CHECKED RB | DRAWN AMPH | CHECKED RB |  RANDOLPH & ASSOCIATES, INC. 101 W. PEARCE PARKWAY, PEORIA, IL 61614-0234 TEL: 309-693-0804 FAX: 309-693-0808 T: 800-953-7882 HTTP://WWW.RANDOLPH-INC.COM CONSULTING ENGINEERS • LAND SURVEYORS | FILE NUMBER 136.115 DATE February 2004 | F.A.U. RTE. 6584 SECTION 105R-1 COUNTY PEORIA TOTAL SHEETS 115 SHEET NO. 35 | STA. 193+00.00 TO STA. 199+00.00 FED. ROAD DIST. NO. 4 ILLINOIS FED. AID PROJECT |
|---------------------|---------------|---------------|---------------|--|---|---|--|

TBM #11 NORTHEAST TOP FLANGE BOLT ON HYDRANT EAST OF CONTROL POINT 7 (ACROSS ALLEN ROAD) ELEVATION: 808.69

STATIONS & OFFSETS FOR MULTI-USE PATH OFF C OF NORTH BOUND LANES



PLAN & PROFILE SHEET SHOWING PROPOSED WIDENING & CONSTRUCTION DETAIL ALLEN ROAD F.A.U. 6584 (SBI 174) SECTION 105R-1 PEORIA COUNTY



- | | | | |
|---|---|----|---------------------------------------|
| 1 | SUBBASE GRANULAR MATERIAL TYPE A 4" | 9 | BITUMINOUS BASE COURSE 4" |
| 2 | AGGREGATE BASE COURSE TYPE B, 6" | 10 | EROSION CONTROL BLANKET |
| 3 | BITUMINOUS BASE COURSE 6" | 11 | COMB. CONC. CURB & GUTTER TYPE B6.12 |
| 4 | BITUMINOUS CONCRETE SURFACE COURSE 1 1/2" | 12 | COMB. CONC. CURB & GUTTER TYPE B6.24 |
| 5 | BITUMINOUS BASE COURSE 12" | 13 | TOPSOIL & SEEDING |
| 6 | PORTLAND CEMENT CONCRETE PAVEMENT 10" | 14 | TOPSOIL & SOD |
| 7 | BITUMINOUS CONCRETE SURFACE COURSE 2" | 15 | LEVELING BINDER 3/4" |
| 8 | BITUMINOUS CONCRETE SURFACE COURSE MIX C 3" | 16 | INCIDENTIAL BITUMINOUS SURFACING - 2" |

PLAN
 SURVEYED
 PLOTTED
 CHECKED
 ALIGNED
 REVISIONS
 DATE
 BY

PROFILE
 SURVEYED
 PLOTTED
 CHECKED
 ALIGNED
 REVISIONS
 DATE
 BY