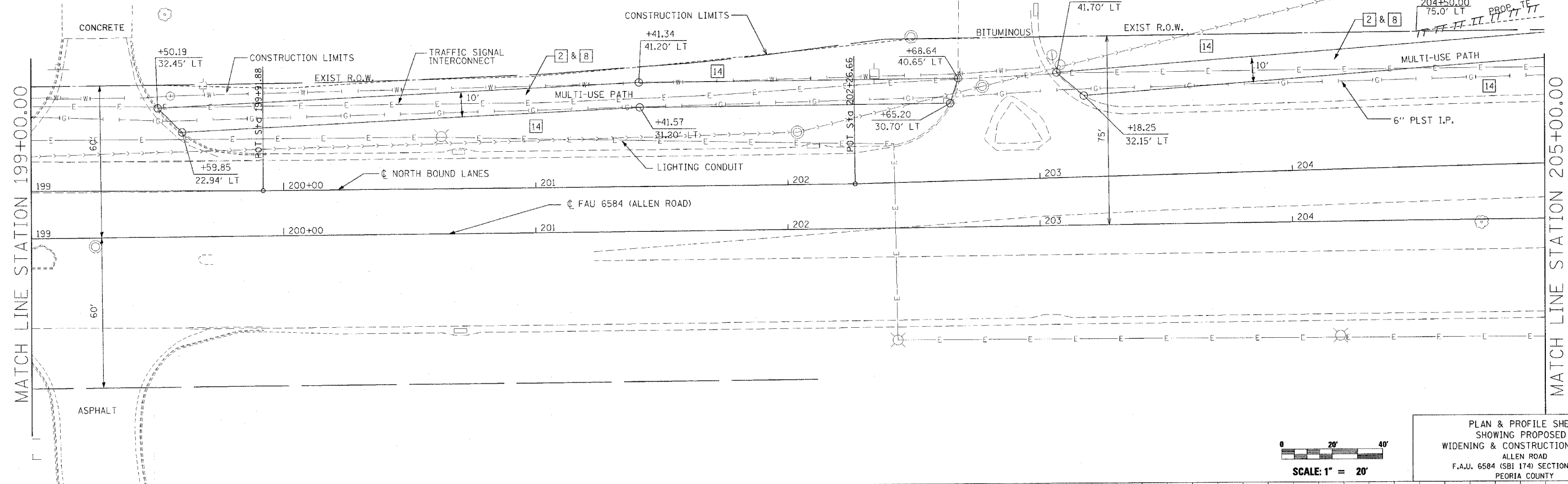
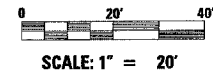


| | | | | | | | |
|---------------------|--|------------------------|----------------------------------|-------------------|---|------------------------|--------------------|
| DESIGNED AMPH/RB | RANDOLPH & ASSOCIATES, INC. 111 N. HICKORY PARKWAY, PEORIA, IL 61614-2114 TEL: 309-693-8844 FAX: 309-693-8855 • 1-800-323-7221 H.I.P. // K.W. ARNDT P.H.E.R.E., C.O.M. CONSULTING ENGINEERS • LAND SURVEYORS | FILE NUMBER 135.115 | F.A.U. RTE. 6584 | SECTION 105R-1 | COUNTY PEORIA | TOTAL SHEETS 115 | SHEET NO. 36 |
| CHECKED RB | | DATE February 2004 | STA. 199+00.00 TO STA. 205+00.00 | | FED. ROAD DIST. NO. 4 ILLINOIS FED. AID PROJECT | | |
| DRAWN AMPH | | | | | | | |
| CHECKED RB | | | | | | | |

STATIONS & OFFSETS FOR MULTI-USE PATH OFF C OF NORTH BOUND LANES

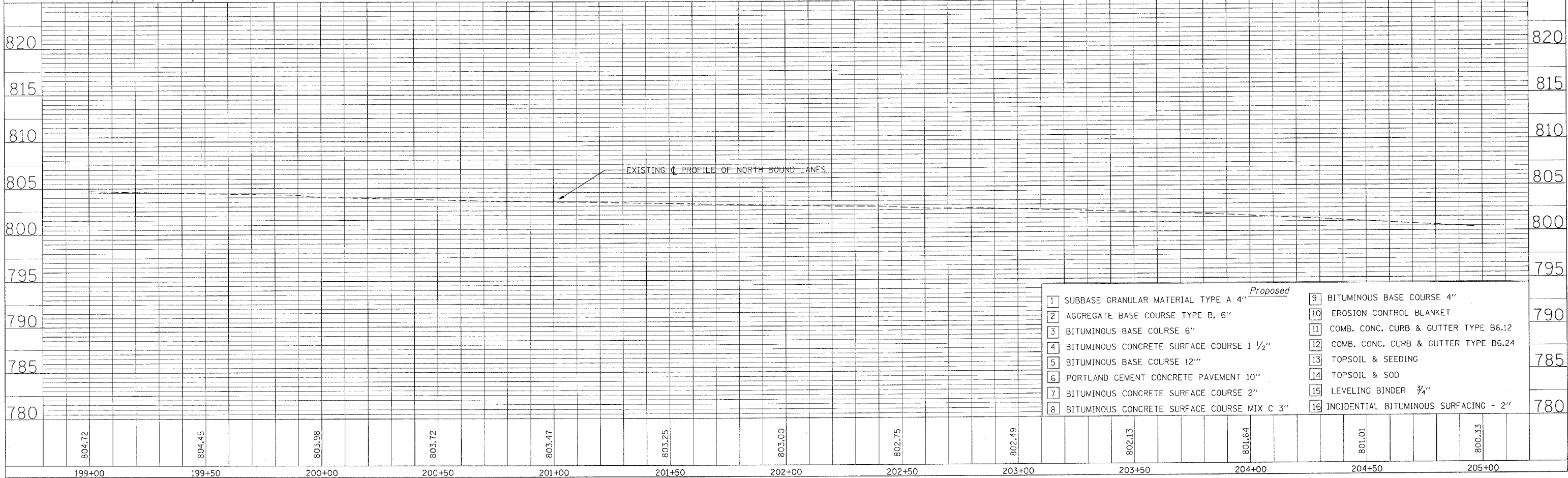


PLAN & PROFILE SHEET
SHOWING PROPOSED
WIDENING & CONSTRUCTION DETAIL
ALLEN ROAD
F.A.U. 6584 (SBI 174) SECTION 105R-1
PEORIA COUNTY



| | |
|-------------------|------|
| PLAN | DATE |
| BY | |
| CHECKED | |
| DRAWN | |
| NO. OF SHEETS | |
| NO. OF THIS SHEET | |
| DATE | |

| | |
|-------------------|------|
| PROFILE | DATE |
| BY | |
| CHECKED | |
| DRAWN | |
| NO. OF SHEETS | |
| NO. OF THIS SHEET | |
| DATE | |



- | | |
|---|---|
| 1 SUBBASE GRANULAR MATERIAL TYPE A 4" | 9 BITUMINOUS BASE COURSE 4" |
| 2 AGGREGATE BASE COURSE TYPE B, 6" | 10 EROSION CONTROL BLANKET |
| 3 BITUMINOUS BASE COURSE 6" | 11 COMB. CONC. CURB & GUTTER TYPE B6.12 |
| 4 BITUMINOUS CONCRETE SURFACE COURSE 1 1/2" | 12 COMB. CONC. CURB & GUTTER TYPE B6.24 |
| 5 BITUMINOUS BASE COURSE 12" | 13 TOPSOIL & SEEDING |
| 6 PORTLAND CEMENT CONCRETE PAVEMENT 10" | 14 TOPSOIL & SOD |
| 7 BITUMINOUS CONCRETE SURFACE COURSE 2" | 15 LEVELING BINDER 3/4" |
| 8 BITUMINOUS CONCRETE SURFACE COURSE MIX C 3" | 16 INCIDENTAL BITUMINOUS SURFACING - 2" |