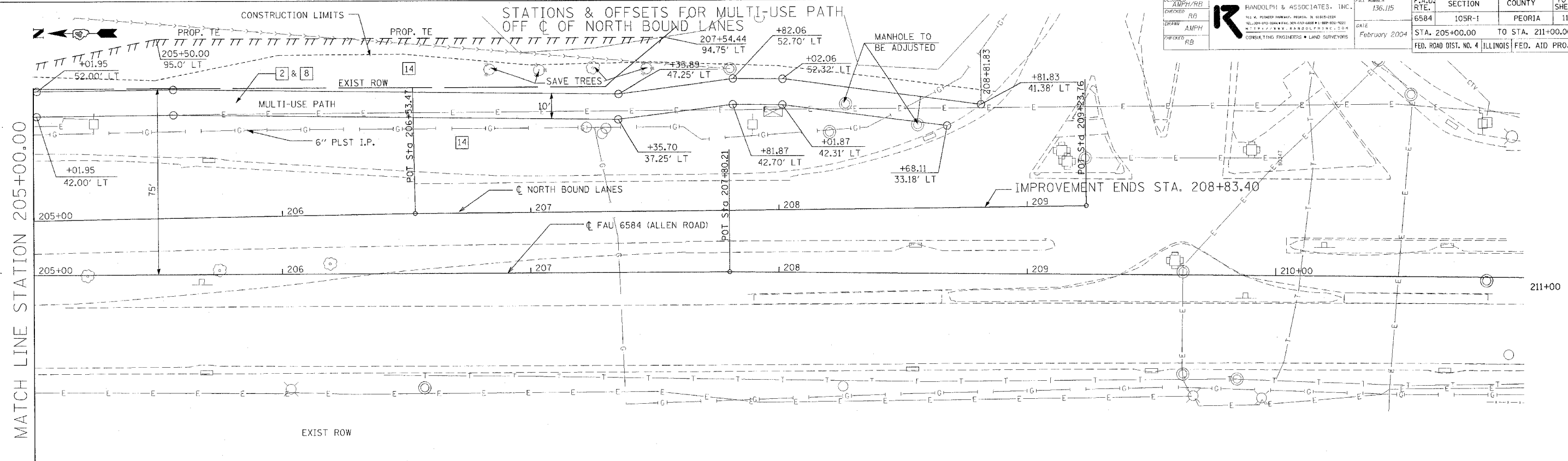


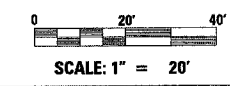
DESIGNED AMPH/RB	FILE NUMBER 136.115	F.A.U. RTE. 6584	SECTION 105R-1	COUNTY PEORIA	TOTAL SHEETS 115	SHEET NO. 37
CHECKED RB	DATE February 2004	STA. 205+00.00 TO STA. 211+00.00		FED. ROAD DIST. NO. 4 ILLINOIS FED. AID PROJECT		
DRAWN AMPH		RANDOLPH & ASSOCIATES, INC. 111 W. PIONEER PARKWAY, PEORIA, IL 61614-3334 TEL. (309) 253-2844 FAX (309) 253-2828 REGISTERED PROFESSIONAL ENGINEERS & LAND SURVEYORS				
PERMITTED RB						

STATIONS & OFFSETS FOR MULTI-USE PATH
OFF C OF NORTH BOUND LANES

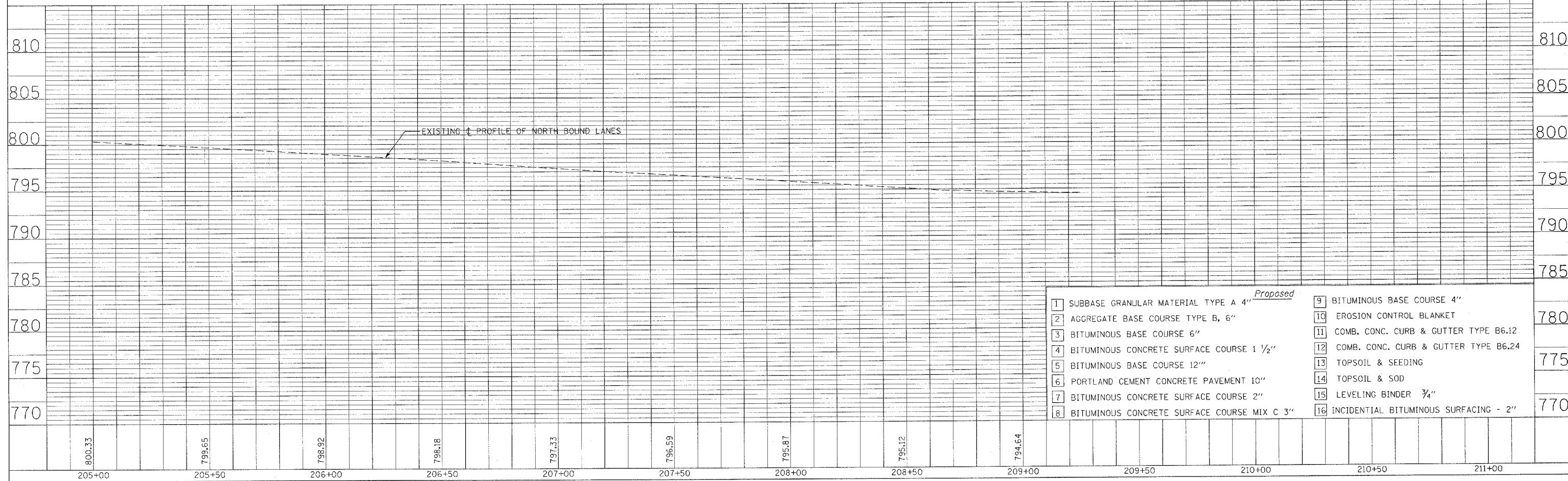


PLAN	DRAWN	DATE
NO.	BY	
NO.	BY	
NO.	BY	

PLAN & PROFILE SHEET
SHOWING PROPOSED
WIDENING & CONSTRUCTION DETAIL
ALLEN ROAD
F.A.U. 6584 (SBI 174) SECTION 105R-1
PEORIA COUNTY



PROFILE	DRAWN	DATE
NO.	BY	
NO.	BY	
NO.	BY	



- | | | | |
|---|---|----|--------------------------------------|
| 1 | SUBBASE GRANULAR MATERIAL TYPE A 4" <i>Proposed</i> | 9 | BITUMINOUS BASE COURSE 4" |
| 2 | AGGREGATE BASE COURSE TYPE B, 6" | 10 | EROSION CONTROL BLANKET |
| 3 | BITUMINOUS BASE COURSE 6" | 11 | COMB. CONC. CURB & GUTTER TYPE B6.12 |
| 4 | BITUMINOUS CONCRETE SURFACE COURSE 1 1/2" | 12 | COMB. CONC. CURB & GUTTER TYPE B6.24 |
| 5 | BITUMINOUS BASE COURSE 12" | 13 | TOPSOIL & SEEDING |
| 6 | PORTLAND CEMENT CONCRETE PAVEMENT 10" | 14 | TOPSOIL & SOD |
| 7 | BITUMINOUS CONCRETE SURFACE COURSE 2" | 15 | LEVELING BINDER 3/4" |
| 8 | BITUMINOUS CONCRETE SURFACE COURSE MIX C 3" | 16 | INCIDENTAL BITUMINOUS SURFACING - 2" |