

DESIGNED BY: R
 CHECKED BY: R
 DRAWN BY: AMP
 FILED BY: R
 RANDOLPH & ASSOCIATES, INC.
 111 W. FRENCH AVENUE, PEORIA, ILLINOIS 61604
 TEL: 309.691.4444 FAX: 309.691.4445
 WWW: WWW.RANDOLPH-ASSOCIATES.COM
 CONSULTING ENGINEERS & ARCHITECTS
 DATE: February 2004

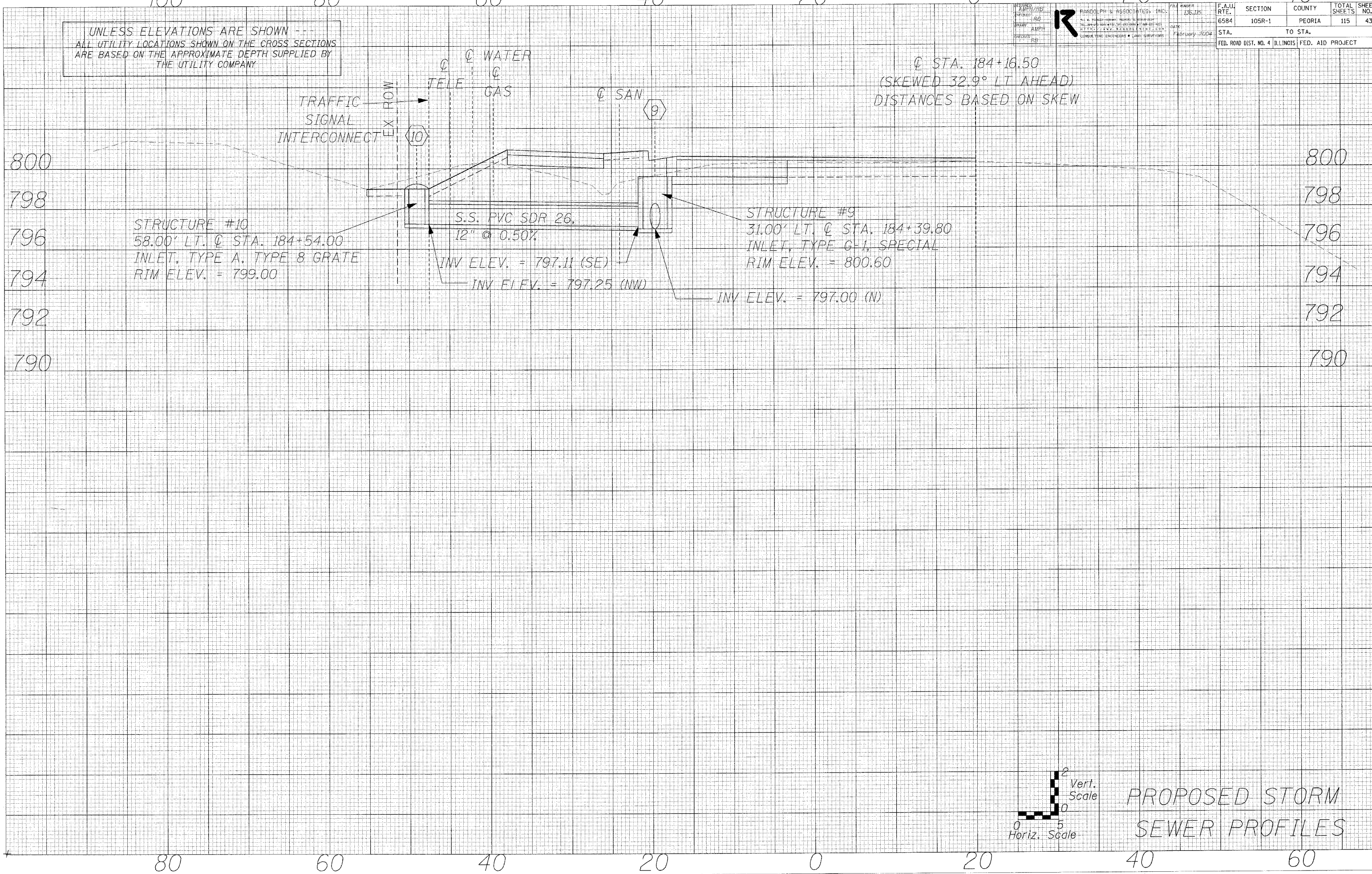
F.A.U. RTE.	SECTION	COUNTY	TOTAL SHEETS	SHEET NO.
6584	105R-1	PEORIA	115	43

STA. _____ TO STA. _____
 FED. ROAD DIST. NO. 4 ILLINOIS FED. AID PROJECT

UNLESS ELEVATIONS ARE SHOWN --
 ALL UTILITY LOCATIONS SHOWN ON THE CROSS SECTIONS
 ARE BASED ON THE APPROXIMATE DEPTH SUPPLIED BY
 THE UTILITY COMPANY

BY: _____
 DATE: _____
 SURVEY PLOTTED _____
 TEMPLATE _____
 AREAS CHECKED _____
 NO. _____

BY: _____
 DATE: _____
 SURVEY PLOTTED _____
 TEMPLATE _____
 AREAS CHECKED _____
 NO. _____



PROPOSED STORM
 SEWER PROFILES