

80 60 40 20 0 20 40 60

UNLESS ELEVATIONS ARE SHOWN ---
ALL UTILITY LOCATIONS SHOWN ON THE CROSS SECTIONS
ARE BASED ON THE APPROXIMATE DEPTH SUPPLIED BY
THE UTILITY COMPANY

FAU 6584
(ALLEN ROAD)

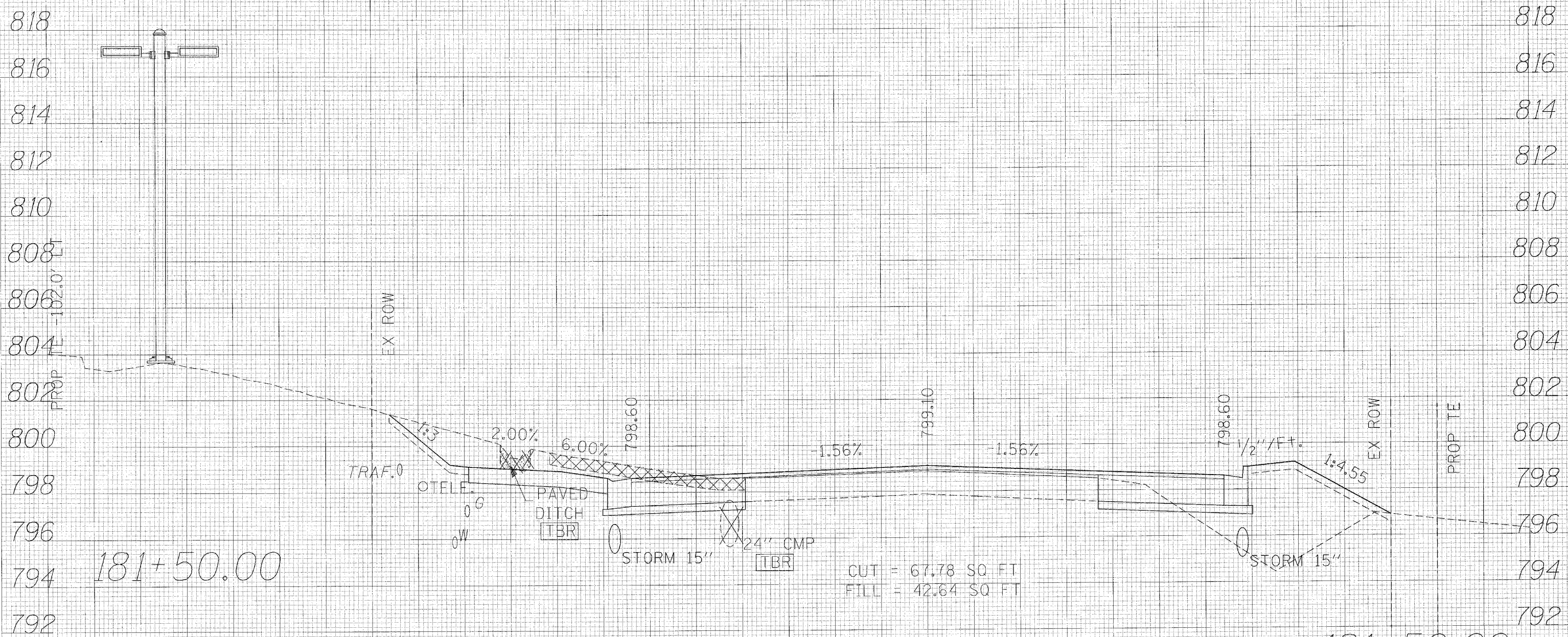
PROJECT	FAU 6584
DESIGNED BY	RB
DRAWN BY	AMPH
CHECKED BY	RB

RANDOLPH & ASSOCIATES, INC.
CONSULTING ENGINEERS & SURVEYORS
136.15
February 2004

F.A.U. RTE.	SECTION	COUNTY	TOTAL SHEETS	SHEET NO.
6584	105R-1	PEORIA	115	70
STA.		TO STA.		
FED. ROAD DIST. NO. 4 ILLINOIS FED. AID PROJECT				

DATE	
BY	
FILED	
NO. OF BOOK	
NO.	

DATE	
BY	
ORIGINAL SURVEY	
NO. OF BOOK	
NO.	



181+50.00

CUT = 67.78 SQ FT
FILL = 42.64 SQ FT

181+50.00

