

PROJECT ENGINEER: M. ADDIS 309-671-3454

PROJECT ENGINEER: M. ADDIS 309-671-3454

DESIGNER: R. SAMARA 309-671-3473

DESIGNER: R. SAMARA 309-671-3473

INDEX OF SHEETS

- 1. COVER SHEET
- 2-4. GENERAL NOTES
- 5. SUMMARY OF QUANTITIES
- 6. LINE DIAGRAM
- 7-11. TYPICAL SECTIONS
- 12-14. SCHEDULE OF QUANTITIES
- 15. TABULATION OF RESURFACING QUANTITIES
- 16-27. PAVEMENT MARKING DETAILS
- 28. BUTT JOINT DETAILS
- 28A-C CADD STANDARDS

LIST OF STANDARDS

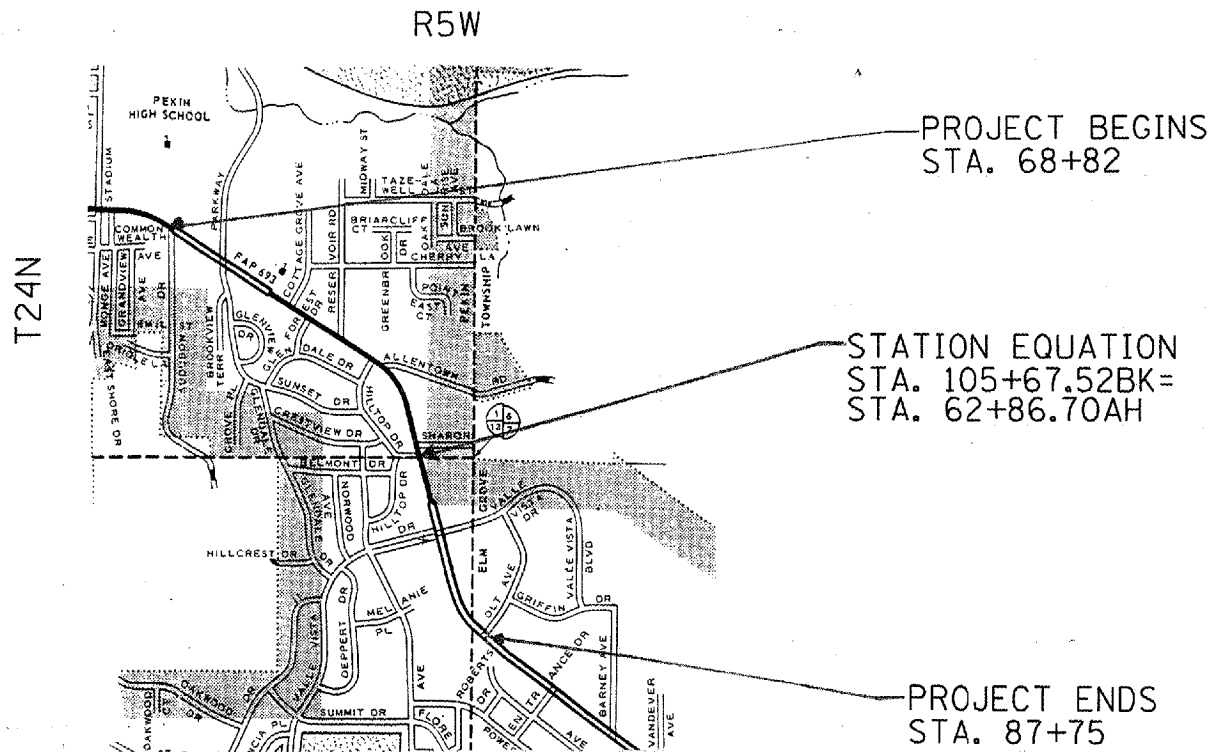
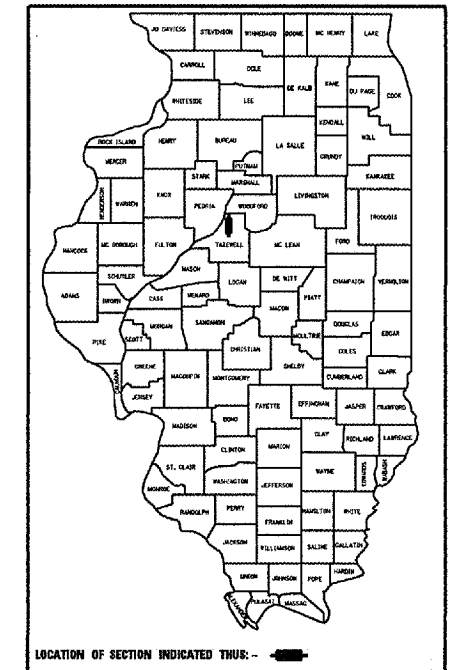
- | | |
|-----------|-----------|
| 442201-01 | 701602-02 |
| 701101-01 | 702001-06 |
| 701106-01 | 780001-01 |
| 701426-02 | 781001-02 |

- IL 29 (COURT ST.)
- ADT = 24716 (2004)
- MU = 1.9% (2004)
- SU = 2.1% (2004)

STATE OF ILLINOIS
DEPARTMENT OF TRANSPORTATION
DIVISION OF HIGHWAYS
FAPROUTE 693 (IL 9)
SECTION 15RS-4, 118 RS-6
PROJECT F-0693 (056)
TAZEWELL COUNTY
C-94-014-04

F. A. RTE.	SECTION	COUNTY	TOTAL SHEETS	SHEET NO
693	15 RS-2, 118 RS-4	TAZEWELL	28+31	1

CONTRACT NO. 68375



JOB DESCRIPTION

PATCHING, COLD MILLING & RESURFACING ON IL 9 (COURT STREET) FROM AUDUBON DRIVE TO OLT AVENUE IN THE CITY OF PEKIN.

CATALOG NO. 032829-00D
 CONTRACT NO. 68375

GROSS LENGTH OF IMPROVEMENT = 6,174 FEET = 1.2 MILES
 NET LENGTH OF IMPROVEMENT = 6,174 FEET = 1.2 MILES

STATE OF ILLINOIS
DEPARTMENT OF TRANSPORTATION
DIVISION OF HIGHWAYS

SUBMITTED March 31, 2006
 [Signature]
 DEPUTY DIRECTOR OF HIGHWAYS, REGION ENGINEER

May 12, 2006
 [Signature]
 ENGINEER OF DESIGN AND ENVIRONMENT

May 12, 2006
 [Signature]
 DIRECTOR OF HIGHWAYS, CHIEF ENGINEER

PRINTED BY THE AUTHORITY
 OF THE STATE OF ILLINOIS

QC/QA BITUMINOUS SUPERPAVE

J.U.L.I.E.
 JOINT UTILITY LOCATION INFORMATION FOR EXCAVATION
 1-800-892-0123