

PROJECT ENGINEER: M. ADDIS 309-671-3454

PROJECT ENGINEER: M. ADDIS 309-671-3454

DESIGNER: R. SAMARA 309-671-3473

DESIGNER: R. SAMARA 309-671-3473

### INDEX OF SHEETS

- 1. COVER SHEET
- 2-4. GENERAL NOTES
- 5. SUMMARY OF QUANTITIES
- 6. LINE DIAGRAM
- 7-11. TYPICAL SECTIONS
- 12-14. SCHEDULE OF QUANTITIES
- 15. TABULATION OF RESURFACING QUANTITIES
- 16-27. PAVEMENT MARKING DETAILS
- 28. BUTT JOINT DETAILS
- 28A-C CADD STANDARDS

### LIST OF STANDARDS

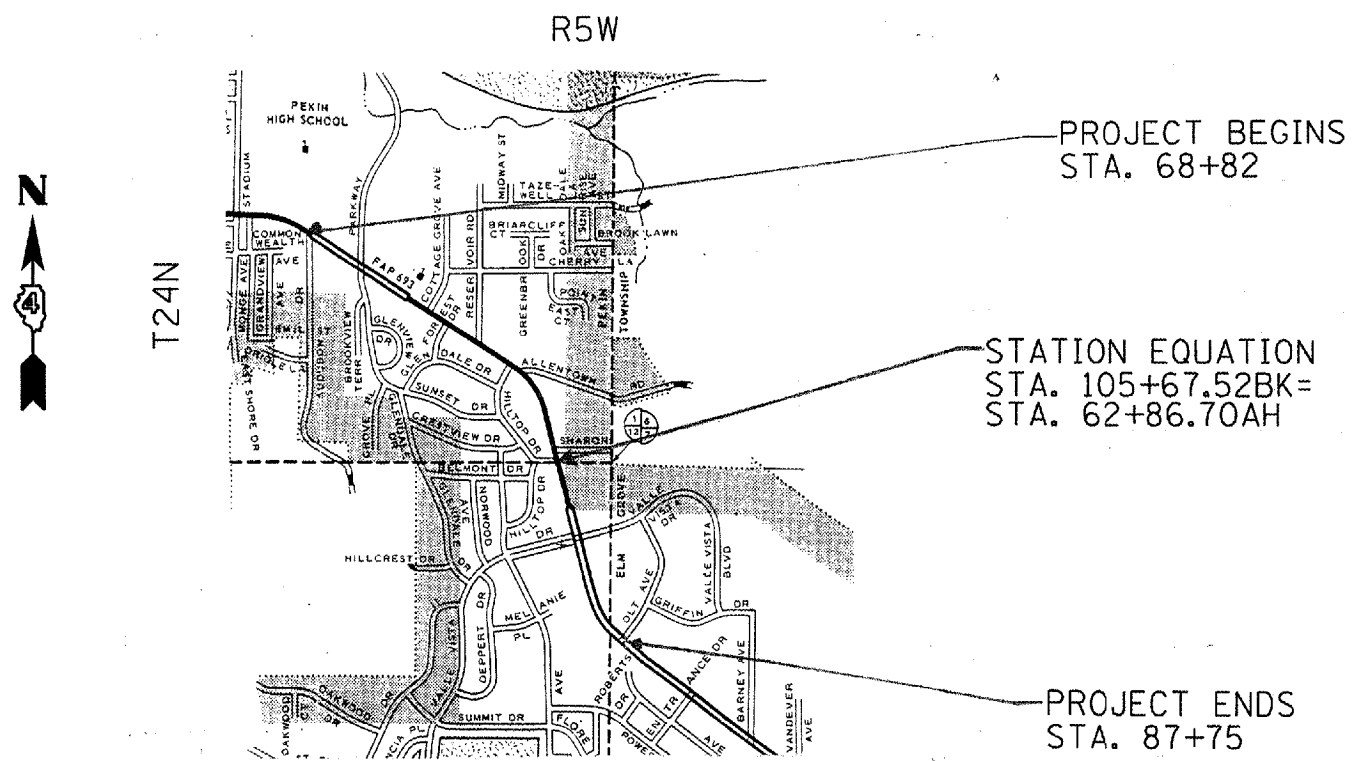
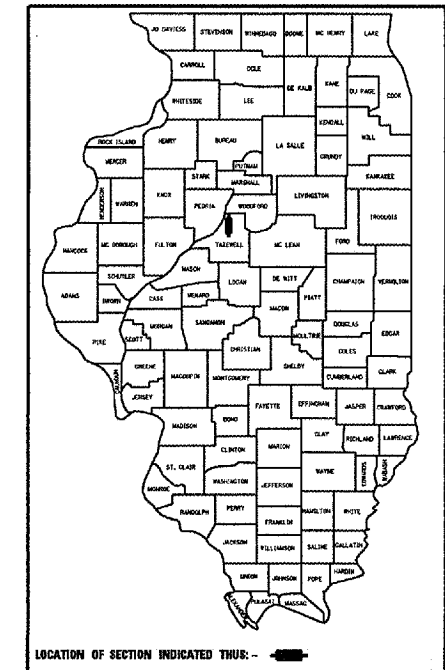
- |           |           |
|-----------|-----------|
| 442201-01 | 701602-02 |
| 701101-01 | 702001-06 |
| 701106-01 | 780001-01 |
| 701426-02 | 781001-02 |

- IL 29 (COURT ST.)
- ADT = 24716 (2004)
- MU = 1.9% (2004)
- SU = 2.1% (2004)

**STATE OF ILLINOIS**  
**DEPARTMENT OF TRANSPORTATION**  
**DIVISION OF HIGHWAYS**  
**FAPROUTE 693 (IL 9)**  
**SECTION 15RS-4, 118 RS-6**  
**PROJECT F-0693 (056)**  
**TAZEWELL COUNTY**  
**C-94-014-04**

F. A. RTE.	SECTION	COUNTY	TOTAL SHEETS	SHEET NO
693	15 RS-2, 118 RS-4	TAZEWELL	28+31	1

CONTRACT NO. 68375



**JOB DESCRIPTION**  
 PATCHING, COLD MILLING & RESURFACING ON IL 9 (COURT STREET) FROM AUDUBON DRIVE TO OLT AVENUE IN THE CITY OF PEKIN.

CATALOG NO. 032829-00D  
 CONTRACT NO. 68375

GROSS LENGTH OF IMPROVEMENT = 6,174 FEET = 1.2 MILES  
 NET LENGTH OF IMPROVEMENT = 6,174 FEET = 1.2 MILES

**STATE OF ILLINOIS**  
**DEPARTMENT OF TRANSPORTATION**  
**DIVISION OF HIGHWAYS**

SUBMITTED March 31, 2006

[Signature]  
 DEPUTY DIRECTOR OF HIGHWAYS, REGION ENGINEER

May 12, 2006  
[Signature]  
 ENGINEER OF DESIGN AND ENVIRONMENT

May 12, 2006  
[Signature]  
 DIRECTOR OF HIGHWAYS, CHIEF ENGINEER

PRINTED BY THE AUTHORITY  
 OF THE STATE OF ILLINOIS

QC/QA BITUMINOUS SUPERPAVE

J.U.I.E.  
 JOINT UTILITY LOCATION INFORMATION FOR EXCAVATION  
 1-800-892-0123

F. A. RTE.	SECTION	COUNTY	TOTAL SHEETS	SHEET NO
693	15 RS-2, 118 RS-4	TAZEWELL	28	2

CONTRACT NO. 68375

PAVEMENT STATION NUMBERS & PLACEMENT

The contractor shall provide labor to imprint pavement station numbers in the finished surface of the pavement and/or overlay. The numbers shall be approximately 3/4 inch wide, 5 inches high, and 5/8 inch deep.

The pavement station numbers shall be installed as specified herein,  
Interval - 200 feet (English stationing)  
Bottom of numbers - 6 inches from the inside edge of GENERAL DETAILS  
Location:

- 2, 3, & 5 lane pavements - right edge of pavement in direction of increasing stations.
- Multi-lane divided roadways - outside edge of pavement in both directions.
- Ramps - along baseline edge of pavement

Position - stations shall be placed so they can be read from the adjacent shoulder.

Format - English pavement stations shall use the format "xx + xx" where "x" represents the pavement station.

This work will not be paid for separately, but will be considered included in the cost of the associated pavement and/or overlay pay items.

ENVIRONMENTAL REVIEWS

Prior to the use of any proposed borrow areas, use areas (temporary access roads, detours, run-arounds, etc.) and/or waste areas, the Contractor, shall file the required environmental resource reviews according to Section 107.22 of the Standard Specifications in order for the Department to conduct cultural and biological resource surveys for the proposed site.

Prior to any waste materials produced from construction activities being disposed of off the right-of-way, the required environmental resource surveys will need to be obtained and filled by the Contractor. Excess waste products disposed of off the right-of-way shall be completed in accordance with the second paragraph of Section 202.3 of the Standard Specifications. Such disposal sites shall be able to support vegetation within 30 days of completion.

Any protruding metal bars shall be removed prior to the disposal of broken concrete at approved disposal sites.

The required environmental resource documentation shall include the following:

- BDE Form 2289 (Environmental Survey Request)
- A location map showing the size limits and location of the use area
- Signed property owner agreement form
- Color photographs depicting the use area

The Contractor shall be required to allow the Department a minimum of two weeks to obtain the environmental clearances for these sites.

ILLINOIS DEPARTMENT OF TRANSPORTATION

GENERAL NOTES

F. A. RTE.	SECTION	COUNTY	TOTAL SHEETS	SHEET NO
693	15 RS-2, 118 RS-4	TAZEWELL	28	3

CONTRACT NO. 68375

PROPERTY OWNER ACCESS REQUIREMENTS

Access must be maintained to all existing properties during construction per Article 107.09 unless arrangements are made in writing by the Contractor with the property owners with a copy to the Engineer for short-term closures.

AVAILABILITY OF ELECTRONIC FILES

Micro Station and GEOPAK files of this project will be made available to the Contractor. If there is a conflict between the electronic files and the printed contract plans and documents, the printed contract plans and documents shall take precedence over the electronic files. The Contractor shall accept all risk associated with using the electronic files and shall hold the Department harmless for any errors or omissions in the electronic files and the data contained therein. Errors or delays resulting from the use of the electronic files by the Contractor shall not result in an extension of time for any interim or final completion date or shall not be considered cause for additional compensation. The Contractor shall not use, share, or distribute these electronic files except for the purpose of constructing this contract. Any claims by third parties due to use or errors shall be the responsibility of the Contractor. The Contractor shall include this disclaimer with the transfer of these electronic files to any other parties and shall include appropriate language binding them to similar responsibilities.

ILLINOIS DEPARTMENT OF TRANSPORTATION

GENERAL NOTES

F. A. RTE.	SECTION	COUNTY	TOTAL SHEETS	SHEET NO
693	15 RS-2, 118 RS-4	TAZEWELL	28	4

ENGINEERS FIELD OFFICE

Add the following sentence to the end of paragraph 670.02 (i) and 670.04 (e):  
All of the telephone lines provided shall have unpublished numbers.

CONTRACT NO. 68375

BITUMINOUS CONCRETE MIXTURE REQUIREMENTS

Mixture Use(s):	POLYMERIZED SURFACE CSE SUPERPAVE	PATCHING
AC/PG:	SBS OR SBR PG 70-22	PG 64-22
RAP % (Max.):**	0	25%
Design Air Voids:	4.2% @ N=70	4.2% @ N=70
Mixture Composition: (Gradation Mixture)	IL-12.5 OR IL-9.5	IL 19.0
Friction Aggregate:	MIXTURE E	N/A

\*\* If the RAP is selected, the asphalt cement grade may need to be adjusted; this will be determined by the Engineer

PAVING SURFACE COURSE

Continuous paving operations on the main roadway shall be maintained at all times during the construction of the bituminous surface. No interruptions for side roads, entrances, turn lanes, etc. will be allowed

JOB SPECIFIC NOTES

Milling at the gutter may vary 1 1/2" to 3" +/- . This shall be paid for as "Bituminous Surface Removal 2".

COMMITMENTS

NO COMMITMENTS HAVE BEEN MADE FOR THIS PROJECT

ILLINOIS DEPARTMENT OF TRANSPORTATION

GENERAL NOTES

80% FED  
20% STATE

80% FED  
20% STATE

CONTRACT NO. 68375

ILLINOIS DEPARTMENT OF TRANSPORTATION

# SUMMARY OF QUANTITIES

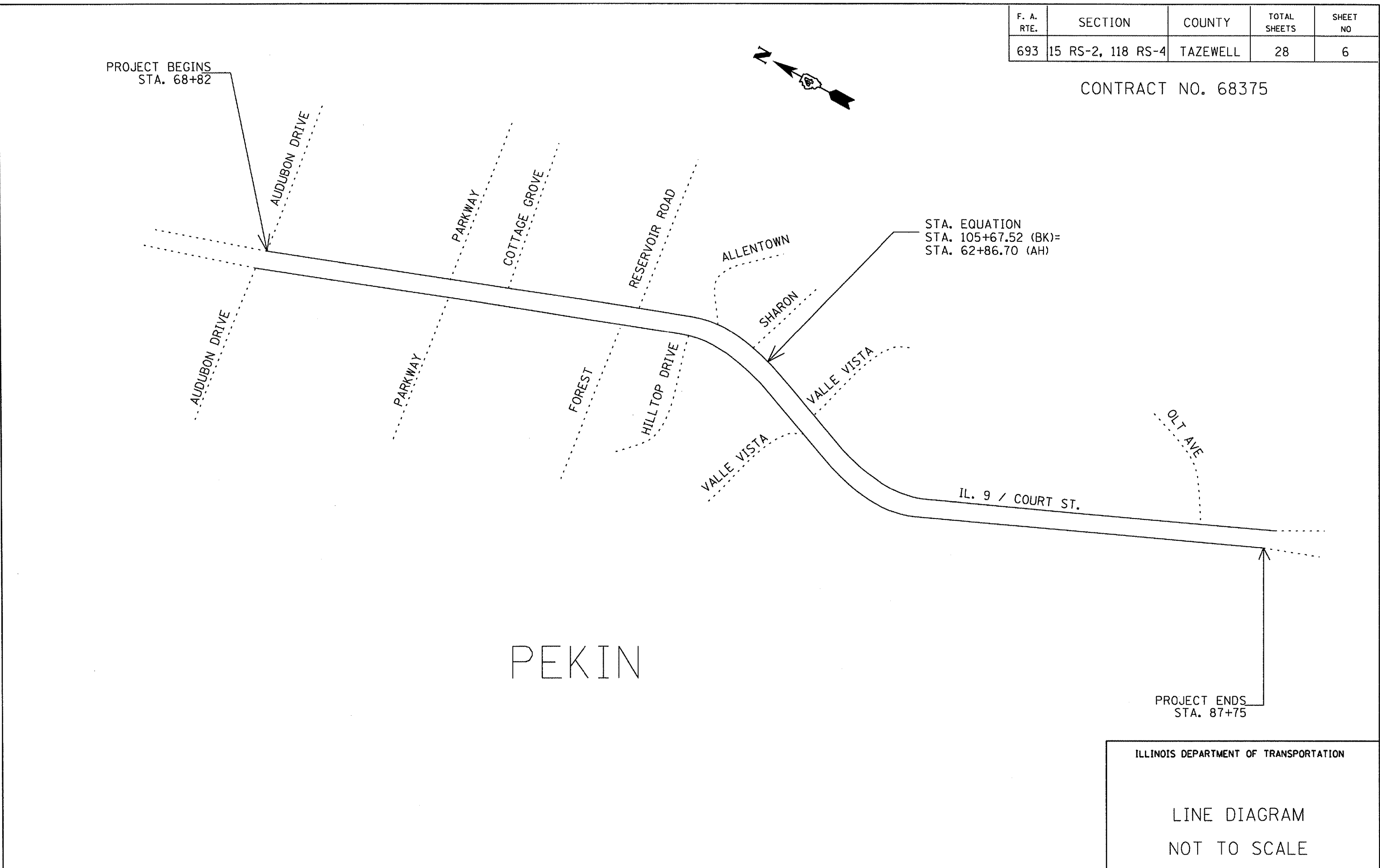
P. A. & A. E. NO.	SECTION	COUNTY	TOTAL SHEETS	SHEET NO.
693	1585-4-11885	TAZEWELL	28	5
STA.	TO STA.			
FED. ROAD DIST. NO. 1	ALIGNMENT	FED. AID PROJECT		

SUMMARY OF QUANTITIES			TOTAL QUANTITIES	CONSTRUCTION TYPE CODE		
CODE NO	ITEM	UNIT		1000 TAZEWELL URBAN	-----	-----
40600200	BITUMINOUS MATERIALS (PRIME COAT)	TON	17	17		
40600300	AGGREGATE (PRIME COAT)	TON	81	81		
40600895	CONSTRUCTING TEST STRIP	EACH	1	1		
40600980	BITUMINOUS SURFACE REMOVAL - BUTT JOINT	SO YD	211	211		
40600990	TEMPORARY RAMP	SO YD	168	168		
44000007	BITUMINOUS SURFACE REMOVAL 2"	SO YD	40213	40213		
44201815	CLASS D PATCHES, TYPE II, 14 INCH	SO YD	1136	1136		
67000400	ENGINEER'S FIELD OFFICE, TYPE A	CAL MO	2	2		
67100100	MOBILIZATION	L SUM	1	1		
70102632	TRAFFIC CONTROL & PROTECTION, STANDARD 701602	L SUM	1	1		
70300100	SHORT-TERM PAVEMENT MARKING	FOOT	4594	4594		
70300210	TEMPORARY PAVEMENT MARKING - LETTERS AND SYMBOLS	SO FT	957	957		
70300220	TEMPORARY PAVEMENT MARKING - LINE 4"	FOOT	15923	15923		
70300240	TEMPORARY PAVEMENT MARKING - LINE 6"	FOOT	2912	2912		
70300250	TEMPORARY PAVEMENT MARKING - LINE 8"	FOOT	2096	2096		
70300260	TEMPORARY PAVEMENT MARKING - LINE 12"	FOOT	430	430		
70300280	TEMPORARY PAVEMENT MARKING - LINE 24"	FOOT	209	209		
70301000	WORK ZONE PAVEMENT MARKING REMOVAL	SO FT	766	766		
78003130	PREFORMED PLASTIC PAVEMENT MARKING, TYPE B - LINE 6"	FOOT	2912	2912		
* 78008200	POLYUREA PAVEMENT MARKING TYPE1 - LETTERS & SYMBOLS	SO FT	957	957		
* 78008210	POLYUREA PAVEMENT MARKING TYPE 1 - LINE 4"	FOOT	15923	15923		
* 78008240	POLYUREA PAVEMENT MARKING TYPE1 - LINE 8"	FOOT	2096	2096		
* 78008250	POLYUREA PAVEMENT MARKING TYPE1 - LINE 12"	FOOT	430	430		
* 78008270	POLYUREA PAVEMENT MARKING TYPE1 - LINE 24"	FOOT	209	209		
* 78100100	RAISED REFLECTIVE PAVEMENT MARKER	EACH	406	406		
78300200	RAISED REFLECTIVE PAVEMENT MARKER REMOVAL	EACH	406	406		

SUMMARY OF QUANTITIES			TOTAL QUANTITIES	CONSTRUCTION TYPE CODE		
CODE NO	ITEM	UNIT		1000 TAZEWELL URBAN	-----	-----
X4066536	POLYMERIZED BITUMINOUS CONCRETE SURFACE COURSE, SUPERPAVE, MIX "E", N70	TON	4519	4519		
X7015000	CHANGEABLE MESSAGE SIGN	CAL MO	2	2		

F. A. RTE.	SECTION	COUNTY	TOTAL SHEETS	SHEET NO
693	15 RS-2, 118 RS-4	TAZEWELL	28	6

CONTRACT NO. 68375

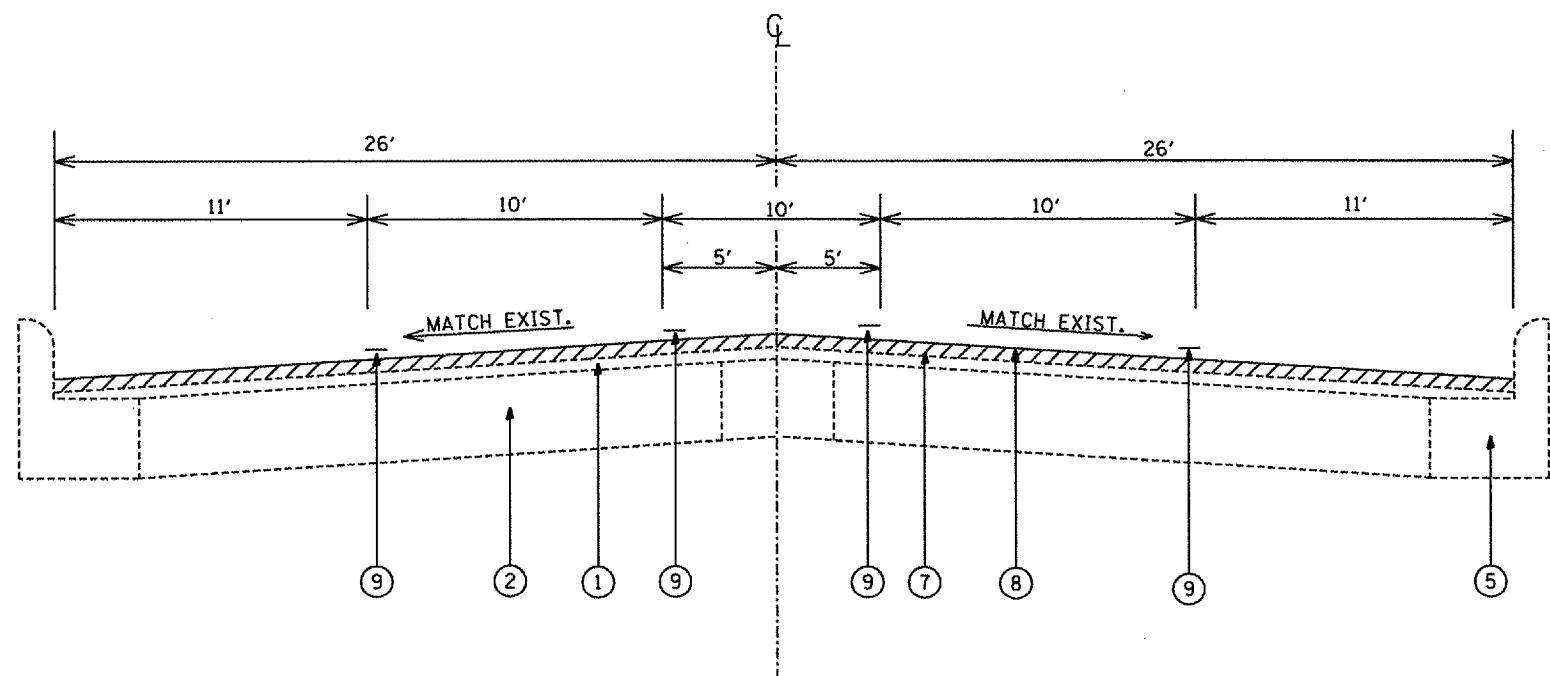


ILLINOIS DEPARTMENT OF TRANSPORTATION

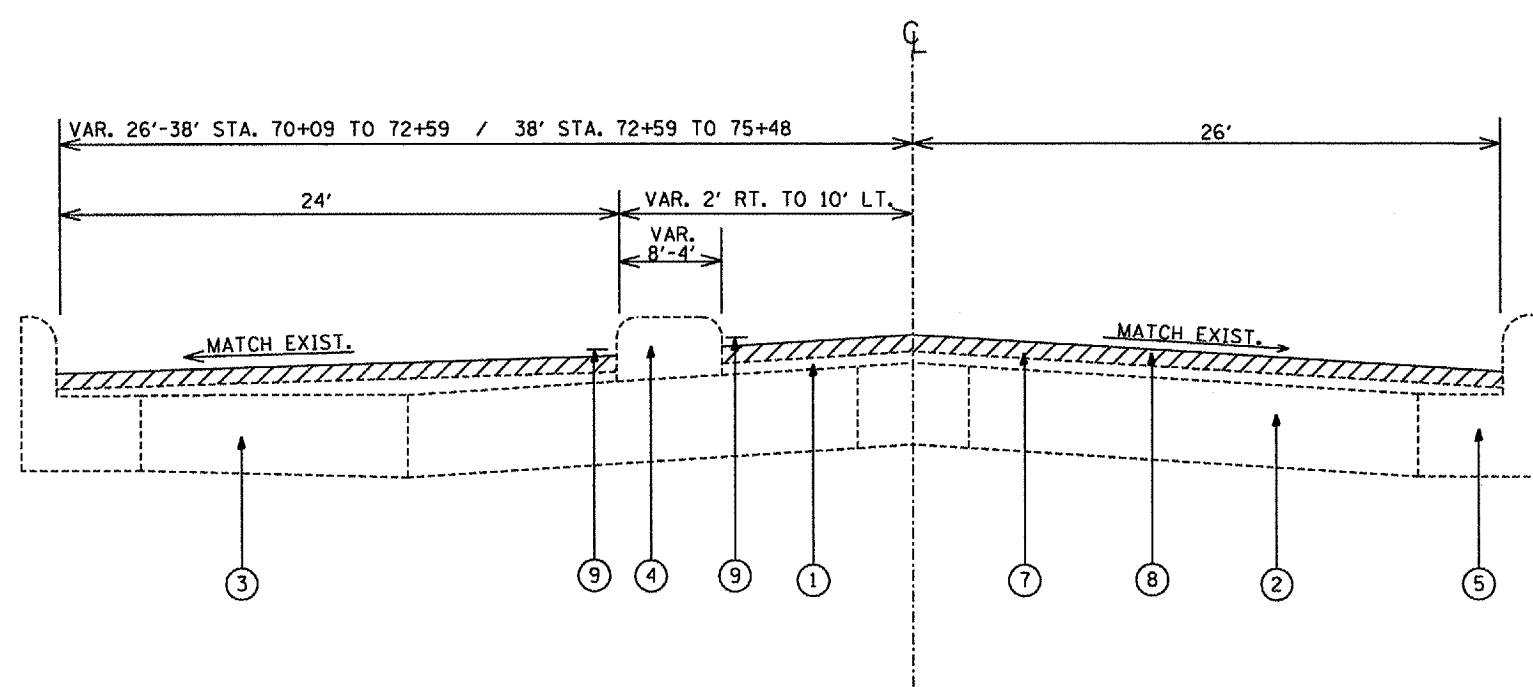
LINE DIAGRAM  
NOT TO SCALE

F. A. RTE.	SECTION	COUNTY	TOTAL SHEETS	SHEET NO
693	15 RS-2, 118 RS-4	TAZEWELL	28	7

CONTRACT NO. 68375



STA. 68+82(BK) TO STA. 70+09(BK)  
 STA. 80+23(BK) TO STA. 93+25(BK)



STA. 70+09(BK) TO STA. 75+48(BK)

LEGEND

- ① EXISTING BITUMINOUS OVERLAY
- ② EXISTING P.C.C. PAVEMENT, 10"
- ③ EXISTING P.C.C. BASE COURSE 9"
- ④ EXISTING P.C.C. MEDIAN
- ⑤ EXISTING COMB. CONC. CURB & GUTTER
- ⑥ EXISTING STABILIZED SHOULDER
- ⑦ PROPOSED BIT. SURF. REMOVAL, 2"
- ⑧ PROPOSED POLY BIT. SURF. CSE. SUPER. N70 2"
- ⑨ PROPOSED PAVEMENT MARKING LINE

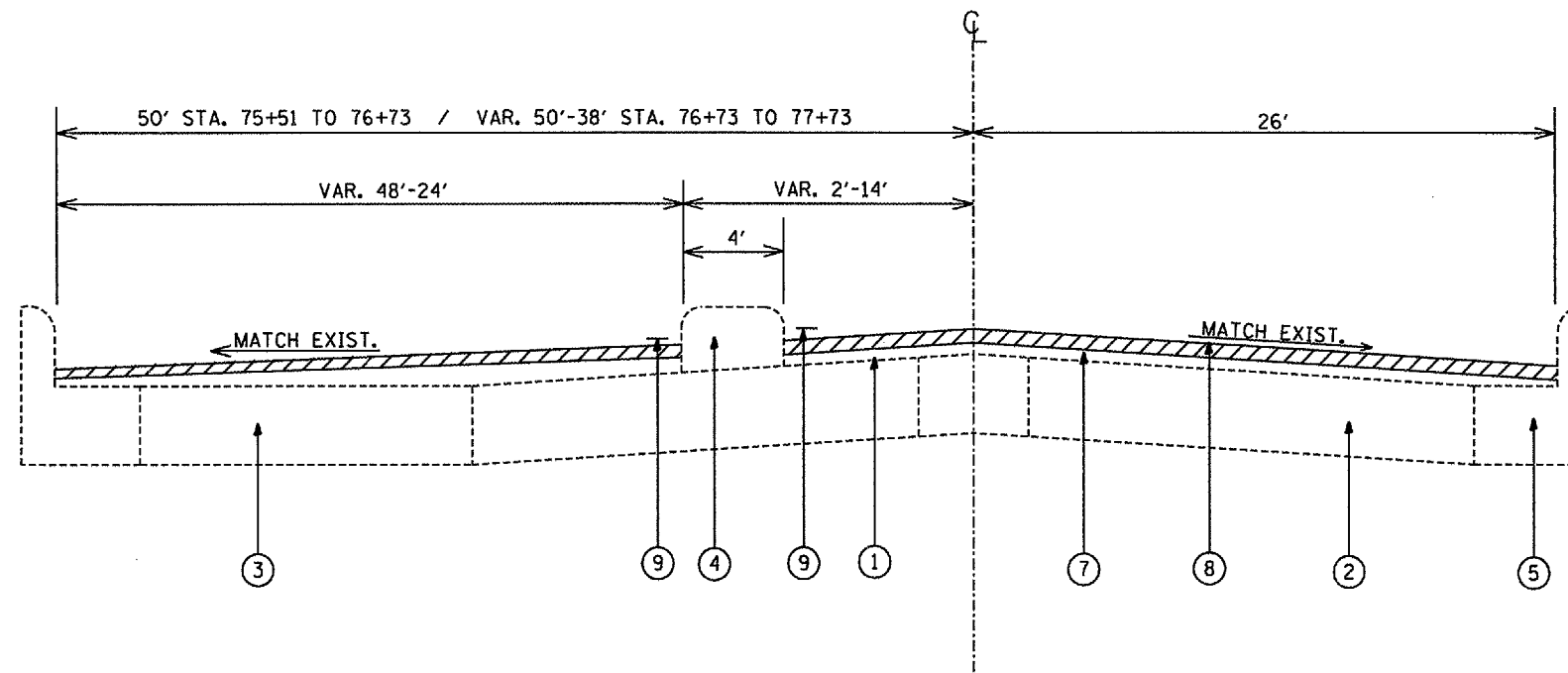
ILLINOIS DEPARTMENT OF TRANSPORTATION

PROPOSED  
TYPICAL SECTION

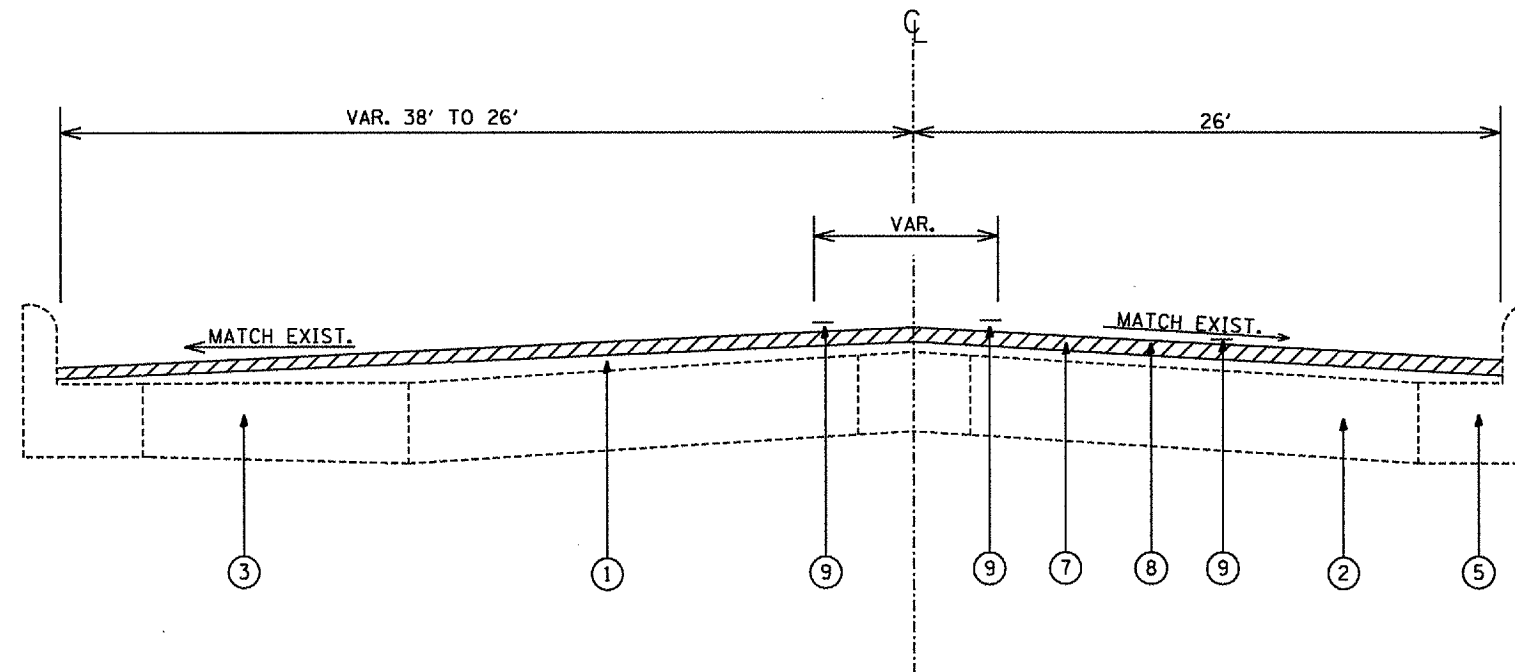
NOT TO SCALE

F. A. RTE.	SECTION	COUNTY	TOTAL SHEETS	SHEET NO
693	15 RS-2, 118 RS-4	TAZEWELL	28	8

CONTRACT NO. 68375



STA. 75+48(BK) TO STA. 77+73(BK)



STA. 77+73(BK) TO STA. 80+23(BK)

LEGEND

- ① EXISTING BITUMINOUS OVERLAY
- ② EXISTING P.C.C. PAVEMENT, 10"
- ③ EXISTING P.C.C. BASE COURSE 9"
- ④ EXISTING P.C.C. MEDIAN
- ⑤ EXISTING COMB. CONC. CURB & GUTTER
- ⑥ EXISTING STABILIZED SHOULDER
- ⑦ PROPOSED BIT. SURF. REMOVAL, 2"
- ⑧ PROPOSED POLY BIT. SURF. CSE. SUPER. N70 2"
- ⑨ PROPOSED PAVEMENT MARKING LINE

ILLINOIS DEPARTMENT OF TRANSPORTATION

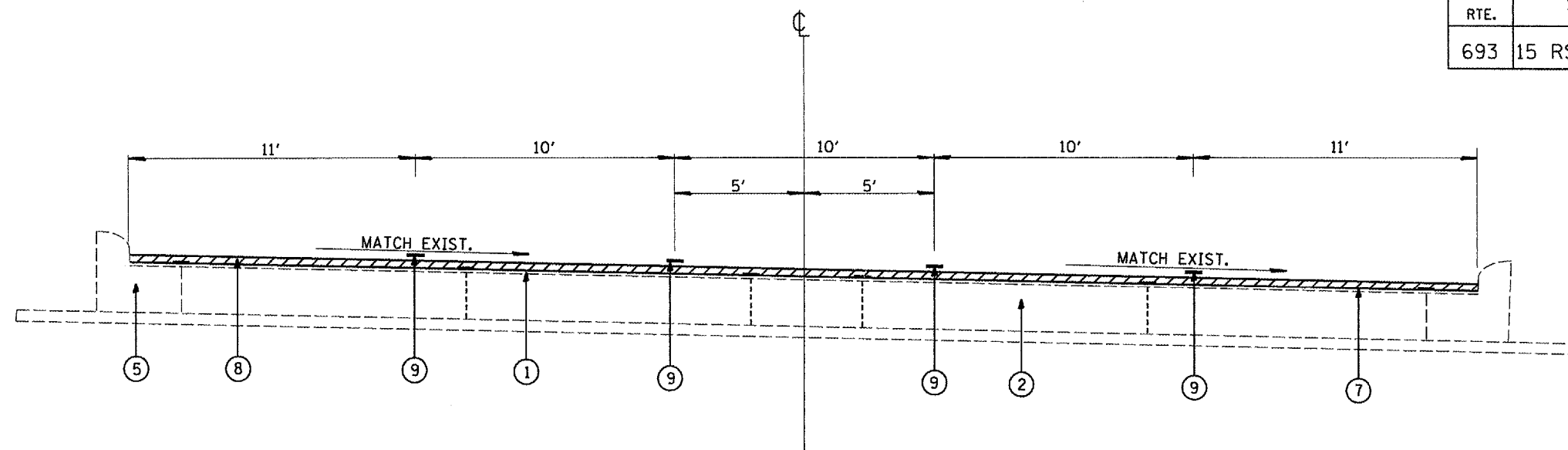
PROPOSED  
TYPICAL SECTION

NOT TO SCALE

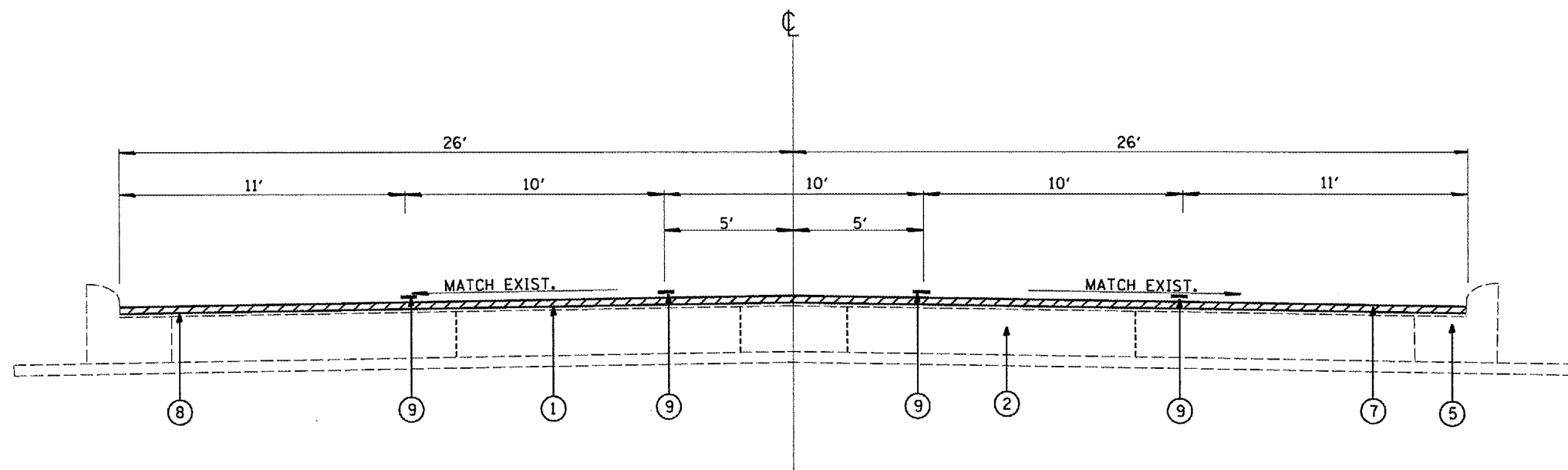


F. A. RTE.	SECTION	COUNTY	TOTAL SHEETS	SHEET NO
693	15 RS-2, 118 RS-4	TAZEWELL	28	9

CONTRACT NO. 68375



STA. 93+25(BK) TO STA. 100+48(BK)



STA. 100+48(BK) TO STA. 64+75(AH)  
 STA. EQUATION: STA. 105+67.5 (BK) = STA. 62+86.7 (AH)

LEGEND

- ① EXISTING BITUMINOUS OVERLAY
- ② EXISTING P.C.C. PAVEMENT, 10"
- ③ EXISTING P.C.C. BASE COURSE 9"
- ④ EXISTING P.C.C. MEDIAN
- ⑤ EXISTING COMB. CONC. CURB & GUTTER
- ⑥ EXISTING STABILIZED SHOULDER
- ⑦ PROPOSED BIT. SURF. REMOVAL, 2"
- ⑧ PROPOSED POLY BIT. SURF. CSE. SUPER. N70 2"
- ⑨ PROPOSED PAVEMENT MARKING LINE

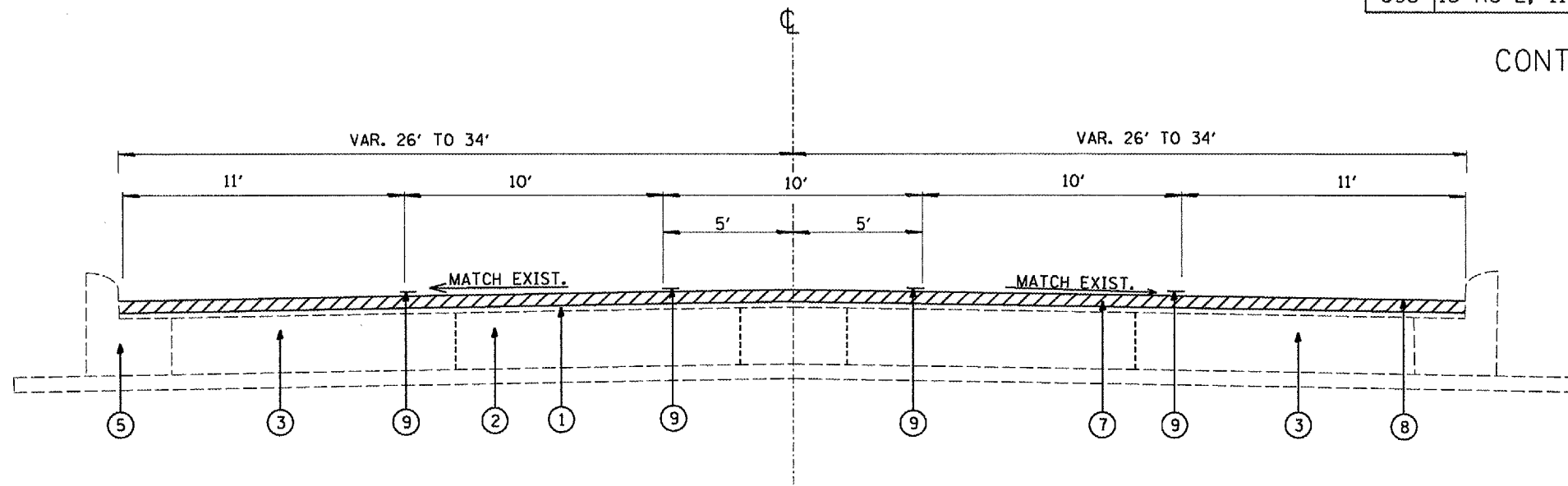
ILLINOIS DEPARTMENT OF TRANSPORTATION

PROPOSED  
TYPICAL SECTION

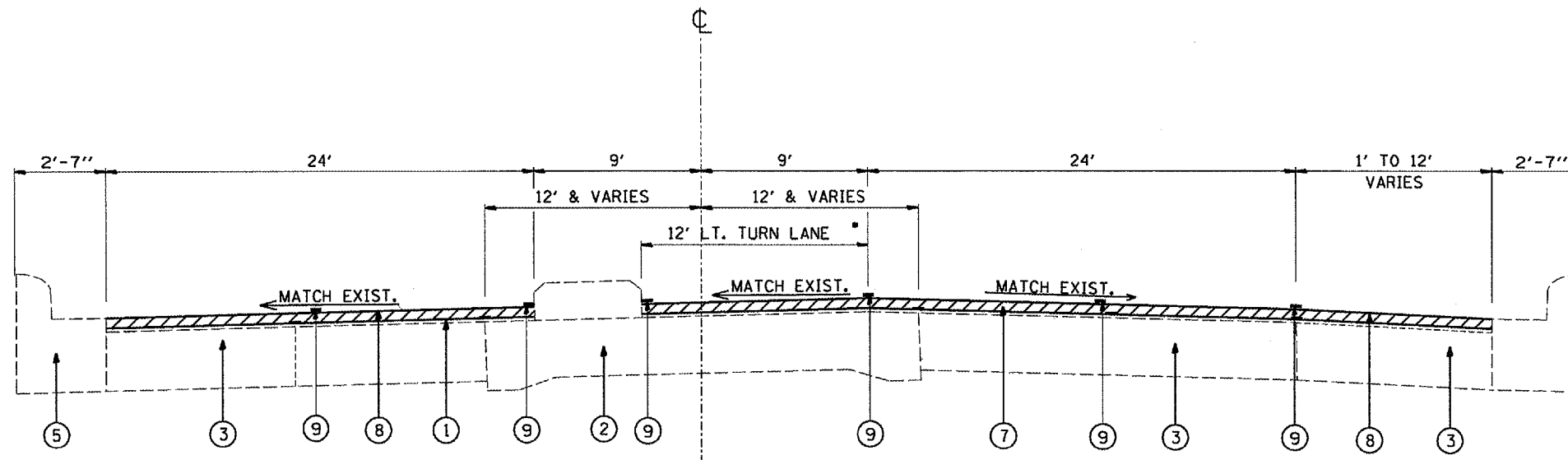
NOT TO SCALE

F. A. RTE.	SECTION	COUNTY	TOTAL SHEETS	SHEET NO
693	15 RS-2, 118 RS-4	TAZEWELL	28	10

CONTRACT NO. 68375



STA. 64+75(AH) TO STA. 67+23(AH)



STA. 67+23(AH) TO STA. 71+74(AH)

\* CONC. MEDIAN W/LEFT TURN LANE  
STA. 68+59(AH) TO STA. 70+46(AH)

LEGEND

- ① EXISTING BITUMINOUS OVERLAY
- ② EXISTING P.C.C. PAVEMENT, 10"
- ③ EXISTING P.C.C. BASE COURSE 9"
- ④ EXISTING P.C.C. MEDIAN
- ⑤ EXISTING COMB. CONC. CURB & GUTTER
- ⑥ EXISTING STABILIZED SHOULDER
- ⑦ PROPOSED BIT. SURF. REMOVAL, 2"
- ⑧ PROPOSED POLY BIT. SURF. CSE. SUPER. N70 2"
- ⑨ PROPOSED PAVEMENT MARKING LINE

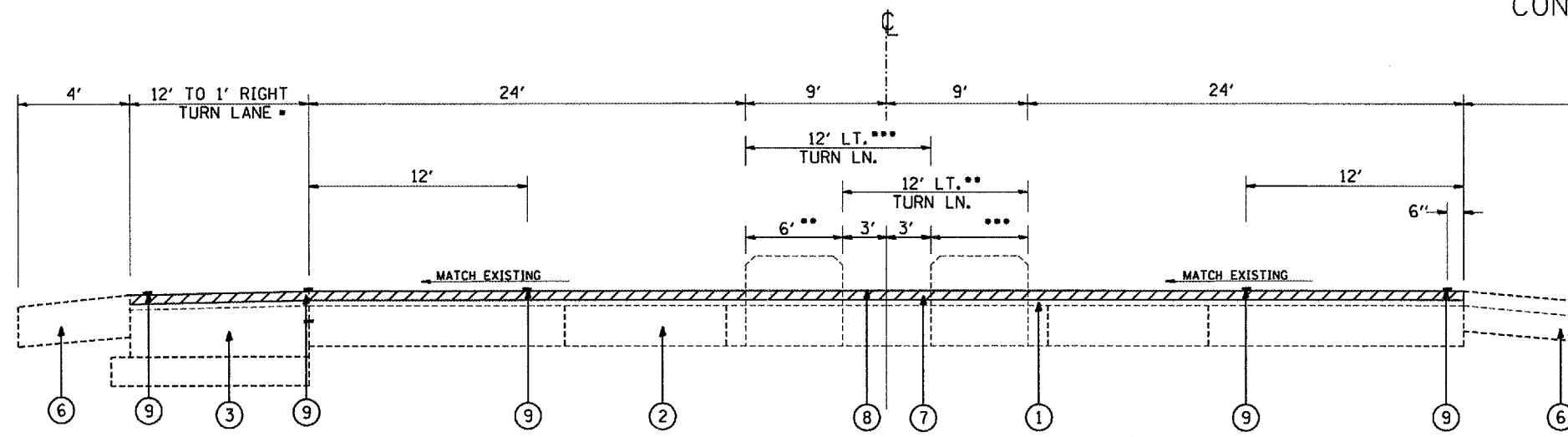
ILLINOIS DEPARTMENT OF TRANSPORTATION

PROPOSED  
TYPICAL SECTION

NOT TO SCALE

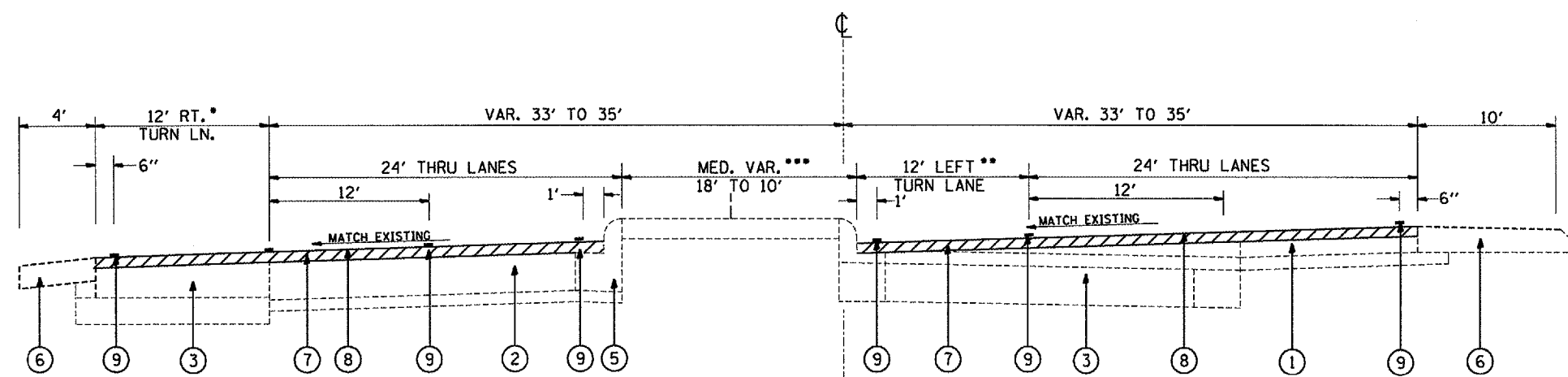
F. A. RTE.	SECTION	COUNTY	TOTAL SHEETS	SHEET NO
693	15 RS-2, 118 RS-4	TAZEWELL	28	11

CONTRACT NO. 68375



STA. 71+74(AH) TO STA. 79+87(AH)

- RT. TURN LANE LT. STA. 71+80.6(AH) TO 74+96(AH)
- \*\* 6' MED. AND LT. TURN LANE STA. 74+30(AH) TO 75+25(AH) & STA. 77+62(AH) TO 79+12(AH)
- \*\*\* 6' MED. AND LT. TURN LANE STA. 71+73.6(AH) TO 74+30(AH) & STA. 76+37(AH) TO 77+62(AH)



STA. 79+87(AH) TO STA. 87+75(AH)

- STA. 84+04(AH) TO 87+35(AH)
- \*\* STA. 80+40(AH) TO 82+80(AH) AND STA. 85+75(AH) TO 87+10(AH)
- \*\*\* EARTH MEDIAN STA. 79+87(AH) TO 80+40(AH) AND STA. 83+50(AH) TO 85+75(AH)  
CONC. MEDIAN STA. 80+40(AH) TO 83+50(AH) AND STA. 85+75(AH) TO 87+55(AH)

LEGEND

- ① EXISTING BITUMINOUS OVERLAY
- ② EXISTING P.C.C. PAVEMENT, 10"
- ③ EXISTING P.C.C. BASE COURSE 9"
- ④ EXISTING P.C.C. MEDIAN
- ⑤ EXISTING COMB. CONC. CURB & GUTTER
- ⑥ EXISTING STABILIZED SHOULDER
- ⑦ PROPOSED BIT. SURF. REMOVAL, 2"
- ⑧ PROPOSED POLY BIT. SURF. CSE. SUPER. N70 2"
- ⑨ PROPOSED PAVEMENT MARKING LINE

ILLINOIS DEPARTMENT OF TRANSPORTATION

PROPOSED  
TYPICAL SECTION

NOT TO SCALE

F. A. RTE.	SECTION	COUNTY	TOTAL SHEETS	SHEET NO
693	15 RS-2, 118 RS-4	TAZEWELL	28	12

CONTRACT NO. 68375

POLYUREA PAVEMENT MARKING TYPE I, PREFORMED PLASTIC, AND TEMPORARY PAVEMENT MARKINGS

LOCATION	POLYUREA	POLYUREA	PRF.PLSTC.	POLYUREA	POLYUREA	POLYUREA	POLYUREA
	SOLID WHITE	SOLID YELLOW	SKIP DASH WHITE	SOLID WHITE	SOLID DIAGONAL	SOLID WHITE	LETTERS & SYMBOLS
	4" FEET	4" FEET	6" FEET	8" FEET	12" FEET	24" FEET	SQ. FT.
STA. 68+82 TO 72+60		933	190		9		62.4
STA. 72+60 TO 74+79		310	106	180		35	31.2
STA. 74+79 TO 77+73		460	141	249		35	62.4
STA. 77+73 TO 81+00		1146	165		164		
STA. 81+00 TO 87+50		1596	320				124.8
STA. 87+50 TO 93+00		1260	280				62.4
STA. 93+00 TO 98+50		1046	220			69	93.6
STA. 98+50 TO 104+00		1380	280				93.6
STA. 104+00 TO 67+50 (AH)		1656	320		20		93.6
STA. 67+50 TO 74+00	157	1379	260	1028	237	70	140.4
STA. 74+00 TO 80+00	1104	826	300	187			98.8
STA. 80+00 TO 86+00	1010	1100	250	342			62.4
STA. 86+00 TO 87+75	310	250	80	110			31.2
TOTAL	2581	13342	2912	2096	430	209	957
GRAND TOTALS	15923		2912	2096	430	209	957

ILLINOIS DEPARTMENT OF TRANSPORTATION

SCHEDULE OF QUANTITIES

F. A. RTE.	SECTION	COUNTY	TOTAL SHEETS	SHEET NO
693	15 RS-2, 118 RS-4	TAZEWELL	28	13

CONTRACT NO. 68375

CONSTRUCTION TEST STRIP	
LOCATION	EACH
IL. 9 (COURT ST.)	1
TOTAL	1

TRAFFIC CONTROL AND PROTECTION STANDARD 701602	
LOCATION	LUMP SUM
IL. 9 (COURT ST.)	1
TOTAL	1

CHANGEABLE MESSAGE SIGN	
LOCATION	CAL DAY
IL. 9 (COURT ST.) 2 @ 30 DAYS EACH	60
TOTAL	60

ENGINEER'S FIELD OFFICE TYPE A	
LOCATION	CAL MONTH
IL. 9 (COURT ST.)	2
TOTAL	2

MOBILIZATION	
LOCATION	LUMP SUM
IL. 9 (COURT ST.)	1
TOTAL	1

RAISED REFLECTIVE PAVEMENT MARKER REMOVAL	
LOCATION	EACH
STA. 68+82 - 105+67.52 BK	277
STA. 62+86.7 (AH) - 87+75	129
TOTAL	406

WORKZONE PAVEMENT MARKING REMOVAL	
LOCATION	SQ FT
STA. 68+82 TO 105+67.52 BK	434
STA. 62+86.7 AH TO 87+75	332
TOTAL	766

SHORT TERM PAVEMENT MARKING	
LOCATION	FOOT
STA. 68+82 TO 105+67.52 BK	1301
STA. 62+86.7 AH TO 87+75	996
TOTAL PER APPLICATION	2297
GRAND TOTAL (2 APPLICATIONS)	4594

ILLINOIS DEPARTMENT OF TRANSPORTATION

SCHEDULE OF  
QUANTITIES

F. A. RTE.	SECTION	COUNTY	TOTAL SHEETS	SHEET NO
693	15 RS-2, 118 RS-4	TAZEWELL	28	14

CONTRACT NO. 68375

RAISED REFLECTIVE PAVEMENT MARKERS			
LOCATION	CRYSTAL ONE WAY	AMBER ONE WAY	AMBER TWO WAY
	EACH	EACH	EACH
STA. 68+82 TO 81+12	38	9	17
STA. 81+12 TO 87+50	16		32
STA. 87+50 TO 93+00	15		24
STA. 93+00 TO 98+50	14		24
STA. 98+50 TO 104+00	14		28
STA. 104+00 TO 67+50 (AH)	16		30
STA. 67+50 TO 74+00	27	28	
STA. 74+00 TO 80+00	8	20	
STA. 80+00 TO 86+00	10	28	
STA. 86+00 TO 87+75	4	4	
TOTAL	162	89	155
GRAND TOTAL	406		

BITUMINOUS SURFACE REMOVAL BUTT JOINT			
LOCATION	WIDTH	LENGTH	AREA
	FOOT	FOOT	SQ YD
STA. 68+82 TO 68+92	52	10	57.8
STA. 87+65 TO 87+75	68	10	75.6
TURN LANES			
LT. STA. 75+25 (PARKWAY)	14	10	15.6
RT. STA. 70+40 (VALLE VISTA)	16	10	17.8
LT. STA. 71+70 (VALLE VISTA)	16	10	17.8
RT. STA. 72+10 (VALLE VISTA)	10	10	11.1
LT. STA. 84+00 (OLT)	14	10	15.6
TOTAL			211

CLASS D PATCHES, TYPE II 14"	
LOCATION	SQ YD
EAST BOUND LANES	
STA. 68+82 TO 87+75	472
WEST BOUND LANES	
STA. 68+82 TO 87+75	357
MEDIAN	159
TOTAL	988
ADD 15% FOR WINTER BREAKUP	148
GRAND TOTAL	1136

TEMPORARY RAMP	
LOCATION	SQ YD
STA. 68+82 TO 68+87	28.9
STA. 87+70 TO 87+75	26.7
SIDE ROADS	112
TOTAL	168

ILLINOIS DEPARTMENT OF TRANSPORTATION

SCHEDULE OF QUANTITIES

F. A. RTE.	SECTION	COUNTY	TOTAL SHEETS	SHEET NO
693	15 RS-2, 118 RS-4	TAZEWELL	28	15

# SCHEDULE OF RESURFACING QUANTITIES

CONTRACT NO. 68375

LOCATION	LENGTH	WIDTH	AREA	BIT. SURFACE REMOVAL 2"	BIT. MATERIAL PRIME COAT	AGGREGATE PRIME COAT	PBCSC SUPER "E" N 70 2"
	FEET	FEET	SQ. YD.	SQ. YD.	TON	TON	TON
STA. 68+82 TO 70+20	138	52	797.3	739.5	0.32	1.60	89.3
STA. 70+20 TO 71+33	113	52-57	684.3	684.3	0.27	1.37	76.7
STA. 71+33 TO 72+60	127	57-63	846.7	846.7	0.34	1.69	94.8
STA. 72+60 TO 74+65	205	63	1435	1435	0.57	2.87	160.7
STA. 74+65 TO 75+51	86	63 & VAR.	749.5	749.5	0.30	1.50	84.0
STA. 75+51 TO 76+73	122	75	1016.7	1016.7	0.41	2.03	113.9
STA. 76+73 TO 77+73	100	75-63	766.7	766.7	0.31	1.53	85.9
STA. 77+73 TO 78+99	126	63-57	840	840	0.34	1.68	94.1
STA. 78+99 TO 80+23	124	57-52	750.9	750.9	0.30	1.50	84.1
STA. 80+23 TO 105+67.5 (BK)	2544	52	14698.7	14698.7	5.88	29.4	1646.3
STA. 62+86.7 (AH) TO 67+50	463	52-64	2983.8	2983.8	1.19	5.97	334.2
STA. 67+50 TO 71+80	430	64-86	3615	3615	1.45	7.23	404.9
STA. 71+80 TO 74+00	220	72	1760	1760	0.70	3.52	197.1
STA. 74+00 TO 80+00	600	76+65	4339	4339	1.74	8.68	486.0
STA. 80+00 TO 86+00	600	48-65	3780	3780	1.51	7.56	423.3
STA. 86+00 TO 87+75	175	60-72	1283	1207.4	0.51	2.57	143.7
GRAND TOTALS				40213.0	17.0	81.0	4519.0

SURFACE TYPE	BITUMINOUS (PRIME COAT)
COLD MILLED SURFACE	0.1 GAL./SQ. YD.
	0.004 TON/GAL.

SURFACE TYPE	AGGREGATE (PRIME COAT)	P BCSC SUPER "E" N70
COLD MILLED SURFACE	4 LB./SQ.YD.	112 LB./SQ.YD./IN.

ILLINOIS DEPARTMENT OF TRANSPORTATION

RESURFACING QUANTITIES

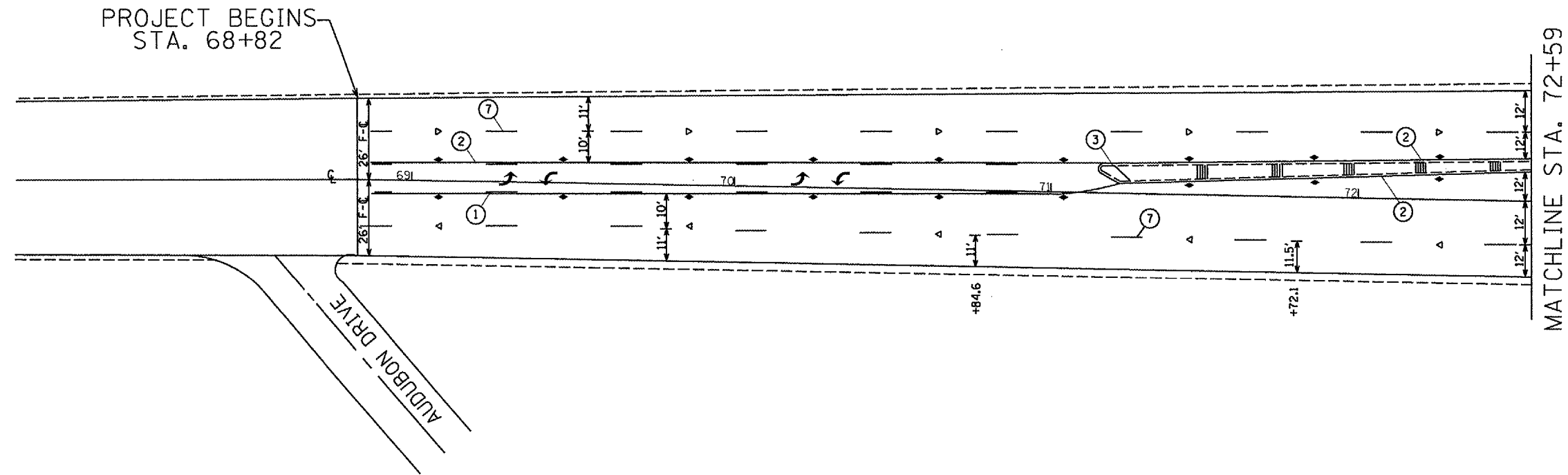
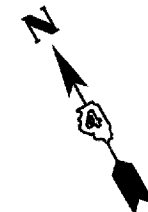
F. A. RTE.	SECTION	COUNTY	TOTAL SHEETS	SHEET NO
693	15 RS-2, 118 RS-4	TAZEWELL	28	16

CONTRACT NO. 68375

PAVEMENT MARKING LEGEND

- ① 4" SKIP-DASH (YELLOW)
- ② 4" SOLID (YELLOW)
- ③ 12" DIAGONAL (YELLOW)
- ④ 4" DOUBLE YELLOW (NARROW)
- ⑤ 4" DOUBLE YELLOW (WIDE)
- ⑥ LETTERS & SYMBOLS
- ⑦ 6" SKIP-DASH (WHITE)
- ⑧ 8" SOLID (WHITE)
- ⑨ 12" DIAGONAL (WHITE)
- ⑩ 6" CROSS WALK (WHITE)
- ⑪ 24" STOP BAR (WHITE)
- ⑫ 4" SOLID (WHITE)

SYMBOLS	
	TWO-WAY YELLOW RPM
	ONE-WAY YELLOW RPM
	ONE-WAY WHITE RPM
	TWO-WAY WHITE-RED RPM



NO IMPROVEMENT

ILLINOIS DEPARTMENT OF TRANSPORTATION  
 PROPOSED PAVEMENT MARKING  
 DETAIL  
 NOT TO SCALE DATE 9/1/2005



F. A. RTE.	SECTION	COUNTY	TOTAL SHEETS	SHEET NO
693	15 RS-2, 118 RS-4	TAZEWELL	28	17

CONTRACT NO. 68375

STA. 74+78.76 IL 9 (COURT ST.) =  
 STA. 4+64.59 PARKWAY DR.-SUNSET DR.

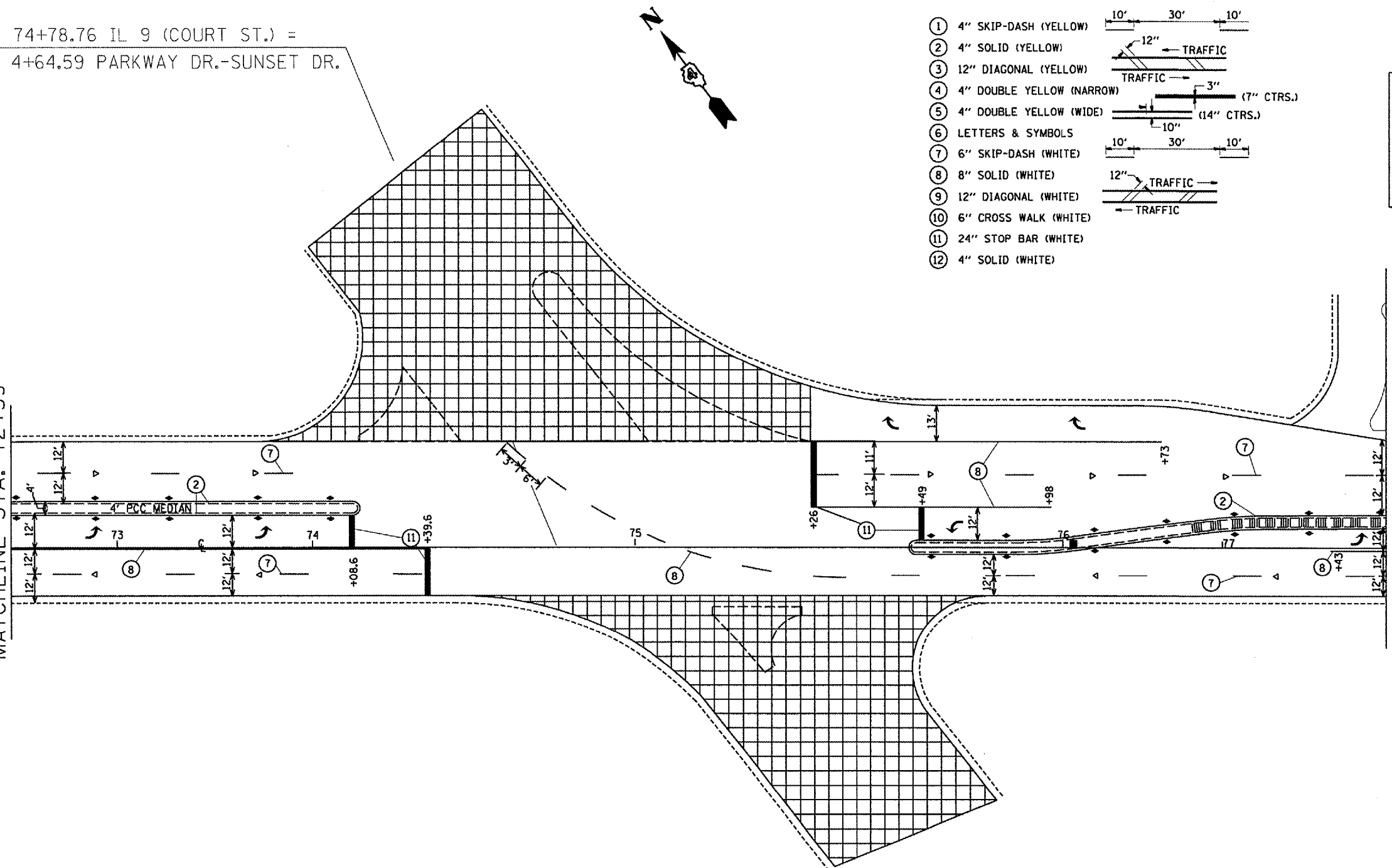
PAVEMENT MARKING LEGEND

- ① 4" SKIP-DASH (YELLOW)
- ② 4" SOLID (YELLOW)
- ③ 12" DIAGONAL (YELLOW)
- ④ 4" DOUBLE YELLOW (NARROW)
- ⑤ 4" DOUBLE YELLOW (WIDE)
- ⑥ LETTERS & SYMBOLS
- ⑦ 6" SKIP-DASH (WHITE)
- ⑧ 8" SOLID (WHITE)
- ⑨ 12" DIAGONAL (WHITE)
- ⑩ 6" CROSS WALK (WHITE)
- ⑪ 24" STOP BAR (WHITE)
- ⑫ 4" SOLID (WHITE)

SYMBOLS	
	TWO-WAY YELLOW RPM
	ONE-WAY YELLOW RPM
	ONE-WAY WHITE RPM
	TWO-WAY WHITE-RED RPM

MATCHLINE STA. 72+59

MATCHLINE STA. 77+73

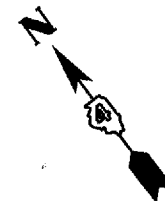


NO IMPROVEMENT

ILLINOIS DEPARTMENT OF TRANSPORTATION  
 PROPOSED PAVEMENT MARKING  
 DETAIL  
 NOT TO SCALE DATE 9/1/2005

F. A. RTE.	SECTION	COUNTY	TOTAL SHEETS	SHEET NO
693	15 RS-2, 118 RS-4	TAZEWELL	28	18

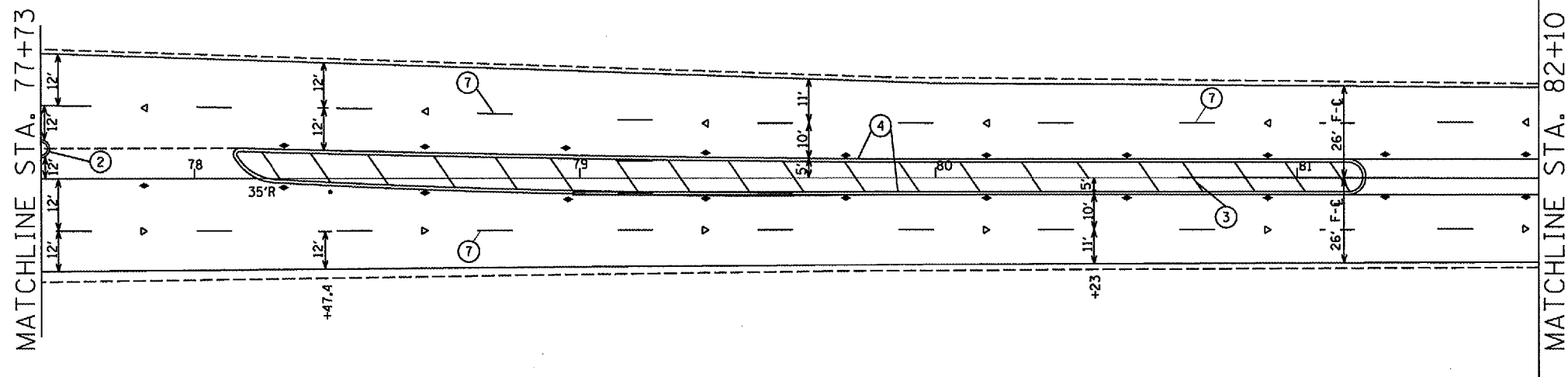
CONTRACT NO. 68375



PAVEMENT MARKING LEGEND

- ① 4" SKIP-DASH (YELLOW)
- ② 4" SOLID (YELLOW)
- ③ 12" DIAGONAL (YELLOW)
- ④ 4" DOUBLE YELLOW (NARROW)
- ⑤ 4" DOUBLE YELLOW (WIDE)
- ⑥ LETTERS & SYMBOLS
- ⑦ 6" SKIP-DASH (WHITE)
- ⑧ 8" SOLID (WHITE)
- ⑨ 12" DIAGONAL (WHITE)
- ⑩ 6" CROSS WALK (WHITE)
- ⑪ 24" STOP BAR (WHITE)
- ⑫ 4" SOLID (WHITE)

SYMBOLS	
	TWO-WAY YELLOW RPM
	ONE-WAY YELLOW RPM
	ONE-WAY WHITE RPM
	TWO-WAY WHITE-RED RPM



NO IMPROVEMENT

ILLINOIS DEPARTMENT OF TRANSPORTATION  
 PROPOSED PAVEMENT  
 MARKING  
 DETAIL

F. A. RTE.	SECTION	COUNTY	TOTAL SHEETS	SHEET NO
693	15 RS-2, 118 RS-4	TAZEWELL	28	19

CONTRACT NO. 68375



PAVEMENT MARKING LEGEND

- ① 4" SKIP-DASH (YELLOW)
- ② 4" SOLID (YELLOW)
- ③ 12" DIAGONAL (YELLOW)
- ④ 4" DOUBLE YELLOW (NARROW)
- ⑤ 4" DOUBLE YELLOW (WIDE)
- ⑥ LETTERS & SYMBOLS
- ⑦ 6" SKIP-DASH (WHITE)
- ⑧ 8" SOLID (WHITE)
- ⑨ 12" DIAGONAL (WHITE)
- ⑩ 6" CROSS WALK (WHITE)
- ⑪ 24" STOP BAR (WHITE)
- ⑫ 4" SOLID (WHITE)

SYMBOLS	
	TWO-WAY YELLOW RPM
	ONE-WAY YELLOW RPM
	ONE-WAY WHITE RPM
	TWO-WAY WHITE-RED RPM

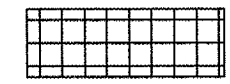
MATCHLINE STA. 82+10

MATCHLINE STA. 87+50

COTTAGE GROVE PLACE

FOREST DR.

IL 9 (COURT ST.)

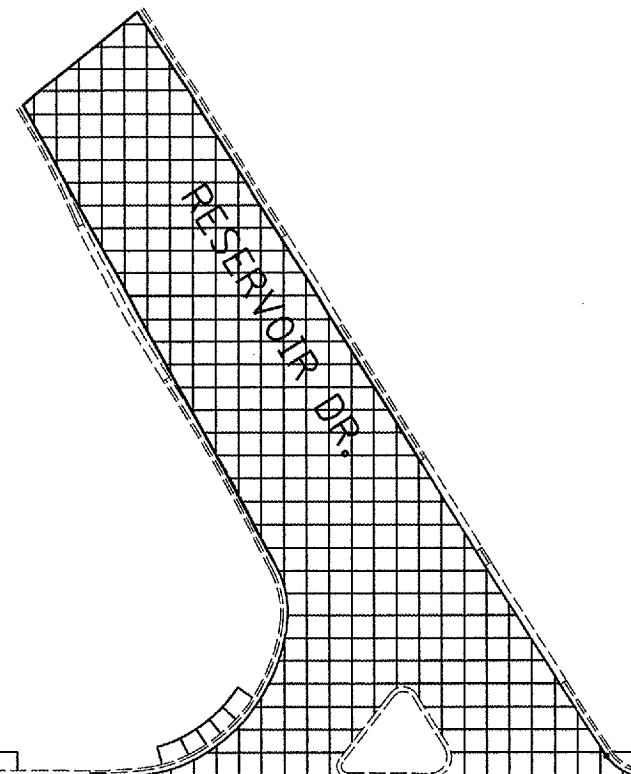


NO IMPROVEMENT

ILLINOIS DEPARTMENT OF TRANSPORTATION  
 PROPOSED PAVEMENT MARKING  
 DETAIL  
 NOT TO SCALE DATE 9/1/2005

F. A. RTE.	SECTION	COUNTY	TOTAL SHEETS	SHEET NO
693	15 RS-2, 118 RS-4	TAZEWELL	28	20

CONTRACT NO. 68375

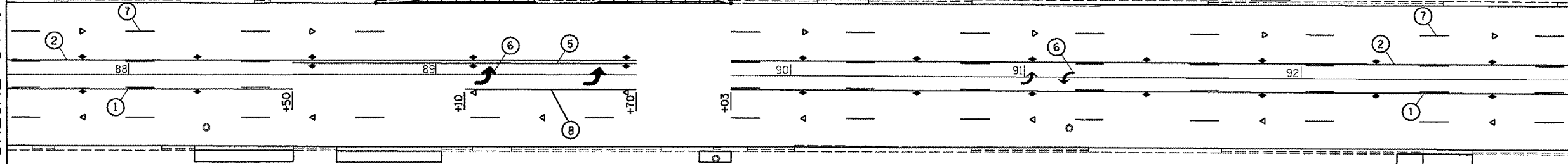


PAVEMENT MARKING LEGEND

- ① 4" SKIP-DASH (YELLOW)
- ② 4" SOLID (YELLOW)
- ③ 12" DIAGONAL (YELLOW)
- ④ 4" DOUBLE YELLOW (NARROW)
- ⑤ 4" DOUBLE YELLOW (WIDE)
- ⑥ LETTERS & SYMBOLS
- ⑦ 6" SKIP-DASH (WHITE)
- ⑧ 8" SOLID (WHITE)
- ⑨ 12" DIAGONAL (WHITE)
- ⑩ 6" CROSS WALK (WHITE)
- ⑪ 24" STOP BAR (WHITE)
- ⑫ 4" SOLID (WHITE)

SYMBOLS	
	TWO-WAY YELLOW RPM
	ONE-WAY YELLOW RPM
	ONE-WAY WHITE RPM
	TWO-WAY WHITE-RED RPM

MATCHLINE STA. 87+50



MATCHLINE STA. 93+00

NO IMPROVEMENT

ILLINOIS DEPARTMENT OF TRANSPORTATION  
 PROPOSED PAVEMENT  
 MARKING  
 DETAIL  
 NOT TO SCALE DATE 9/1/2005

F. A. RTE.	SECTION	COUNTY	TOTAL SHEETS	SHEET NO
693	15 RS-2, 118 RS-4	TAZEWELL	28	21

CONTRACT NO. 68375

PAVEMENT MARKING LEGEND

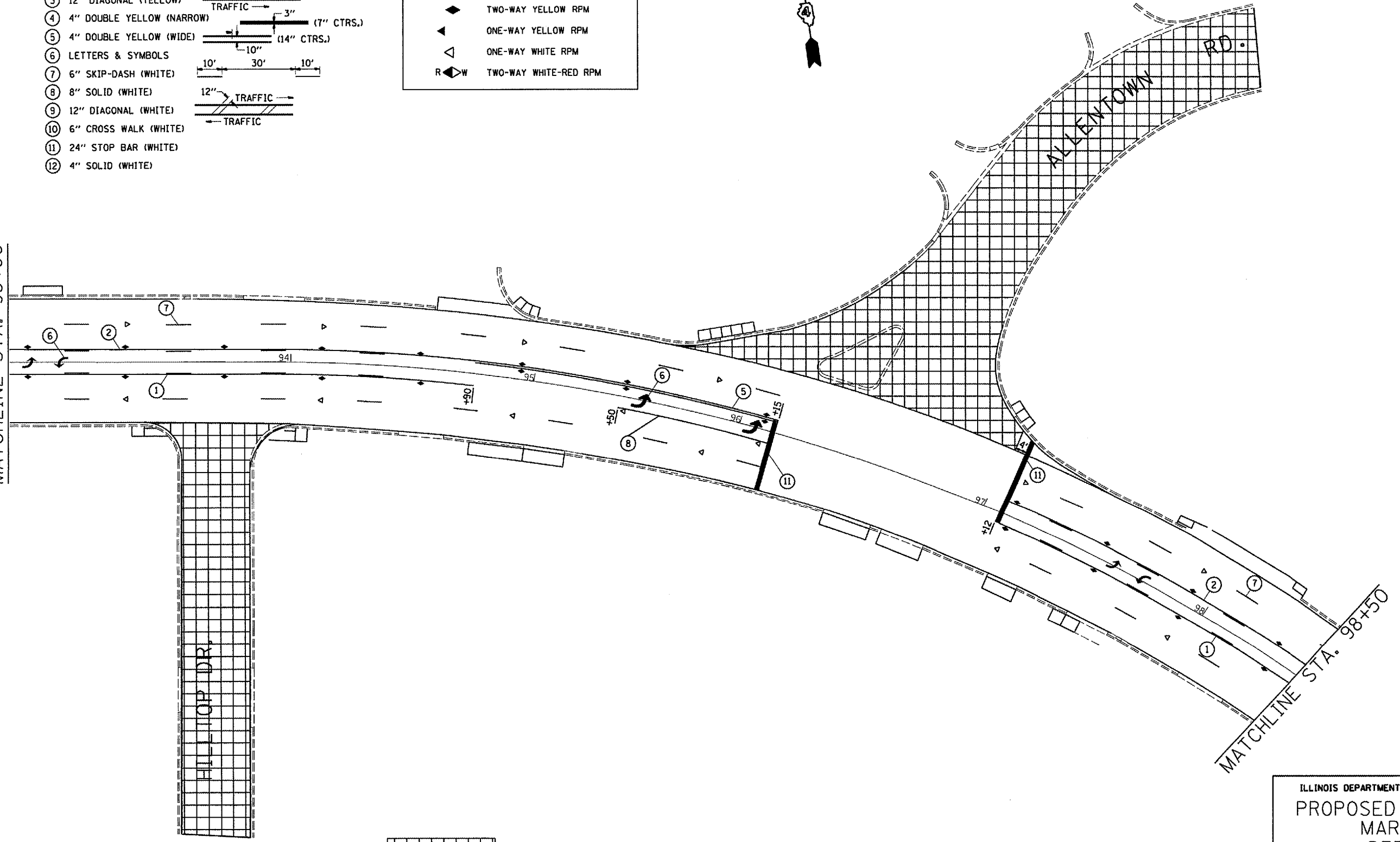
- ① 4" SKIP-DASH (YELLOW)
- ② 4" SOLID (YELLOW)
- ③ 12" DIAGONAL (YELLOW)
- ④ 4" DOUBLE YELLOW (NARROW)
- ⑤ 4" DOUBLE YELLOW (WIDE)
- ⑥ LETTERS & SYMBOLS
- ⑦ 6" SKIP-DASH (WHITE)
- ⑧ 8" SOLID (WHITE)
- ⑨ 12" DIAGONAL (WHITE)
- ⑩ 6" CROSS WALK (WHITE)
- ⑪ 24" STOP BAR (WHITE)
- ⑫ 4" SOLID (WHITE)

SYMBOLS

- ◆ TWO-WAY YELLOW RPM
- ▲ ONE-WAY YELLOW RPM
- △ ONE-WAY WHITE RPM
- R◆W TWO-WAY WHITE-RED RPM



MATCHLINE STA. 93+00



NO IMPROVEMENT

ILLINOIS DEPARTMENT OF TRANSPORTATION  
 PROPOSED PAVEMENT MARKING  
 DETAIL  
 NOT TO SCALE DATE 9/1/2005

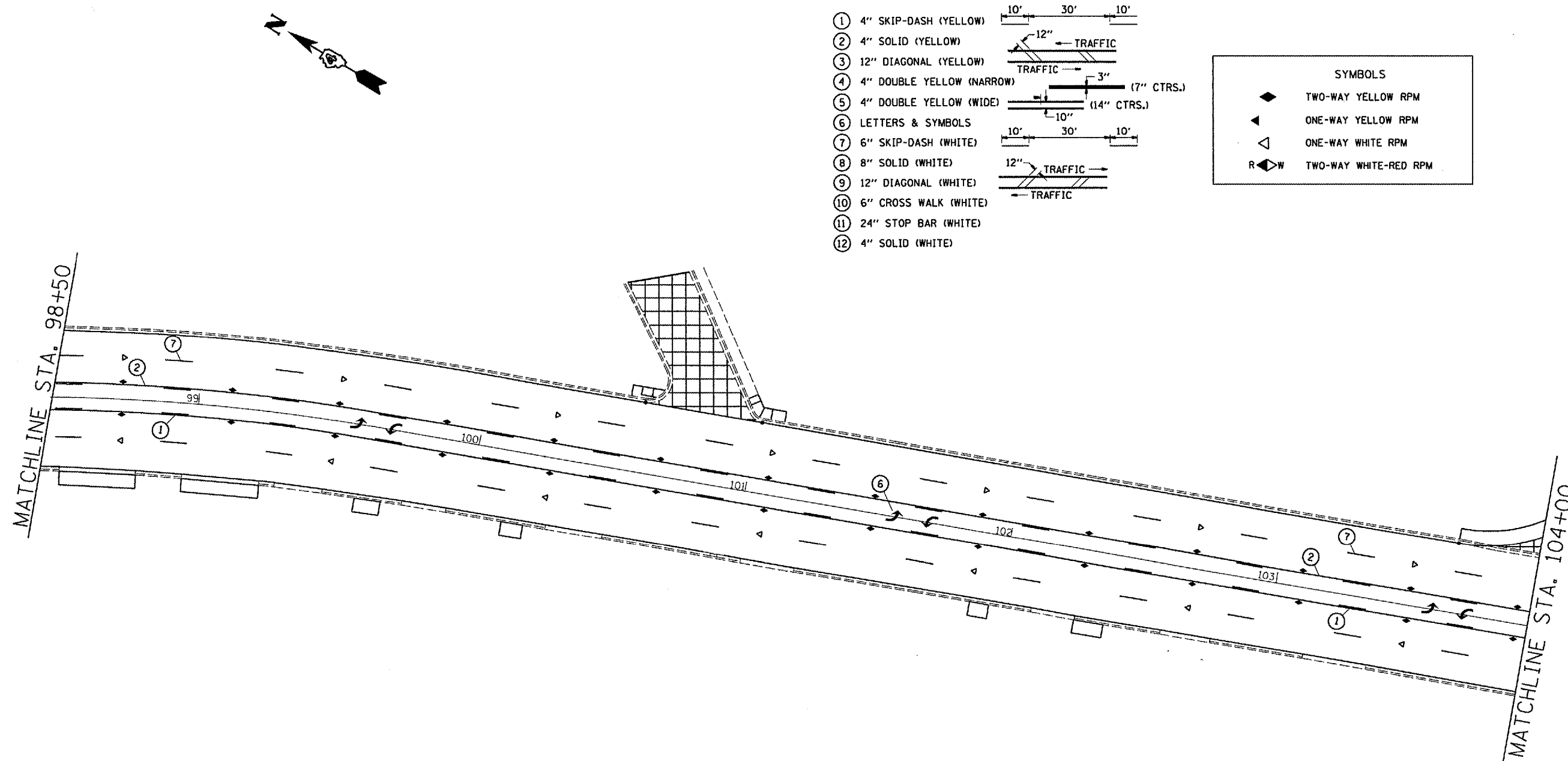
F. A. RTE.	SECTION	COUNTY	TOTAL SHEETS	SHEET NO
693	15 RS-2, 118 RS-4	TAZEWELL	28	22

CONTRACT NO. 68375

PAVEMENT MARKING LEGEND

- ① 4" SKIP-DASH (YELLOW)
- ② 4" SOLID (YELLOW)
- ③ 12" DIAGONAL (YELLOW)
- ④ 4" DOUBLE YELLOW (NARROW)
- ⑤ 4" DOUBLE YELLOW (WIDE)
- ⑥ LETTERS & SYMBOLS
- ⑦ 6" SKIP-DASH (WHITE)
- ⑧ 8" SOLID (WHITE)
- ⑨ 12" DIAGONAL (WHITE)
- ⑩ 6" CROSS WALK (WHITE)
- ⑪ 24" STOP BAR (WHITE)
- ⑫ 4" SOLID (WHITE)

SYMBOLS	
	TWO-WAY YELLOW RPM
	ONE-WAY YELLOW RPM
	ONE-WAY WHITE RPM
	TWO-WAY WHITE-RED RPM



NO IMPROVEMENT

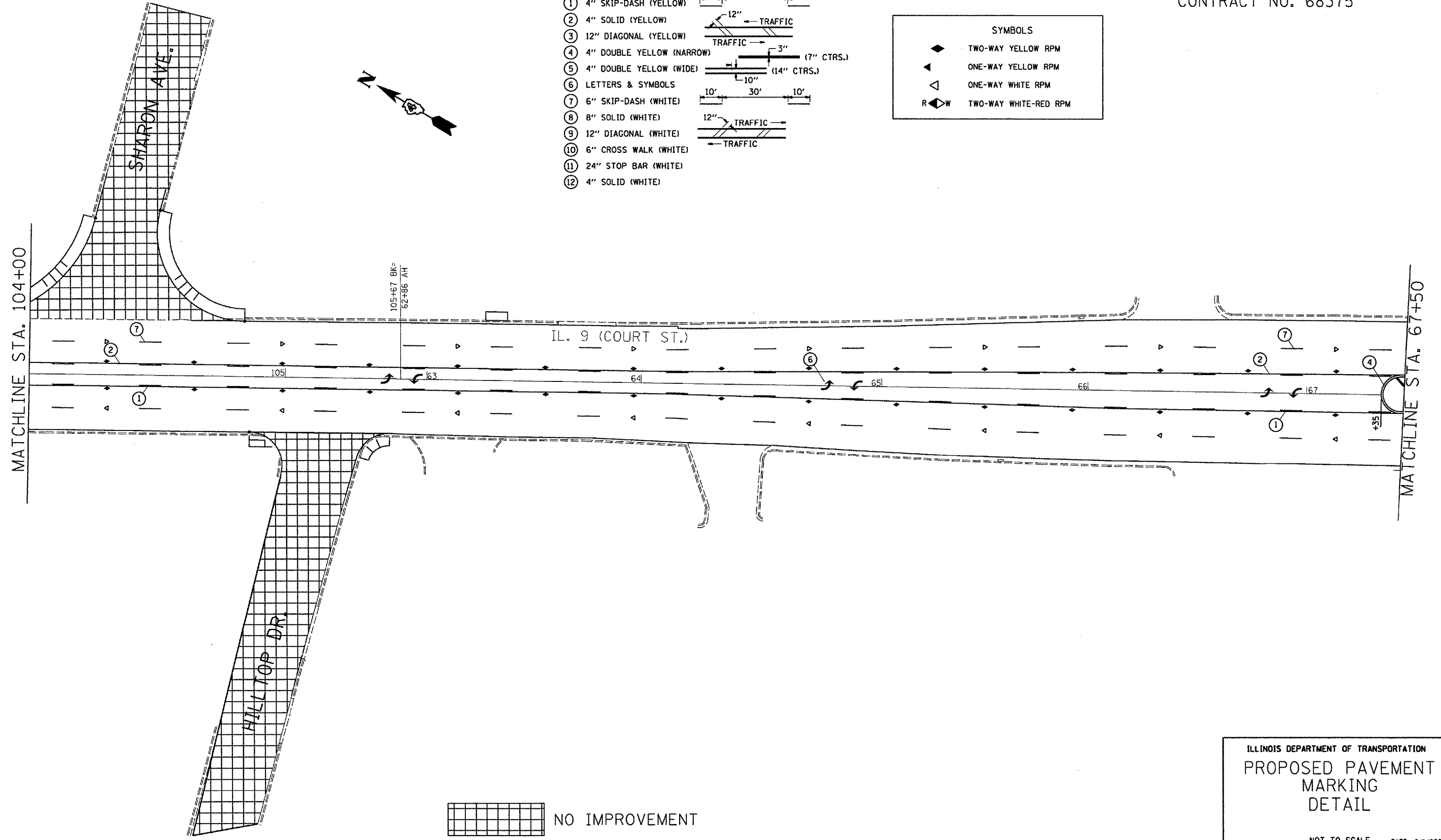
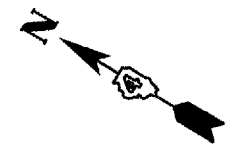
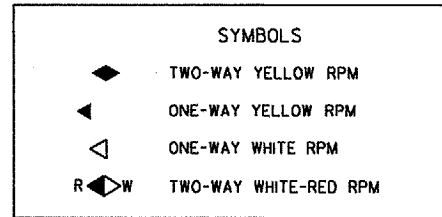
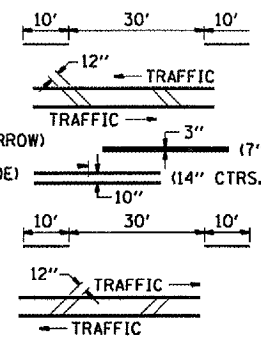
ILLINOIS DEPARTMENT OF TRANSPORTATION  
 PROPOSED PAVEMENT MARKING  
 DETAIL  
 NOT TO SCALE DATE 9/1/2005


F. A. RTE.	SECTION	COUNTY	TOTAL SHEETS	SHEET NO
693	15 RS-2, 118 RS-4	TAZEWELL	28	23

CONTRACT NO. 68375

PAVEMENT MARKING LEGEND

- ① 4" SKIP-DASH (YELLOW)
- ② 4" SOLID (YELLOW)
- ③ 12" DIAGONAL (YELLOW)
- ④ 4" DOUBLE YELLOW (NARROW)
- ⑤ 4" DOUBLE YELLOW (WIDE)
- ⑥ LETTERS & SYMBOLS
- ⑦ 6" SKIP-DASH (WHITE)
- ⑧ 8" SOLID (WHITE)
- ⑨ 12" DIAGONAL (WHITE)
- ⑩ 6" CROSS WALK (WHITE)
- ⑪ 24" STOP BAR (WHITE)
- ⑫ 4" SOLID (WHITE)



 NO IMPROVEMENT

ILLINOIS DEPARTMENT OF TRANSPORTATION  
 PROPOSED PAVEMENT MARKING  
 DETAIL  
 NOT TO SCALE DATE 9/1/2005

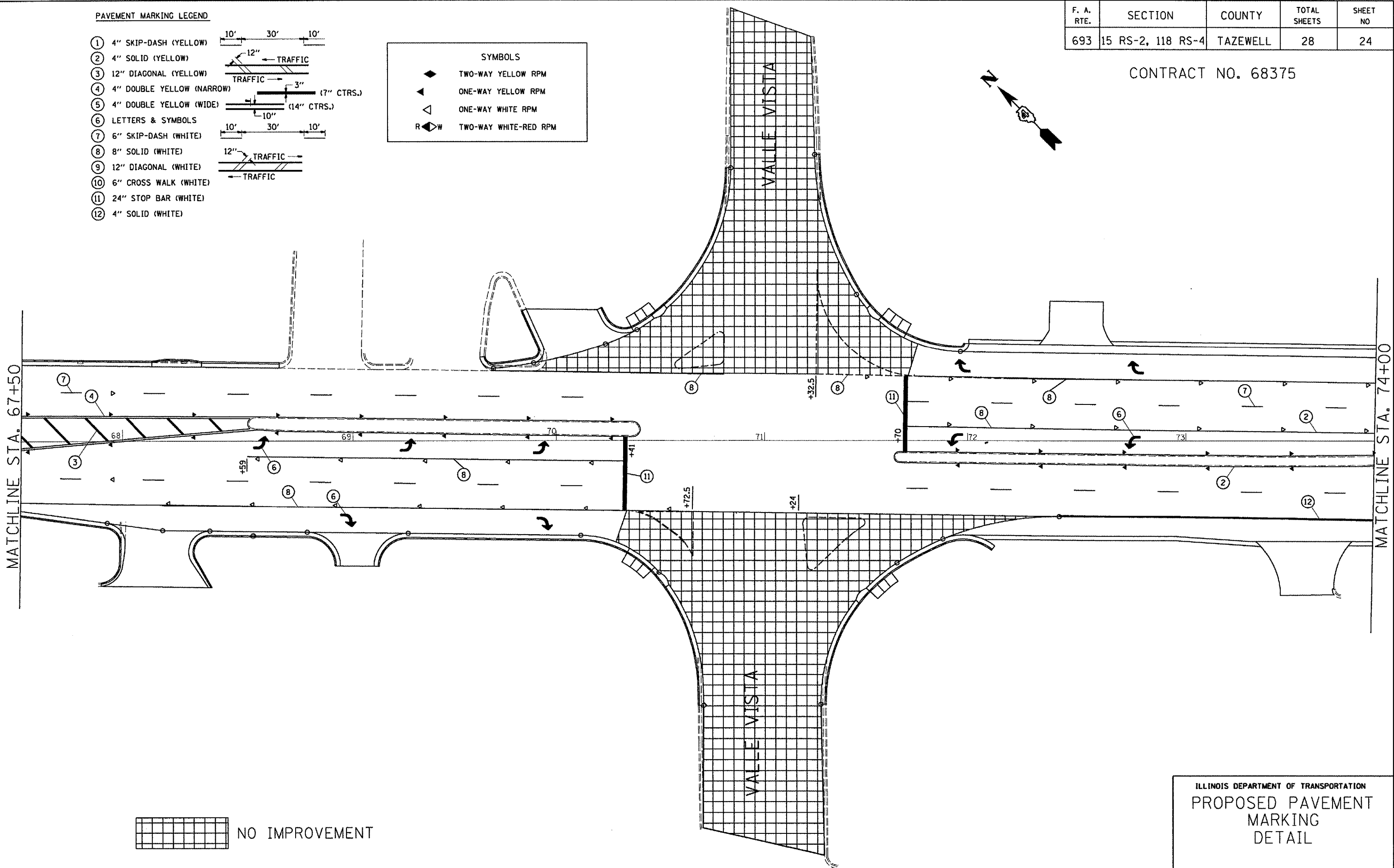
F. A. RTE.	SECTION	COUNTY	TOTAL SHEETS	SHEET NO
693	15 RS-2, 118 RS-4	TAZEWELL	28	24

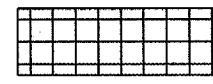
CONTRACT NO. 68375

PAVEMENT MARKING LEGEND

- ① 4" SKIP-DASH (YELLOW)
- ② 4" SOLID (YELLOW)
- ③ 12" DIAGONAL (YELLOW)
- ④ 4" DOUBLE YELLOW (NARROW)
- ⑤ 4" DOUBLE YELLOW (WIDE)
- ⑥ LETTERS & SYMBOLS
- ⑦ 6" SKIP-DASH (WHITE)
- ⑧ 8" SOLID (WHITE)
- ⑨ 12" DIAGONAL (WHITE)
- ⑩ 6" CROSS WALK (WHITE)
- ⑪ 24" STOP BAR (WHITE)
- ⑫ 4" SOLID (WHITE)

- SYMBOLS
- ◆ TWO-WAY YELLOW RPM
  - ◀ ONE-WAY YELLOW RPM
  - ◁ ONE-WAY WHITE RPM
  - R◁W TWO-WAY WHITE-RED RPM



 NO IMPROVEMENT

ILLINOIS DEPARTMENT OF TRANSPORTATION  
 PROPOSED PAVEMENT MARKING  
 DETAIL

NOT TO SCALE DATE 9/1/2005



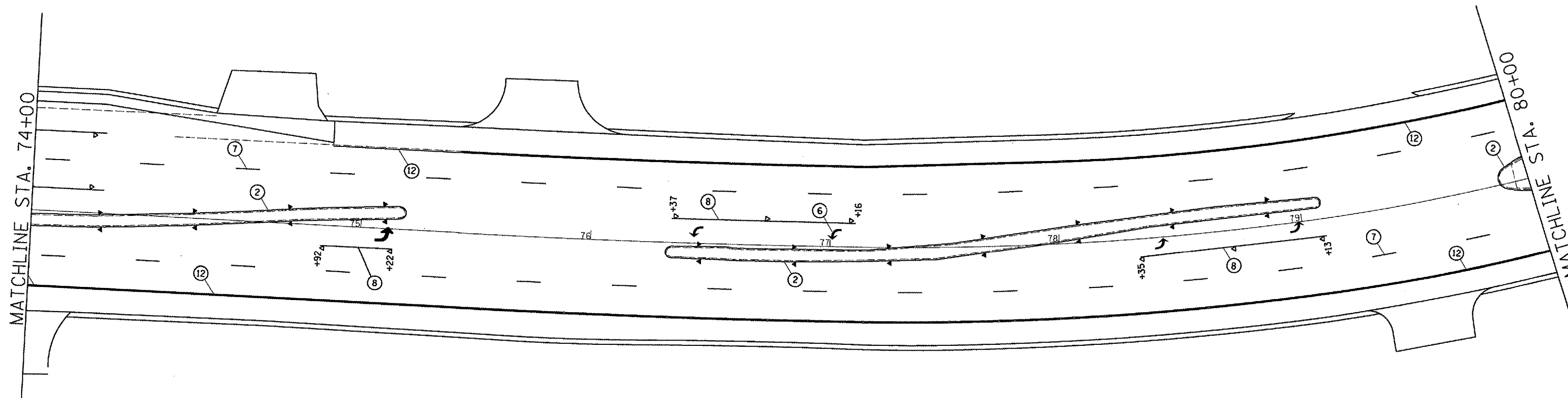
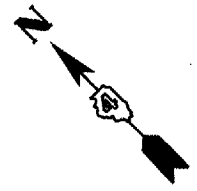
F. A. RTE.	SECTION	COUNTY	TOTAL SHEETS	SHEET NO
693	15 RS-2, 118 RS-4	TAZEWELL	28	25

CONTRACT NO. 68375

PAVEMENT MARKING LEGEND

- ① 4" SKIP-DASH (YELLOW)
- ② 4" SOLID (YELLOW)
- ③ 12" DIAGONAL (YELLOW)
- ④ 4" DOUBLE YELLOW (NARROW)
- ⑤ 4" DOUBLE YELLOW (WIDE)
- ⑥ LETTERS & SYMBOLS
- ⑦ 6" SKIP-DASH (WHITE)
- ⑧ 8" SOLID (WHITE)
- ⑨ 12" DIAGONAL (WHITE)
- ⑩ 6" CROSS WALK (WHITE)
- ⑪ 24" STOP BAR (WHITE)
- ⑫ 4" SOLID (WHITE)

SYMBOLS	
	TWO-WAY YELLOW RPM
	ONE-WAY YELLOW RPM
	ONE-WAY WHITE RPM
	TWO-WAY WHITE-RED RPM



NO IMPROVEMENT

ILLINOIS DEPARTMENT OF TRANSPORTATION  
 PROPOSED PAVEMENT  
 MARKING  
 DETAIL

NOT TO SCALE DATE 9/1/2005

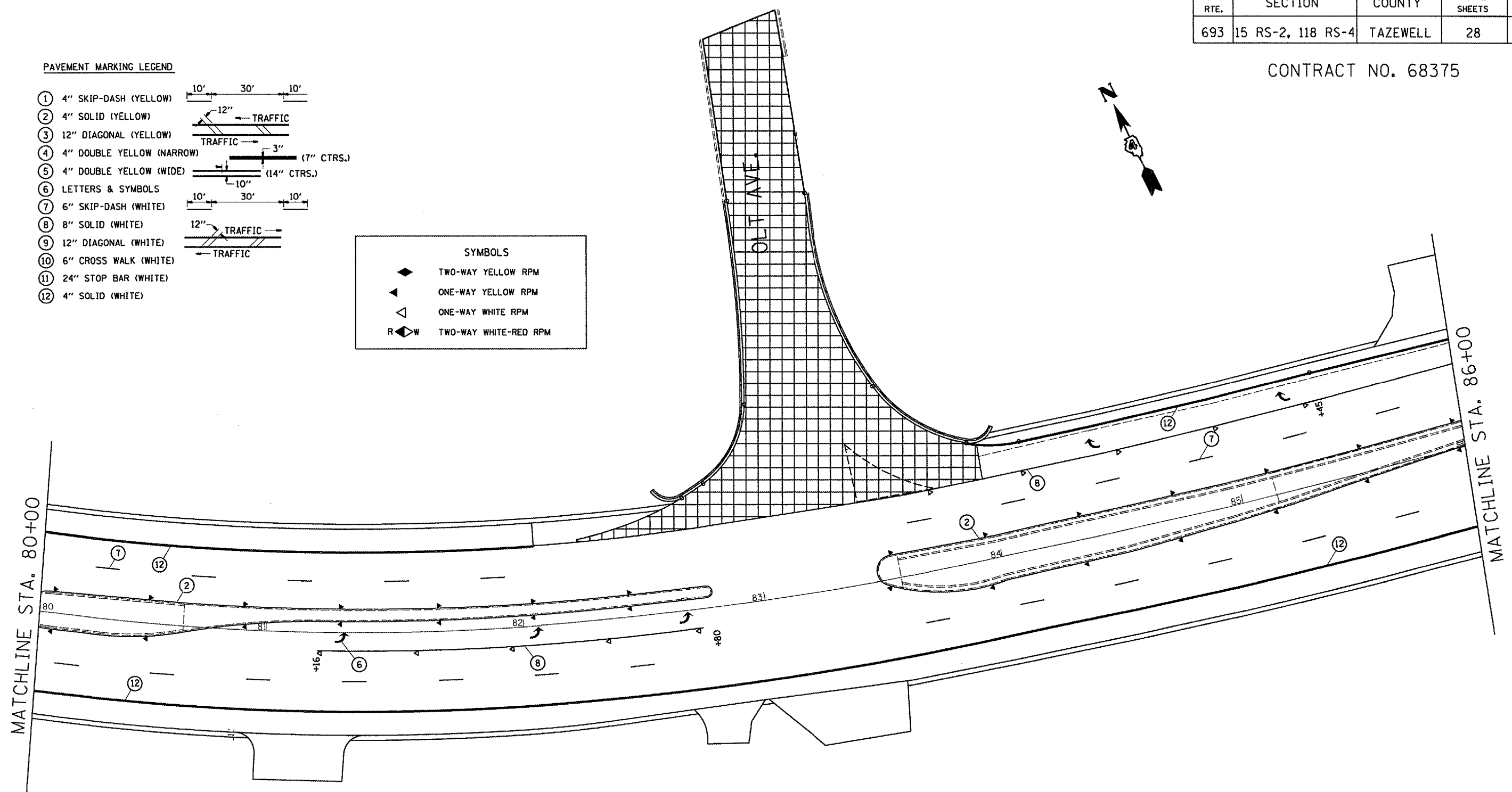
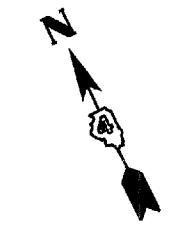
F. A. RTE.	SECTION	COUNTY	TOTAL SHEETS	SHEET NO
693	15 RS-2, 118 RS-4	TAZEWELL	28	26

CONTRACT NO. 68375

PAVEMENT MARKING LEGEND

- ① 4" SKIP-DASH (YELLOW)
- ② 4" SOLID (YELLOW)
- ③ 12" DIAGONAL (YELLOW)
- ④ 4" DOUBLE YELLOW (NARROW)
- ⑤ 4" DOUBLE YELLOW (WIDE)
- ⑥ LETTERS & SYMBOLS
- ⑦ 6" SKIP-DASH (WHITE)
- ⑧ 8" SOLID (WHITE)
- ⑨ 12" DIAGONAL (WHITE)
- ⑩ 6" CROSS WALK (WHITE)
- ⑪ 24" STOP BAR (WHITE)
- ⑫ 4" SOLID (WHITE)

- SYMBOLS
- ◆ TWO-WAY YELLOW RPM
  - ▲ ONE-WAY YELLOW RPM
  - △ ONE-WAY WHITE RPM
  - R ◆ W TWO-WAY WHITE-RED RPM



NO IMPROVEMENT

ILLINOIS DEPARTMENT OF TRANSPORTATION  
 PROPOSED PAVEMENT MARKING  
 DETAIL  
 NOT TO SCALE DATE 9/1/2005

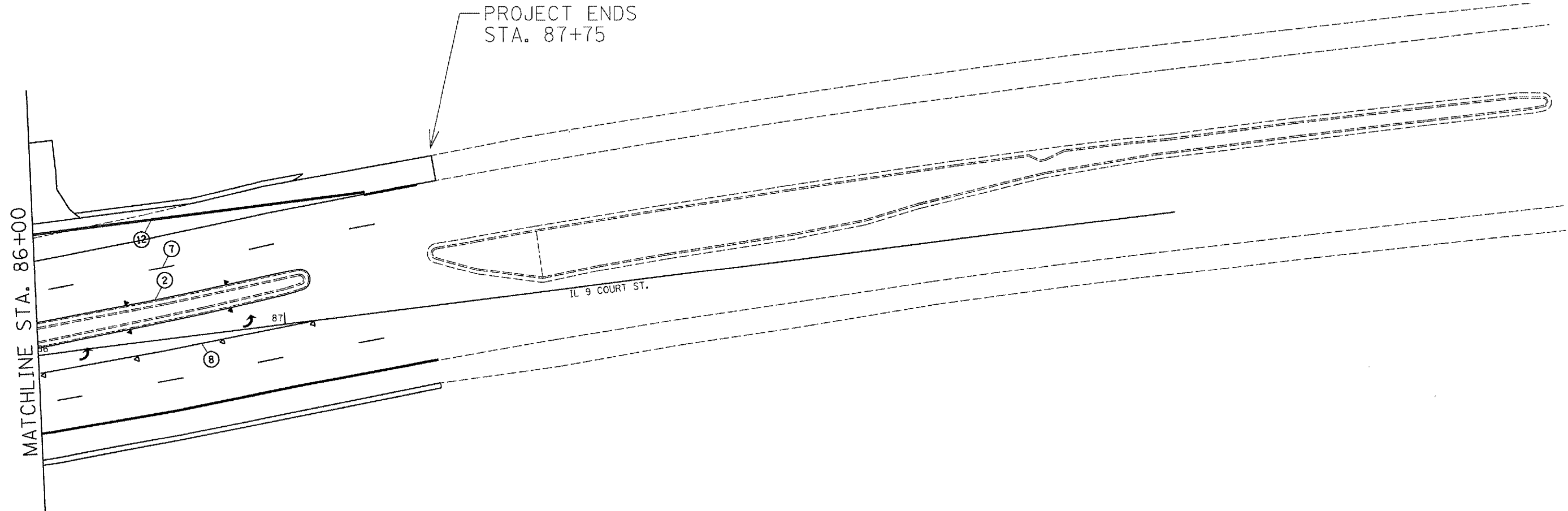
F. A. RTE.	SECTION	COUNTY	TOTAL SHEETS	SHEET NO
693	15 RS-2, 118 RS-4	TAZEWELL	28	27

CONTRACT NO. 68375

PAVEMENT MARKING LEGEND

- ① 4" SKIP-DASH (YELLOW)
- ② 4" SOLID (YELLOW)
- ③ 12" DIAGONAL (YELLOW)
- ④ 4" DOUBLE YELLOW (NARROW)
- ⑤ 4" DOUBLE YELLOW (WIDE)
- ⑥ LETTERS & SYMBOLS
- ⑦ 6" SKIP-DASH (WHITE)
- ⑧ 8" SOLID (WHITE)
- ⑨ 12" DIAGONAL (WHITE)
- ⑩ 6" CROSS WALK (WHITE)
- ⑪ 24" STOP BAR (WHITE)
- ⑫ 4" SOLID (WHITE)

SYMBOLS	
	TWO-WAY YELLOW RPM
	ONE-WAY YELLOW RPM
	ONE-WAY WHITE RPM
	TWO-WAY WHITE-RED RPM



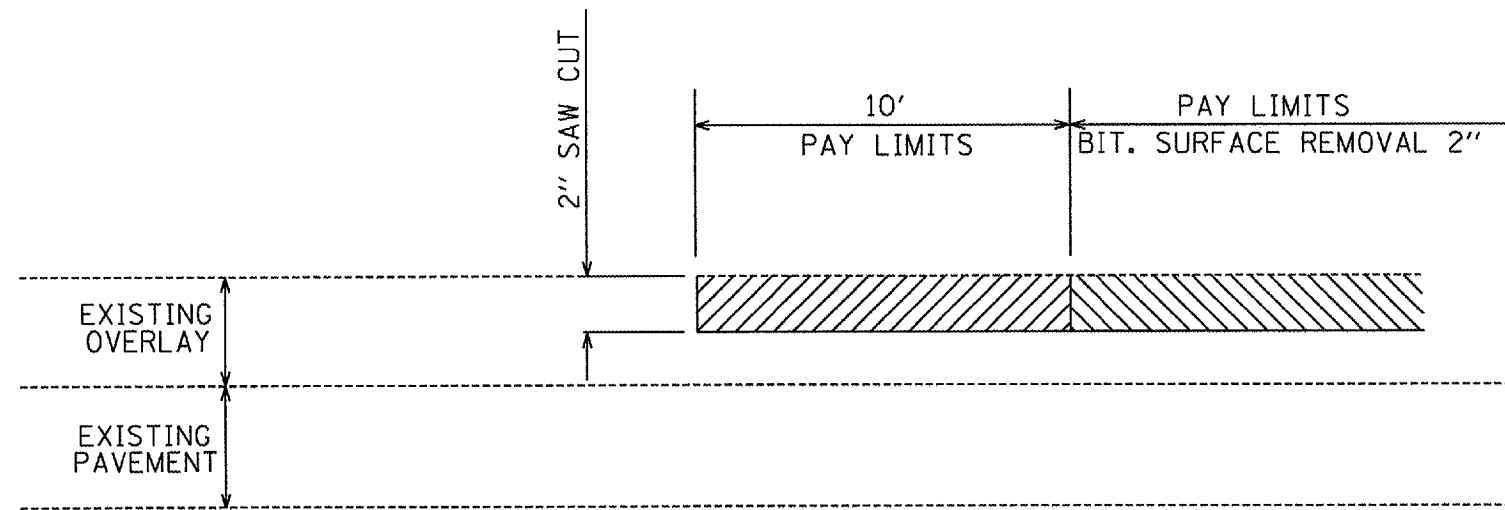
NO IMPROVEMENT

ILLINOIS DEPARTMENT OF TRANSPORTATION  
 PROPOSED PAVEMENT  
 MARKING  
 DETAIL

F. A. RTE.	SECTION	COUNTY	TOTAL SHEETS	SHEET NO
693	15 RS-2, 118 RS-4	TAZEWELL	28	28

CONTRACT NO. 68375

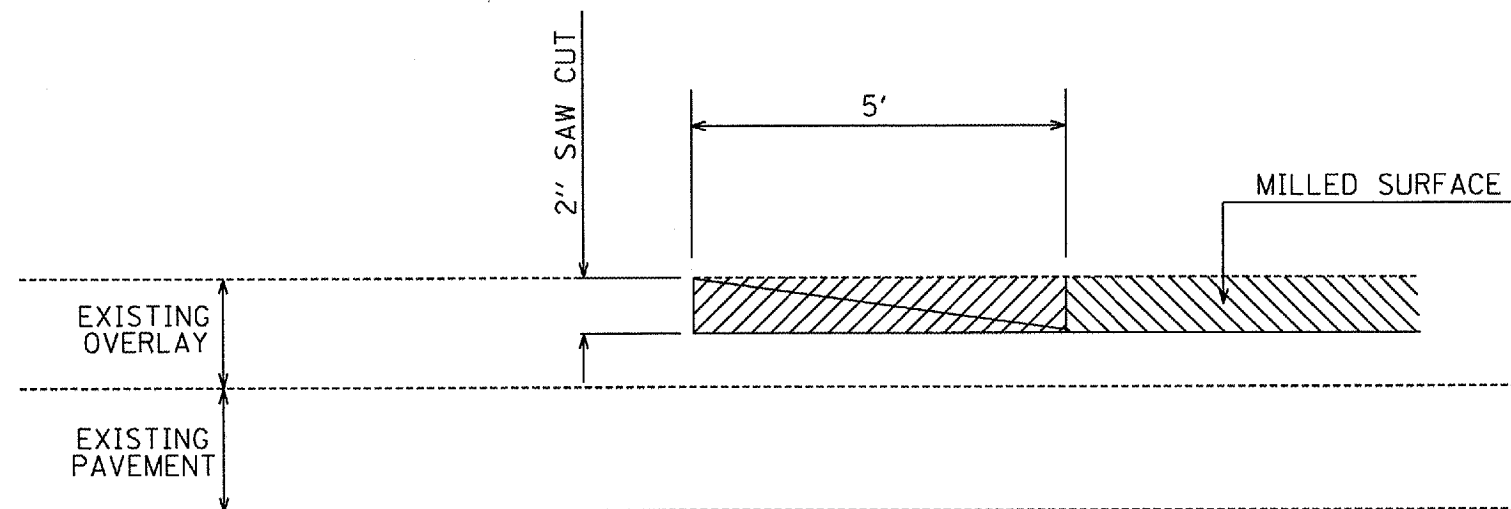
## BUTT JOINTS WITH BITUMINOUS SURFACE REMOVAL



### GENERAL NOTES

1. THE WORK SHALL BE DONE IN ACCORDANCE WITH ARTICLE 406.18 AND THE SPECIAL PROVISION FOR BUTT JOINTS.
2. THE PAVEMENT SURFACE TO BE REMOVED MAY BE EITHER BITUMINOUS, OR P.C. CONCRETE. THE WORK SHALL BE PERFORMED IN ACCORDANCE WITH ARTICLE 440.03 AND THE SPECIAL PROVISIONS FOR BUTT JOINTS.
3. THE SAW CUT JOINTS SHALL BE PRIMED JUST PRIOR TO THE PLACING OF BITUMINOUS MATERIALS. THE WORK WILL BE IN ACCORDANCE WITH THE APPLICABLE PORTIONS OF ARTICLE 406.06.

## TEMPORARY RAMP DETAIL



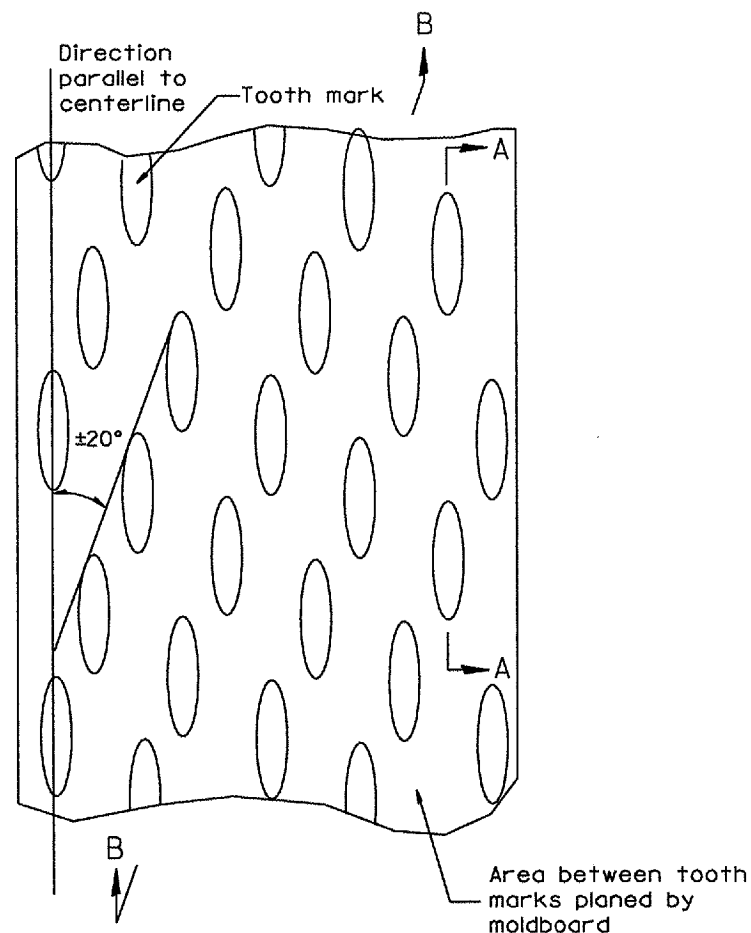
ILLINOIS DEPARTMENT OF TRANSPORTATION

BUTT JOINT &  
TEMPORARY RAMP  
DETAIL

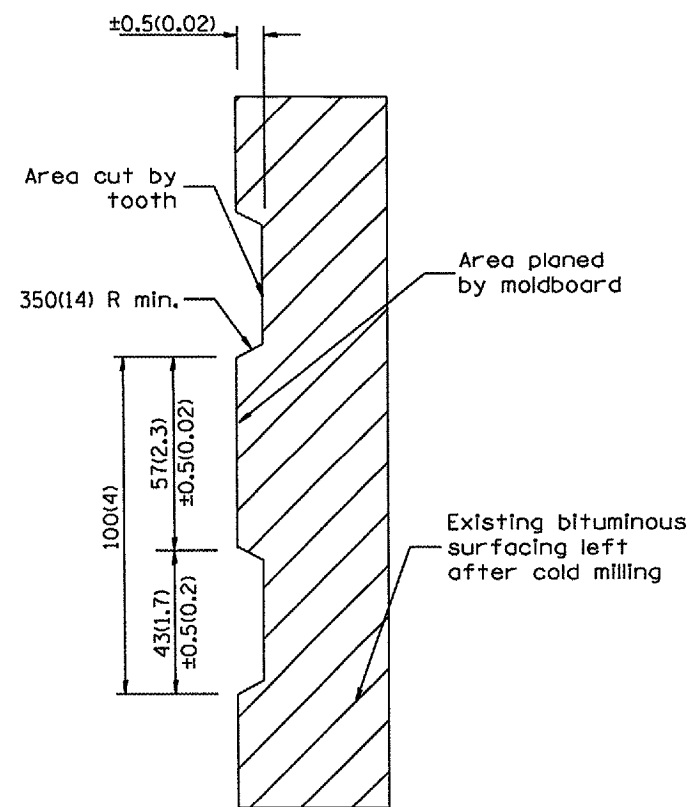
NOT TO SCALE

F. A. RTE.	SECTION	COUNTY	TOTAL SHEETS	SHEET NO
693	15 RS-2, 118 RS-4	TAZEWELL	28	28A

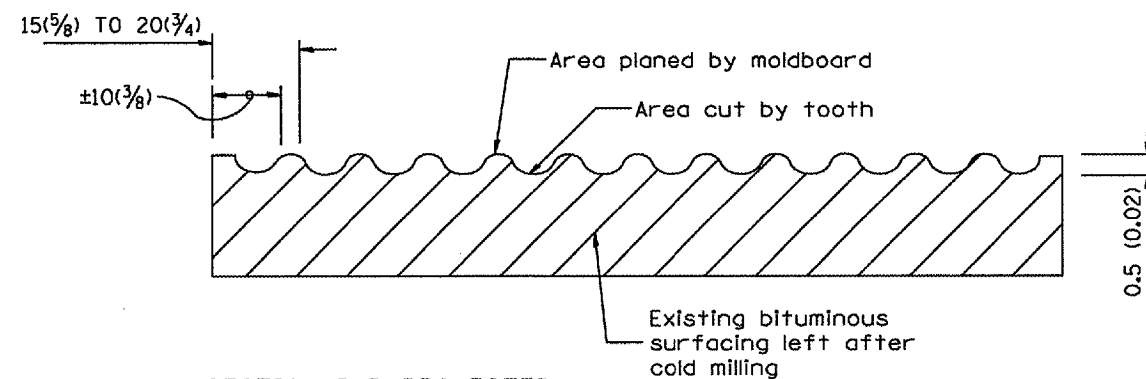
CONTRACT NO. 68375



PLAN



SECTION A-A



SECTION B-B PROJECTED  
PERPENDICULAR TO CENTERLINE

General notes:

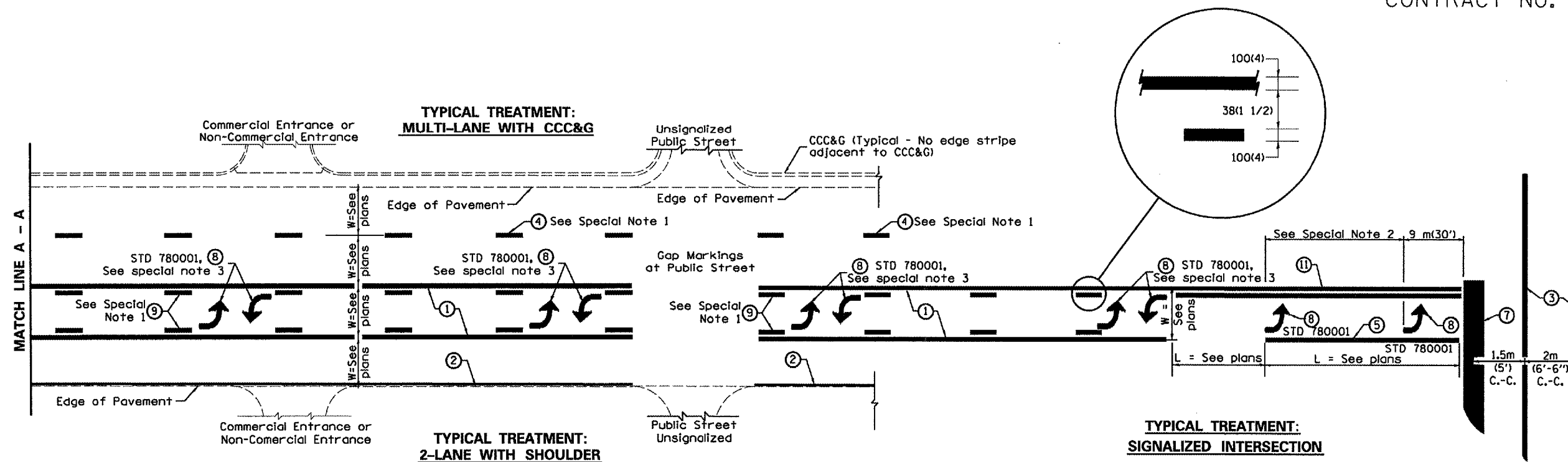
1. Coldmilling shall consist of two processes: Cutting with carbide teeth mounted on a rotating drum, and planing with a moldboard mounted immediately behind the cutting drum.
2. Other similar patterns will be acceptable if they consist of a smooth, flat, planed surface interspersed with a pattern of discontinuous longitudinal striations.

ILLINOIS DEPARTMENT OF TRANSPORTATION  
DISTRICT CADD STANDARD  
BITUMINOUS SURFACE REMOVAL  
(COLD MILLING)

CADD STD. NO. 440001-D4      DRAWN BY CADD  
SCALE: NOT DRAWN TO SCALE      CHECKED BY

F. A. RTE.	SECTION	COUNTY	TOTAL SHEETS	SHEET NO
693	15 RS-2, 118 RS-4	TAZEWELL	28	280

CONTRACT NO. 68375



**FLUSH PAVED MEDIAN: TWO-WAY LEFT TURN LANE WITH ONE-WAY LEFT TURN LANE AT SIGNALIZED INTERSECTION**

**GENERAL NOTES**

1. Refer to State Standard 780001 for additional Pavement Markings including letters & arrows.
2. See Plans for Pavement Markings adjacent to curbed islands and medians, and through lane reductions.

**TYPICAL PAVEMENT MARKING LEGEND**

(Note: This is a District Standard Legend. Some elements may not apply to specific project.)

- ① 100(4) Solid (Yellow)
- ② 100(4) Solid (White)
- ③ 2-150(6) Crosswalk @ 2 m (6'-6'') min C.-C. (White)
- ④ 150(6) Skip-Dash (White) (See Special Note 1)
- ⑤ 200(8) Solid (White)
- ⑥ 300(12) Diagonal (White) (Item ⑥ is shown on Std. 780001)
- ⑦ 600(24) Stop Bar (White)
- ⑧ Letters & Arrows (See Std. 780001 and Special Notes 2 & 3)
- ⑨ 100(4) Skip-Dash (Yellow) (See Special Note 1)
- ⑩ 300(12) Diagonal (Yellow) (See Table A)
- ⑪ 100(4) Double Solid (Yellow) (See Table A)

**SPECIAL NOTES**

1. Skip-Dash markings will be centered between both ends of city blocks and shall be placed in alignment transversely across the pavement.
2. The following shall apply to arrows located in one-way left turn lanes:
  - A. A minimum of two (2) arrows is required.
  - B. The maximum spacing between arrows is 24 m (80').
  - C. Arrows shall be evenly spaced if three (3) or more are required.
3. The following shall apply to arrow pairs located in two-way left turn lanes:
  - A. A minimum of two (2) arrow pairs is required.
  - B. The maximum spacing between arrow pairs is 61 m (200').
  - C. Arrow pairs shall be evenly spaced if three (3) or more are required.
  - D. The spacing between BI Directional Left Turn Arrows is 10 m (33').

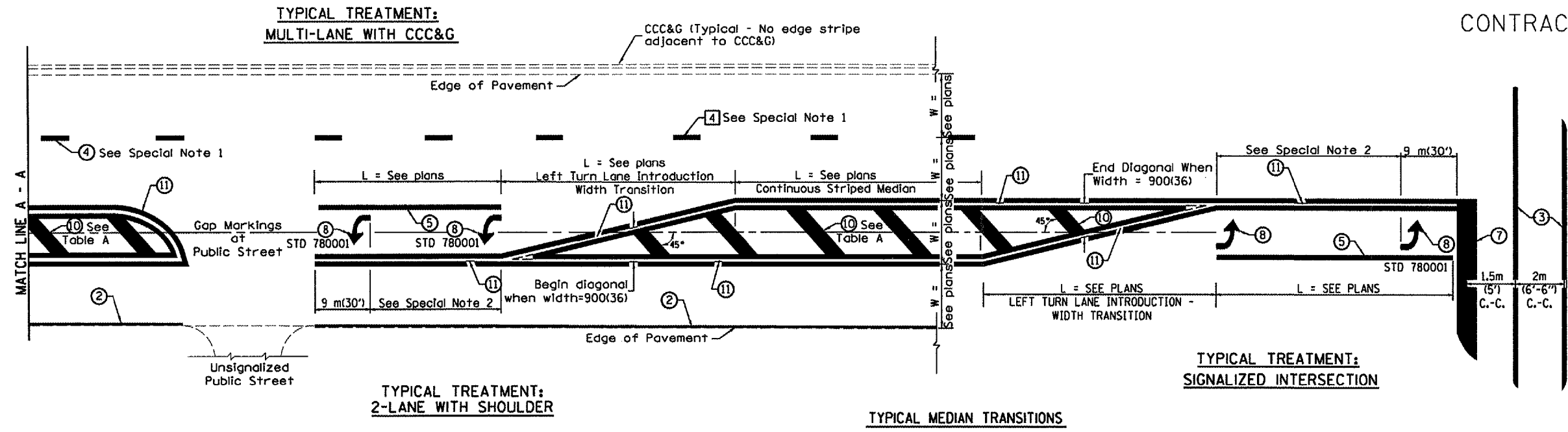
All dimensions are in millimeters (inches) unless otherwise noted.

ILLINOIS DEPARTMENT OF TRANSPORTATION  
DISTRICT CADD STANDARD  
**TYPICAL PAVEMENT MARKINGS**

CADD STANDARD NO. 780001-D4  
SCALE: NOT DRAWN TO SCALE  
SHEET 1 OF 2  
DRAWN BY CADD  
CHECKED BY

F. A. RTE.	SECTION	COUNTY	TOTAL SHEETS	SHEET NO
693	15 RS-2, 118 RS-4	TAZEWELL	28	28c

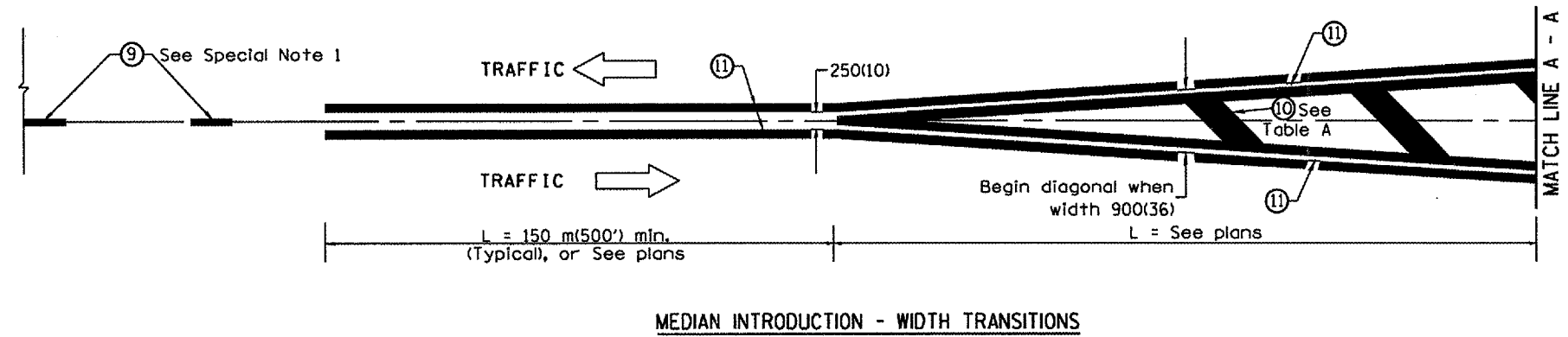
CONTRACT NO. 68375



**FLUSH PAVED MEDIAN: RESTRICTED LEFT TURN LANE**

**TABLE A**  
**RECOMMENDED SPACING BETWEEN DIAGONAL LINES**

SPEED LIMIT RANGE	INTERSECTION CHANNELIZATION (Includes Width Transitions for Median and Left Turn Lane Introductions)	
	CONTINUOUS	
Less Than 50 km/h (30 mph)	15 m (50')	5 m (15')
50 - 70 km/h (30 - 45 mph)	23 m (75')	6 m (20')
Over 70 km/h (45 mph)	46 m (150')	9 m (30')



All dimensions are in millimeters (inches) unless otherwise noted.

ILLINOIS DEPARTMENT OF TRANSPORTATION  
DISTRICT CADD STANDARD  
**TYPICAL PAVEMENT MARKINGS**  
CADD STANDARD NO. 780001-D4  
SCALE: NOT DRAWN TO SCALE  
SHEET 2 OF 2  
DRAWN BY CADD  
CHECKED BY