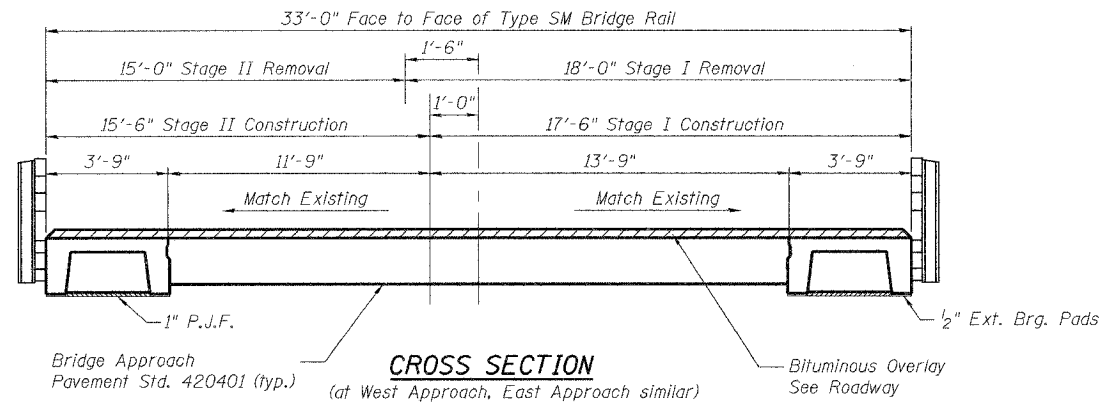


STATE OF ILLINOIS  
DEPARTMENT OF TRANSPORTATION

|                       |           |                  |           |           |
|-----------------------|-----------|------------------|-----------|-----------|
| ROUTE NO.             | SECTION   | COUNTY           | SHEET NO. | SHEET NO. |
| F.A.P. 693            | (119B-31) | TAZEWELL         | 34        | 14        |
| FED. ROAD DIST. NO. 7 | ILLINOIS  | FED. AID PROJECT |           |           |

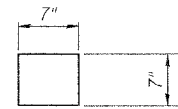


**CROSS SECTION**

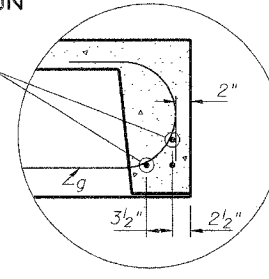
Bridge Approach  
Pavement Std. 420401 (typ.)  
(at West Approach, East Approach similar)

Bituminous Overlay  
See Roadway

Exterior Corners  
16-1/2" Fabric Pads Req'd.  
**BEARING PADS**



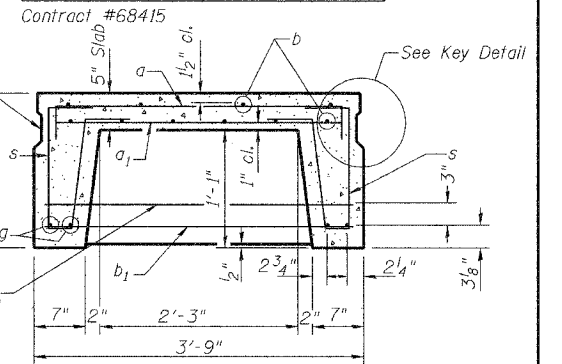
Weld ends of g bars  
to b1 bars with  
full bead weld



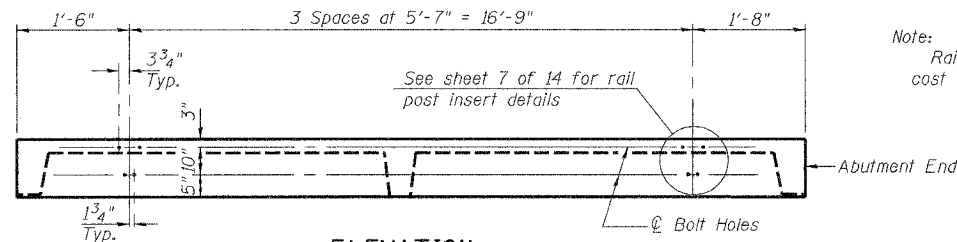
**DETAIL A**

Note:  
The surface of the member shall not deviate more than 1/1200  
of the full length of the member from a straight line connecting the  
two end points on the member's surface. In addition to State  
inspection and prior to erection, the beam shall be  
approved by the resident Engineer at the jobsite.

The units shall remain in the bottom supporting forms until the  
concrete has attained a compressive strength of no less than  
3,500 pounds per square inch.



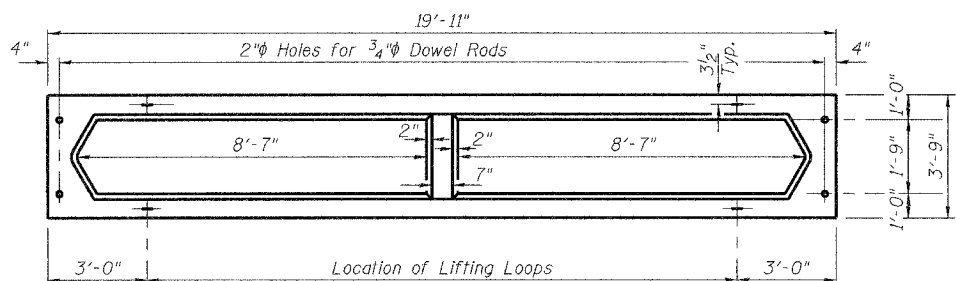
**TYPICAL SECTION THRU BEAM**



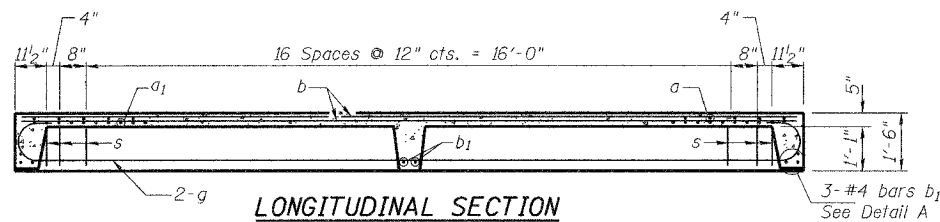
**ELEVATION**

Showing rail post spacing

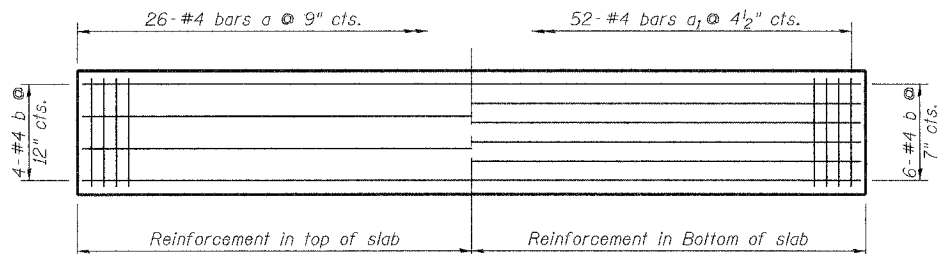
Note:  
Rail post inserts are included in the  
cost of Precast Concrete Bridge Slab.



**TYPICAL PLAN OF BEAM**

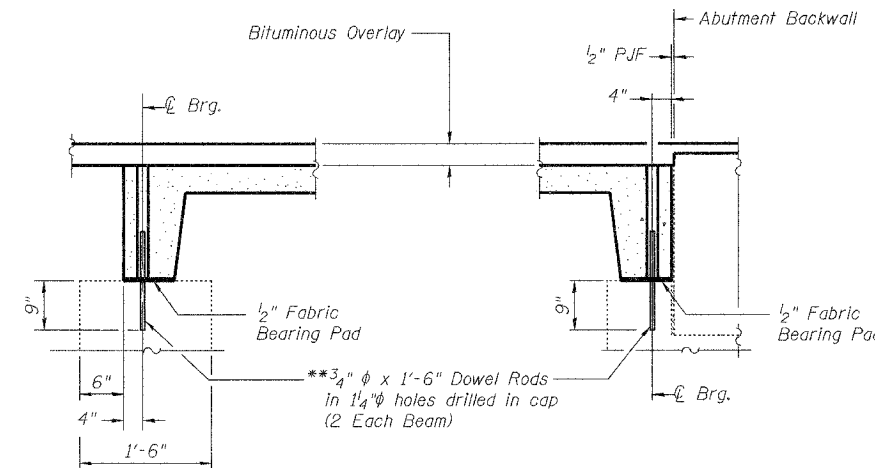


**LONGITUDINAL SECTION**



**PLAN**

Showing Slab Reinforcement

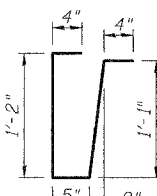


**TYPICAL SECTION THROUGH EXISTING NELSON BEAM FOUNDATION**

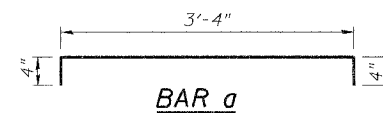
**SECTION THROUGH WEST ABUTMENT (East Abutment Similar)**

\*\* Dowel Rods to be grouted after beams are in place and allowed to cure (Min. 24 hrs.) prior to placing approach slab.

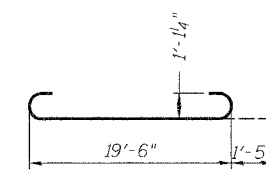
Note:  
Burn existing dowel rods flush with existing surface. Grind existing dowel rods smooth and seal with epoxy. Cost is included with Removal of Existing Superstructures.



**BAR s**



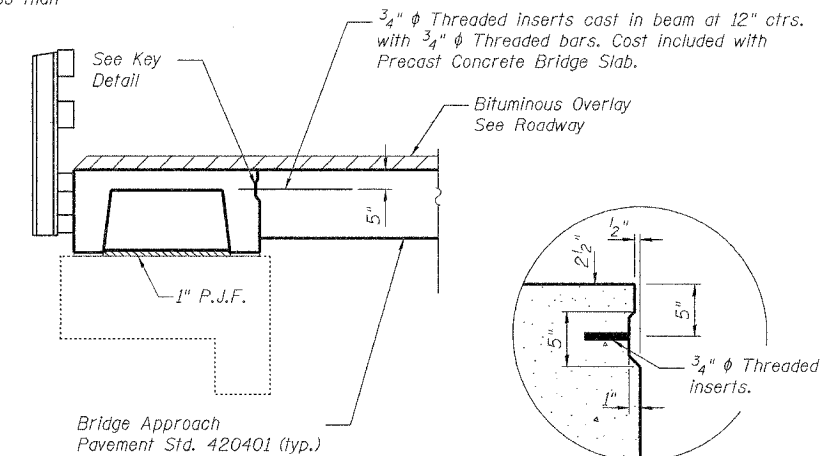
**BAR a**



**BAR g**

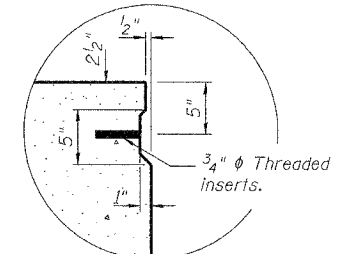
Note:  
Tack welding of stirrups to bottom longitudinal reinforcement bars will not be permitted except as otherwise authorized in writing by the Engineer.

Omit key on exterior face of outside beams.



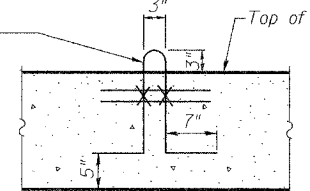
**NELSON BEAM CONNECTOR DETAIL**

Bridge Approach  
Pavement Std. 420401 (typ.)



**KEY DETAIL**

2-1/2" Strands/Loop, 2 Ea. End, Ea. Beam. Loop shall be burned off after beams have been erected. Strands shall conform to the requirements to the requirements of AASHTO M 203.



**LIFTING LOOP**

Approved alternate may be substituted for the above.

**BILL OF MATERIAL**

| ITEM                         | Unit    | Shape |
|------------------------------|---------|-------|
| Precast Concrete Bridge Slab | Sq. Ft. | 299   |

**NELSON BEAM DETAILS**  
**ILLINOIS ROUTE 9 OVER PRAIRIE CREEK**  
**F.A.P. ROUTE 693 SECTION (119B-31)**  
**TAZEWELL COUNTY**  
**SN 090-0061**

|              |  |
|--------------|--|
| DESIGNED BWP | THOUVENOT, WADE & MOERCHEN, INC.<br>ENGINEERS • SURVEYORS • PLANNERS<br><br>CORPORATE OFFICE<br>4940 OLD COLLINGSVILLE RD.<br>SWANSEA, ILLINOIS 62226<br>TEL. (618) 624-4498<br>FAX. (618) 624-6688<br>E-MAIL: cor@twm-inc.com |
| CHECKED ALN  |  |
| DRAWN BWP    |  |
| CHECKED KPC  |  |