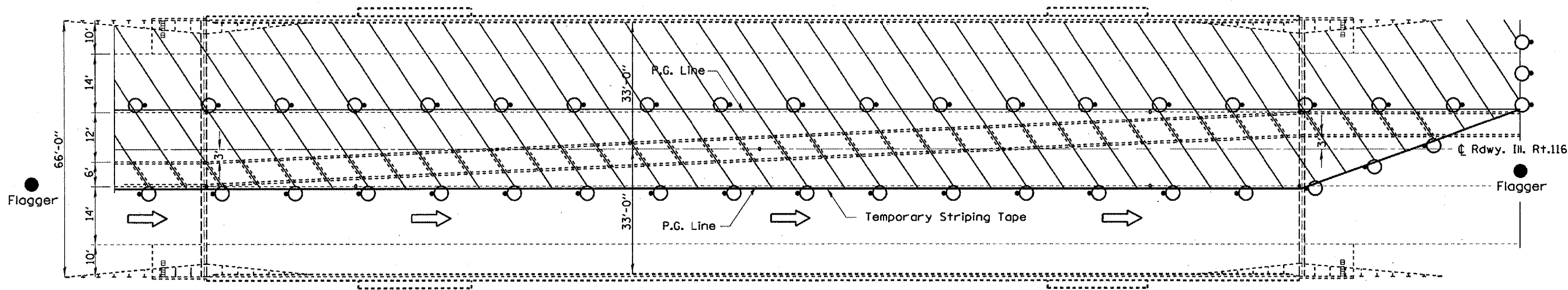
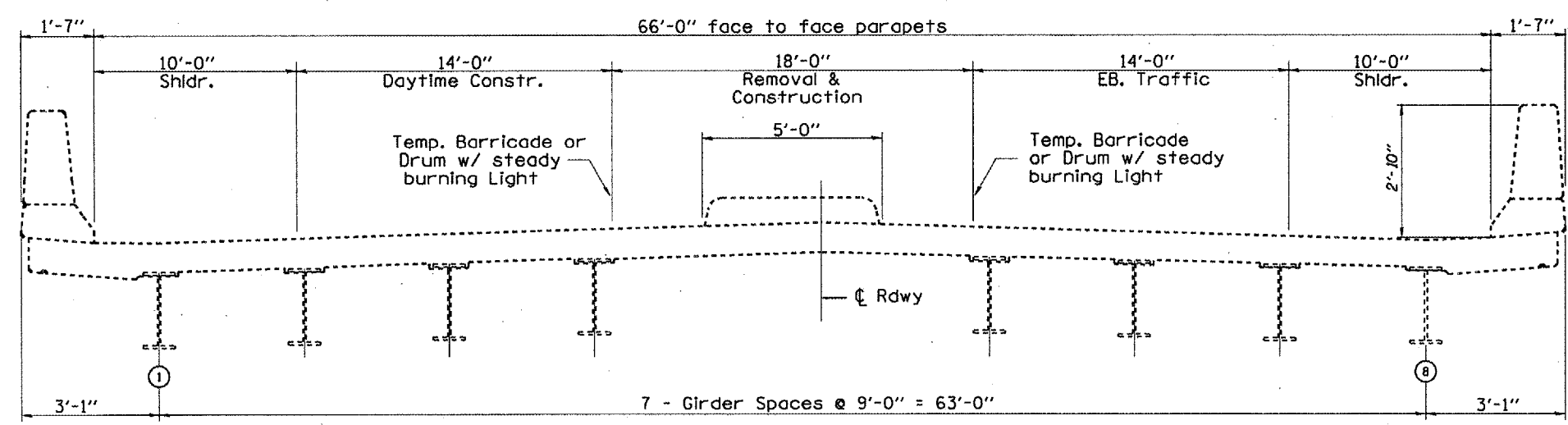


| | | | | |
|---|---------|-------------------|--------------|-----------|
| FAS | SECTION | COUNTY | TOTAL SHEETS | SHEET NO. |
| 39 | | WOODFORD | 12 | 10 |
| STA. 98+85.00 | | TO STA. 101+15.00 | | |
| FED. ROAD DIST. NO. 5 ILLINOIS FED. AID PROJECT | | | | |
| • 04 CONC MEDIAN REPAIR 2007 | | | | |



TRAFFIC & CONTROL PLAN



TRAFFIC & CONTROL (Looking EAST)

| | |
|--|--------------------------------------|
| | Work Area |
| | Drum w/steady burning light |
| | Temporary Striping |
| | Sign |
| | Arrow Board |
| | Type III Barricade w/Flashing Lights |
| | Flagger w/Traffic Control Sign |

NOTES
 Refer to Highway Standards 701201 (daylight) and 701602 (night) for exact placement of traffic management devices and other clarifications as construction staging symbols and dimensioning were duplicated off of this standard. ReflectORIZED temporary pavement marking tape shall be placed along each side of the entire length of the median work area.

PLT DATE • DWG DATE
 PLOT SCALE • USER NAME

| REVISIONS | |
|-----------|------|
| NAME | DATE |
| | |
| | |
| | |
| | |
| | |
| | |
| | |
| | |
| | |
| | |

S.N. 102-0049
 Rt.116 over I-39
 Woodford County

ILLINOIS DEPARTMENT OF TRANSPORTATION

TRAFFIC CONTROL

SCALE: VERT. HORIZ.
 DATE 12-12-2005

DRAWN BY CEJ
 CHECKED BY