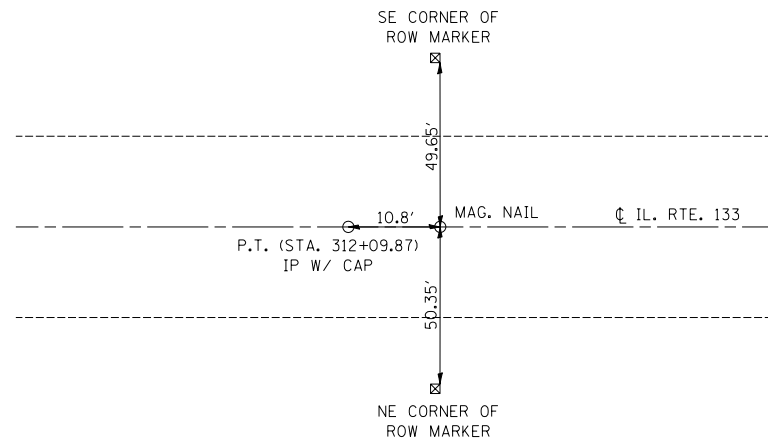


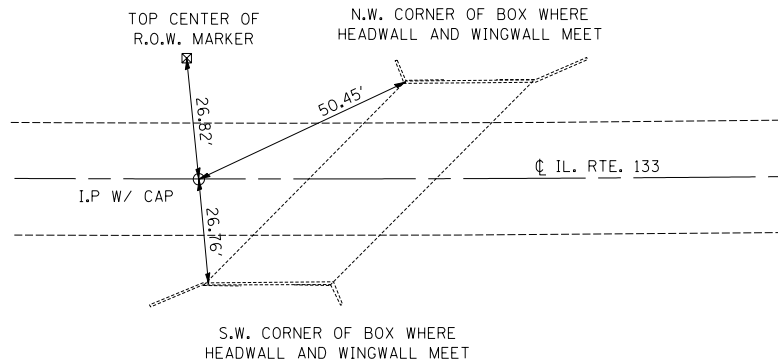
F.A.P. RTE.	SECTION	COUNTY	TOTAL SHEETS	SHEET NO.
749		EDGAR	75	21

CONTRACT NO. 70134
 • 14RS-2,122RS-3 & (123NRS,14)BR

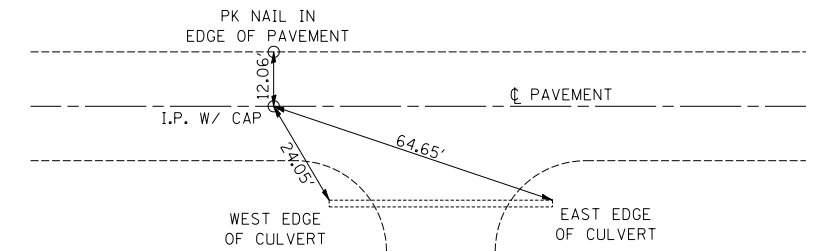
**P.O.T.
 STA. 312 + 20.70 (BK)
 STA. 309 + 71.20 (AH)**



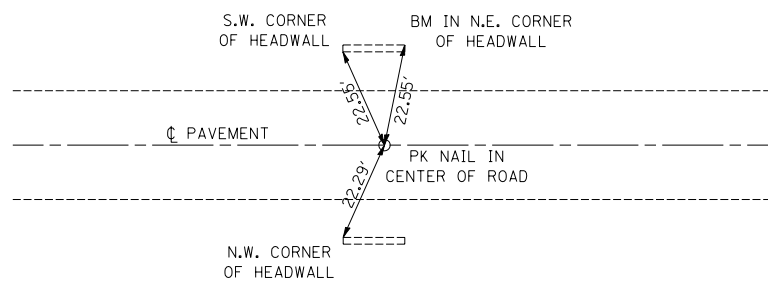
**P.I. KINK
 321 + 73.58**



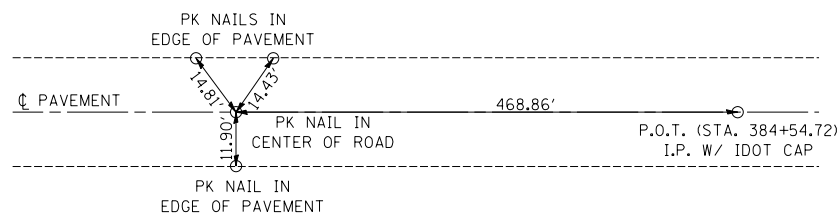
**P.O.T.
 STA. 345 + 01.92**



**P.O.T.
 STA. 367 + 52**



**P.O.T.
 STA. 379 + 86.23**



**P.O.T.
 STA. 384 + 54.72**

