

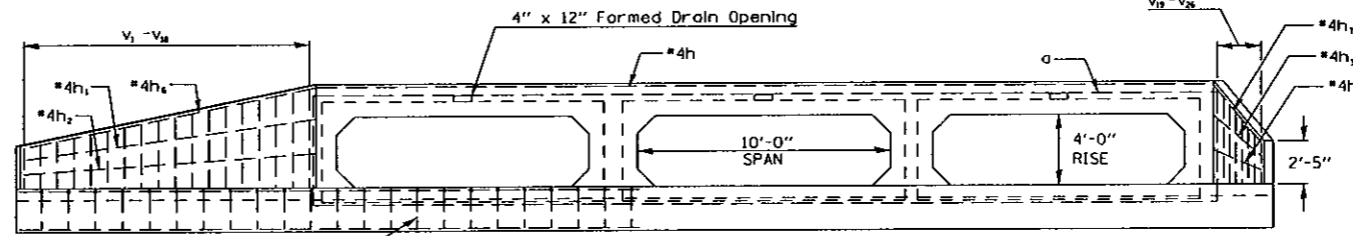
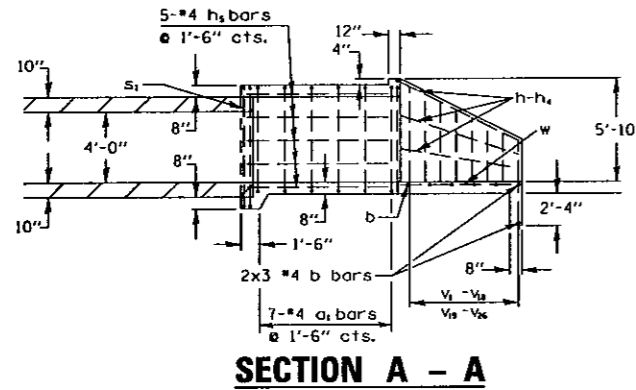
# DETAIL OF BOX CULVERT END SECTION

## A.R. BOX CULVERT TYPE 3 @ 10.0' X 4.0'

### STA. 280 + 24 (CULVERT NO. 2)

CONTRACT NO. 70134  
D-95-064-00

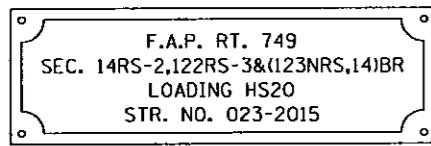
F.A.P. RITE.	SECTION	COUNTY	TOTAL SHEETS	SHEET NO.
749		EDGAR	75	35
STA.	TO STA.			
FED. ROAD DIST. NO. ILLINOIS FED. AID PROJECT				
• 14RS-2,122RS-3 & (123NRS,14)BR				



**END VIEW**

**BILL OF MATERIAL (ONE HEADWALL)**

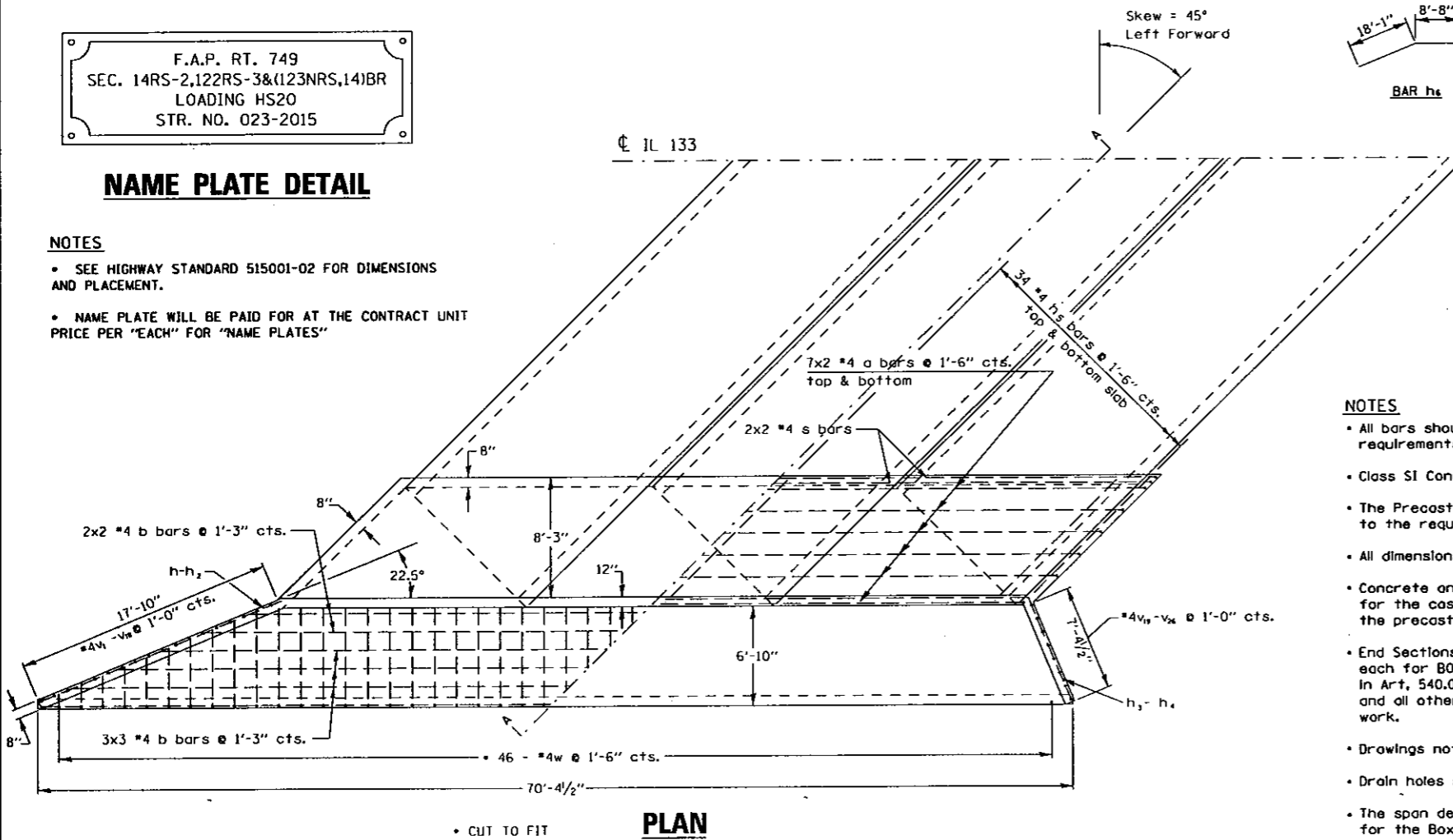
Bar	No.	Size	Length (ft)	Shape
a	28	#4	26'-6"	
a <sub>1</sub>	14	#4	9'-2"	J
b	19	#4	29'-3"	
h	2	#4	26'-9"	
h <sub>1</sub>	1	#4	17'-11"	
h <sub>2</sub>	1	#4	17'-10"	
h <sub>3</sub>	1	#4	7'-8"	
h <sub>4</sub>	1	#4	7'-5"	
h <sub>5</sub>	78	#4	12'-9"	
h <sub>6</sub>	2	#4	26'-9"	
h <sub>7</sub>	2	#4	26'-9"	
s	8	#4	26'-6"	
s <sub>1</sub>	4	#4	10'-0"	J
v <sub>1</sub>	1	#4	7'-6"	J
v <sub>2</sub>	1	#4	7'-4"	J
v <sub>3</sub>	1	#4	7'-1"	J
v <sub>4</sub>	1	#4	6'-11"	J
v <sub>5</sub>	1	#4	6'-8"	J
v <sub>6</sub>	1	#4	6'-6"	J
v <sub>7</sub>	1	#4	6'-4"	J
v <sub>8</sub>	1	#4	6'-1"	J
v <sub>9</sub>	1	#4	5'-11"	J
v <sub>10</sub>	1	#4	5'-8"	J
v <sub>11</sub>	1	#4	5'-6"	J
v <sub>12</sub>	1	#4	5'-4"	J
v <sub>13</sub>	1	#4	5'-1"	J
v <sub>14</sub>	1	#4	4'-11"	J
v <sub>15</sub>	1	#4	4'-8"	J
v <sub>16</sub>	1	#4	4'-6"	J
v <sub>17</sub>	1	#4	4'-4"	J
v <sub>18</sub>	1	#4	4'-1"	J
v <sub>19</sub>	1	#4	7'-6"	J
v <sub>20</sub>	1	#4	7'-0"	J
v <sub>21</sub>	1	#4	6'-6"	J
v <sub>22</sub>	1	#4	6'-0"	J
v <sub>23</sub>	1	#4	5'-7"	J
v <sub>24</sub>	1	#4	5'-1"	J
v <sub>25</sub>	1	#4	4'-7"	J
v <sub>26</sub>	1	#4	4'-1"	J
w	46	#4	9'-4"	J
<b>Reinforcement Bars</b>	<b>LB.</b>	<b>3,445</b>		
<b>Class SI Conc. Hdwall</b>	<b>CU. YD.</b>	<b>47.7</b>		



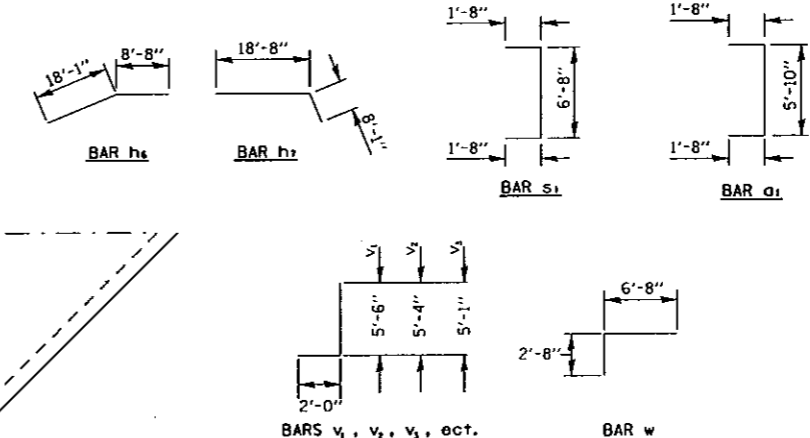
**NAME PLATE DETAIL**

**NOTES**

- SEE HIGHWAY STANDARD 515001-02 FOR DIMENSIONS AND PLACEMENT.
- NAME PLATE WILL BE PAID FOR AT THE CONTRACT UNIT PRICE PER "EACH" FOR "NAME PLATES"



**PLAN**



**NOTES**

- All bars should be rounded and shall conform to the requirements of Art. 1006.10 of Standard Specs.
- Class SI Concrete shall be used throughout.
- The Precast Concrete Box Culvert Sections shall conform to the requirements of AASHTO M273.
- All dimensions are in FEET ("-INCHES (") unless otherwise noted.
- Concrete and Rebar quantities and lengths calculated for the cast-in-place End Sections will vary based on the precast box culverts supplied.
- End Sections will be paid for at the contract unit price each for BOX CULVERT END SECTION CULVERT NO. 2 as outlined in Art. 540.08, which prices shall include all concrete, rebar, and all other items necessary to complete the proposed work.
- Drawings not to scale.
- Drain holes shall be provided in accordance with Art. 503.12.
- The span dimension on the End View give the opening span for the Box Culvert. Due to the Skew of the box The End Section opening is larger.
- Bars indicated thus 12x4 #4 etc., indicates 12 lines of bars with 4 lengths per line.

BOX CULVERT END SECTIONS (CAST IN PLACE)  
3 @ 10.0' X 4.0'  
STA. 280+24 45° SKEW  
STRUCTURE NO. 023-2015

REVISIONS		ILLINOIS DEPARTMENT OF TRANSPORTATION	
NAME	DATE		

CULVERT DETAILS

SCALE: VERT. DATE 050404
HORIZ. DRAWN BY JOC

CHECKED BY

PLOT DATE: 5/16/2005  
 FILE NAME: m:\projects\2004180\100\100\boxculvert.dwg  
 PLOT SCALE: 1/8"=1'-0"  
 REFERENCE: 06/23