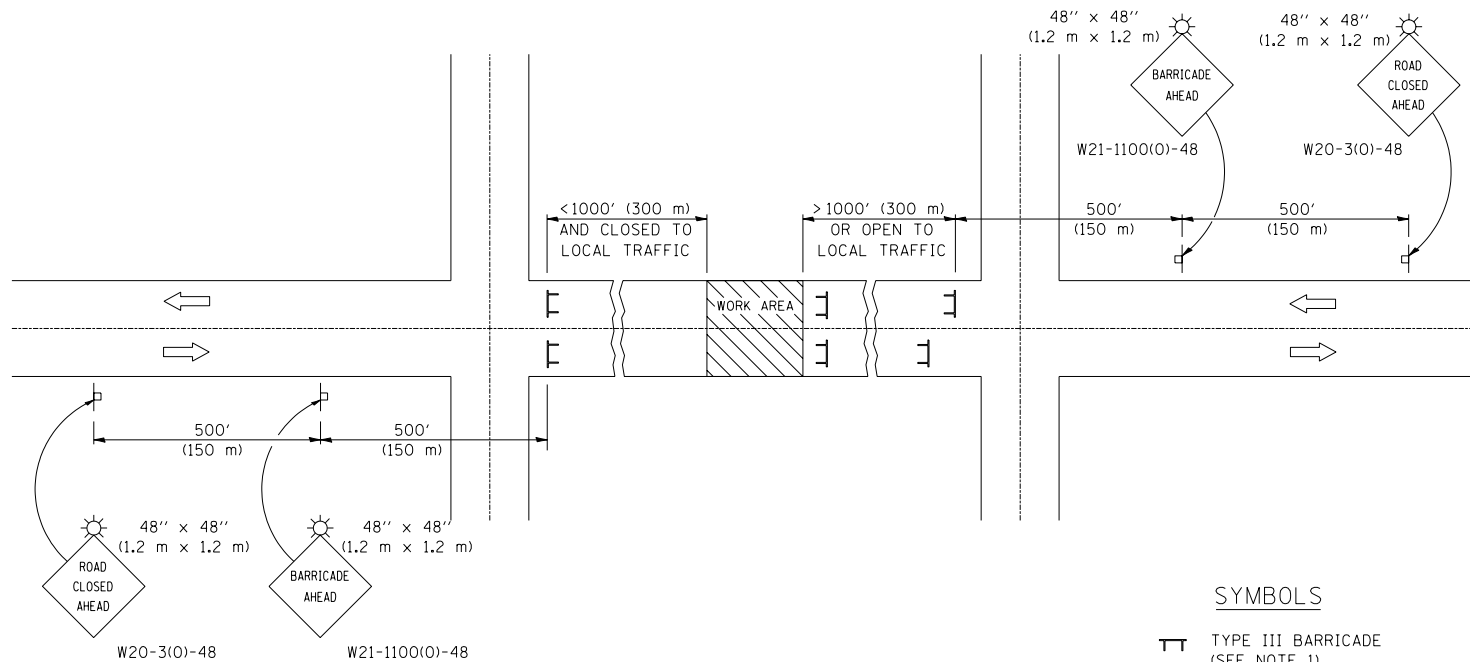


## TYPICAL APPLICATION OF TRAFFIC CONTROL DEVICES FOR ROAD CLOSURE



### SYMBOLS

- TYPE III BARRICADE (SEE NOTE 1)
- FLASHING AMBER LIGHT (TYPE A)

### GENERAL NOTES

1. TYPE III BARRICADES SHALL BE AS SHOWN ON STANDARD 702001 "TYPICAL APPLICATIONS OF TYPE III BARRICADES CLOSING A ROAD". EACH TYPE III BARRICADE SHALL HAVE TWO FLASHING AMBER LIGHTS MOUNTED ABOVE IT.
2. IF THE ROAD IS OPEN TO LOCAL TRAFFIC OR EXCEEDS 1000' (300 m), ANOTHER SET OF TYPE III BARRICADES, EQUIPPED AS IN NOTE 1 ABOVE, SHALL BE PLACED AT EACH END OF THE WORK AREA.
3. WHEN A STOP CONDITION EXISTS, NO SIGNS ARE REQUIRED IN ADVANCE OF THE "STOP" SIGN WHEN THE ROAD IS CLOSED WITHIN 100' (30 m) OF THE INTERSECTION.
4. STANDARD 702001 SHALL APPLY FOR THE PLACEMENT & DESIGN OF TYPE III BARRICADES.
5. IF A TYPE III BARRICADE WITH AN ATTACHED SIGN PANEL WHICH MEETS NCHRP 350 IS NOT AVAILABLE, THE SIGNS MAY BE MOUNTED ON AN NCHRP 350 TEMPORARY SIGN SUPPORT DIRECTLY IN FRONT OF THE BARRICADE.
6. REFLECTORIZED STRIPING SHALL APPEAR ON BOTH SIDES OF THE TYPE III BARRICADES IF ROAD IS OPEN TO LOCAL TRAFFIC.
7. ALL SIGNS SHALL BE POST MOUNTED IF THE CLOSURE TIME EXCEEDS FOUR DAYS.
8. A MINIMUM OF TWO FLASHING LIGHTS SHALL BE USED AT NIGHT ON EACH APPROACH IN ADVANCE OF THE WORK AREA. FLASHING LIGHTS SHALL BE INSTALLED ABOVE THE FIRST TWO SIGNS IN THE SERIES.
9. LONGITUDINAL DIMENSIONS MAY BE ADJUSTED SLIGHTLY TO FIT FIELD CONDITIONS.
10. FORMS BT. 725 AND BT. 726 ARE REQUIRED.
11. WHEN A SIDEROAD INTERSECTS THE HIGHWAY ON WHICH WORK IS BEING PERFORMED, ADDITIONAL TRAFFIC DEVICES SHALL BE ERECTED AND PROVIDED AS DIRECTED BY THE ENGINEER.
12. AN ADDITIONAL SIGN MAY BE REQUIRED AT A MAJOR INTERSECTING ROAD IN ADVANCE OF THE CLOSURE. THE ADDITIONAL SIGN SHALL GIVE THE DISTANCE TO THE BARRICADE IN MILES OR FRACTIONS OF A MILE.

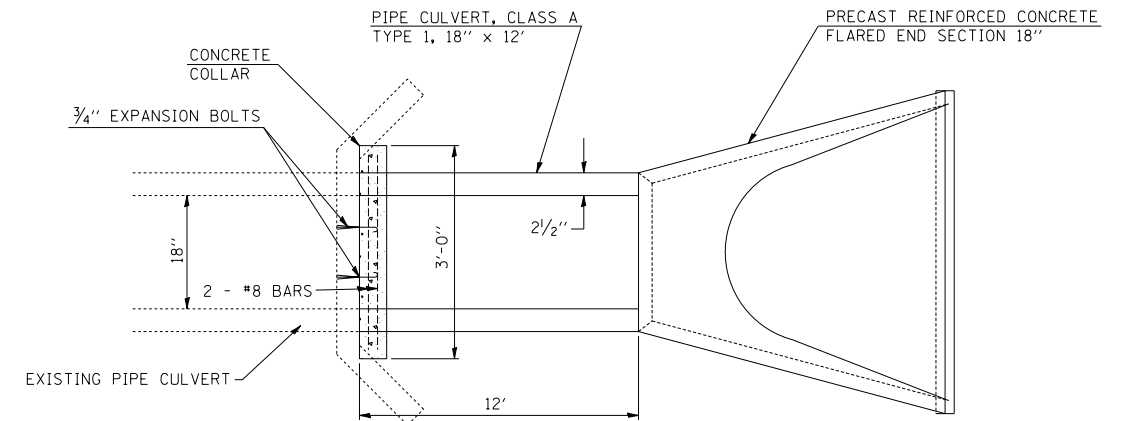
	NAME	DATE	REVISIONS	
DESIGNED	J.H.M.	8-11-87	NAME	DATE
CHECKED	P.E.K.	8-25-87	R.M.H.	12/97
CADD NO.	F-5.03		C.P./K.A.G.	01/05

ALL DIMENSIONS ARE IN INCHES (MILLIMETERS) UNLESS OTHERWISE SHOWN.

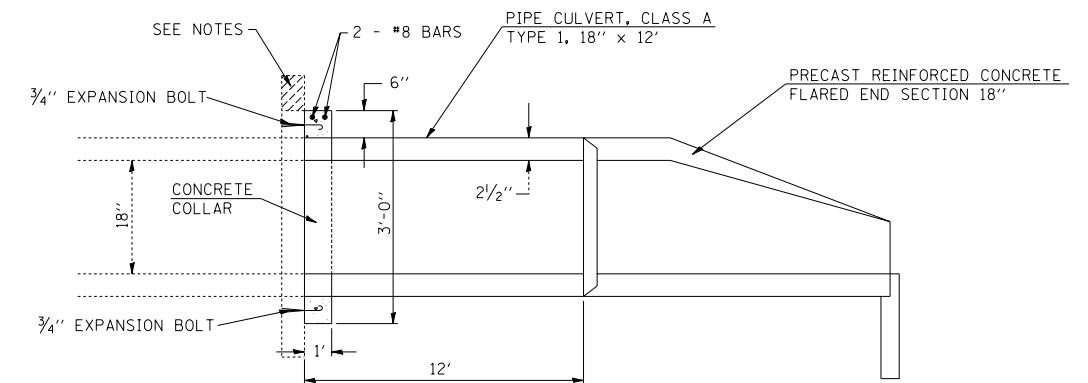
F.A.P. RTE.	SECTION	COUNTY	TOTAL SHEETS	SHEET NO.
749		EDGAR	75	41

CONTRACT NO. 70134  
• 14RS-2,122RS-3 & (123NRS,14)BR

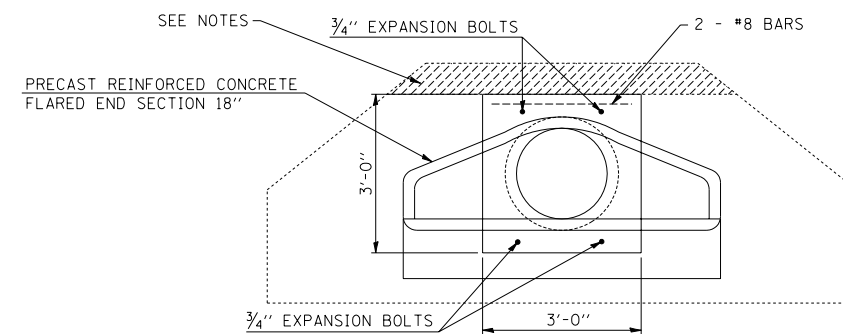
## PIPE CULVERT EXTENSION DETAIL



### PLAN VIEW



### LONGITUDINAL SECTION



### END VIEW

#### ESTIMATED QUANTITIES

- CONCRETE COLLAR - 0.3 CU YD
- EXPANSION BOLTS - 4 EACH
- REINFORCEMENT BAR - 16 LBS

### NOTES

- CLASS SI CONCRETE SHALL BE USED THROUGHOUT
- EXPANSION BOLTS SHALL CONSIST OF SELF-DRILLING EXPANSION SHIELD AND 3/4" HOOK BAR. THE HOOKED BAR SHALL EXTEND 6" MINIMUM INTO CONCRETE COLLAR AND EXISTING HEADWALL.
- THE CULVERT SHALL BE BACKFILLED IN ACCORDANCE WITH THE STANDARD SPECIFICATIONS.
- EXISTING WING WALLS AND HEADWALL SHALL BE REMOVED AS INDICATED HERE ON OR AS OTHERWISE DIRECTED BY THE ENGINEER TO PROVIDE 9" OF EARTH BETWEEN REMAINING CONCRETE AND FINISHED GRADE.
- THE CONTRACTOR SHALL REMOVE ADDITIONAL PORTIONS OF THE WING WALLS AS REQUIRED TO ALLOW THE PIPE CULVERT TO FIT TIGHTLY AGAINST THE HEADWALL, OR MAY PROVIDE BANDING OR OTHER APPROVED METHOD TO PREVENT CONCRETE FROM ENTERING THE INTERIOR OF THE PIPE CULVERT
- THE LENGTH OF THE PROPOSED CULVERT EXTENSION MAY BE ADJUSTED TO MEET FIELD CONDITIONS AND AT THE DIRECTION OF THE ENGINEER.
- THE COST OF CONCRETE REMOVAL AND REINFORCEMENT BARS WILL BE CONSIDERED INCIDENTAL TO THE CONTRACT UNIT PRICE CUBIC YARDS FOR CONCRETE COLLARS, AND NO ADDITIONAL COMPENSATION SHALL BE ALLOWED.