

STATE OF ILLINOIS  
DEPARTMENT OF TRANSPORTATION  
DIVISION OF HIGHWAYS

**PROPOSED  
HIGHWAY PLANS**

FAP ROUTES 760 & 758 (IL 32)

SECTION (M-15D, 27, 206, 205, 12-15D) Q

PIATT COUNTY

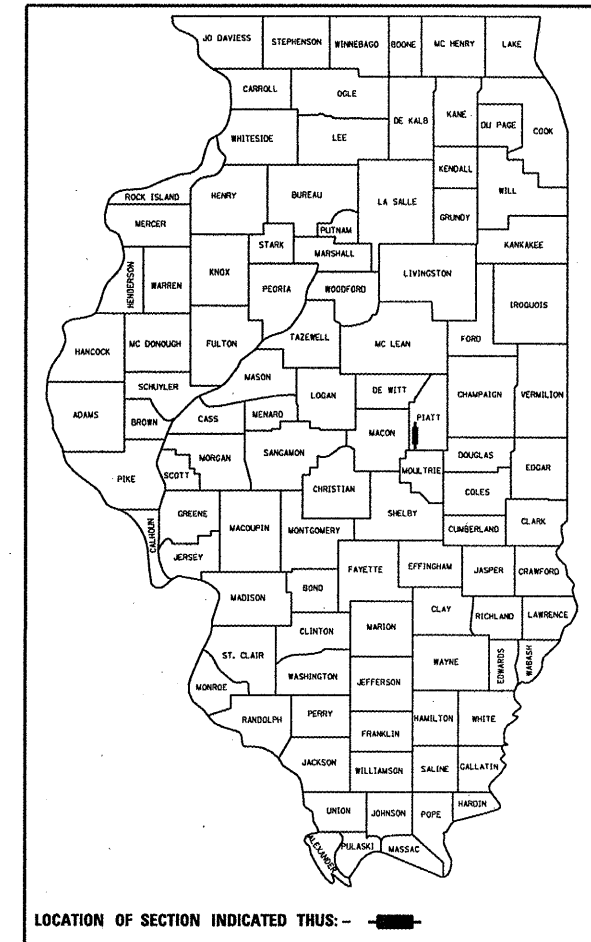
NCL OF CISCO TO NCL OF CERRO GORDO  
AND IL 105 TO U.S. 36

C-95-060-06  
MICROSURFACING

CONTRACT NO. 70543				
F.A.P. RTE.	SECTION	COUNTY	TOTAL SHEETS	SHEET NO.
.	..	PIATT	17	1

• 760 & 758  
\*\* PAVEMENT PRESERVATION 2006

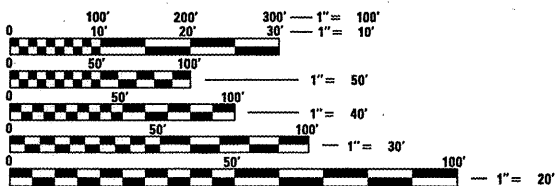
D-95-059-06



FOR INDEX OF SHEETS, SEE SHEET NO. 2  
FOR SUMMARY OF QUANTITIES, SEE SHEET NO. 4

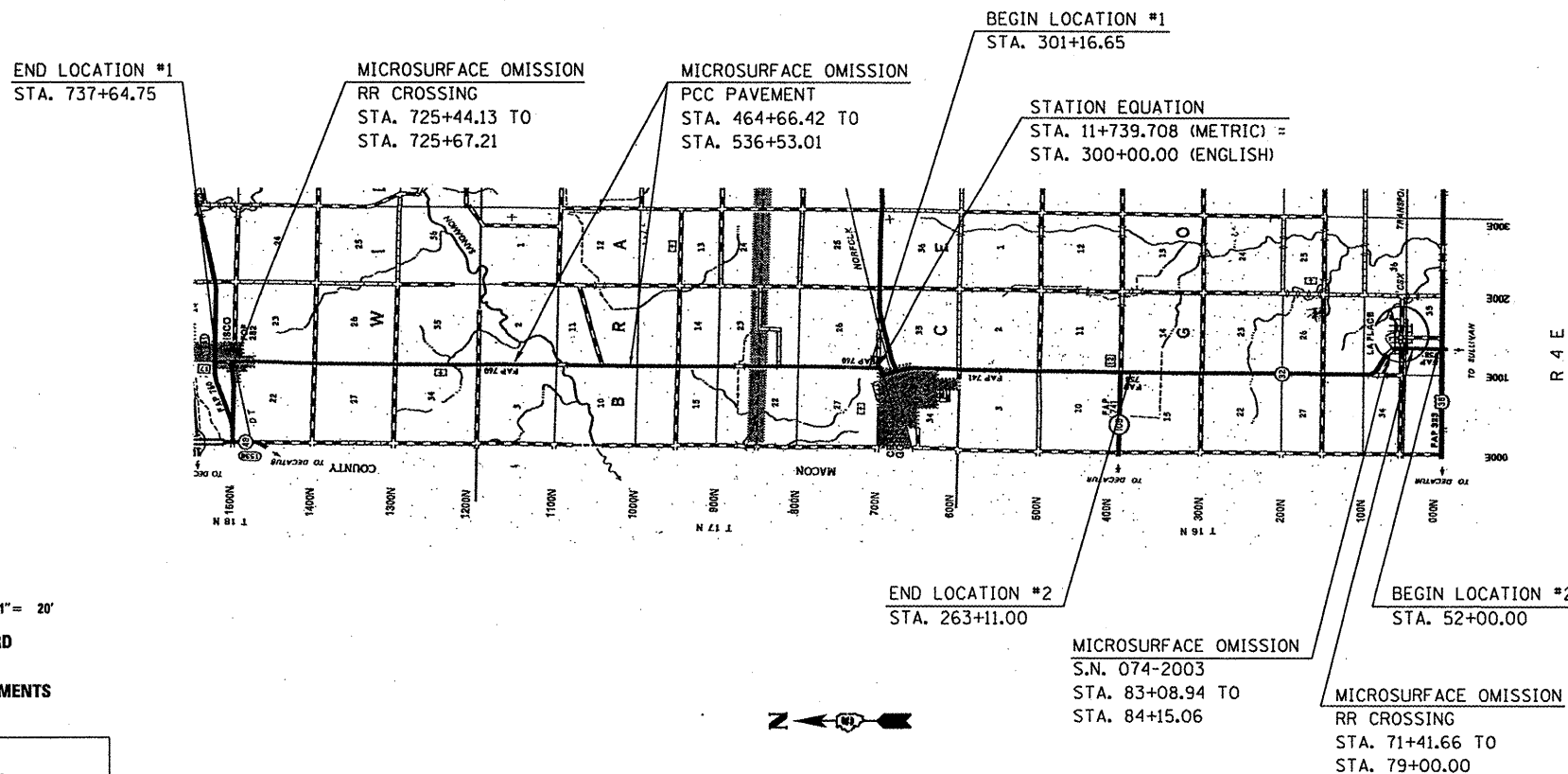
**CURRENT ADT**  
1,550 (2005) SU %=10% MU %=18.5%

**DESIGN DESIGNATION**  
MINOR ARTERIAL



FULL SIZE PLANS HAVE BEEN PREPARED USING STANDARD ENGINEERING SCALES. REDUCED SIZED PLANS WILL NOT CONFORM TO STANDARD SCALES. IN MAKING MEASUREMENTS ON REDUCED PLANS, THE ABOVE SCALES MAY BE USED.

J.U.L.I.E.  
JOINT UTILITY LOCATION INFORMATION FOR EXCAVATION  
1-800-892-0123 WILLOW, BRANCH & CERRO GORDO TOWNSHIPS



TOTAL LENGTH OF SECTION & PROJECT = 64,759.10 FEET = 12.265 MILES  
NET LENGTH OF SECTION & PROJECT = 56,684.97 FEET = 10.736 MILES

STATE OF ILLINOIS  
DEPARTMENT OF TRANSPORTATION  
DIVISION OF HIGHWAYS

SUBMITTED *Memo 31 20 06*

*[Signature]*  
DEPUTY DIRECTOR OF HIGHWAYS, REGION ENGINEER

*May 12, 20 06*  
*[Signature]*  
ENGINEER OF DESIGN AND ENVIRONMENT

*May 12, 20 06*  
*[Signature]*  
DIRECTOR OF HIGHWAYS, CHIEF ENGINEER

**PRINTED BY THE AUTHORITY  
OF THE STATE OF ILLINOIS**

DESIGNER: BRIAN J. HOGAN  
 SQUAD LEADER: NANCY FASIG  
 PROJECT ENGINEER: KENSIL GARNETT  
 (217)465-4181  
 PLOT DATE = 5/11/2006  
 FILE NAME = c:\nrc\projects\0505906 (v8)\plan.dgn  
 PLOT SCALE = 43.2335 / IN.  
 USER NAME = plersobr

CONTRACT NO. 70543