

(217)465-4181

PROJECT ENGINEER: KENSIL GARNETT

SQUAD LEADER: CORY SHEEHY

DESIGNER: CORY SHEEHY

FAS ROUTE	SECTION	COUNTY	TOTAL SHEETS	SHEET NO.
1517	10B	DEWITT	26	1

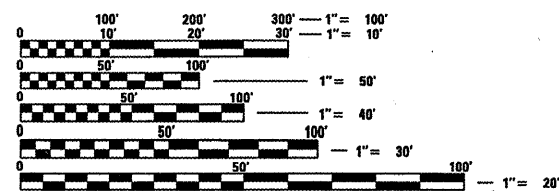
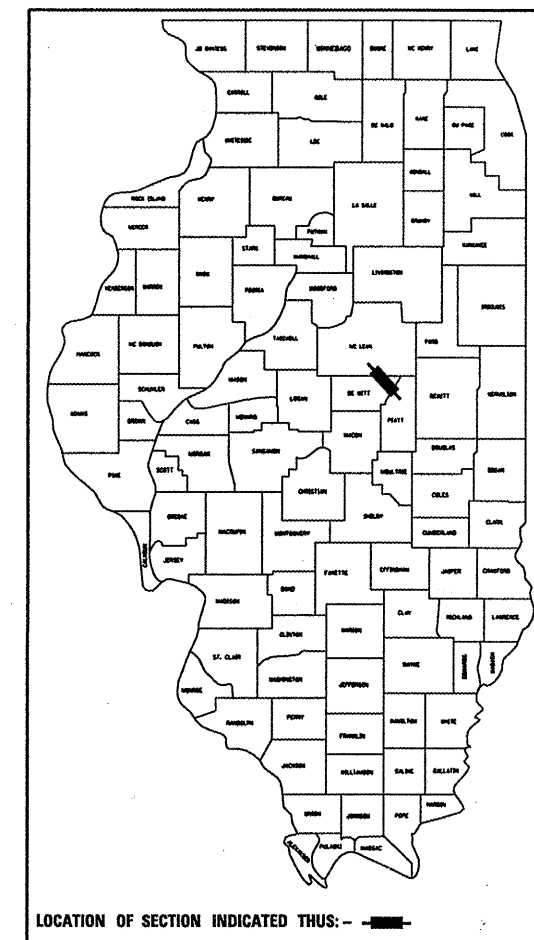
CONTRACT NO. 70549
D-95-064-06

STATE OF ILLINOIS
DEPARTMENT OF TRANSPORTATION
DIVISION OF HIGHWAYS
**PLANS FOR PROPOSED
HIGHWAY IMPROVEMENT**

FOR INDEX OF SHEETS, SEE SHEET NO. 2
FOR SUMMARY OF QUANTITIES, SEE SHEET NO. 4-5

**FAS ROUTE 1517 (US-150)
SECTION 10B
DEWITT COUNTY**

C-95-064-06
CULVERT REPLACEMENT

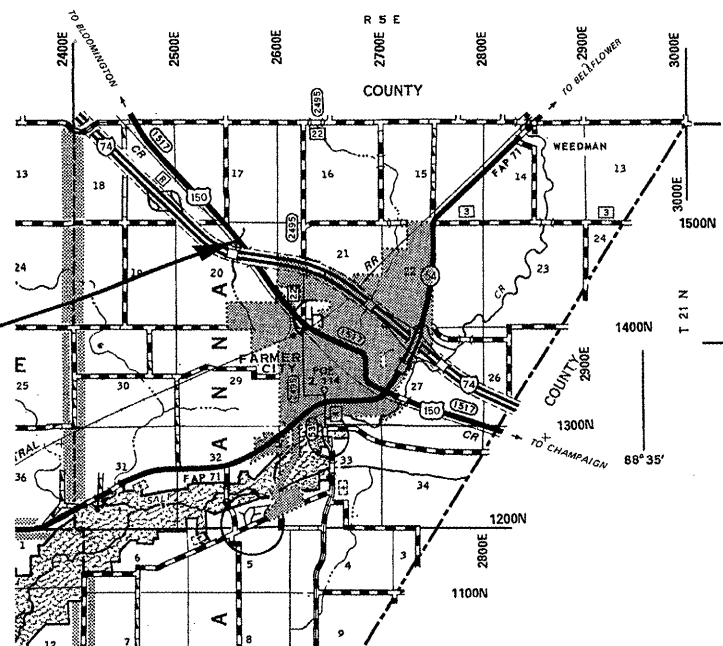


FULL SIZE PLANS HAVE BEEN PREPARED USING STANDARD ENGINEERING SCALES. REDUCED SIZED PLANS WILL NOT CONFORM TO STANDARD SCALES. IN MAKING MEASUREMENTS ON REDUCED PLANS, THE ABOVE SCALES MAY BE USED.

DESIGN DESIGNATION
RURAL MAJOR COLLECTOR
ADT = 1200

PROPOSED STR. # 020-2013
PRECAST CONCRETE BOX CULVERT
DOUBLE 10' X 4' X 38'
W/ CAST IN PLACE
L-TYPE WINGWALLS
U. S. F. L. = 725.05
D. S. F. L. = 724.98
STA. 182+45

EXISTING STR. # 020-8038
TO BE REMOVED
CAST IN PLACE
CONCRETE BOX CULVERT
10' X 3'-6" X 34'
W/ CAST IN PLACE END SECTIONS
STA. 182+45



TOTAL LENGTH OF SECTION & PROJECT = 280.0 FEET = 0.053 MILES
NET LENGTH OF SECTION & PROJECT = 280.0 FEET = 0.053 MILES

STATE OF ILLINOIS
DEPARTMENT OF TRANSPORTATION
DIVISION OF HIGHWAYS

SUBMITTED 3/28 20 06
Joseph E. Crowe
DEPUTY DIRECTOR OF HIGHWAYS, REGION THREE ENGINEER

May 12, 20 06
Mike Hine
ENGINEER OF DESIGN AND ENVIRONMENT

May 12, 20 06
Milton R. See
DIRECTOR OF HIGHWAYS, CHIEF ENGINEER

FOR UNDERGROUND UTILITY LOCATIONS CALL TOLL FREE J.U.L.I.E. TELEPHONE NO. 1-800-892-0123
SANTA ANNA TOWNSHIP

U.S. DEPARTMENT OF TRANSPORTATION
FEDERAL HIGHWAY ADMINISTRATION

APPROVED _____
DIVISION ADMINISTRATOR DATE

CONTRACT NO. 70549

DEWITT COUNTY SECTION 10B FAS ROUTE 1517

PRINTED BY AUTHORITY OF THE STATE OF ILLINOIS

HIGHWAY STANDARDS

<u>STANDARD NUMBER</u>	<u>NAME OF STANDARD</u>
000001-04	STANDARD SYMBOLS, ABBREVIATIONS, AND PATTERNS
001006	DECIMAL OF AN INCH AND A FOOT
001001	AREAS OF REINFORCEMENT BARS
280001-02	TEMPORARY EROSION CONTROL SYSTEMS
442201-01	CLASS C & D PATCHES
515001-02	NAME PLATE FOR BRIDGES
630001-06	STEEL PLATE BEAM GUARDRAIL
630101-06	GUARDRAIL MOUNTED ON EXISTING CULVERT
630301-03	SHOULDER WIDENING FOR TYPE 1, (SPECIAL) GUARDRAIL TERMINALS
635006-02	REFLECTOR AND TERMINAL MARKER PLACEMENT
635011-01	REFLECTOR MARKER AND MOUNTING DETAILS
667101	PERMANENT SURVEY MAKERS
701001-01	TRAFFIC CONTROL AND PROTECTION
701006-02	TRAFFIC CONTROL AND PROTECTION
701101-01	TRAFFIC CONTROL AND PROTECTION
701301-02	TRAFFIC CONTROL AND PROTECTION
701311-02	TRAFFIC CONTROL AND PROTECTION
701306-01	TRAFFIC CONTROL AND PROTECTION
702001-06	TRAFFIC CONTROL DEVICES
780001-01	TYPICAL PAVEMENT MARKINGS

INDEX OF SHEETS

<u>PAGE</u>	<u>DESCRIPTION</u>
1	COVER SHEET
2	INDEX OF SHEETS
2	HIGHWAY STANDARDS
3	GENERAL NOTES
4&5	SUMMARY OF QUANTITIES
6	TYPICAL CROSS SECTIONS
7	SCHEDULE OF QUANTITIES
8	CENTERLINE ALIGNMENT TIEPOINTS
9	PLAN AND PROFILE SHEET
10	PROPOSED COLLAR DESIGN DETAIL
11	PROPOSED L-TYPE WINGWALL DESIGN DETAIL
12	DETAIL OF POROUS GRANULAR BACKFILL DETAIL
13	SIGNING FOR ROAD CLOSURE DETAIL-NORTH
14	SIGNING FOR ROAD CLOSURE DETAIL-SOUTH
15	TYPICAL APPLICATION OF TRAFFIC CONTROL DEVICES FOR ROAD CLOSURE
16-19	TYPICAL APPLICATIONS OF PAVEMENT MARKINGS AND MARKERS
20-26	CROSS SECTIONS

F.A.P. RTE.	SECTION	COUNTY	TOTAL SHEETS	SHEET NO.
1517	10B	DEWITT	26	2

CONTRACT NO. 70549

F.A.S. RTE.	SECTION	COUNTY	TOTAL SHEETS	SHEET NO.
1517	10B	DEWITT	26	3

CONTRACT NO. 70549

GENERAL NOTES

G. N. -100

ENGLISH UNITS OF MEASUREMENT SHALL GOVERN OVER AND SUPERSEDE ANY METRIC UNITS SHOWN IN THIS CONTRACT. WHERE INCLUDED, METRIC UNITS ARE FOR INFORMATION ONLY.

G. N. -105.09A

ALL ELEVATIONS SHOWN IN THE PLANS ARE BASED ON NORTH AMERICAN VERTICAL DATUM OF 1988. (NAVD 88)

G. N. -107.31

UTILITY LINES WERE PLOTTED FROM INFORMATION FURNISHED BY THE VARIOUS UTILITY COMPANIES INVOLVED (QUALITY LEVEL C &/OR QUALITY LEVEL D) AND THE ACCURACY SHOULD BE CONSIDERED APPROXIMATE ONLY.

UTILITY COMPANIES MAY BE ADJUSTING THEIR FACILITIES DURING CONSTRUCTION. THE CONTRACTOR SHALL COOPERATE WITH THESE ORGANIZATIONS WHILE THESE ADJUSTMENTS ARE BEING PERFORMED.

J. U. L. I. E. - JOINT UTILITY LOCATION INFORMATION FOR EXCAVATORS SYSTEM (800)892-0123.

G. N. -250C SPL

TEMPORARY EROSION CONTROL SEEDING IS INCLUDED IN THIS CONTRACT TO SEED NEW EARTH SHOULDERS DURING TIME PERIODS WHEN PERMANENT SEEDING IS NOT ALLOWED. SOME OR ALL OF THE TEMPORARY EROSION CONTROL SEEDING WILL BE DELETED IF IT IS POSSIBLE TO PLACE PERMANENT SEEDING ON EARTH SHOULDERS AT THE TIME OF THEIR COMPLETION.

G. N. -406H

MIXTURE REQUIREMENTS

The following mixture requirements are applicable for this project:

Location(s):	US 150	US 150
Mixture Use(s):	CLASS D PATCH BOTTOM 8"	CLASS D PATCH TOP 2"
AC/PG:	PG 64-22	PG 64-22
RAP% (MAX):	25%	15%
Design Air Voids:	4.0% Ndes=50	4.0% Ndes=50
Mixture Composition: (Gradation Mixture)	IL 19.0	IL 9.5
Friction Aggregate:	N. A.	MIX C

G. N. -540

THE CONTRACTOR SHALL ASSEMBLE AND MATCH-MARK THE PRECAST BOX CULVERT SECTIONS AND END SECTIONS PRIOR TO SHIPMENT OF THESE COMPONENTS FROM THE MANUFACTURER, AND AS DIRECTED BY THE ENGINEER IN ORDER TO SECURE A PROPER FIT ON EACH JOINT. ANY SECTIONS OR END SECTIONS WHICH DO NOT PROVIDE A PROPER FIT AT THE JOINT SHALL BE REJECTED BY THE ENGINEER AND REPLACED BY THE CONTRACTOR WITH NO ADDITIONAL COMPENSATION BEING ALLOWED. THIS WORK WILL NOT BE PAID FOR SEPARATELY, BUT SHALL BE INCLUDED IN THE CONTRACT UNIT PRICE PER FOOT FOR PRECAST CONCRETE BOX CULVERTS OF THE SIZE SPECIFIED.

G. N. •540A

L-TYPE WINGWALLS, HEADWALLS, AND COLLARS ARE REQUIRED FOR PRECAST BOX CULVERTS. SHOP PLANS WILL NOT BE REQUIRED WITH CAST IN PLACE ITEMS CONSTRUCTED AS SHOWN IN THE PLANS. SHOP PLANS SHALL BE SUBMITTED FOR CHANGED OR MODIFIED CAST IN PLACE DETAILS IN ACCORDANCE WITH ARTICLE 540.06.

G. N. -703A

SHORT TERM PAVEMENT MARKING SHALL BE APPLIED TO THE PAVEMENT AFTER ANY OF THE FOLLOWING: COLD MILLING AND/OR PLACING BITUMINOUS MATERIALS (PRIME COAT), LEVELING BINDER (MACHINE METHOD), BINDER AND SURFACE COURSES. SHORT TERM PAVEMENT MARKING PLACED ON THE SURFACE, SHALL COINCIDE WITH THE FINAL PAVEMENT STRIPING. SHORT TERM PAVEMENT MARKING PLACED PRIOR TO THE SURFACE SHALL COINCIDE WITH THE EXISTING PAVEMENT MARKINGS. USE 4 FEET PER 40 FEET (OR 10% PER STATION).

G. N. -1004.01

COARSE AGGREGATE GRADATION CA-10 MAY BE USED WHENEVER COARSE AGGREGATE CA-6 IS SPECIFIED IN THE STANDARD SPECIFICATIONS.

G. N. -Z0038

AN ALUMINUM TABLET OF THE TYPE SHOWN ON STANDARD 667101 SHALL BE PLACED ON THE PROPOSED STRUCTURE AS DIRECTED BY THE ENGINEER. THE BENCH MARK ELEVATION WILL BE ESTABLISHED AND MARKED BY THE DEPARTMENT. THIS WORK WILL BE PAID FOR AT THE CONTRACT UNIT PRICE EACH FOR PERMANENT BENCH MARKS. INSTALL ON COLLAR NEAR NAME PLATE.

SUMMARY OF QUANTITIES

LOCATION: FAS 1517
 182+25
 TO
 182+65
 100% STATE
 RURAL TWO LANE
 CONST. CODE: X028-2A
 TOTAL
 QUANTITY

F.A.S. RTE.	SECTION	COUNTY	TOTAL SHEETS	SHEET NO.
1517	10B	DEWITT	26	4

CONTRACT NO. 70549

<u>CODE NO</u>	<u>ITEM</u>	<u>UNIT</u>	<u>QUANTITY</u>
20200100	EARTH EXCAVATION	CU YD	20.0
20400800	FURNISHED EXCAVATION	CU YD	175.0
20900110	POROUS GRANULAR BACKFILL	CU YD	50.0
21301048	EXPLORATION TRENCH 48"	FEET	300.0
25000200	SEEDING, CLASS 2	ACRE	0.2
25000400	NITROGEN FERTILIZER NUTRIENT	POUND	18.0
25000500	PHOSPHORUS FERTILIZER NUTRIENT	POUND	18.0
25000600	POTASSIUM FERTILIZER NUTRIENT	POUND	18.0
25100115	MULCH, METHOD 2	ACRE	0.2
28000250	TEMPORARY EROSION CONTROL SEEDING	POUND	20.0
28000300	TEMPORARY DITCH CHECKS	EACH	4.0
28000400	PERIMETER EROSION BARRIER	FOOT	147.0
44201771	CLASS D PATCHES, TYPE IV, 10 INCH	SQ YD	116.0
48101200	AGGREGATE SHOULDERS, TYPE B	TON	29.0
50100100	REMOVAL OF EXISTING STRUCTURES	EACH	1.0
50200100	STRUCTURE EXCAVATION	CU YD	160.0
51500100	NAME PLATES	EACH	1.0
54001000	BOX CULVERT END SECTIONS	EACH	2.0
54002020	EXPANSION BOLTS 3/4 INCH	EACH	80.0
54021004	PRECAST CONCRETE BOX CULVERT 10' X 4' (M273)	FOOT	76.0

SUMMARY OF QUANTITIES

LOCATION: FAS 1517
 182+25
 TO
 182+65
 100% STATE
 RURAL TWO LANE
 CONST. CODE: X028-2A
 TOTAL
 QUANTITY

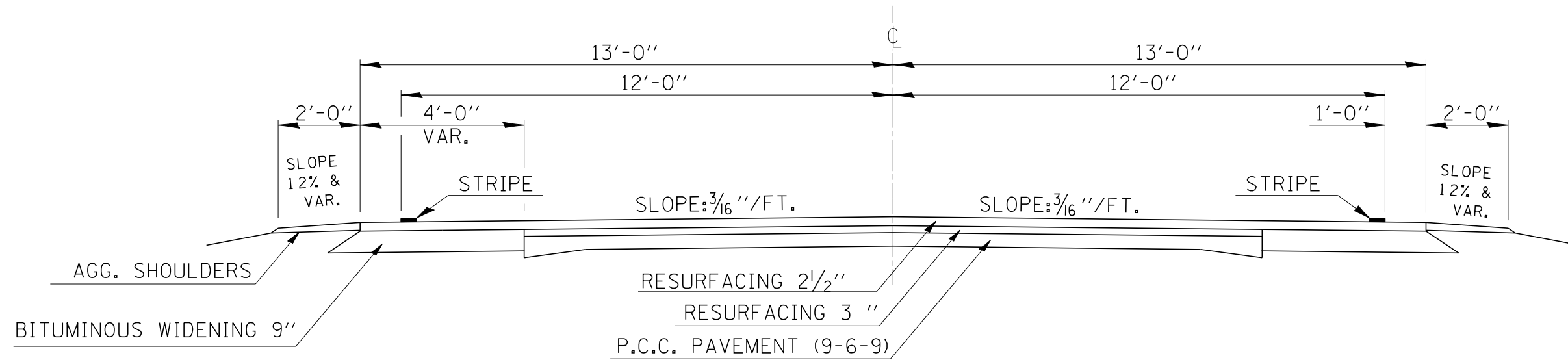
F.A.S. RTE.	SECTION	COUNTY	TOTAL SHEETS	SHEET NO.
1517	10B	DEWITT	26	5
CONTRACT NO.			70549	

CODE NO	ITEM	UNIT	QUANTITY
• 63000005	STEEL PLATE BEAM GUARD RAIL, TYPE B	FOOT	50.0
• 63000025	STEEL PLATE BEAM GUARD RAIL, ATTACHED TO STRUCTURES	FOOT	75.0
• 63100167	TRAFFIC BARRIER TERMINAL TYPE 1, SPECIAL (TANGENT)	EACH	4.0
63200310	GUARDRAIL REMOVAL	FOOT	200.0
67100100	MOBILIZATION	L SUM	1.0
70100460	TRAFFIC CONTROL AND PROTECTION, STANDARD 701306	L SUM	1.0
70101800	TRAFFIC CONTROL AND PROTECTION (SPECIAL)	L SUM	1.0
70300100	SHORT-TERM PAVEMENT MARKING	FOOT	8.0
70300625	TEMPORARY PAINT PAVEMENT MARKING LINE 4"	FOOT	100.0
70301000	WORK ZONE PAVEMENT MARKING REMOVAL	SO FT	3.0
• 78001110	PAINT PAVEMENT MARKING - LINE 4"	FOOT	100.0
• 78200405	GUARDRAIL MARKERS	EACH	8.0
• 78201000	TERMINAL MARKER - DIRECT APPLIED	EACH	4.0
Z0038700	PERMANENT BENCH MARKS	EACH	1.0
•	SPECIALITY ITEMS		

F.A.S. RTE.	SECTION	COUNTY	TOTAL SHEETS	SHEET NO.
1517	10B	DEWITT	26	6
STA.		TO STA.		
FED. ROAD DIST. NO.	ILLINOIS	FED. AID PROJECT		

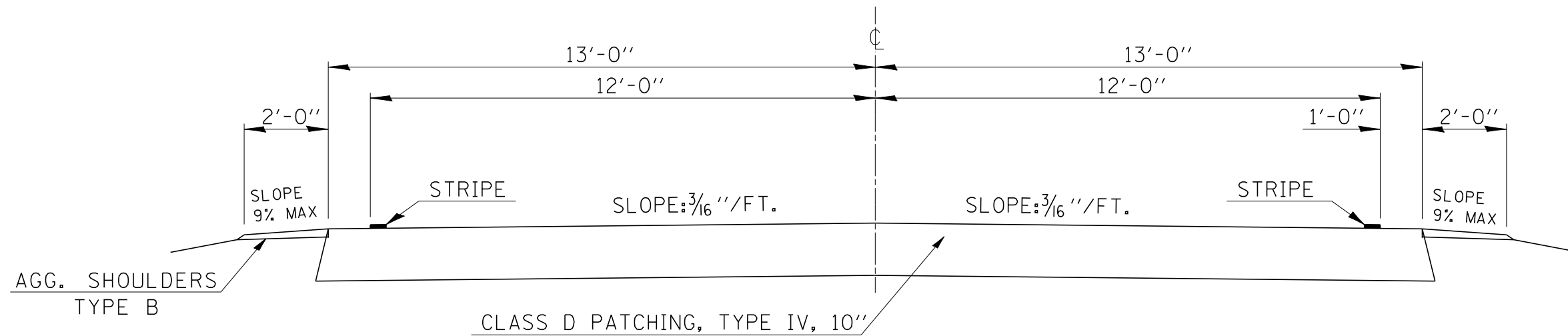
EXISTING ROADWAY CROSS SECTION

STA. 182+25.00 to STA. 182+65.00



PROPOSED ROADWAY CROSS SECTION

STA. 182+25.00 to STA. 182+65.00



PLOT DATE = 3/30/2006
 FILE NAME = c:\projects\4596406 (v8)\design\70549.dgn
 PLOT SCALE = 4.23525 / IN.
 USER NAME = sheehygm

REVISIONS	
NAME	DATE

ILLINOIS DEPARTMENT OF TRANSPORTATION

SCALE: VERT.
HORIZ.
DATE

DRAWN BY
CHECKED BY

SCHEDULE OF QUANTITIES

EARTHWORK ANALYSIS

LOCATION	EARTH EXCAVATION CU YD	EARTH EXC ADJ FOR SHRINKAGE	EMBANKMENT CU YD	BALANCE (-) FILL CU YD (2)
LT STA 181+00 TO LT STA 183+75	0.6	0.5	72	-71.63
RT STA 181+00 TO RT STA 183+75	15.1	11.3	113	-101.45
SUB-TOTAL	15.7	11.8	184.9	-173.08
TOTAL	20		185	175

NOTES:

- 1- NO SHRINKAGE FACTOR APPLIED TO THE EMBANKMENT QUANTITY
- 2- A 25% EXPANSION FACTOR WAS USED IN COMPUTING BORROW QUANTITY

20 CUYDS EARTH EXCAVATION
175 CUYDS FURNISH EXCAVATION

SEEDING SCHEDULE

LEFT STATION	WIDTH FEET	DISTANCE BETWEEN X-SEC	AREA	RIGHT STATION	WIDTH FEET	DISTANCE BETWEEN X-SEC	AREA
STA. 181+00.00	0.0	25	0.0	STA. 181+00.00	0.0	25	273.1
STA. 181+25.00	0.0	3	0.0	STA. 181+25.00	21.9	3	66.8
STA. 181+28.00	0.0	22	164.3	STA. 181+28.00	22.7	22	494.6
STA. 181+50.00	14.9	25	381.4	STA. 181+50.00	22.3	25	569.5
STA. 181+75.00	15.6	25	390.0	STA. 181+75.00	23.3	25	591.0
STA. 182+00.00	15.6	25	449.9	STA. 182+00.00	24.0	25	612.8
STA. 182+25.00	20.4	20	311.6	STA. 182+25.00	25.0	20	377.9
STA. 182+45.00	10.8	5	44.7	STA. 182+45.00	12.8	5	67.5
STA. 182+50.00	7.1	25	281.0	STA. 182+50.00	14.2	25	478.1
STA. 182+75.00	15.4	25	383.8	STA. 182+75.00	24.1	25	586.9
STA. 183+00.00	15.3	25	390.5	STA. 183+00.00	22.9	25	556.3
STA. 183+25.00	15.9	25	402.6	STA. 183+25.00	21.6	25	270.0
STA. 183+50.00	16.3	25	203.4	STA. 183+50.00	0.0		
STA. 183+75.00	0.0						
TOTAL AREA (LEFT) 3,403.1				TOTAL AREA (RIGHT) 4,944.3			

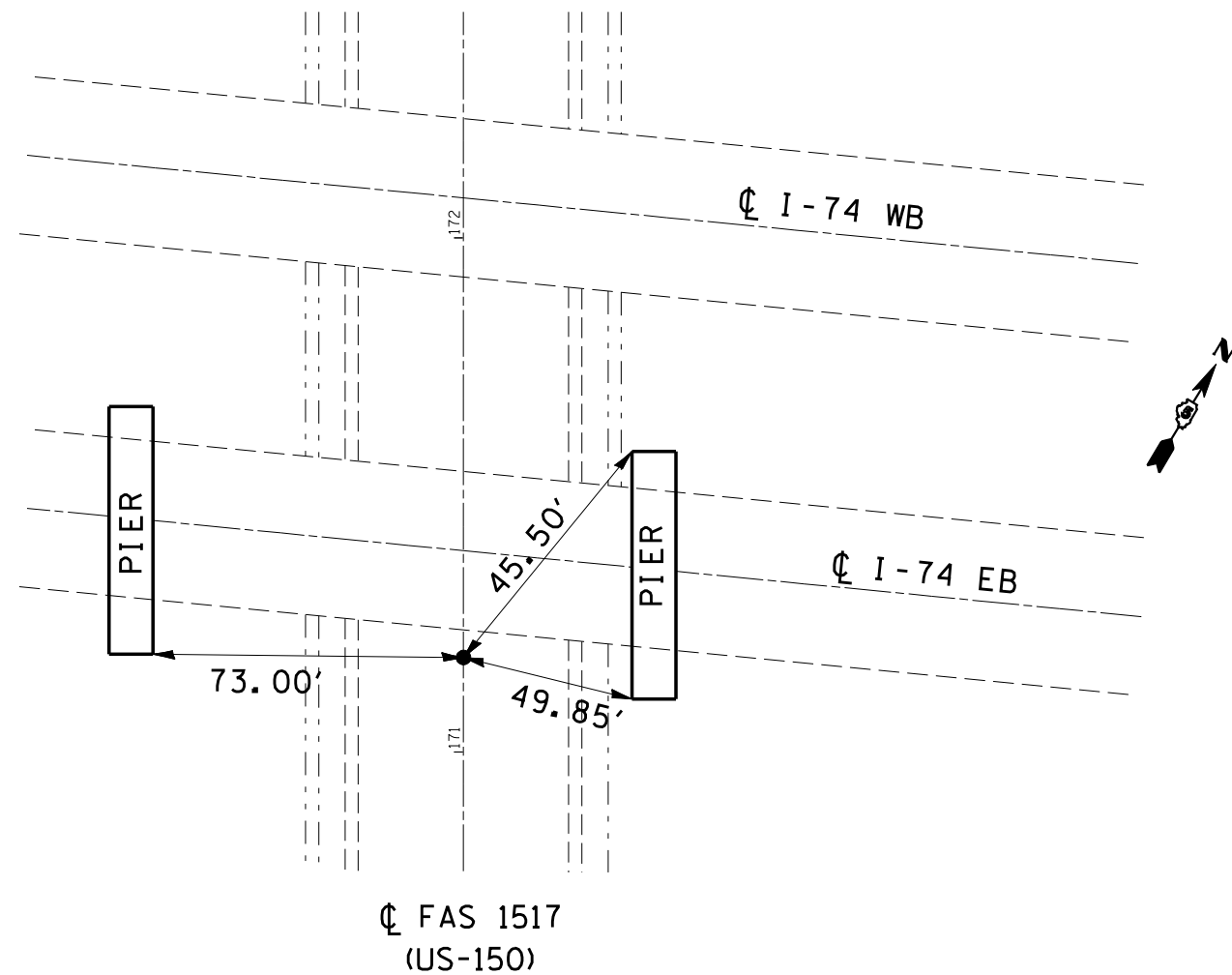
TOTAL AREA 8,347.5 SQ FT
0.2 ACRES

PAY ITEM	RATE	QUANTITY
*NITROGEN FERTILIZER NUTRIENT	90 LBS/ACRE	18.0 POUND
*PHOSPHORUS FERTILIZER NUTRIENT	90 LBS/ACRE	18.0 POUND
*POTASSIUM FERTILIZER NUTRIENT	90 LBS/ACRE	18.0 POUND
*TEMPORARY EROSION CONTROL SEEDING	100 LBS/ACRE	20.0 POUND
*FOR LOCATIONS SEE SEEDING SCHEDULE		

F.A.S. RTE.	SECTION	COUNTY	TOTAL SHEETS	SHEET NO.
1517	10B	DEWITT	26	8

CENTERLINE ALIGNMENT TIES

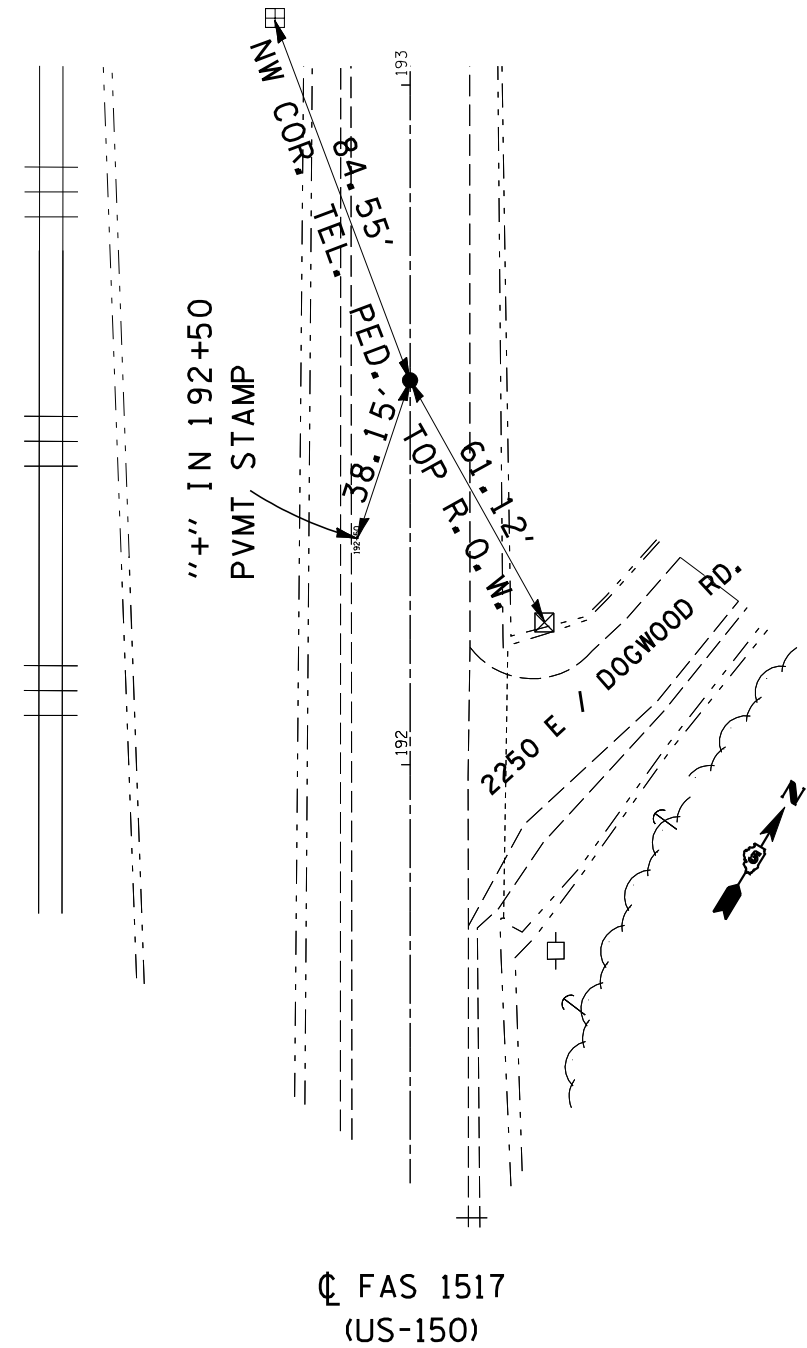
POT #1
STATION 171+03.831



SEE SURVEY BOOK 4744 PG. 5-3 NOT TO SCALE

CENTERLINE ALIGNMENT TIES

POT #2
STATION 192+84.80



SEE SURVEY BOOK 4744 PG. 5-3 NOT TO SCALE

F.A.S. RTE.	SECTION	COUNTY	TOTAL SHEETS	SHEET NO.
1517	10B	DEWITT	69	9

SPBGR TY B

O/S STA	TO STA	FT
LT 182+63.74	182+88.74	25
RT 182+01.24	182+26.24	25
TOTAL		50 FT

TR BAR TRM TI SPL TAN

O/S STA	TO STA	STA	EACH
LT 181+76.24	182+26.24	1	1
LT 182+88.74	183+38.74	1	1
RT 181+51.24	182+01.24	1	1
RT 182+63.74	183+13.75	1	1
TOTAL			4 EACH

SPBGR ATTACH TO STR

O/S STA	TO STA	STA	FT
LT 182+26.24	182+63.74	37.5	
RT 182+26.24	182+63.74	37.5	
TOTAL		75.0 FT	

EXPLORATION TRENCH

O/S STA.	TO STA.	LENGTH
RT. 181+00	184+00	300.0 FT
TOTAL		300.0 FT

TEMPORARY DITCH CHECKS

O/S STA	STA	EACH
22'	LT 181+45	1
22'	RT 181+16	1
22'	LT 181+70	1
22'	RT 181+72	1
TOTAL 4 EACH		

TERMINAL MARKERS-DIRECT APPLIED

O/S STA	EACH
RT 181+51.24	1
LT 181+76.24	1
RT 183+13.75	1
LT 183+38.74	1
TOTAL 4 EACH	

GUARDRAIL MARKERS

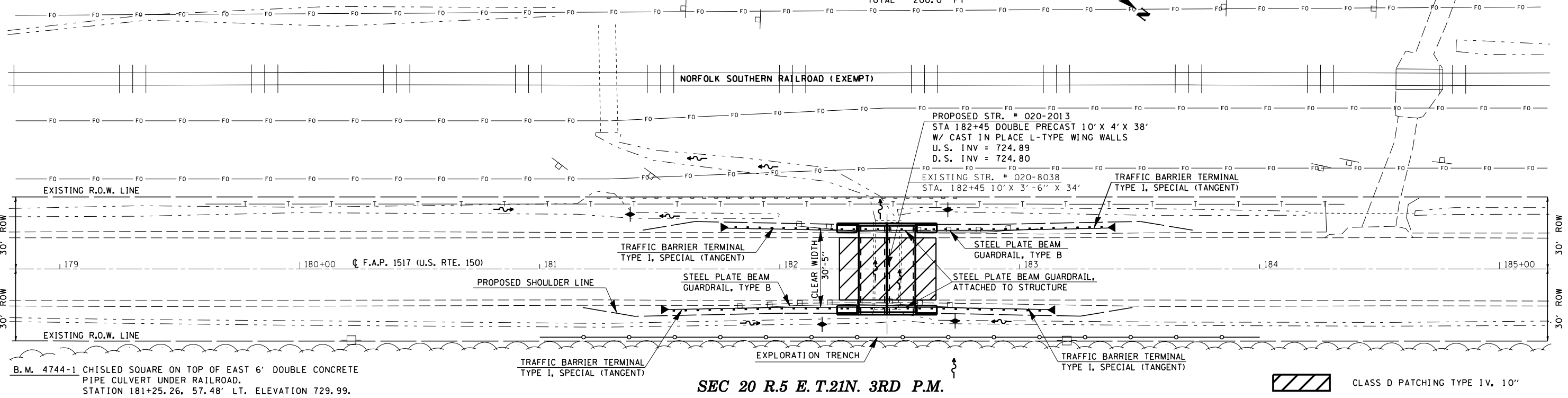
O/S STA	TO STA	EACH
LT 181+76.24	183+38.74	4
RT 181+51.24	183+13.75	4
TOTAL		8 EACH

PERIMETER EROSION BARRIER

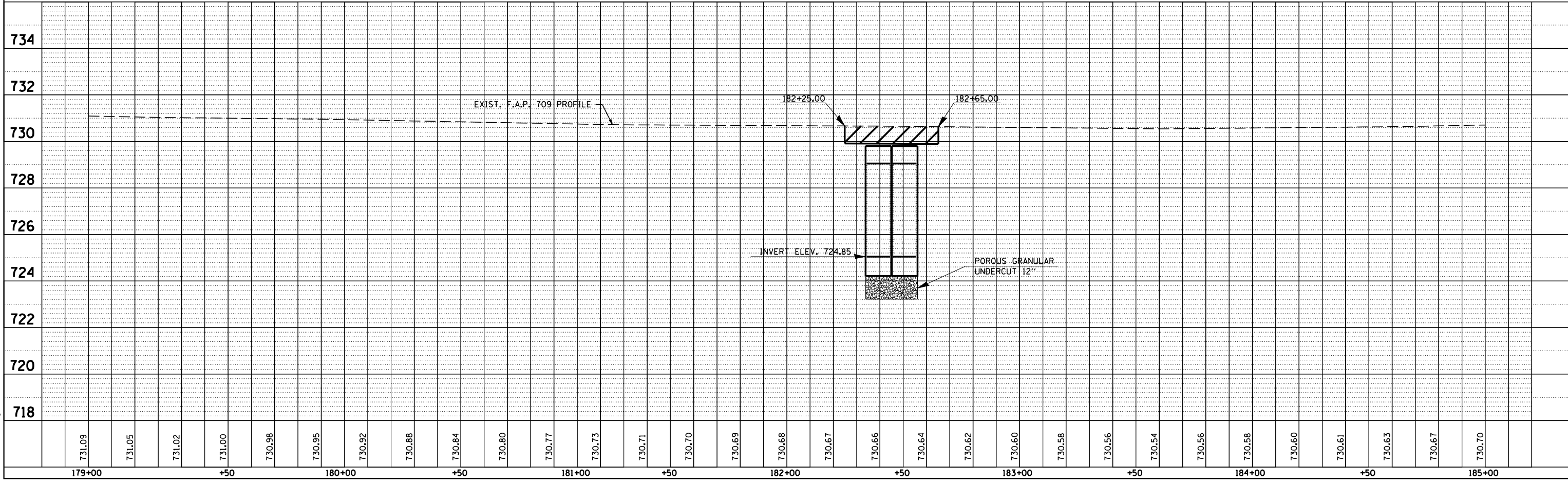
LT STA.	TO STA.	LENGTH
181+28	182+75	147.0 FEET

GUARDRAIL REMOVAL

O/S STA.	TO STA.	LENGTH
LT. 182+07	183+07	100.0 FT
RT. 181+82	182+82	100.0 FT
TOTAL		200.0 FT



SEC 20 R.5 E. T.21N. 3RD P.M.



PLAN SURVEYED BY DATE
 PLOTTED BY DATE
 CHECKED BY DATE
 NOTE BOOK NO. DATE FILE NAME

PROFILE SURVEYED BY DATE
 PLOTTED BY DATE
 CHECKED BY DATE
 NOTE BOOK NO. DATE FILE NAME

PLOT DATE = 3/20/2006
 FILE NAME = c:\projects\0506-006\0506.dgn
 PLOT SCALE = 42.3529' / IN.
 USER NAME = sheehyem

F.A.S. RTE.	SECTION	COUNTY	TOTAL SHEETS	SHEET NO.
1517	10B	DEWITT	69	9

SPBGR TY B

O/S STA	TO STA	FT
LT 182+63.74	182+88.74	25
RT 182+01.24	182+26.24	25
TOTAL		50 FT

TR BAR TRM TI SPL TAN

O/S STA	TO STA	STA	EACH
LT 181+76.24	182+26.24	1	1
LT 182+88.74	183+38.74	1	1
RT 181+51.24	182+01.24	1	1
RT 182+63.74	183+13.75	1	1
TOTAL			4 EACH

SPBGR ATTACH TO STR

O/S STA	TO STA	STA	FT
LT 182+26.24	182+63.74	37.5	
RT 182+26.24	182+63.74	37.5	
TOTAL		75.0 FT	

EXPLORATION TRENCH

O/S STA.	TO STA.	LENGTH
RT. 181+00	184+00	300.0 FT
TOTAL		300.0 FT

TEMPORARY DITCH CHECKS

O/S STA	STA	EACH
22'	LT 181+45	1
22'	RT 181+16	1
22'	LT 181+70	1
22'	RT 181+72	1
TOTAL 4 EACH		

TERMINAL MARKERS-DIRECT APPLIED

O/S STA	EACH
RT 181+51.24	1
LT 181+76.24	1
RT 183+13.75	1
LT 183+38.74	1
TOTAL 4 EACH	

GUARDRAIL MARKERS

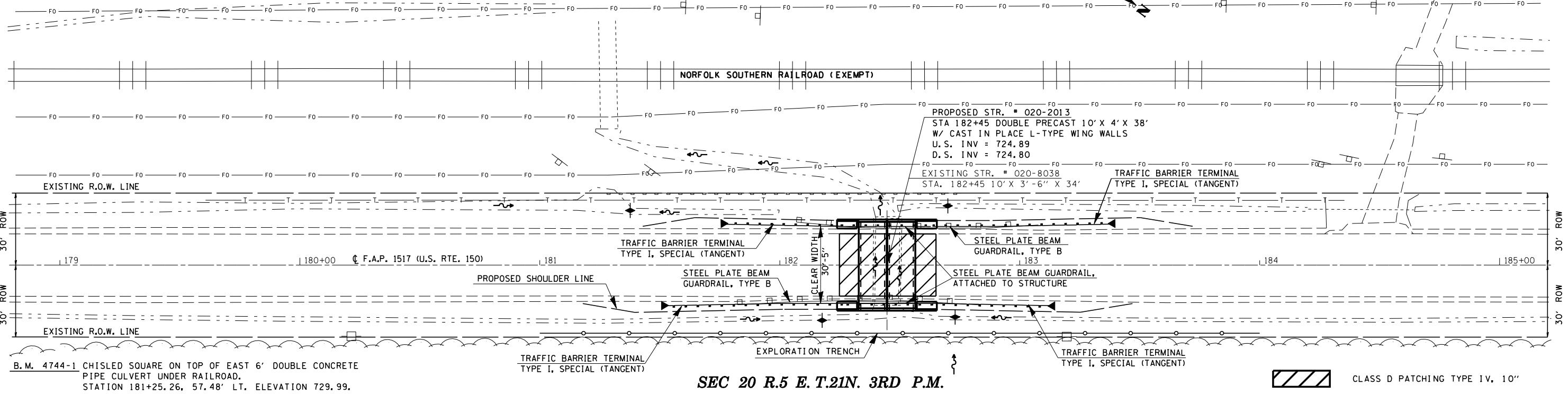
O/S STA	TO STA	EACH
LT 181+76.24	183+38.74	4
RT 181+51.24	183+13.75	4
TOTAL		8 EACH

PERIMETER EROSION BARRIER

LT STA.	TO STA.	LENGTH
181+28	182+75	147.0 FEET

GUARDRAIL REMOVAL

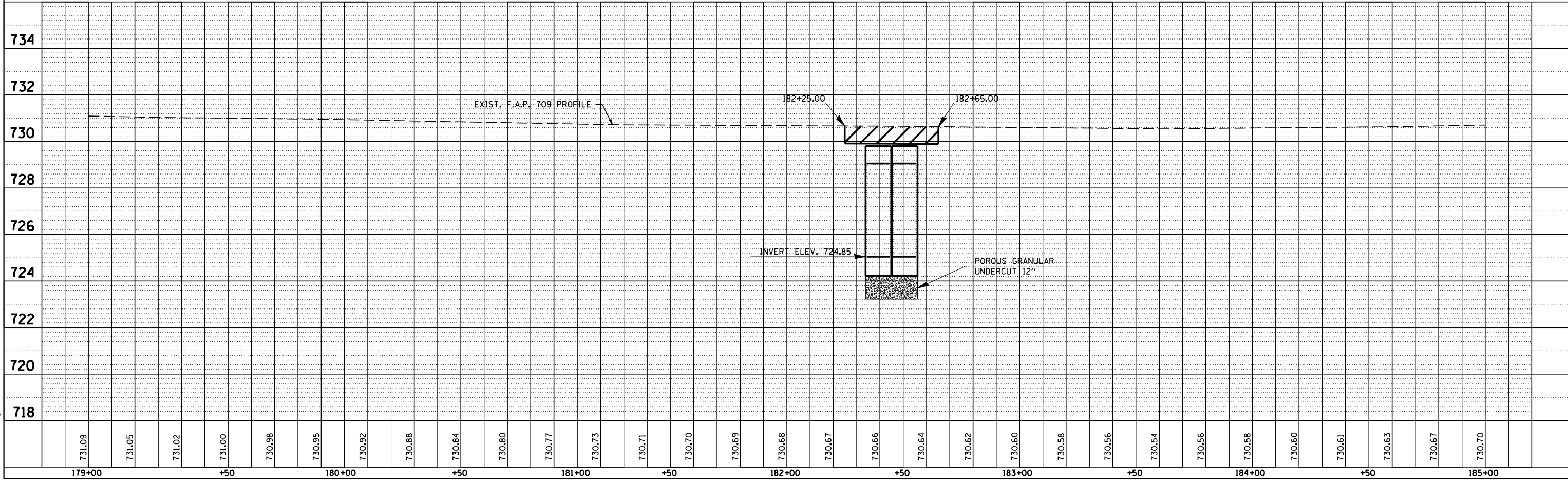
O/S STA.	TO STA.	LENGTH
LT. 182+07	183+07	100.0 FT
RT. 181+82	182+82	100.0 FT
TOTAL		200.0 FT



SEC 20 R.5 E. T.21N. 3RD P.M.

B.M. 4744-1 CHISLED SQUARE ON TOP OF EAST 6' DOUBLE CONCRETE PIPE CULVERT UNDER RAILROAD, STATION 181+25.26, 57.48' LT. ELEVATION 729.99.

CLASS D PATCHING TYPE IV, 10"



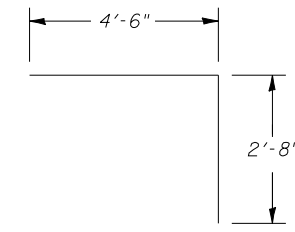
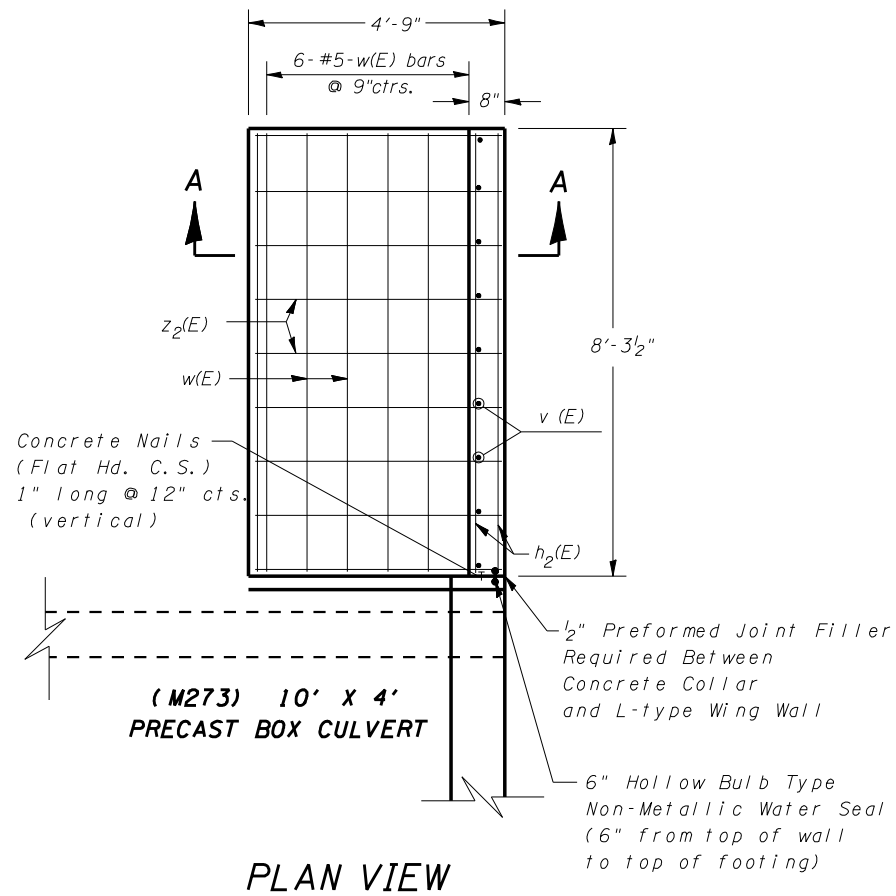
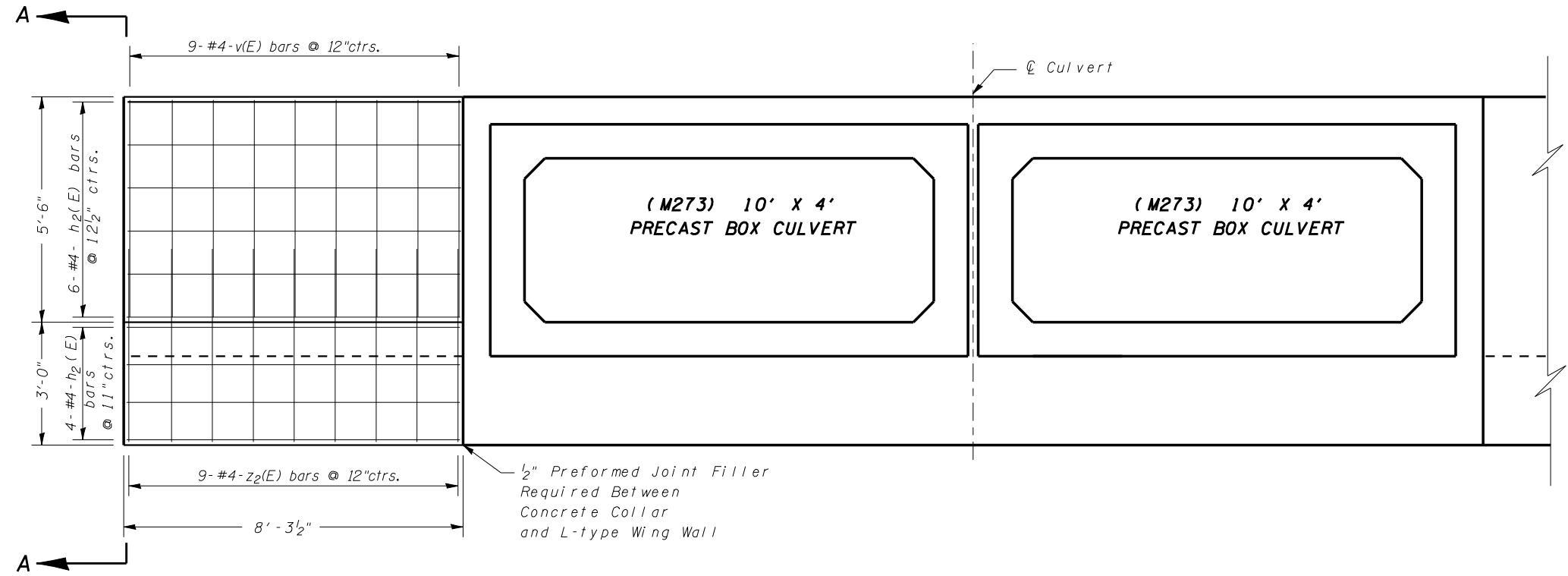
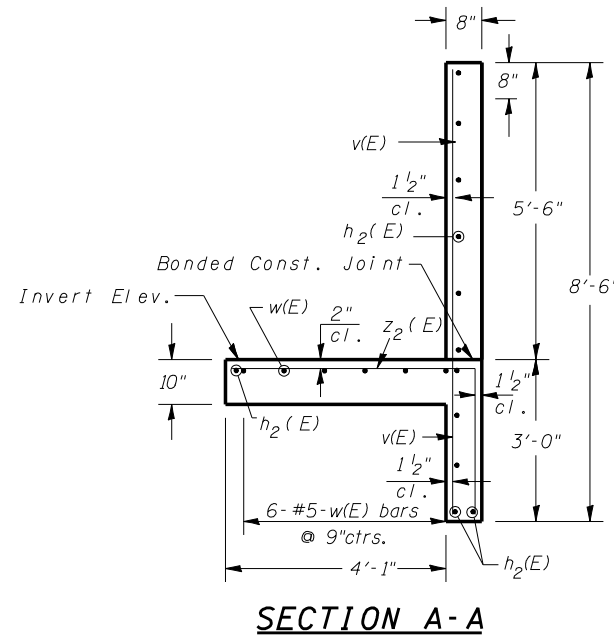
PLAN SURVEYED BY DATE
 PLOTTED BY DATE
 CHECKED BY DATE
 NOTE BOOK NO. DATE FILE NAME

PROFILE SURVEYED BY DATE
 PLOTTED BY DATE
 CHECKED BY DATE
 NOTE BOOK NO. DATE FILE NAME

PLOT DATE = 3/20/2006
 FILE NAME = c:\projects\0506-006\0506.dgn
 PLOT SCALE = 42.3529' / IN.
 USER NAME = sheehyem

F.A.S. RTE.	SECTION	COUNTY	TOTAL SHEETS	SHEET NO.
1517	10B	DEWITT	26	11
STA.		TO STA.		
FED. ROAD DIST. NO.	ILLINOIS	FED. AID PROJECT		

CAST IN PLACE L-TYPE WING WALL DESIGN N FOR (M273) DOUBLE 10' X 4' PRECAST BOX CULVERT



Bill of Material for One L-Type Wing (Two per End Section)

Bar	No.	Size	Length	Shape
h ₂ (E)	12	#4	8'-0"	—
v(E)	9	#4	8'-2"	—
w(E)	6	#5	8'-0"	—
z ₂ (E)	9	#4	7'-2"	└
S.I. Concrete		2.8	CUYDS	
Reinforcement Bars (Epoxy Coated)		210.0	LBS.	

NOTE:

All nails, joint fillers, water seals and other items necessary to complete this work shall be included in the pay item BOX CULVERT END SECTIONS, with no additional compensation allowed.

REVISIONS	
NAME	DATE

ILLINOIS DEPARTMENT OF TRANSPORTATION
 Designed By: EDG 3/13/06
 Checked By: KAG 3/15/06

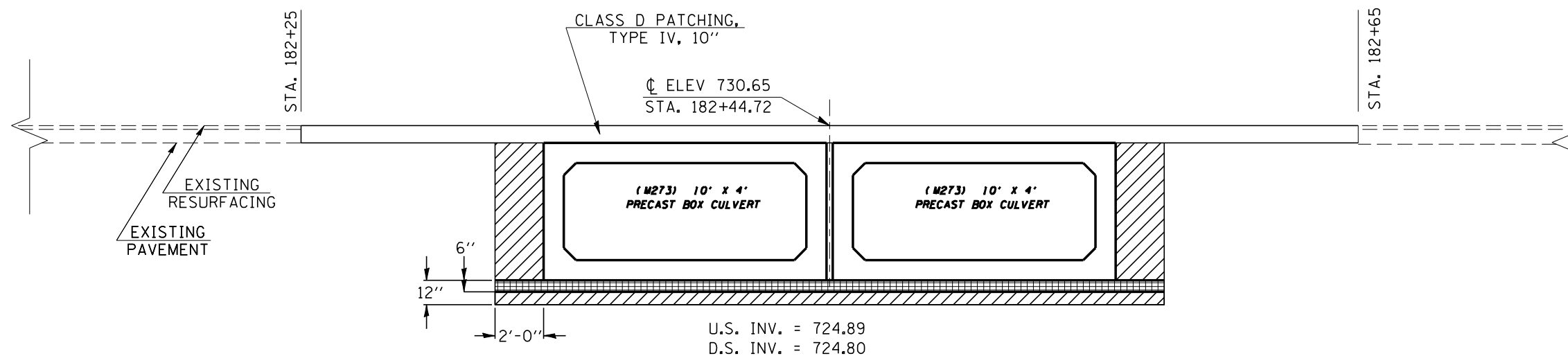
SCALE: VERT.
 HORIZ.
 DATE

DRAWN BY
 CHECKED BY

F.A.S. RTE.	SECTION	COUNTY	TOTAL SHEETS	SHEET NO.
1517	10B	DEWITT	26	12

CONTRACT NO. 70549

DETAIL OF POROUS GRANULAR BACKFILL PAY LIMITS



NOTE:

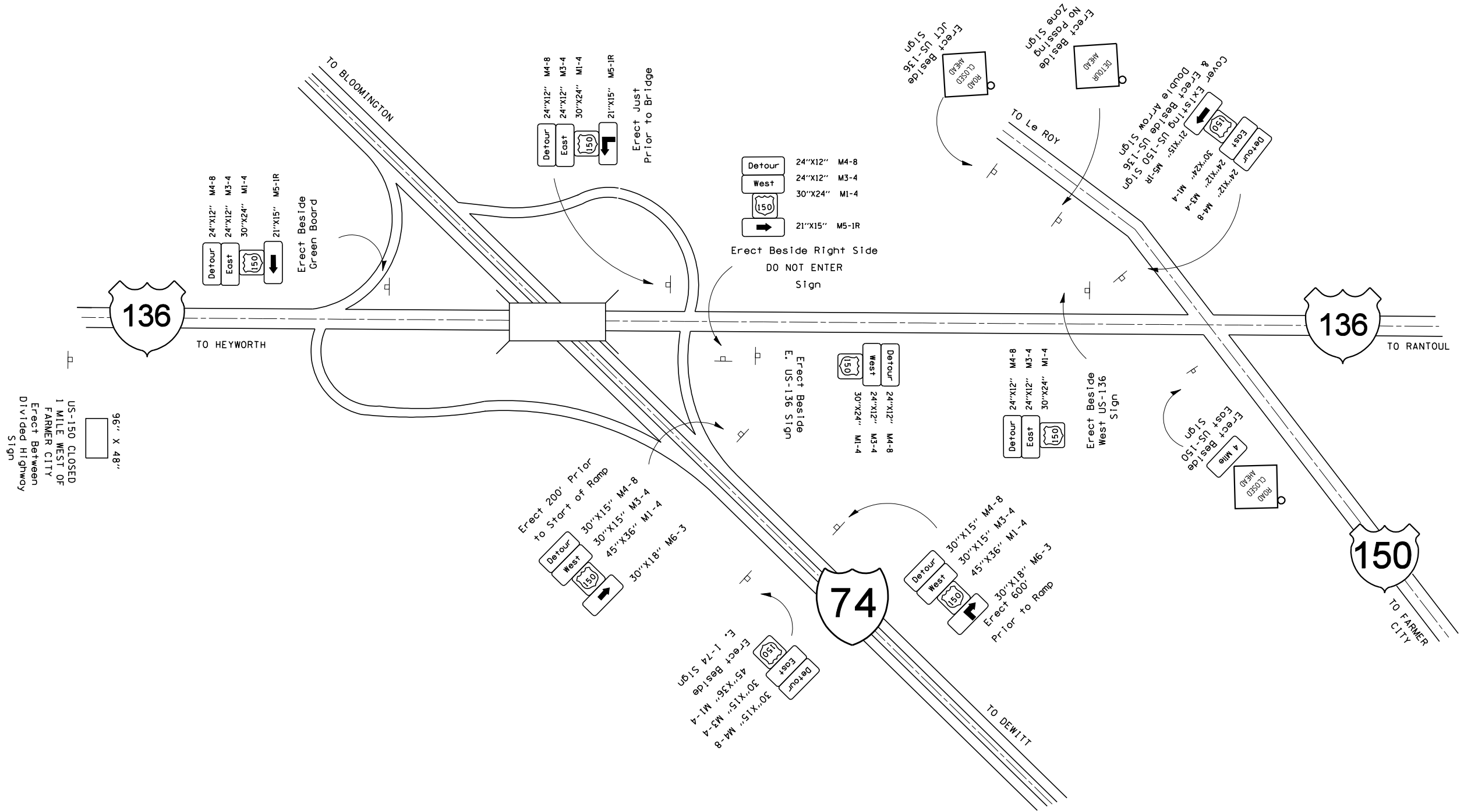
SOIL BORINGS INDICATE THAT THE BOX CULVERT WILL NOT BE ADEQUATELY SUPPORTED BY THE EXISTING SOIL. AN ADDITIONAL 6" BELOW THE TYPICAL 6" THAT IS OUTLINED IN THE "PRECAST CONCRETE BOX CULVERTS" SPECIAL PROVISION. HAS BEEN INCLUDED IN THE PAY ITEM FOR POROUS GRANULAR BACKFILL. *SEE THE SPECIAL PROVISION "PRECAST CONCRETE BOX CULVERTS"*

PAY LIMITS OF POROUS GRANULAR BACKFILL - CA 7
 NOTE: POROUS GRANULAR BACKFILL SHALL EXTEND 18'-0" EACH SIDE OF F.A.P. 1517 CENTERLINE
 PLAN TOTAL = 50.0 CUYDS

POROUS GRANULAR MATERIAL - CA 6 (6")
 (INCLUDED IN PAY ITEM FOR PRECAST CONCRETE BOX CULVERT)

F.A.S. RTE.	SECTION	COUNTY	TOTAL SHEETS	SHEET NO.
1517	10B	DEWITT	26	13
STA.		TO STA.		
FED. ROAD DIST. NO.	ILLINOIS	FED. AID PROJECT		

ROAD CLOSURE DETAIL SIGNING NORTH SIGNING



96' X 48'
US-150 CLOSED
1 MILE WEST OF
FARMER CITY
Erect Between
Divided Highway
Sign

NOTE: SIGN LOCATIONS MAY BE ADJUSTED DUE TO FIELD CONDITIONS.
COVER ALL CONFLICTING SIGNS.
SIGN DIMENSIONS NOT GIVEN SHALL BE 48" X 48"

REVISIONS	
NAME	DATE

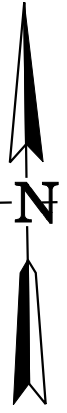
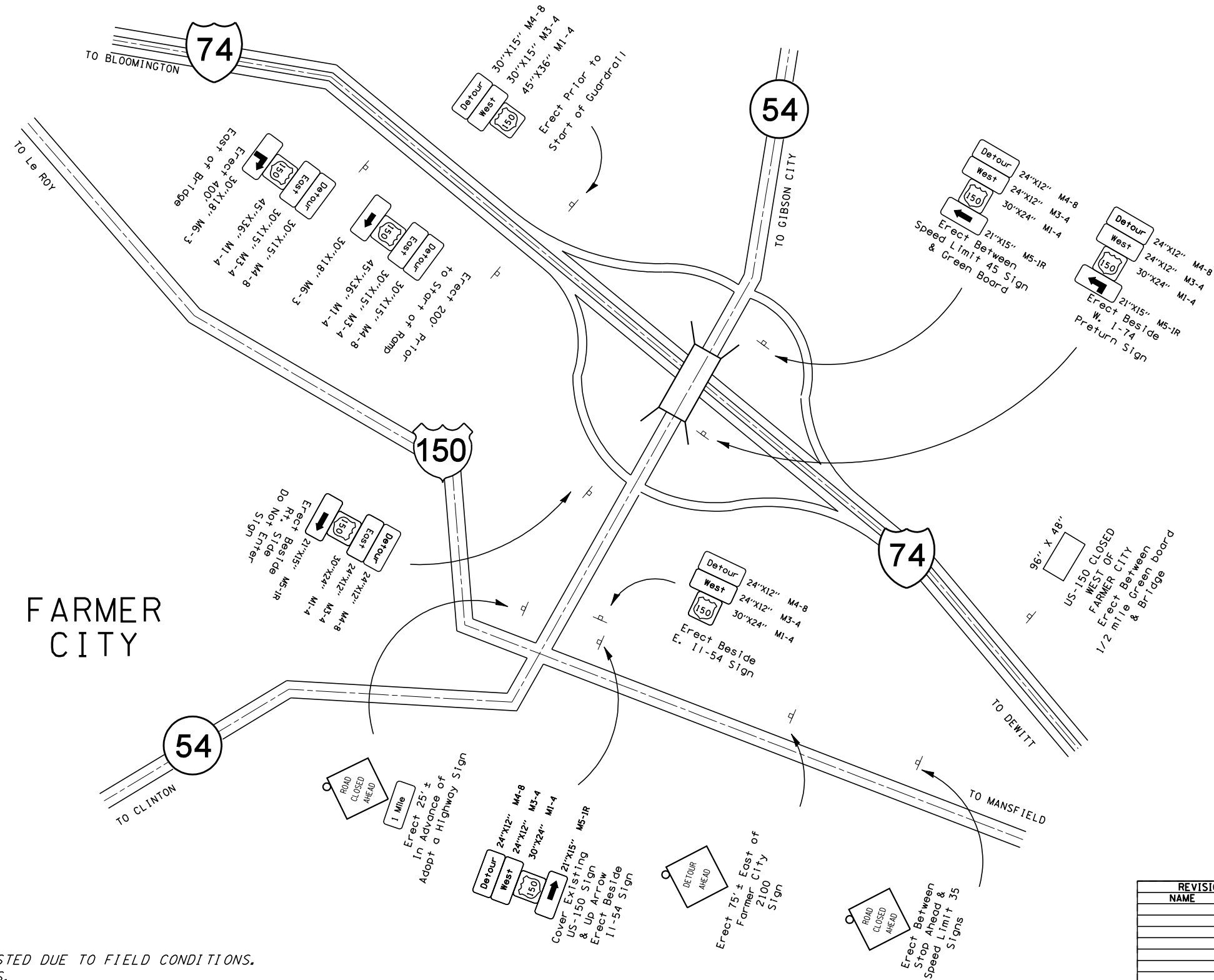
ILLINOIS DEPARTMENT OF TRANSPORTATION
 Designed By: CNP 3/13/06
 Checked By: KAG 3/15/06
 SCALE: VERT. _____
 DATE: _____
 DRAWN BY _____
 CHECKED BY _____

PLOT DATE = 3/30/2006
 FILE NAME = c:\projects\70549\design\70549.dgn
 PLOT SCALE = 42.3529 / IN.
 USER NAME = sheehygm

F.A.S. RTE.	SECTION	COUNTY	TOTAL SHEETS	SHEET NO.
1517	10B	DEWITT	26	14
STA.		TO STA.		
FED. ROAD DIST. NO.	ILLINOIS	FED. AID PROJECT		

ROAD CLOSURE DETAIL SIGNING

SOUTH SIGNING



FARMER CITY

NOTE: SIGN LOCATIONS MAY BE ADJUSTED DUE TO FIELD CONDITIONS.
COVER ALL CONFLICTING SIGNS.
SIGN DIMENSIONS NOT GIVEN SHALL BE 48" X 48"

PLOT DATE = 3/30/2006
 FILE NAME = c:\projects\70549\design\70549.dgn
 PLOT SCALE = 42,352" / IN.
 USER NAME = sheehyjm

REVISIONS	
NAME	DATE

ILLINOIS DEPARTMENT OF TRANSPORTATION

Designed By: CNP 3/13/06

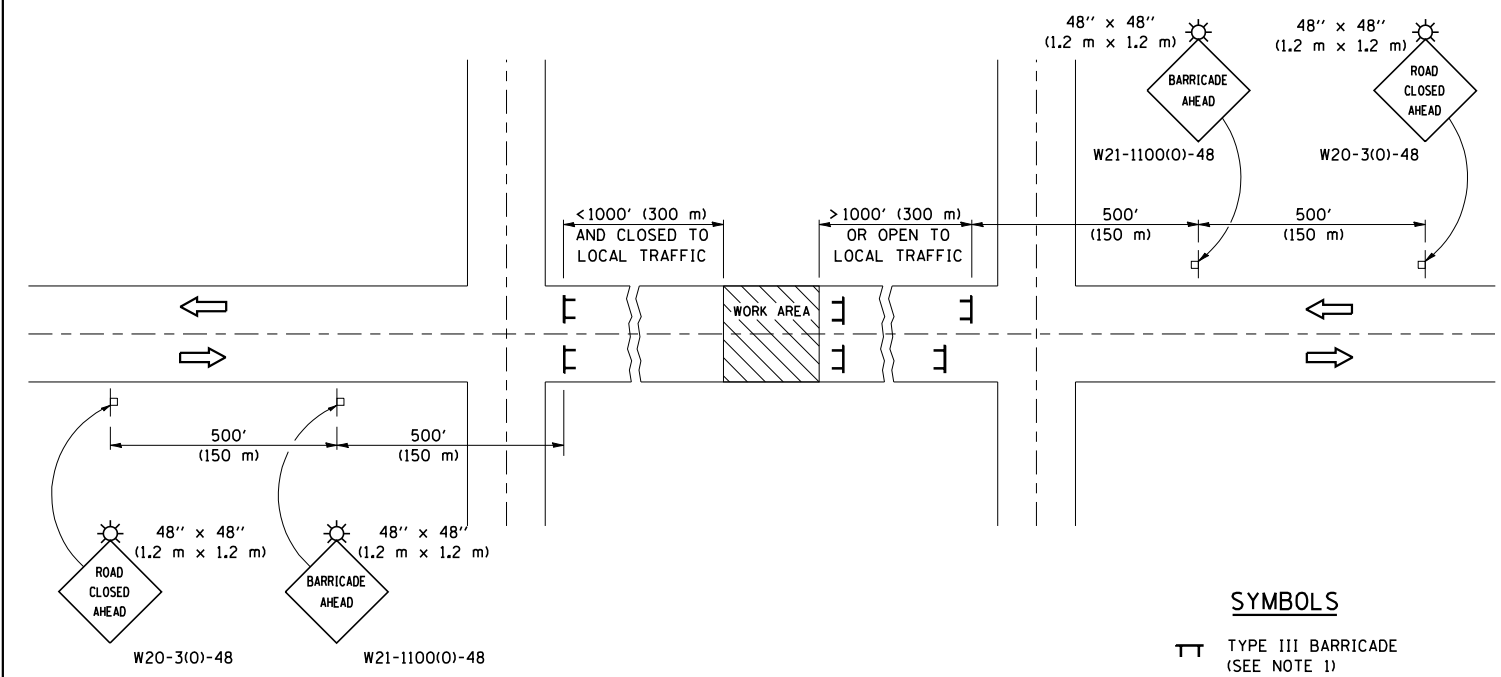
Checked By: KAG 3/15/06

SCALE: VERT. DRAWN BY
 DATE HORIZ. CHECKED BY

F.A.S. RTE.	SECTION	COUNTY	TOTAL SHEETS	SHEET NO.
709	105BR	CHAMPAIGN	26	15

CONTRACT NO. 70549

TYPICAL APPLICATION OF TRAFFIC CONTROL DEVICES FOR ROAD CLOSURE



SYMBOLS

- TT TYPE III BARRICADE (SEE NOTE 1)
- ⚡ FLASHING AMBER LIGHT (TYPE A)

GENERAL NOTES

1. TYPE III BARRICADES SHALL BE AS SHOWN ON STANDARD 702001 "TYPICAL APPLICATIONS OF TYPE III BARRICADES CLOSING A ROAD". EACH TYPE III BARRICADE SHALL HAVE TWO FLASHING AMBER LIGHTS MOUNTED ABOVE IT.
2. IF THE ROAD IS OPEN TO LOCAL TRAFFIC OR EXCEEDS 1000' (300 m), ANOTHER SET OF TYPE III BARRICADES, EQUIPPED AS IN NOTE 1 ABOVE, SHALL BE PLACED AT EACH END OF THE WORK AREA.
3. WHEN A STOP CONDITION EXISTS, NO SIGNS ARE REQUIRED IN ADVANCE OF THE "STOP" SIGN WHEN THE ROAD IS CLOSED WITHIN 100' (30 m) OF THE INTERSECTION.
4. STANDARD 702001 SHALL APPLY FOR THE PLACEMENT & DESIGN OF TYPE III BARRICADES.
5. IF A TYPE III BARRICADE WITH AN ATTACHED SIGN PANEL WHICH MEETS NCHRP 350 IS NOT AVAILABLE, THE SIGNS MAY BE MOUNTED ON AN NCHRP 350 TEMPORARY SIGN SUPPORT DIRECTLY IN FRONT OF THE BARRICADE.
6. REFLECTORIZED STRIPING SHALL APPEAR ON BOTH SIDES OF THE TYPE III BARRICADES IF ROAD IS OPEN TO LOCAL TRAFFIC.
7. ALL SIGNS SHALL BE POST MOUNTED IF THE CLOSURE TIME EXCEEDS FOUR DAYS.
8. A MINIMUM OF TWO FLASHING LIGHTS SHALL BE USED AT NIGHT ON EACH APPROACH IN ADVANCE OF THE WORK AREA. FLASHING LIGHTS SHALL BE INSTALLED ABOVE THE FIRST TWO SIGNS IN THE SERIES.
9. LONGITUDINAL DIMENSIONS MAY BE ADJUSTED SLIGHTLY TO FIT FIELD CONDITIONS.
10. FORMS BT. 725 AND BT. 726 ARE REQUIRED.
11. WHEN A SIDEROAD INTERSECTS THE HIGHWAY ON WHICH WORK IS BEING PERFORMED, ADDITIONAL TRAFFIC DEVICES SHALL BE ERECTED AND PROVIDED AS DIRECTED BY THE ENGINEER.
12. AN ADDITIONAL SIGN MAY BE REQUIRED AT A MAJOR INTERSECTING ROAD IN ADVANCE OF THE CLOSURE. THE ADDITIONAL SIGN SHALL GIVE THE DISTANCE TO THE BARRICADE IN MILES OR FRACTIONS OF A MILE.

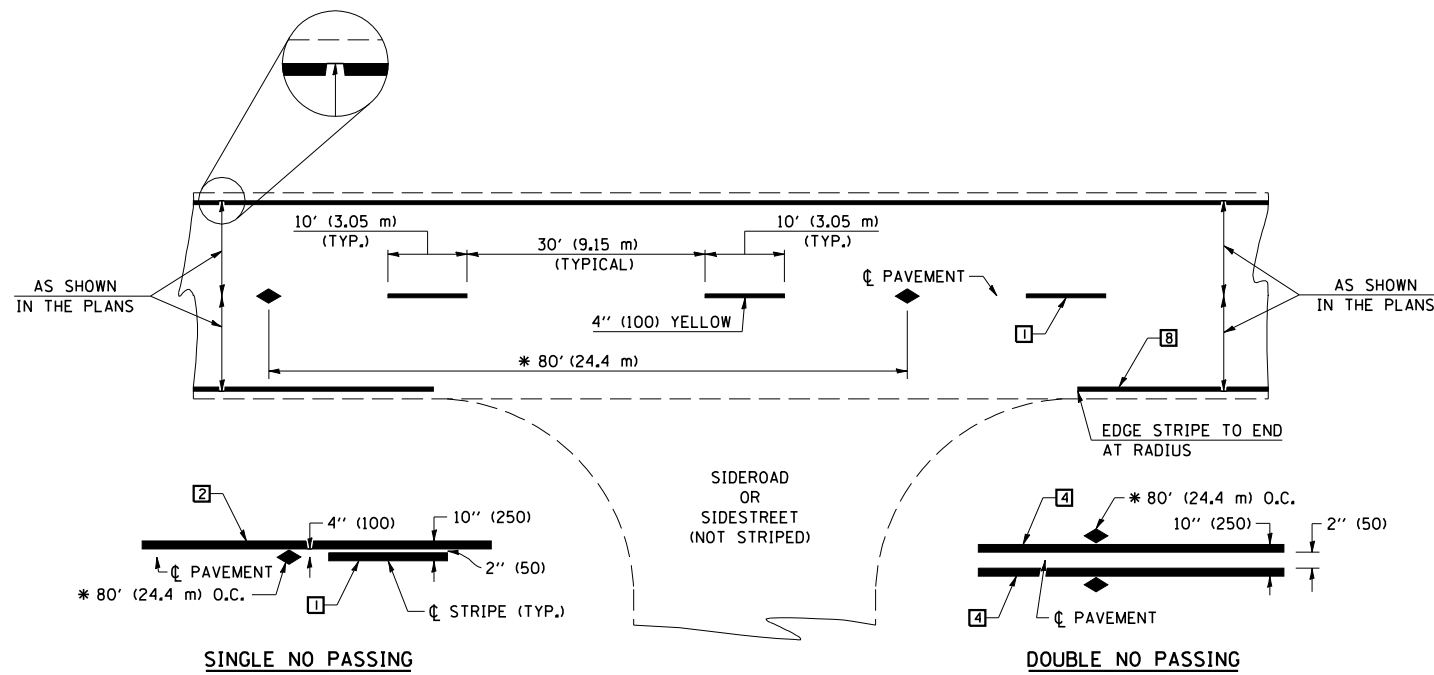
	NAME	DATE	REVISIONS	
DESIGNED	J.H.M.	8-11-87	NAME	DATE
CHECKED	P.E.K.	8-25-87	R.M.H.	12/97
CADD NO.	F-5.03		C.P./K.A.G.	01/05

ALL DIMENSIONS ARE IN INCHES (MILLIMETERS) UNLESS OTHERWISE SHOWN.

F.A.S. RTE.	SECTION	COUNTY	TOTAL SHEETS	SHEET NO.
1517	10B	DEWITT	26	16

CONTRACT NO. 70549

TYPICAL APPLICATIONS OF PAVEMENT MARKINGS AND MARKERS



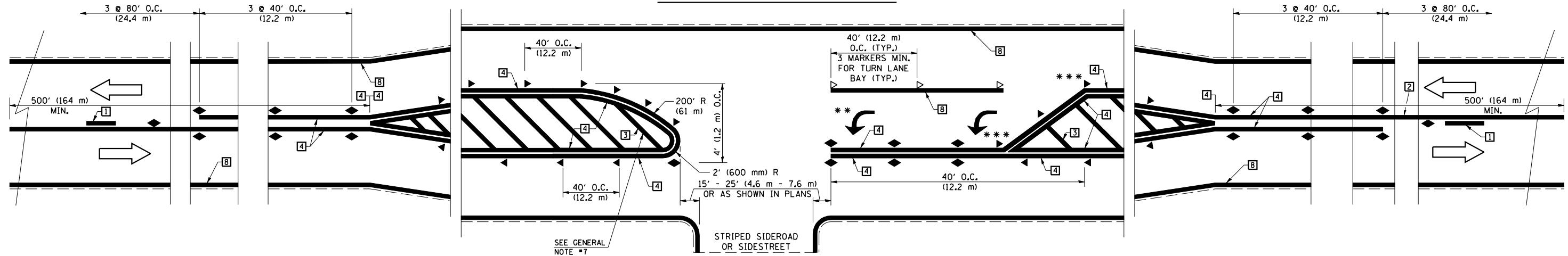
TYPICAL PAVEMENT MARKING LEGEND

- 1 4" (100) SKIP-DASH (YELLOW)
- 2 4" (100) SOLID (YELLOW)
- 3 12" (300) DIAGONAL (YELLOW)
- 4 4" (100) DOUBLE YELLOW (NARROW)
- 5 RESERVED
- 6 RESERVED
- 7 4" (100) SKIP-DASH (WHITE)
- 8 4" (100) SOLID (WHITE)
- 9 12" (300) DIAGONAL (WHITE)
- 10 6" (150) CROSS WALK (WHITE)
- 11 24" (600) STOP BAR (WHITE)
- 12 8" (200) SOLID (WHITE)
- 13 4" (100) LANE LINE EXTENSIONS (WHITE)
- 14 4" (100) PARKING WHITE

TYPICAL PAVEMENT MARKERS LEGEND

- ◆ TWO-WAY AMBER MARKER
- ▶ ONE-WAY AMBER MARKER
- ▷ ONE-WAY CRYSTAL MARKER

DETAIL OF RURAL LEFT TURN LANE



SHEET 1 OF 4

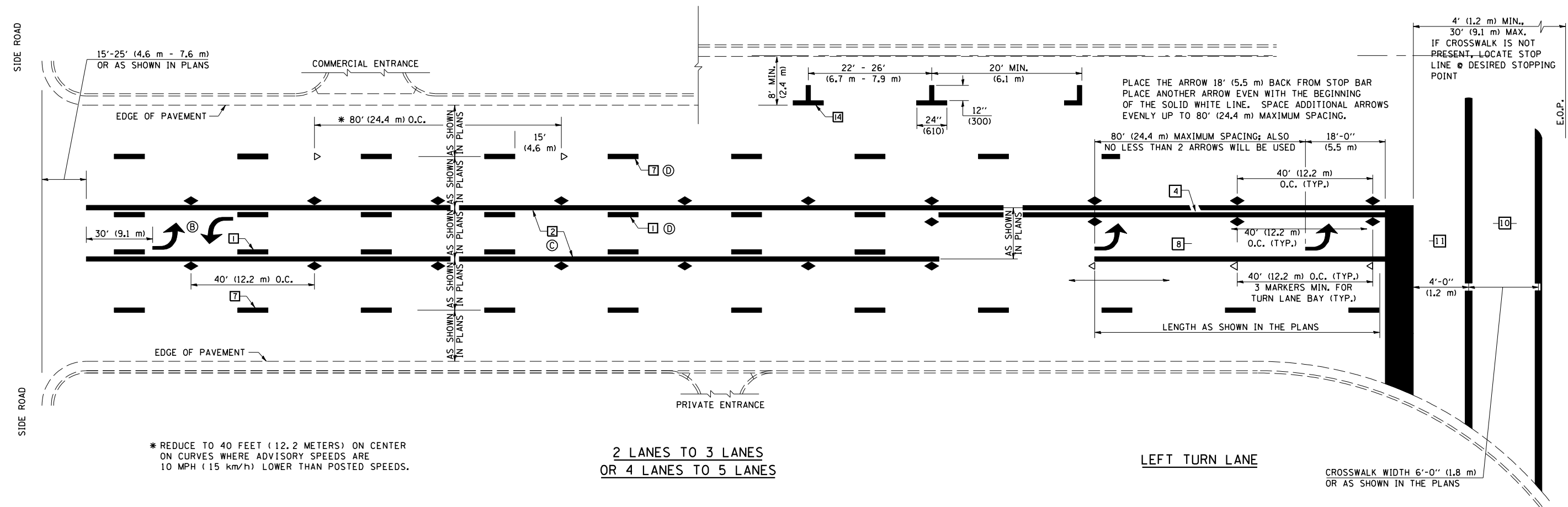
DESIGNED	NAME	DATE	REVISIONS
J.M.H.	5/85	6/88	NAME
FMS	6/85	6/88	DATE
CDD	6/88		GEOMETRICS/K.A.G.
CADD NO.	F-5,25		K.A.G.

ALL DIMENSIONS ARE IN INCHES (MILLIMETERS) UNLESS OTHERWISE SHOWN.

F.A.S. RTE.	SECTION	COUNTY	TOTAL SHEETS	SHEET NO.
1517	10B	DEWITT	26	17

CONTRACT NO. 70549

TYPICAL APPLICATIONS OF PAVEMENT MARKINGS AND MARKERS



* REDUCE TO 40 FEET (12.2 METERS) ON CENTER ON CURVES WHERE ADVISORY SPEEDS ARE 10 MPH (15 km/h) LOWER THAN POSTED SPEEDS.

2 LANES TO 3 LANES
OR 4 LANES TO 5 LANES

LEFT TURN LANE

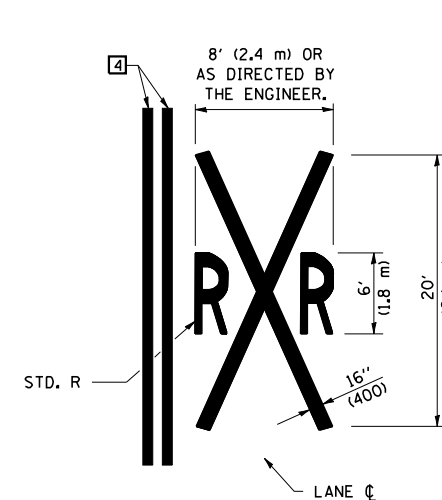
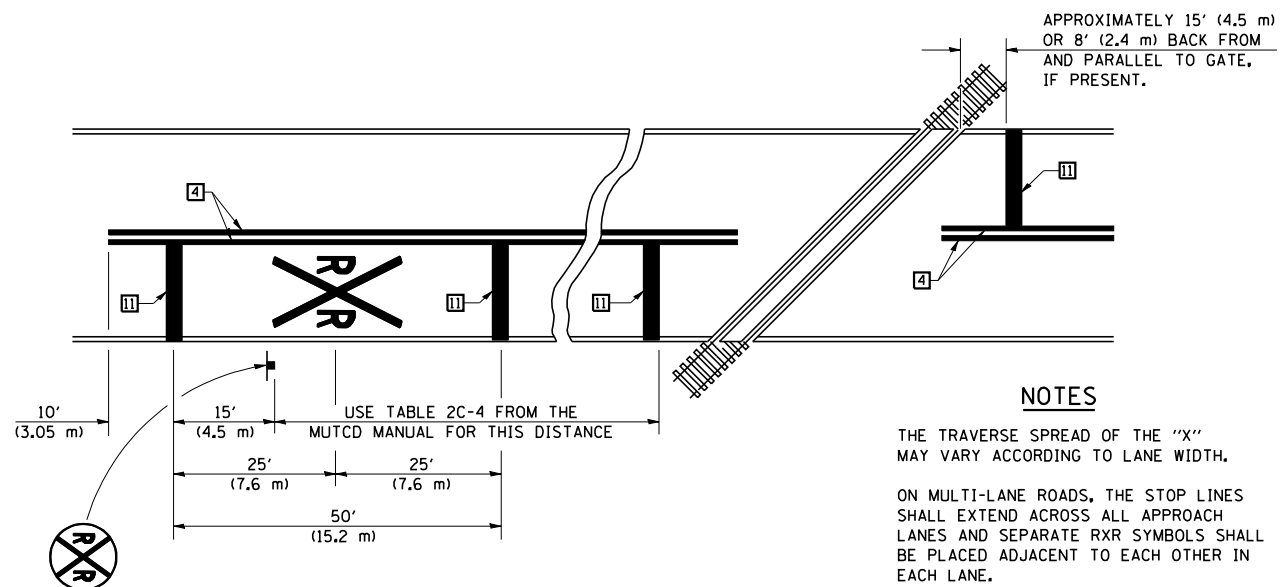
CROSSWALK WIDTH 6'-0" (1.8 m)
OR AS SHOWN IN THE PLANS

SHEET 2 OF 4

	NAME	DATE	REVISIONS
DESIGNED	J.M.H.	5/85	NAME
CHECKED	FMS	6/88	DATE
	CTD	6/85	GEOMETRICS/K.A.G.
CADD NO.	F-5.25	6/88	K.A.G.
			09/05

ALL DIMENSIONS ARE IN INCHES (MILLIMETERS) UNLESS OTHERWISE SHOWN.

TYPICAL APPLICATIONS OF PAVEMENT MARKINGS AND MARKERS



NOTES

THE TRAVERSE SPREAD OF THE "X" MAY VARY ACCORDING TO LANE WIDTH.

ON MULTI-LANE ROADS, THE STOP LINES SHALL EXTEND ACROSS ALL APPROACH LANES AND SEPARATE R XR SYMBOLS SHALL BE PLACED ADJACENT TO EACH OTHER IN EACH LANE.

WHEN THE PAVEMENT MARKING SYMBOL IS USED, A PORTION OF THE SYMBOL SHOULD BE LOCATED DIRECTLY ADJACENT TO THE ADVANCE WARNING SIGN (W10-1) AS PLACED BY TABLE II-1, CONDITION B OF THE MUTCD.

PAVEMENT MARKINGS AT RAILROAD-HIGHWAY GRADE CROSSING

SHEET 4 OF 4

	NAME	DATE	REVISIONS
DESIGNED	J.M.H.	5/85	NAME
CHECKED	FMS	6/88	DATE
	CTD	6/85	GEOMETRICS/K.A.G.
CADD NO.	F-5.25	6/88	K.A.G.
			09/05

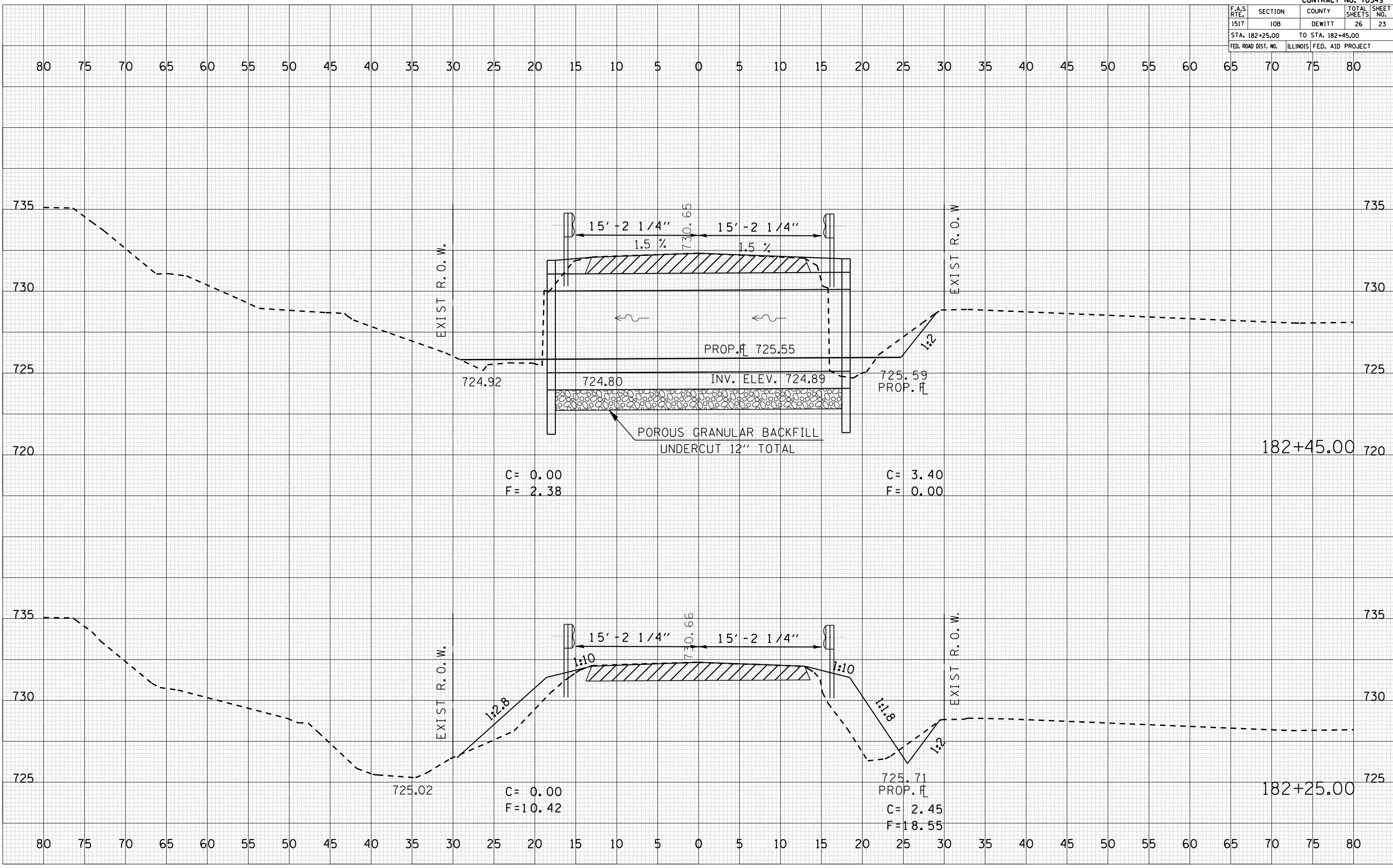
ALL DIMENSIONS ARE IN INCHES (MILLIMETERS) UNLESS OTHERWISE SHOWN.

F.A.S. RTE.	SECTION	COUNTY	TOTAL SHEETS	SHEET NO.
1517	108	DEWITT	26	23
STA. 182+25.00		TO STA. 182+45.00		
FED. ROAD DIST. NO.	ILLINOIS	FED. AID PROJECT		

BY _____ DATE _____
 SURVEYED _____
 PLOTTED _____
 NOTE BOOK _____
 AREAS CHECKED _____
 NO. _____

BY _____ DATE _____
 SURVEYED _____
 PLOTTED _____
 NOTE BOOK _____
 AREAS CHECKED _____
 NO. _____

PLOT DATE = 3/30/2006
 FILE NAME = 1015060606
 PLOT SCALE = 1/8" = 1'-0"
 USER NAME = sheehygm



C = 0.00
 F = 2.38

C = 3.40
 F = 0.00

C = 0.00
 F = 10.42

725.71
 PROP. FL
 C = 2.45
 F = 18.55

182+45.00

182+25.00

