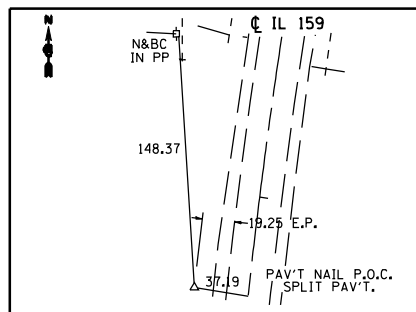
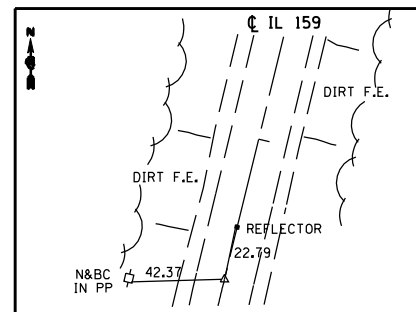


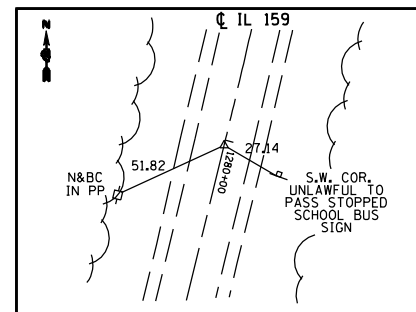
F.A.P. RTE.	SECTION	COUNTY	TOTAL SHEETS	SHEET NO.
*	**	MACOUPIN	231	24
STA.		TO STA.		
FED. ROAD DIST. NO.		ILLINOIS FED. AID PROJECT		
* FAP 325 & FAP 604 ** 14R; 115RS-2; 116RS-4; 101RS-2				



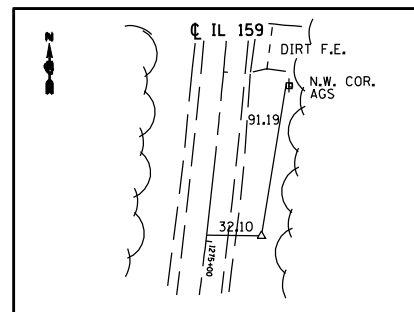
PI #118 STA. 1288+58.65
(*4 REBAR W/CAP)
BURIED 6"



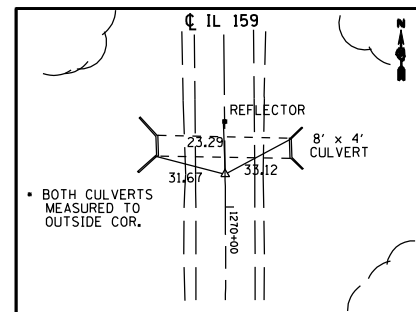
PC #118 STA. 1283+63.70
(PK N&BC IN CHSLD. "X")



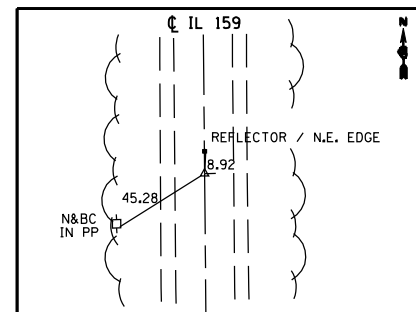
PT #117 STA. 1280+02.26 =
POT #117 STA. 1280+11.77
(PK N&BC IN CHSLD. "X")



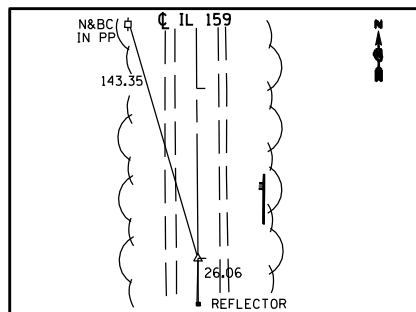
PI #117 STA. 1274+96.54
(*4 REBAR W/CAP)
BURIED 4"



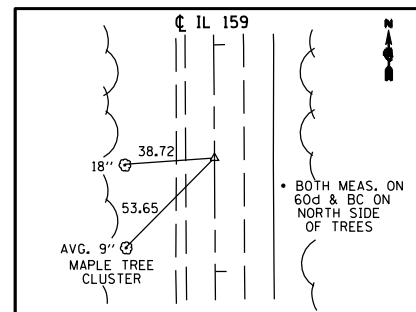
PC #117 STA. 1269+85.56
(PK N&BC IN CHSLD. "X")



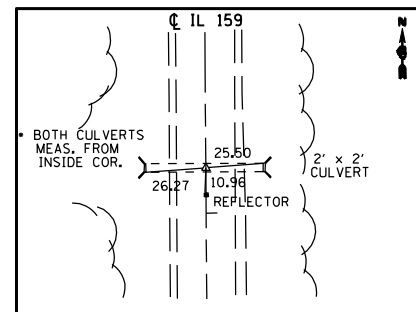
POT #123 STA. 1252+00.00
(PK N&BC IN CHSLD. "X")



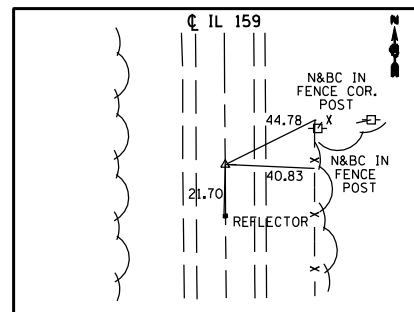
POT #115 STA. 1234+00.00
(PK N&BC IN CHSLD. "X")



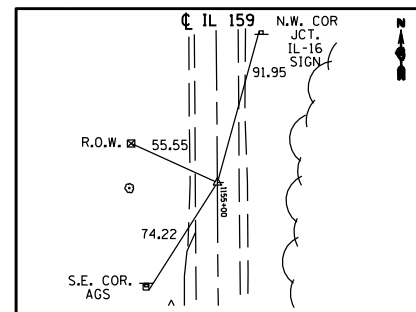
POT #122 STA. 1212+50.00
(PK N&BC IN CHSLD. "X")



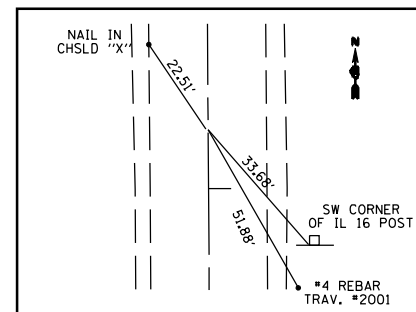
POT #114 STA. 1190+80.00
(PK N&BC IN CHSLD. "X")



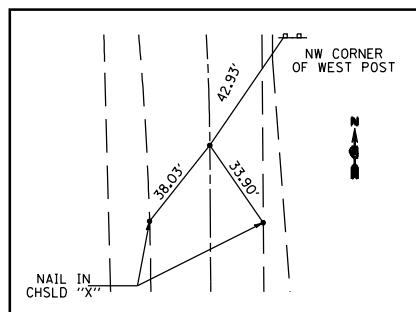
PC #121 STA. 1173+00.00
(PK N&BC IN CHSLD. "X")



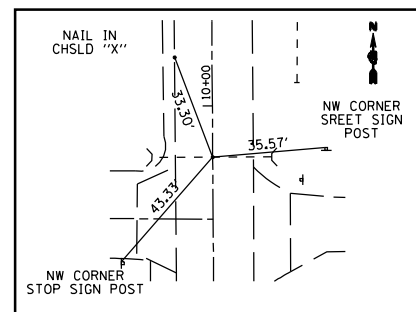
POT #526 STA. 1154+95.82 =
POT #200 STA. 1154+99.92
(PK N&BC IN CHSLD. "X")



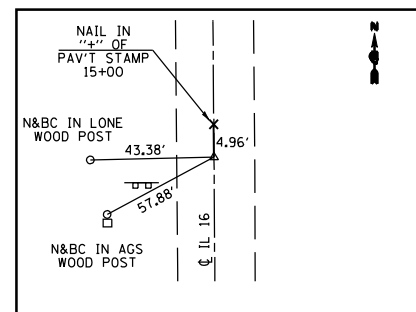
P.O.T. STA. 1153+87.00
PK NAIL & B.C.
WITH CHSLD "X"



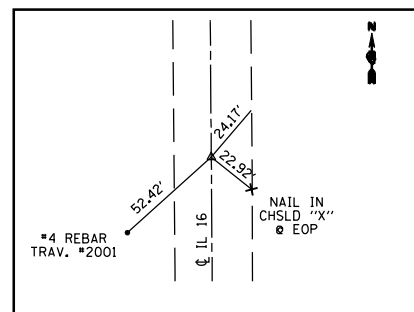
P.O.T. STA. 105+05.78
PK NAIL & B.C.
WITH CHSLD "X"



P.O.T. STA. 109+89.13
PK NAIL & B.C.
WITH CHSLD "X"



P.O.T. STA. 115+02.28
PK NAIL & B.C.
WITH CHSLD "X"



P.O.T. STA. 120+54.40
PK NAIL & B.C.
WITH CHSLD "X"

REVISIONS	
NAME	DATE

ILLINOIS DEPARTMENT OF TRANSPORTATION
CROSS TIES & BENCHMARKS
FAP 325 (IL 16) & FAP 604 (IL 159)
SECTION 14R; 115RS-2; 116RS-4; 101RS-2
MACOUPIN COUNTY

SCALE: VERT. DRAWN BY
 HORIZ. CHECKED BY
DATE