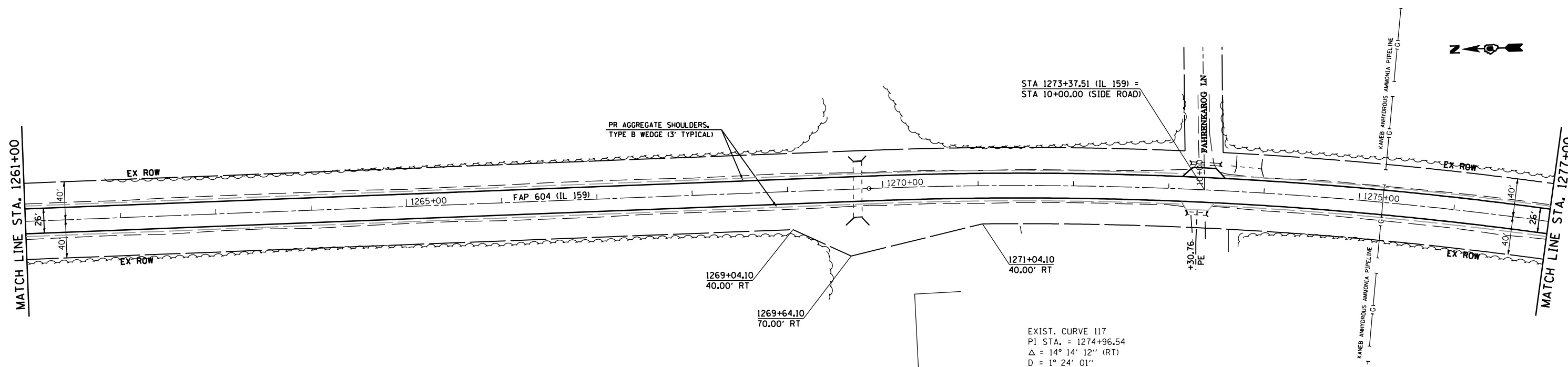
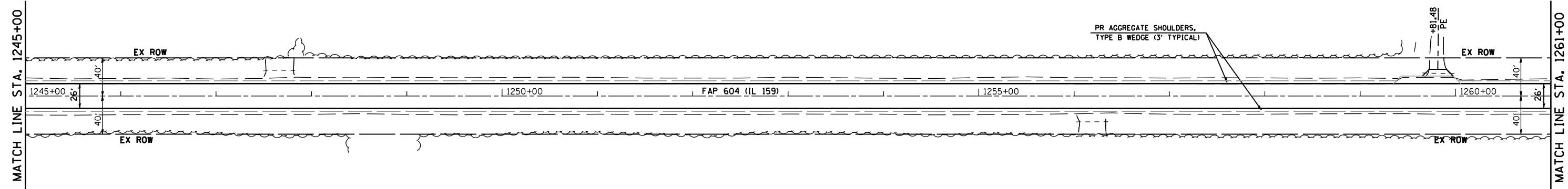
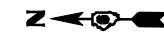


F.A.P. RTE.	SECTION	COUNTY	TOTAL SHEETS	SHEET NO.
*	**	MACOUPIN	231	49
STA.		TO STA.		
FED. ROAD DIST. NO.	ILLINOIS	FED. AID PROJECT		
* FAP 325 & FAP 604				
** 14R; 115RS-2; 116RS-4; 101RS-2				

NOTE: FOR ENTRANCES, MAILBOX TURNOUTS, AND SIDE ROADS ON PART B, SEE DISTRICT SIX ENTRANCE DETAIL FOR 'PPP' PROJECTS



EXIST. CURVE 117
 PI STA. = 1274+96.54
 $\Delta = 14^\circ 14' 12''$ (RT)
 $D = 1^\circ 24' 01''$
 $R = 4,091.76'$
 $T = 510.98'$
 $L = 1,016.70'$
 $E = 31.78'$
 P.C. STA. = 1269+85.56
 P.T. STA. = 1280+02.26

REVISIONS	
NAME	DATE

ILLINOIS DEPARTMENT OF TRANSPORTATION
PLAN VIEW
 FAP 325 (IL 16) & FAP 604 (IL 159)
 SECTION 14R; 115RS-2; 116RS-4; 101RS-2
 MACOUPIN COUNTY
 SCALE: 1" = 50'
 DATE **DATE**
 DRAWN BY
 CHECKED BY

PLOT DATE = **DATE**
 PLOT SCALE = **SCALE**