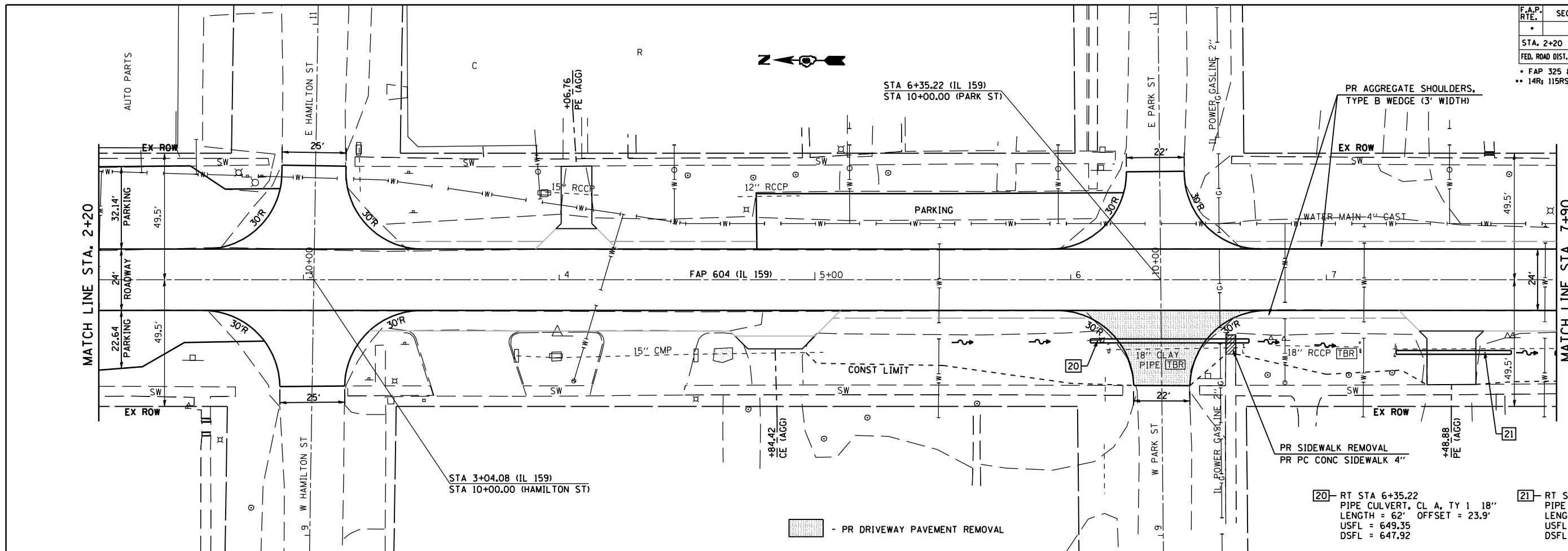


F.A.P. RTE.	SECTION	COUNTY	TOTAL SHEETS	SHEET NO.
.	..	MACOUPIN	231	59
STA. 2+20		TO STA. 7+90		
FED. ROAD DIST. NO.		ILLINOIS FED. AID PROJECT		
• FAP 325 & FAP 604 •• 14R 115R5-2; 116R5-4; 101R5-2				

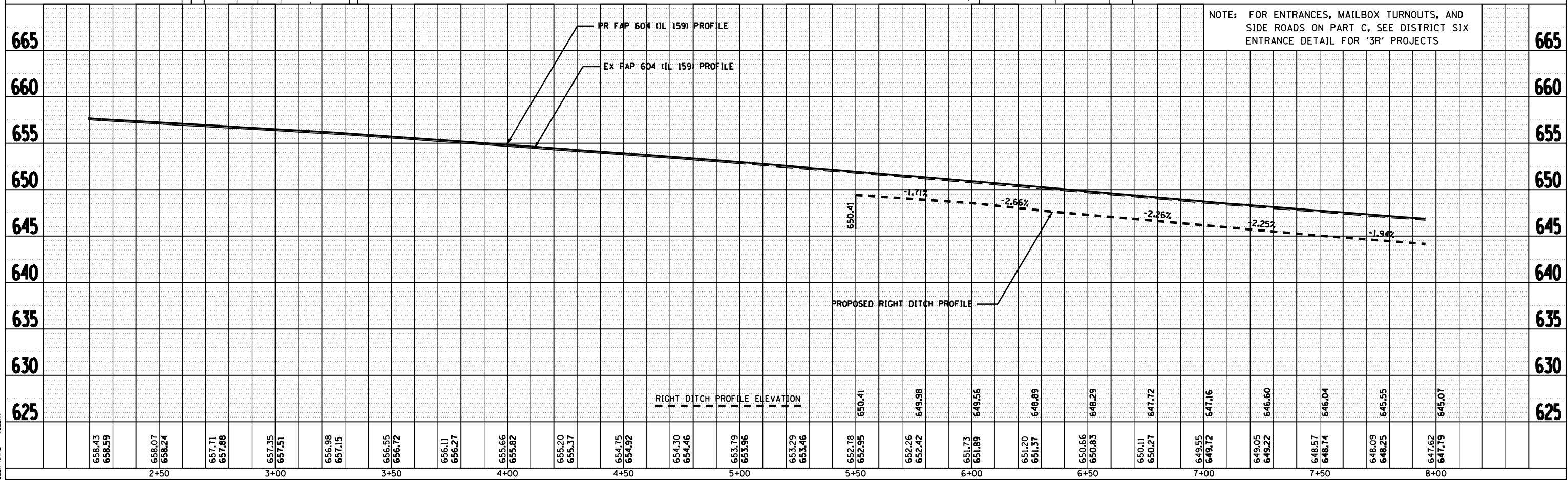
PLAN	SURVEYED	BY	DATE
NO. _____	PICTURED		
	NOTED		
	NOTED		
	NOTED		

PROFILE	SURVEYED	BY	DATE
NO. _____	PICTURED		
	NOTED		
	NOTED		
	NOTED		

PLOT DATE = #DATES  
 FILE NAME = #FILES  
 PLOT SCALE = #SCALE#  
 USER NAME = #USER#



- [20] - RT STA 6+35.22  
 PIPE CULVERT, CL A, TY 1 18"  
 LENGTH = 62' OFFSET = 23.9'  
 USFL = 649.35  
 DSFL = 647.92
- [21] - RT STA 7+48.88  
 PIPE CULVERT, CL D, TY 1 18"  
 LENGTH = 45' OFFSET = 28.4'  
 USFL = 646.55  
 DSFL = 645.59



NOTE: FOR ENTRANCES, MAILBOX TURNOUTS, AND SIDE ROADS ON PART C, SEE DISTRICT SIX ENTRANCE DETAIL FOR '3R' PROJECTS