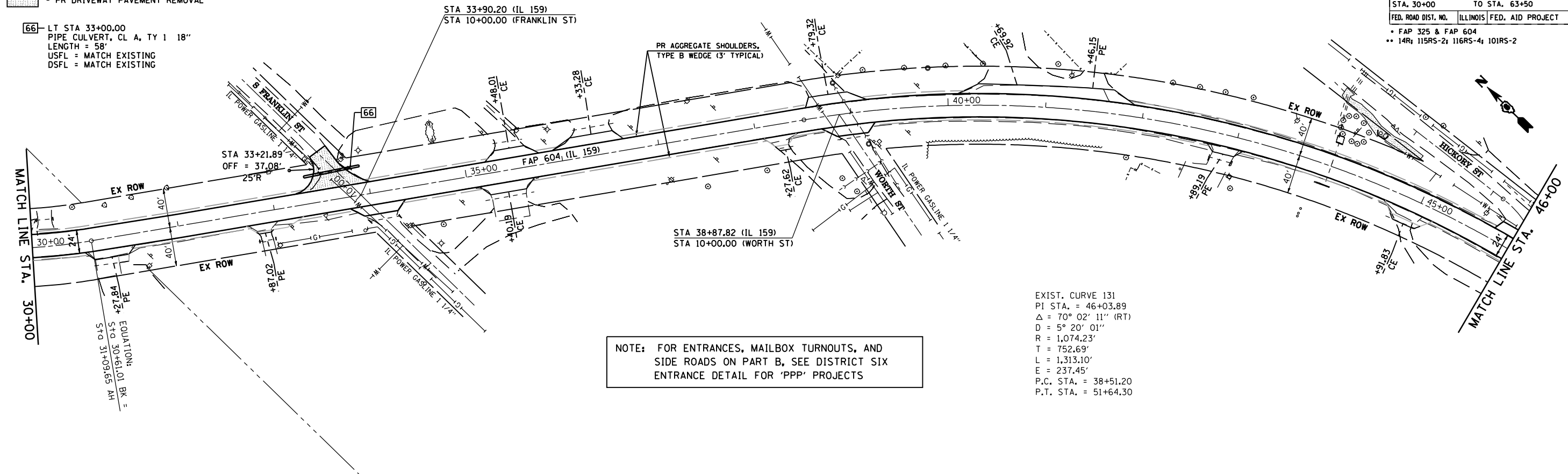


F.A.P. RTE.	SECTION	COUNTY	TOTAL SHEETS	SHEET NO.
*	**	MACOUPIN	231	64
STA. 30+00		TO STA. 63+50		
FED. ROAD DIST. NO.		ILLINOIS FED. AID PROJECT		
* FAP 325 & FAP 604				
** 14R 115RS-2; 116RS-4; 101RS-2				

PR DRIVEWAY PAVEMENT REMOVAL

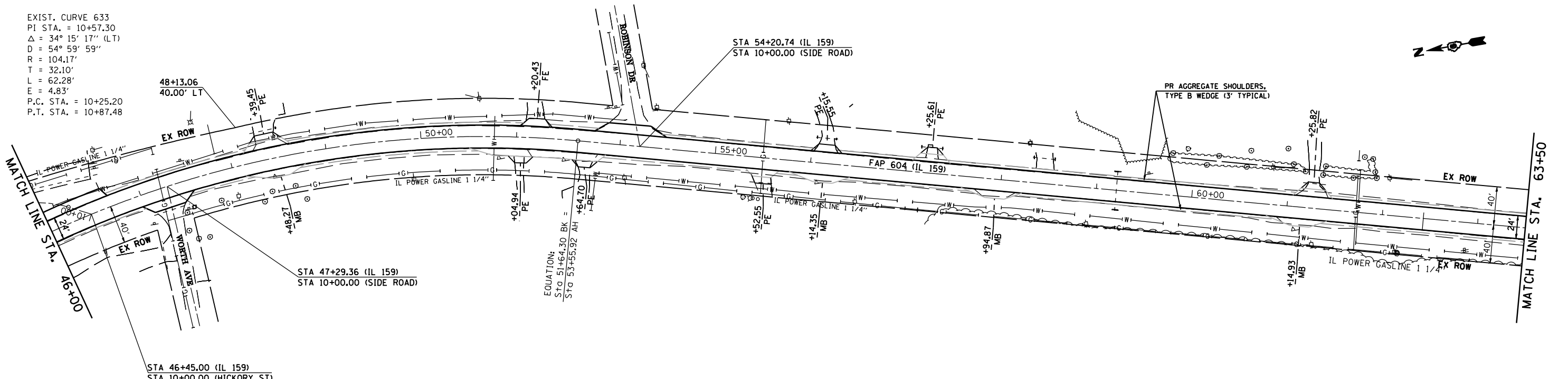
66 LT STA 33+00.00  
PIPE CULVERT, CL A, TY 1 18"  
LENGTH = 58'  
USFL = MATCH EXISTING  
DSFL = MATCH EXISTING



NOTE: FOR ENTRANCES, MAILBOX TURNOUTS, AND SIDE ROADS ON PART B, SEE DISTRICT SIX ENTRANCE DETAIL FOR 'PPP' PROJECTS

EXIST. CURVE 131  
PI STA. = 46+03.89  
 $\Delta = 70^\circ 02' 11''$  (RT)  
D = 5° 20' 01"  
R = 1,074.23'  
T = 752.69'  
L = 1,313.10'  
E = 237.45'  
P.C. STA. = 38+51.20  
P.T. STA. = 51+64.30

EXIST. CURVE 633  
PI STA. = 10+57.30  
 $\Delta = 34^\circ 15' 17''$  (LT)  
D = 54° 59' 59"  
R = 104.17'  
T = 32.10'  
L = 62.28'  
E = 4.83'  
P.C. STA. = 10+25.20  
P.T. STA. = 10+87.48



REVISIONS	
NAME	DATE

ILLINOIS DEPARTMENT OF TRANSPORTATION  
**PLAN VIEW**  
FAP 325 (IL 16) & FAP 604 (IL 159)  
SECTION 14R; 115RS-2; 116RS-4; 101RS-2  
MACOUPIN COUNTY  
SCALE: 1" = 50'  
DATE: \*\*DATE\*\*  
DRAWN BY: \_\_\_\_\_  
CHECKED BY: \_\_\_\_\_

PLOT DATE: \*\*DATE\*\*  
SCALE: \*\*SCALE\*\*  
PLOT SCALE: \*\*SCALE\*\*