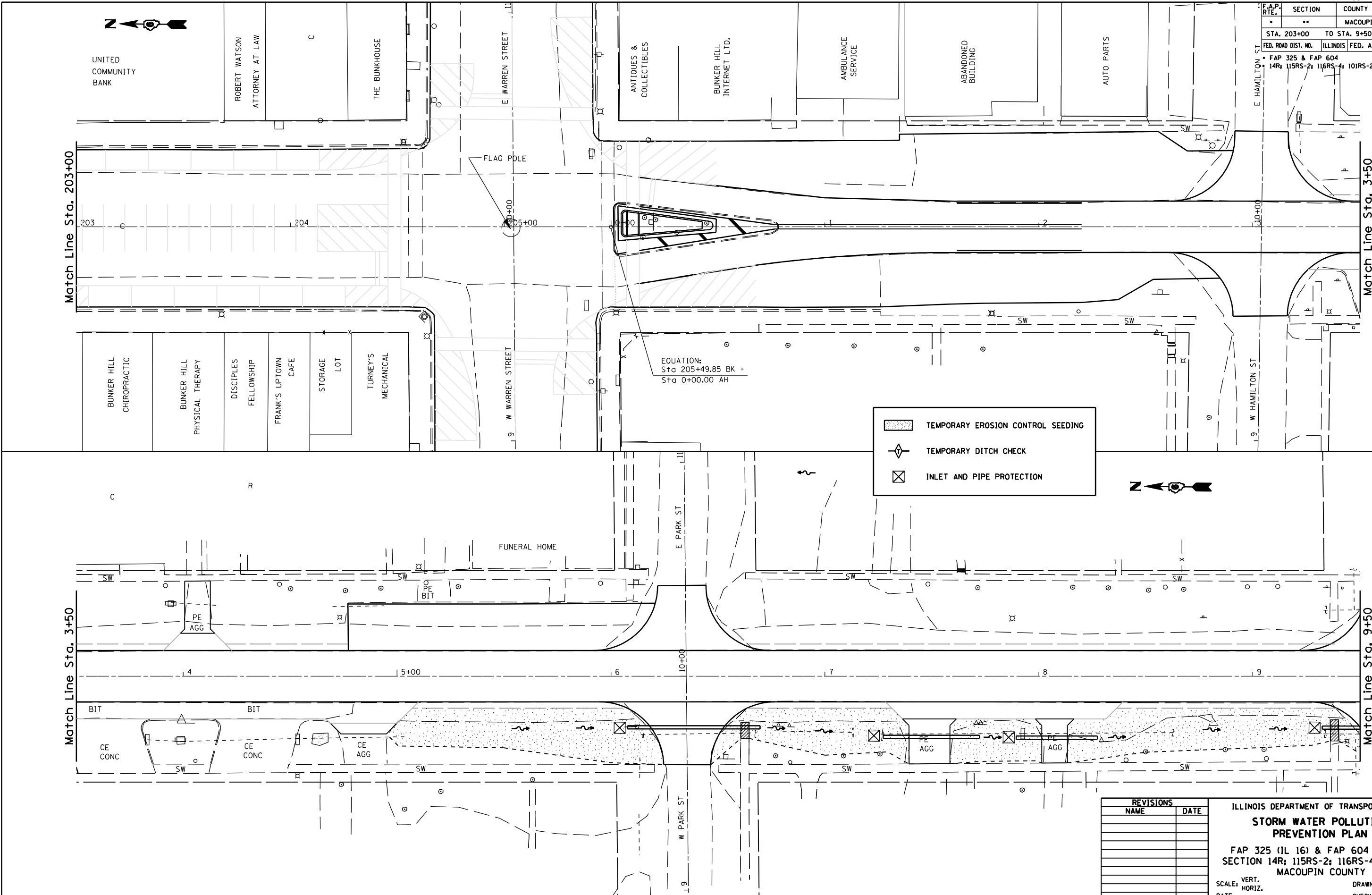

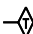



F.A.P. RTE.	SECTION	COUNTY	TOTAL SHEETS	SHEET NO.
*	**	MACOUPIN	231	86
STA. 203+00		TO STA. 9+50		
FED. ROAD DIST. NO. ILLINOIS FED. AID PROJECT				
* FAP 325 & FAP 604				
14R; 115RS-2; 116RS-4; 101RS-2;				



EQUATION:
Sta 205+49.85 BK =
Sta 0+00.00 AH

-  TEMPORARY EROSION CONTROL SEEDING
-  TEMPORARY DITCH CHECK
-  INLET AND PIPE PROTECTION

REVISIONS	
NAME	DATE

ILLINOIS DEPARTMENT OF TRANSPORTATION
STORM WATER POLLUTION PREVENTION PLAN
 FAP 325 (IL 16) & FAP 604 (IL 159)
 SECTION 14R; 115RS-2; 116RS-4; 101RS-2
 MACOUPIN COUNTY
 SCALE: VERT. _____
 HORIZ. _____
 DATE _____ DRAWN BY _____
 CHECKED BY _____

PLOT DATE : # DATES
 FILE NAME : # FILE#
 PLOT SCALE : # SCALE#
 REFERENCE : # REF#