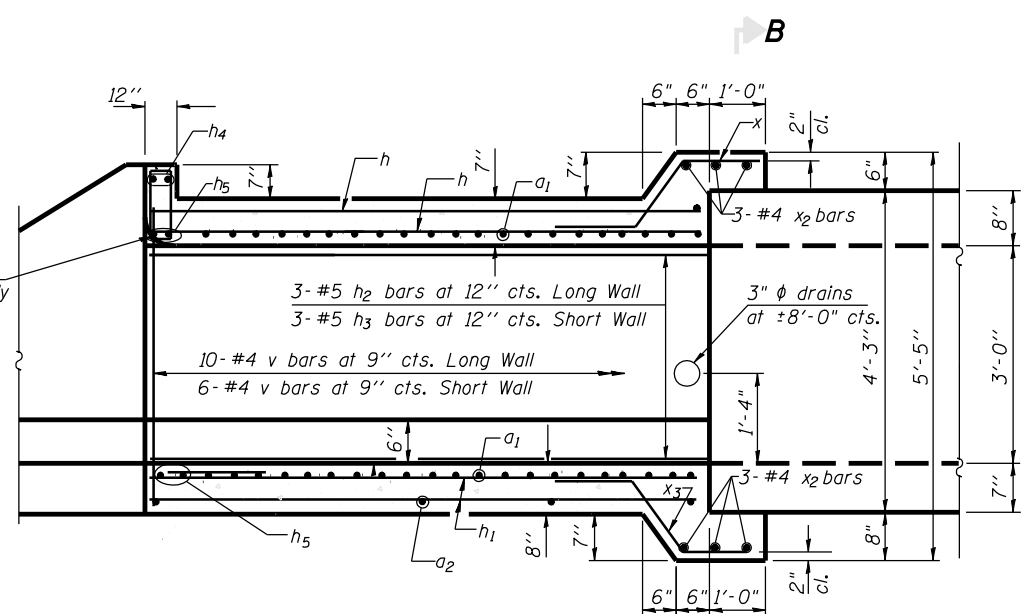


ROUTE NO.	SECTION	COUNTY	TOTAL SHEETS	SHEET NO.
FAP 604	*	MACOUPIN	231	112
FED. ROAD DIST. NO. 7		ILLINOIS	FED. AID PROJECT	

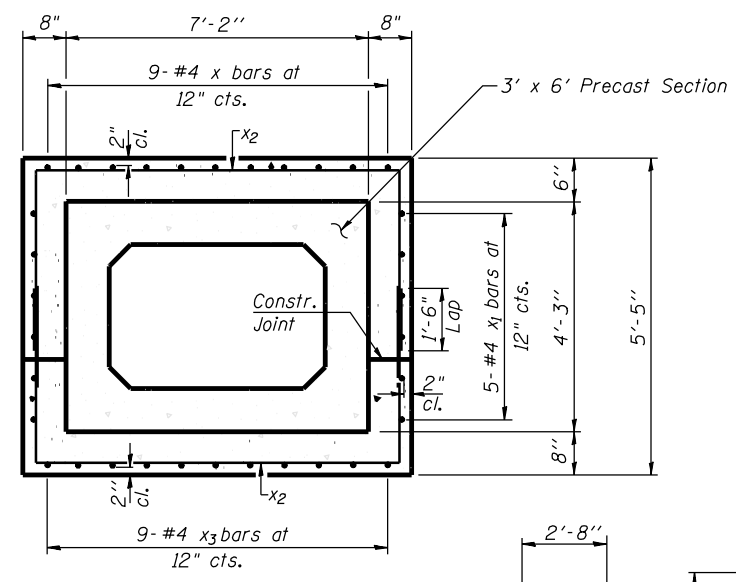
SHEET NO. 3
4 SHEETS

*14R: 115RS-2; 116RS-4; 101RS-2
7'-0"

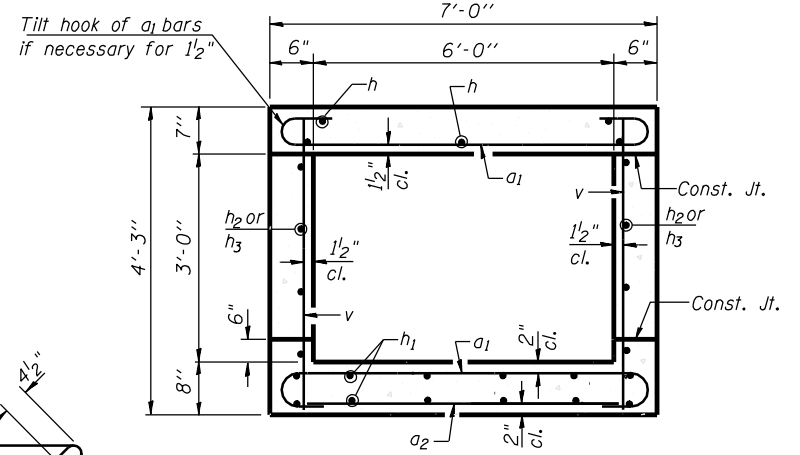


LONG SECTION **B ELEVATION**

Dimensions at Rt. L's to $\text{\textcircled{C}}$ Roadway



SECTION B-B

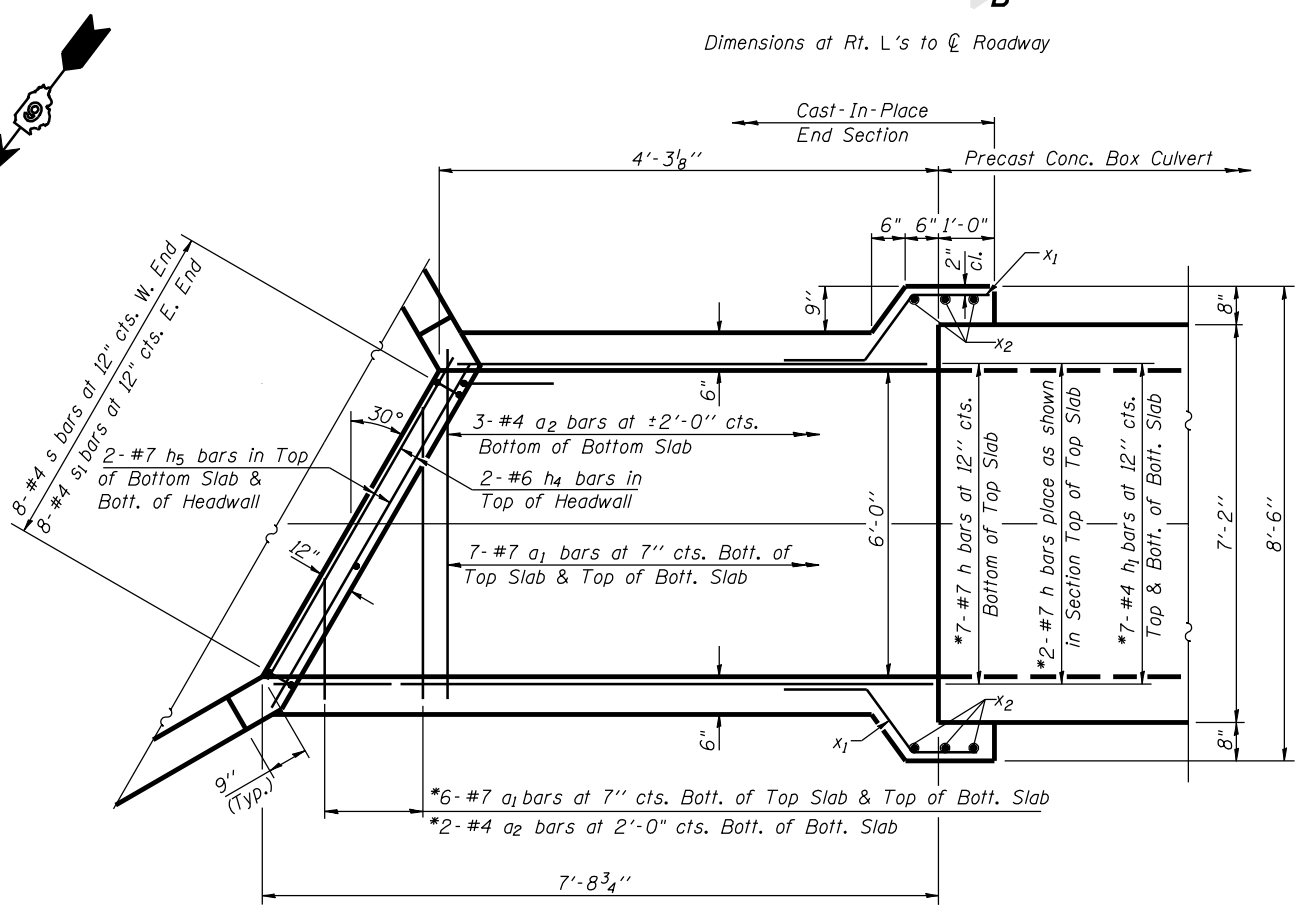


SECTION THRU CAST-IN-PLACE BARREL

BILL OF MATERIAL

Bar	No.	Size	Length	Shape
a	8	#4	17'-0"	
a1	40	#7	8'-4"	
a2	10	#4	6'-3"	
b	14	#4	19'-2"	
b1	20	#4	13'-6"	
b2	12	#4	7'-7"	
b3	14	#4	16'-10"	
d	45	#4	5'-4"	
h	9	#7	11'-3"	
h1	14	#4	11'-3"	
h2	6	#5	7'-4"	
h3	6	#5	3'-11"	
h4	4	#6	6'-8"	
h5	8	#7	7'-8"	
h6	8	#4	18'-0"	
h7	4	#4	29'-4"	
h8	4	#4	20'-0"	
s	8	#4	4'-1"	
s1	8	#4	4'-1"	
v	32	#4	3'-11"	
v1	15	#4	8'-10"	
v2	20	#4	6'-3"	
v3	14	#4	5'-1"	
v4	9	#4	3'-9"	
w	1	#4	17'-0"	
w1	2	#4	15'-0"	
w2	1	#4	25'-0"	
x	18	#4	3'-7"	
x1	20	#4	3'-7"	
x2	12	#4	14'-10"	
x3	18	#4	3'-8 1/2"	
Concrete Box Culverts			Cu. Yd.	31.6
Reinforcement Bars			Pound	3000

See Sheet 4 of 4 for wingwall and apron details.



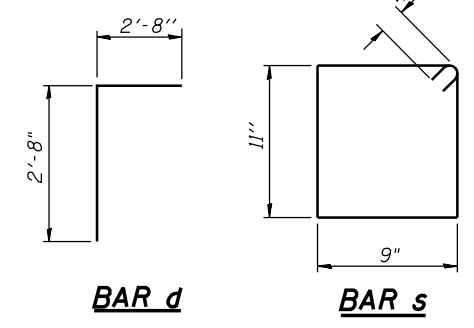
PLAN

(East end shown, West end similar by rotating 180°)

NOTES

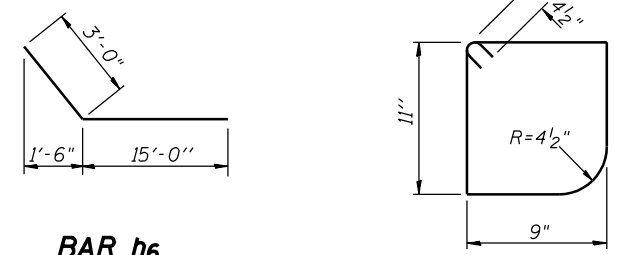
All construction joints shall be bonded.

*Bars shall be ordered full length & cut to fit skew. Balance of bar to be used in opposite end of culvert.



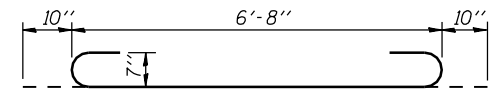
BAR d

BAR s

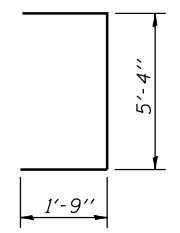


BAR h6

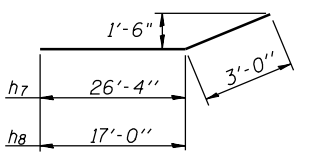
BAR s1



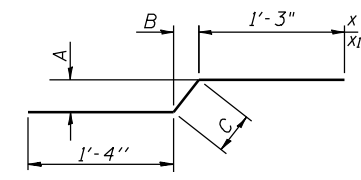
BAR a1



BAR v1

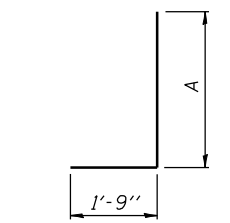


BARS h7 & h8



BAR x, x1 & x3

	x	x1	x3
A	9"	10"	10"
B	8"	7"	9"
C	1'-0"	1'-0 1/4"	1'-1 1/2"



BAR v2 THRU v4

	v2	v3	v4
A	4'-6"	3'-4"	2'-0"

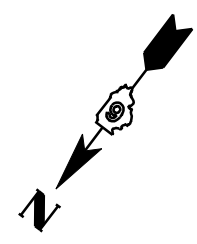


SECTION THRU HEADWALL

(Up Stream End Only)



BAR x2



ILLINOIS DEPARTMENT OF TRANSPORTATION

SHEET TITLE: **CULVERT DETAILS**

PROJECT: FAP ROUTE 604 (IL 159)

SEC. 14R: 115RS-2; 116RS-4; 101RS-2

MACOUPIN COUNTY

STATION 25+30

ENGINEER: **COOMBE-BLOXDORF P.C.**

Engineers / Land Surveyors
Springfield, Illinois
Design Firm License No. 184-002708

PROJECT NO. 03004-21

SCALE: AS SHOWN

DATE: TFG

DRAWN BY: MCB

CHECKED BY: MCB

DRAWING NO. 3

OF 4 SHTS