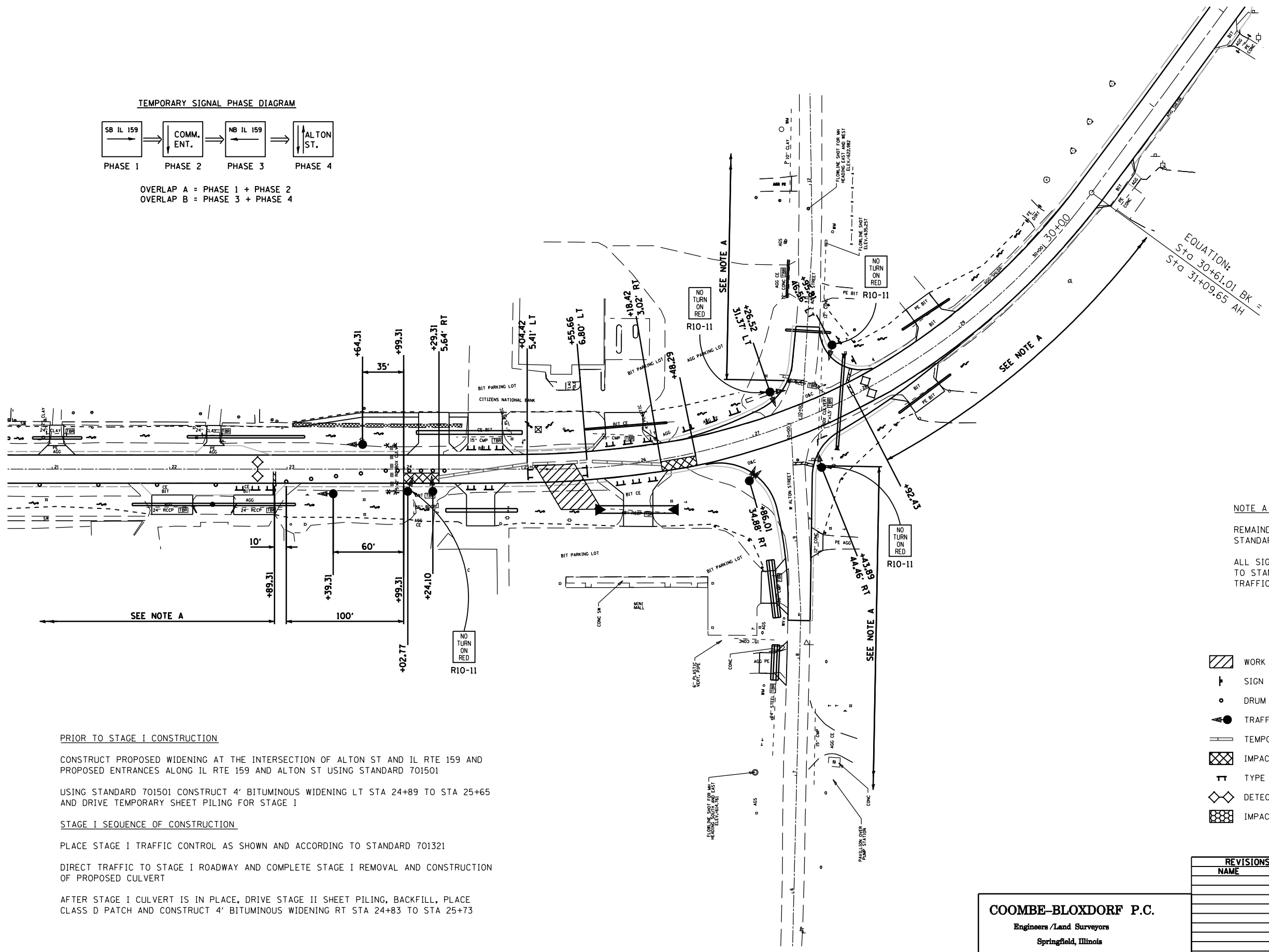
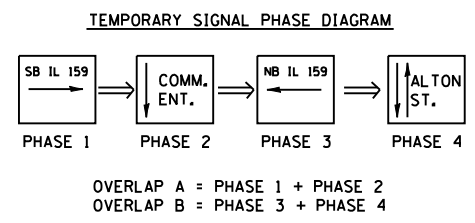


F.A.P. RTE.	SECTION	COUNTY	TOTAL SHEETS	SHEET NO.
*	**	MACOUPIN	231	114
STA.		TO STA.		
FED. ROAD DIST. NO.	ILLINOIS	FED. AID PROJECT		

* - FAP 325 & FAP 604
 ** - 14R, 115RS-2, 116RS-4, 101RS-2



NOTE A
 REMAINDER OF SIGNING ACCORDING TO STANDARD 701321 AND AS DIRECTED BY THE ENGINEER
 ALL SIGNING AND PAVEMENT MARKING SHOWN OR ACCORDING TO STANDARD 701321 IS INCLUDED IN THE COST OF TRAFFIC CONTROL AND PROTECTION STANDARD 701321 (SPECIAL)

LEGEND

- WORK AREA
- SIGN (SEE STD 701321)
- DRUM WITH STEADY BURNING LIGHT
- TRAFFIC SIGNAL
- TEMPORARY CONCRETE BARRIER
- IMPACT ATTENUATOR, TEMPORARY (NON-DIRECTIVE)
- TYPE III BARRICADE
- DETECTOR LOOPS
- IMPACT ATTENUATOR, TEMPORARY (FULLY REDIRECTIVE, NARROW)

PRIOR TO STAGE I CONSTRUCTION
 CONSTRUCT PROPOSED WIDENING AT THE INTERSECTION OF ALTON ST AND IL RTE 159 AND PROPOSED ENTRANCES ALONG IL RTE 159 AND ALTON ST USING STANDARD 701501
 USING STANDARD 701501 CONSTRUCT 4' BITUMINOUS WIDENING LT STA 24+89 TO STA 25+65 AND DRIVE TEMPORARY SHEET PILING FOR STAGE I

STAGE I SEQUENCE OF CONSTRUCTION
 PLACE STAGE I TRAFFIC CONTROL AS SHOWN AND ACCORDING TO STANDARD 701321
 DIRECT TRAFFIC TO STAGE I ROADWAY AND COMPLETE STAGE I REMOVAL AND CONSTRUCTION OF PROPOSED CULVERT
 AFTER STAGE I CULVERT IS IN PLACE, DRIVE STAGE II SHEET PILING, BACKFILL, PLACE CLASS D PATCH AND CONSTRUCT 4' BITUMINOUS WIDENING RT STA 24+83 TO STA 25+73

PLOT DATE = \$DATES
 FILE NAME = \$FILEL\$
 PLOT SCALE = \$SCALE\$
 USER NAME = \$USER\$

COOMBE-BLOXDORF P.C.
 Engineers / Land Surveyors
 Springfield, Illinois
 Design Firm License No. 184-002708

REVISIONS	
NAME	DATE

ILLINOIS DEPARTMENT OF TRANSPORTATION
 TRAFFIC CONTROL AND PROTECTION 701321 (SPECIAL)
 STAGE I
 FAP ROUTE 604 (IL ROUTE 159)
 SECTION 14R; 115RS-2; 101RS-2
 MACOUPIN COUNTY
 SCALE: 1"=40'
 DATE _____ DRAWN BY CFC
 CHECKED BY MCB