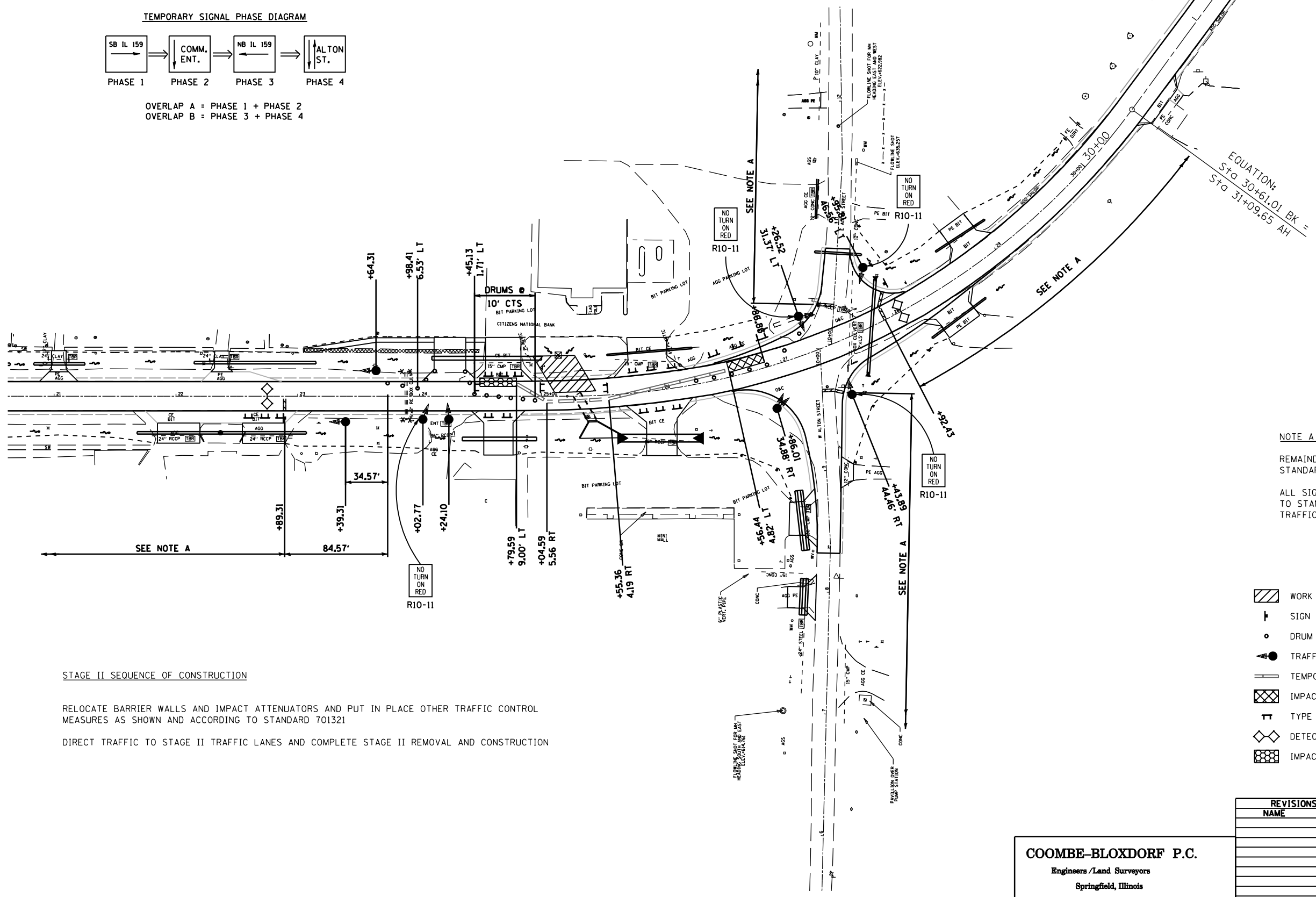
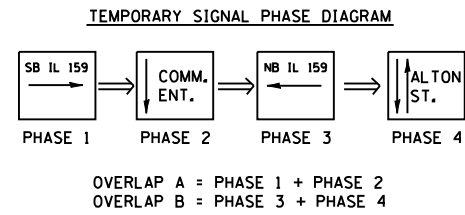


F.A.P. RTE.	SECTION	COUNTY	TOTAL SHEETS	SHEET NO.
*	**	MACOUPIN	231	115
STA.		TO STA.		
FED. ROAD DIST. NO.	ILLINOIS	FED. AID PROJECT		

FAP 325 & FAP 604
 ** 14R1 115RS-2; 116RS-4; 101RS-2



NOTE A

REMAINDER OF SIGNING ACCORDING TO STANDARD 701321 AND AS DIRECTED BY THE ENGINEER

ALL SIGNING AND PAVEMENT MARKING SHOWN OR ACCORDING TO STANDARD 701321 IS INCLUDED IN THE COST OF TRAFFIC CONTROL AND PROTECTION STANDARD 701321 (SPECIAL)

LEGEND

- WORK AREA
- SIGN (SEE STD 701321)
- DRUM WITH STEADY BURNING LIGHT
- TRAFFIC SIGNAL
- TEMPORARY CONCRETE BARRIER
- IMPACT ATTENUATOR, TEMPORARY (NON-DIRECTIVE)
- TYPE III BARRICADE
- DETECTOR LOOPS
- IMPACT ATTENUATOR, TEMPORARY (FULLY REDIRECTIVE, NARROW)

STAGE II SEQUENCE OF CONSTRUCTION

RELOCATE BARRIER WALLS AND IMPACT ATTENUATORS AND PUT IN PLACE OTHER TRAFFIC CONTROL MEASURES AS SHOWN AND ACCORDING TO STANDARD 701321

DIRECT TRAFFIC TO STAGE II TRAFFIC LANES AND COMPLETE STAGE II REMOVAL AND CONSTRUCTION

PLOT DATE = #DATES
 FILE NAME = #FILEL#
 PLOT SCALE = #SCALE#
 USER NAME = #USER#

COOMBE-BLOXDORF P.C.
 Engineers / Land Surveyors
 Springfield, Illinois
 Design Firm License No. 184-002708

REVISIONS	
NAME	DATE

ILLINOIS DEPARTMENT OF TRANSPORTATION

TRAFFIC CONTROL AND PROTECTION 701321 (SPECIAL)
 STAGE II
 FAP ROUTE 604 (IL ROUTE 159)
 SECTION 14R1 115RS-2; 101RS-2
 MACOUPIN COUNTY

SCALE: 1"=40'
 DATE

DRAWN BY CFC
 CHECKED BY MCB