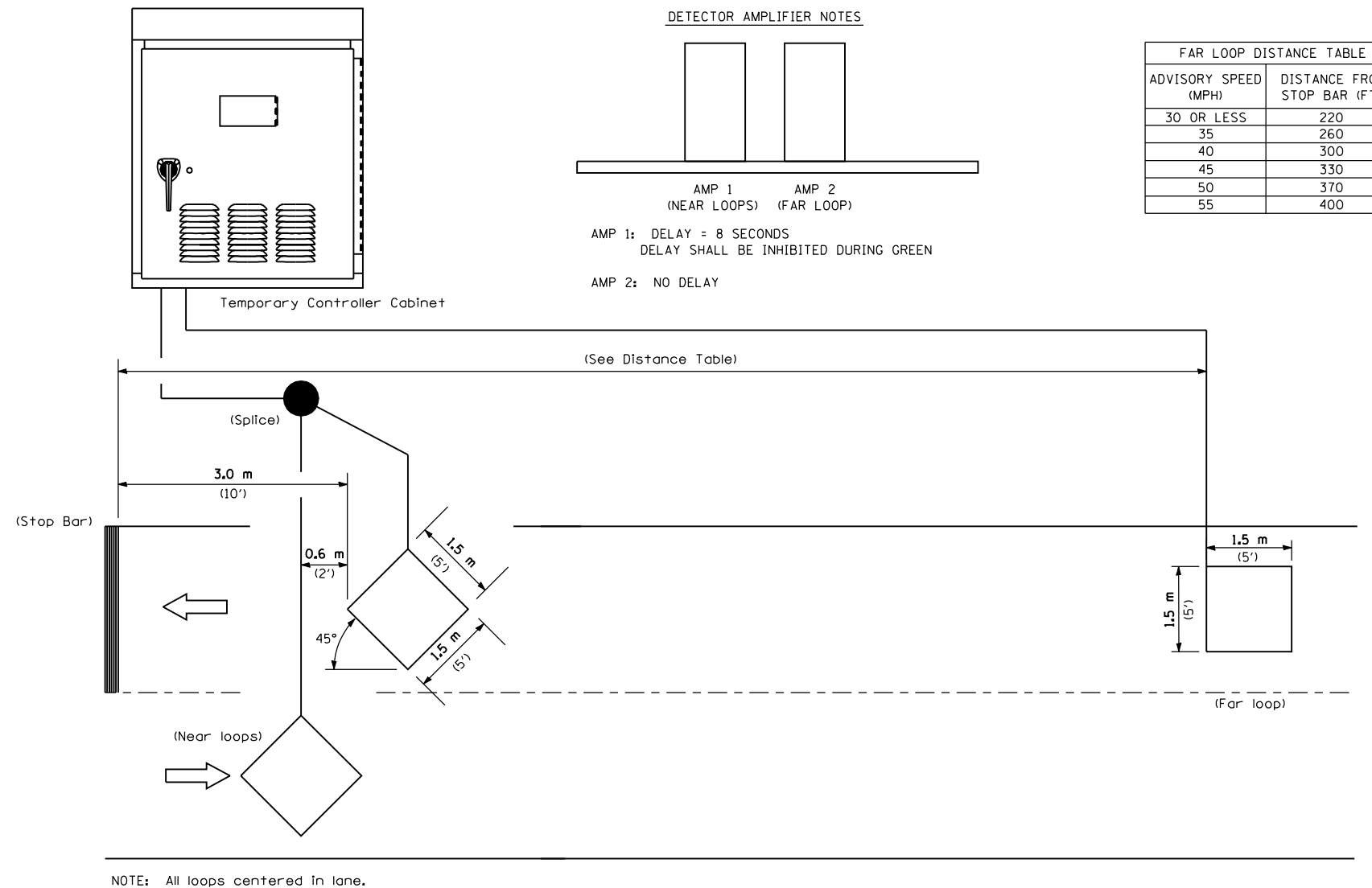


F.A.P. RTE.	SECTION	COUNTY	TOTAL SHEETS	SHEET NO.
*	**	MACOUPIN	231	116
STA.		TO STA.		
FED. ROAD DIST. NO.	ILLINOIS	FED. AID PROJECT		

* FAP 325 & FAP 604
 ** 14R; 115RS-2; 116RS-4; 101RS-2



INDUCTION LOOP DETECTOR

REVISIONS	
NAME	DATE

ILLINOIS DEPARTMENT OF TRANSPORTATION
**TEMPORARY BRIDGE TRAFFIC SIGNAL
 LOOP PLACEMENT DETAIL SHEET**
 FAP 325 (IL 16) & FAP 604 (IL 159)
 SECTION 14R; 115RS-2; 116RS-4; 101RS-2
 MACOUPIN COUNTY

SCALE: VERT. DRAWN BY: KDA
 HORIZ. CHECKED BY:
 DATE: JUNE 16, 2004

PLOT DATE : #DATES
 FILE NAME : #FILEL#
 PLOT SCALE : #SCALE#
 USER NAME : #USER#