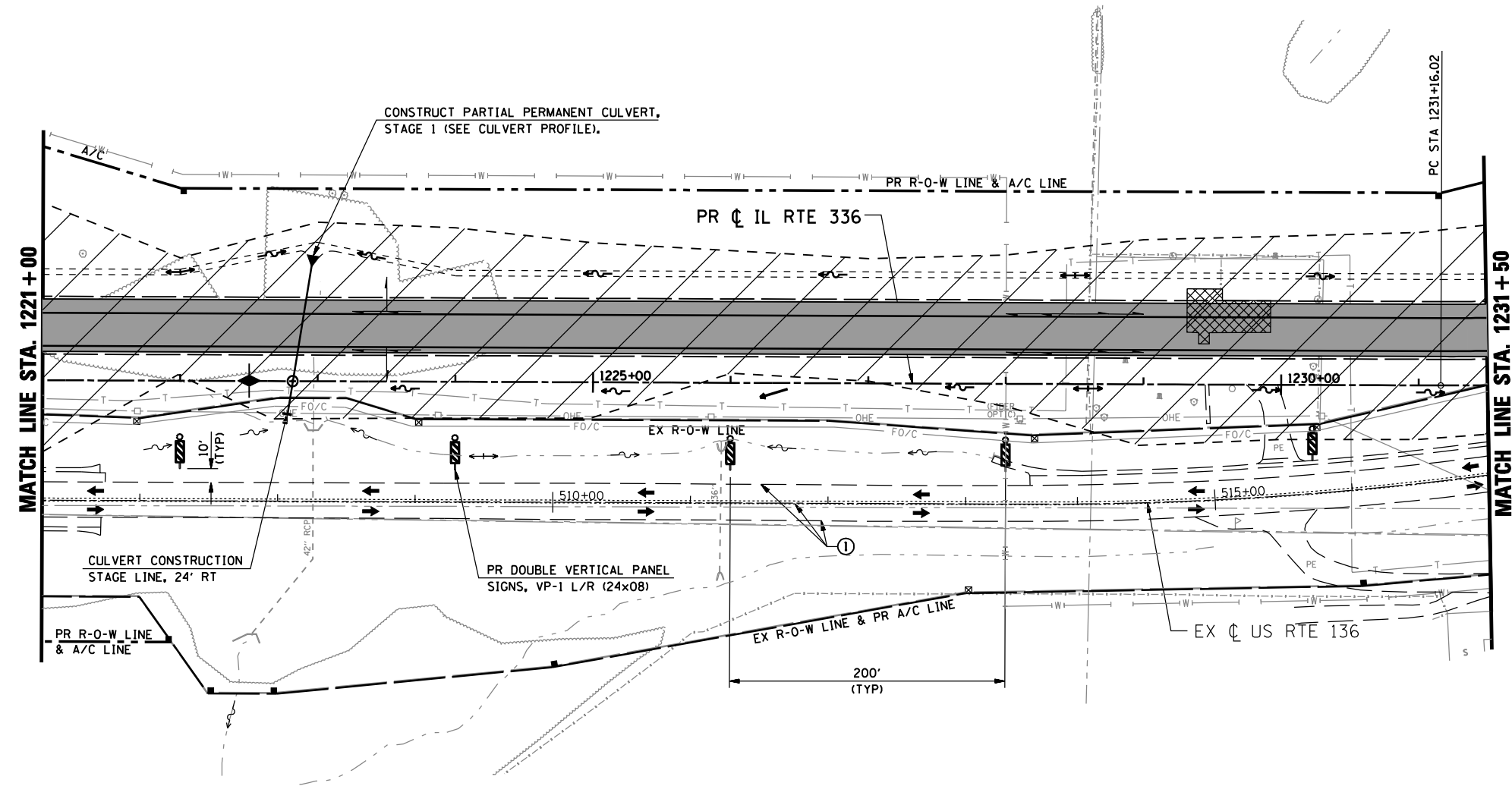
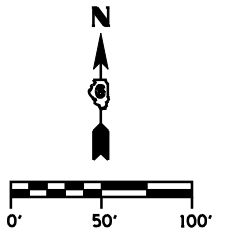


F.A.P. RTE.	SECTION	COUNTY	TOTAL SHEETS	SHEET No.
315	34-5	HANCOCK	612	82
STA. 1221+00		TO STA. 1231+50		
FED. ROAD DIST. No.		ILLINOIS	FED. AID PROJECT	



LEGEND

- DIRECTION OF TRAFFIC
- TT TYPE III BARRICADE W/ PROPER ROAD CLOSURE SIGNS
- ~ PERMANENT ROADWAY DITCH FLOW
- TEMPORARY STAGE DITCH FLOW
- ~ EXISTING ROADWAY DITCH FLOW
- || Z || STAGE CONSTRUCTION LIMITS
- █ STAGE CONSTRUCTION
- ▨ REMOVAL
- ① EXISTING PAVEMENT MARKING
- ② TEMP PAINT PAVEMENT MARKING - LINE 5"
- ③ TEMP PAINT PAVEMENT MARKING - LINE 6"
- ④ TEMP PAINT PAVEMENT MARKING - LINE 12"
- ⑤ TEMP PAINT PAVEMENT MARKING - LINE 24"
- ⑥ TEMP PAINT PAVEMENT MARKING - LETTERS & SYMBOLS

REVISIONS	
NAME	DATE

ILLINOIS DEPARTMENT OF TRANSPORTATION
MAINTENANCE OF TRAFFIC
IL RTE 336 (STAGE 1)
STA. 1221+00 TO STA. 1231+50
 SCALE: DRAWN BY: RG
 DATE: MARCH 10, 2006 CHECKED BY: JAC

DGN-SPEC
 DATE-TIME
 *REF01