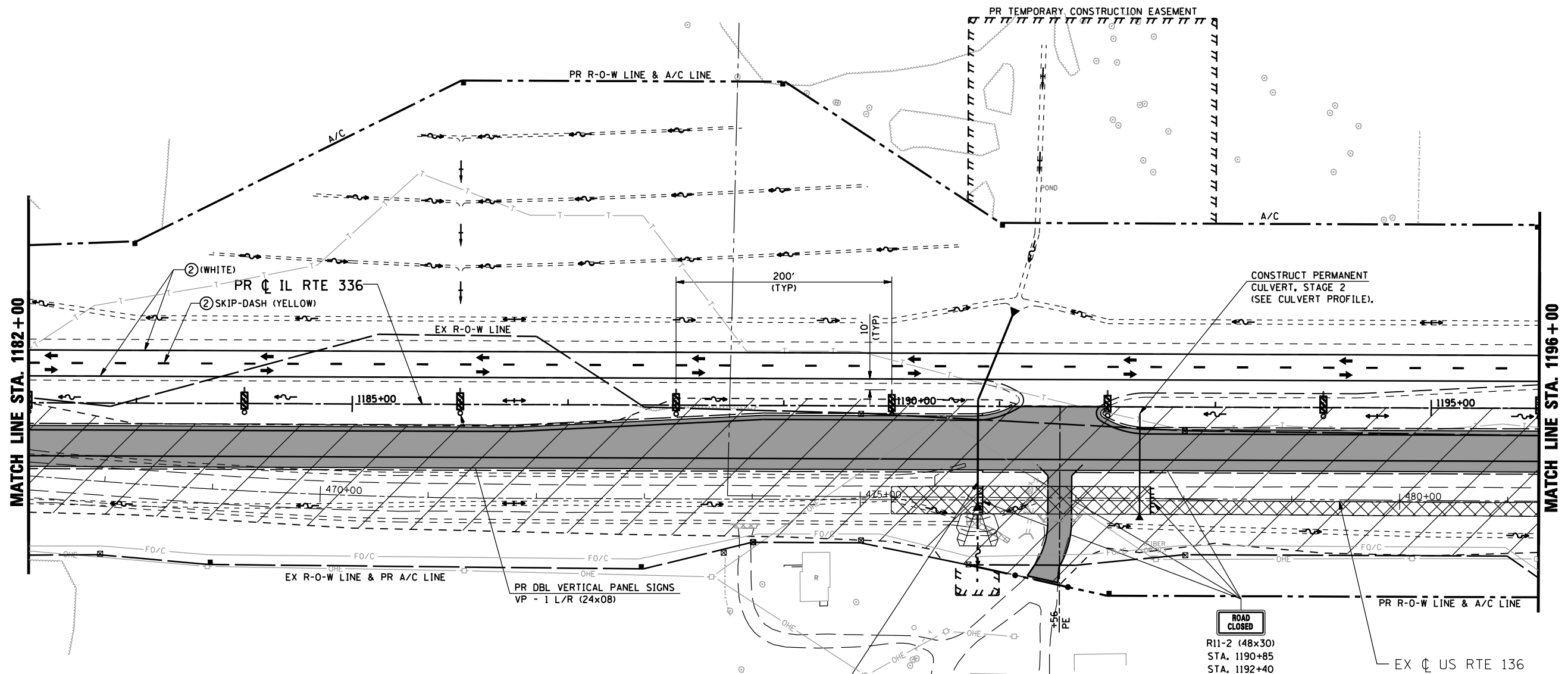
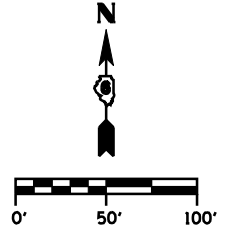


F.A.P. RTE.	SECTION	COUNTY	TOTAL SHEETS	SHEET No.
315	34-5	HANCOCK	612	101
STA. 1182+00 TO STA. 1196+00		FED. ROAD DIST. No. ILLINOIS FED. AID PROJECT		



**LEGEND**

- ➔ DIRECTION OF TRAFFIC
- TT TYPE III BARRICADE W/ PROPER ROAD CLOSURE SIGNS
- ~ PERMANENT ROADWAY DITCH FLOW
- ➔ TEMPORARY STAGE DITCH FLOW
- ~ EXISTING ROADWAY DITCH FLOW
- ||| STAGE CONSTRUCTION LIMITS
- █ STAGE CONSTRUCTION
- ▨ REMOVAL
- ① EXISTING PAVEMENT MARKING
- ② TEMP PAINT PAVEMENT MARKING - LINE 5"
- ③ TEMP PAINT PAVEMENT MARKING - LINE 6"
- ④ TEMP PAINT PAVEMENT MARKING - LINE 12"
- ⑤ TEMP PAINT PAVEMENT MARKING - LINE 24"
- ⑥ TEMP PAINT PAVEMENT MARKING - LETTERS & SYMBOLS

CONSTRUCT REMAINDER OF PERMANENT CULVERT, STAGE 2 (SEE CULVERT PROFILE).

REVISIONS	
NAME	DATE

ILLINOIS DEPARTMENT OF TRANSPORTATION  
**MAINTENANCE OF TRAFFIC**  
**IL RTE 336 (STAGE 2)**  
**STA. 1182+00 TO STA. 1196+00**  
 SCALE: DATE: MARCH 10, 2006  
 DRAWN BY: RG  
 CHECKED BY: JAC

•DGN-SPEC•  
 •DATE-TIME•  
 •REF01